

# GSM/GPRS Module

## MG2608



LCC Form Factor



GSM/GPRS



HTTP/FTP



Enhanced AT Commands



UART



GPRS: DL 85.6 Kbps / UL 85.6Kbps



-40°C ~ 85 °C



Audio



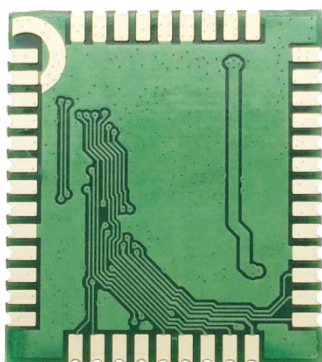
Embedded TCP/UDP

## M2M Application

**MG2608** is a GSM/GPRS module with LCC interface, and support GSM850/900/1800/1900MHz .It delivers 85.6 Kbps upload and 85.6 Kbps download data rates on GPRS networks . The module is very small, the dimension is 15.8\*17.7 mm.

A rich set of internet protocols (HTTP, PPP, FTP, TCP/IP) ,low power consumption characters, super performance and compact design extend the applicability of the module to a wide range of M2M applications, such as POS machine, asset tracking, remote monitoring and control, industrial wireless control, wearable devices and other mobile platforms.





## General Features

- ❑ LCC Form Factor
- ❑ Dimensions: 15.8mm × 17.7mm × 2.3mm
- ❑ Band support: GSM850/900/1800/1900

## Electrical & Sensitivity

- ❑ Transmit Power:
  - GSM850/900: 33dBm (Power Class 4)
  - GSM1800/1900: 30dBm(Power Class 1)
- ❑ Power Supply :
  - 3.4V~4.2V (3.8V is recommended)

## Data Features

- ❑ GPRS
  - Max Uplink 85.6Kbps / Downlink 85.6 Kbps

## Interfaces

- ❑ UART
- ❑ SIM interface (1.8/3.0V)
- ❑ GPIO
- ❑ ADC
- ❑ RF PAD for Primary Antenna
- ❑ Reset & Power-on
- ❑ PCM
- ❑ LED

## Applications

- ❑ Embedded TCP /IP
- ❑ FTP
- ❑ SMS
- ❑ OpenLink
- ❑ TTS/Record
- ❑ Call
- ❑ HTTP connection
- ❑ AT Commands according to 3GPP GSM07.05, GSM07.07 and GOSUNCN extended AT commands

## Environmental

- ❑ Operation temperature: -30° C to +75° C
  - Extreme Operating temperature: -40° C to +85° C
- ❑ Storage temperature: -40° C to +85° C
- ❑ Humidity: 5%~95%

Notes: The pictures are just for reference, please in kind prevail.

单击下面可查看定价，库存，交付和生命周期等信息

[>>GOSUNCN\(高新兴\)](#)