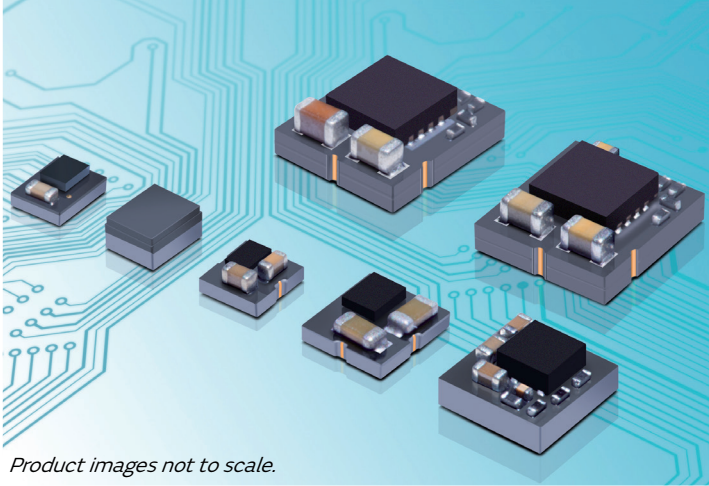


Product Brief

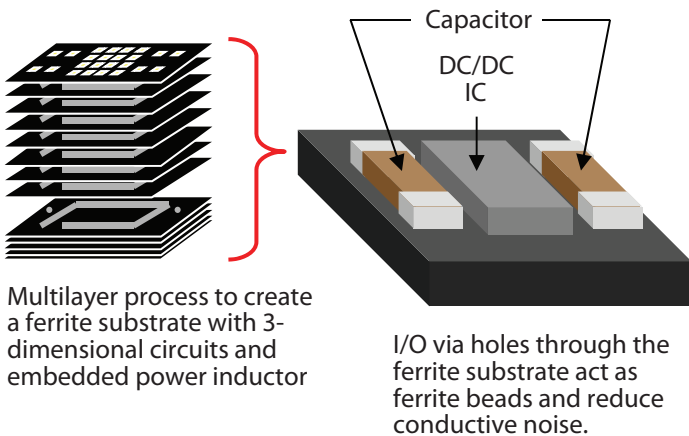
LXDC Series

μ DCDC Converters



Product images not to scale.

Structure



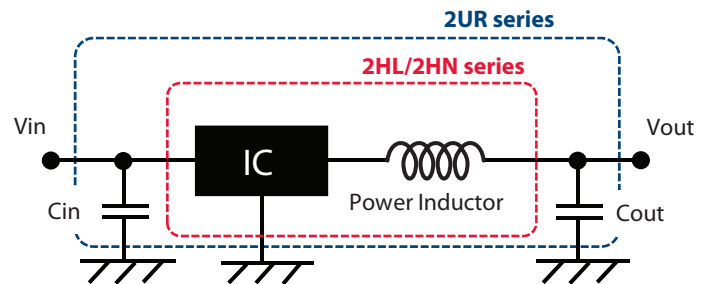
Features

- Low EMI noise and small footprint due to **inductor-embedded ferrite substrate**
- High efficiency using synchronous rectifier technology and PFM/PWM auto-select function (forced mode available on some models)
- Input voltage range: 2.3–5.5V & 4–14V (55F series)
- Load currents available are 600mA, 1A, 1.5A and 3A
- Fixed output voltage & adjustable voltage type (see product line-up table on page two)
- Switching frequency: 3MHz to 6MHz
- Operating temperature range: -40 to +85°C (105°C for 2XQ)

Applications

- Any device currently using discrete DC/DC circuits where downsizing and space savings are required
- Cellular phones, PDAs, mobile internet devices
- Digital cameras, ebooks, tablets, W-LAN, BT
- Portable game consoles, music players, etc.
- Base station, 12V AC/DC adaptor input devices

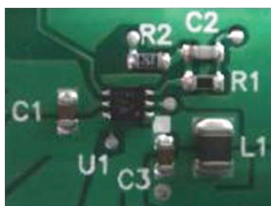
Application Circuit



Note: See page two for circuits specific to each series.

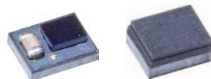
Downsizing Advantage

Discrete Solution



Footprint
35–60mm²

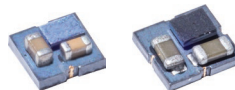
2HL or 2HN
Series (0.6A)



2HL 2HN

10mm²
(including two
external capacitors)

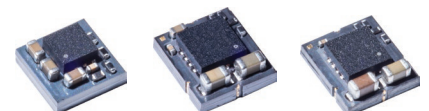
2UR Series (0.6A)
2XQ Series (1.5A)



2UR 2XQ

6–10mm²

44A Series (0.7A) -Boost
55K Series (3A)
55F Series (14V input, 1.5A)



44A 55K 55F

16–28mm²

muRata

INNOVATOR IN ELECTRONICS



LXDC Series

μDCDC Converters

Product Line-Up

Type	Load Current	Series	W x L x T (mm)	Application Circuit	Part Number	Input Voltage (V)	Output Voltage (V)	Max. Iout (mA)	Switch. Freq.	Pkg. (pcs/reel)	
Buck	≤0.6A	2HL	2.5×2.0×1.1		LXDC2HL10A-080	2.3-5.5	1.0	600	3MHz	3000	
					LXDC2HL12A-050		1.2				
					LXDC2HL13A-082		1.3				
					LXDC2HL1DA-087		2.35-5.5				1.35
					LXDC2HL15A-051		2.5-5.5				1.5
					LXDC2HL18A-052		2.8-5.5				1.8
		2HN	2.5×2.0×1.2		LXDC2HL25A-053	3.5-5.5	2.5	500			
					LXDC2HL28A-243		2.8	450			
					LXDC2HL30A-054		3.0	400			
					LXDC2HL33A-055		3.3	300			
					LXDC2HN10A-132		2.3-5.5	1.0	600	3MHz	3000
					LXDC2HN12A-099			1.2			
		LXDC2HN13A-236	1.3								
		LXDC2HN1DA-133	2.35-5.5	1.35							
		LXDC2HN15A-126	2.5-5.5	1.5							
		LXDC2HN18A-097	2.8-5.5	1.8							
		2UR	2.5×2.3×1.2		LXDC2HN25A-134	3.5-5.5	2.5	500			
					LXDC2HN28A-235		2.8	450			
LXDC2HN30A-135	3.0				400						
LXDC2HN33A-136	3.3				300						
LXDC2UR12A-118	2.3-5.5				1.2		600	6MHz	3000		
LXDC2UR15A-119					1.5						
LXDC2UR18A-120		1.8									
LXDC2UR30A-143		3.0									
LXDC2UR33A-122		3.3									
2XQ		≤1.5A	2.6×2.8×1.14		LXDC2UR12A-118	2.7-5.5				1.0	1.5A
	LXDC2XQ11A-298				1.2						
	LXDC2XQ12A-252				1.35						
	LXDC2XQ1DA-299				1.5						
	LXDC2XQ18A-253				1.8						
	LXDC2XQ25A-300				2.5						
	LXDC2XQ33A-254				3.0						
	55K				≤3A		5.7×5.0×2.1		LXDC2XQ10A-251	2.7-5.5	
LXDC55KAAA-205		Set by trim resistor									
55F	≤1.5A	5.7×5.0×2.1		LXDC2XQ11A-298	4.0-14.0	0.8-5.3	1500	2.5MHz	1000		
				LXDC55FAAA-203		Set by trim resistor					
Buck/Boost	≤1A Buck Mode/ ≤800mA Boost Mode	3EC	3.5×3.2×1.3		LXDC3ECAAD-202	2.5-5.5	3.2-3.4V Set at factory	≤1A Buck Mode/ ≤800mA Boost Mode	6MHz	1000	
Boost	≤0.7A	44A	4.0×4.0×2.0		LXDC44AAAC-169	2.7-5.5	5.0	700	3.3MHz	1000	

Contents subject to change without notice. Product images not to scale.



单击下面可查看定价，库存，交付和生命周期等信息

[>>Murata\(村田\)](#)

[>>点击查看相关商品](#)