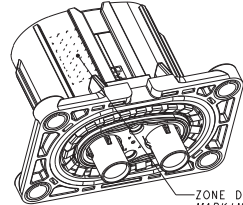
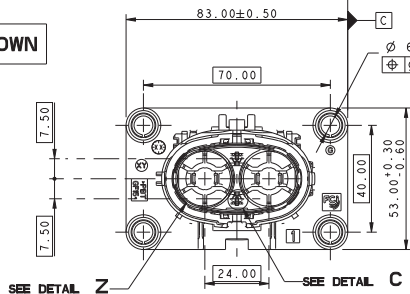


SCALE 1:1



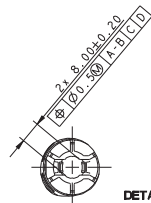
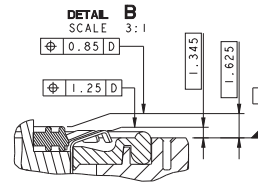
ZONE DE MARQUAGE
MARKING AREA

CODING 1 SHOWN

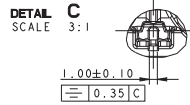


REPÈRES ALVEOLE :
- VOIES 1 ET 2 : LIGNE PUISSANCE
- VOIES 3 ET 4 : LIGNE INTERLOCK

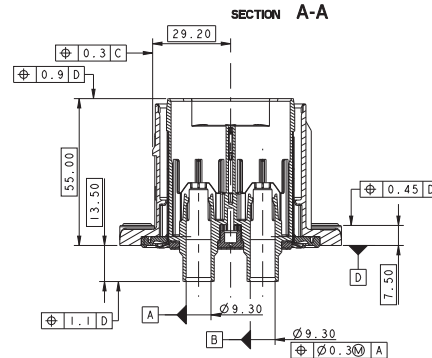
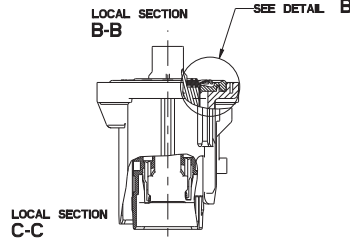
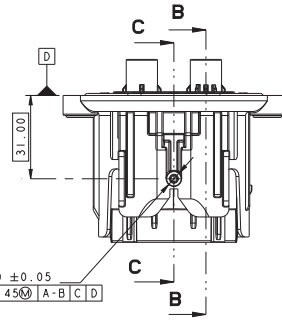
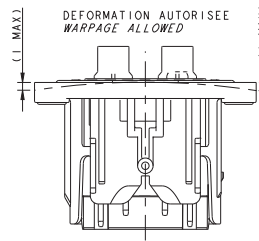
CAVITY POSITIONING:
- WAY 1 & 2 : POWER LINE
- WAY 3 & 4 : INTERLOCK LINE



DETAIL ALVEOLE 8mm
8mm DETAIL CAVITY

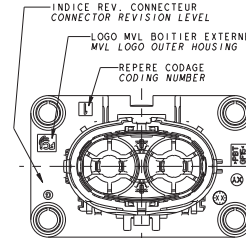


DETAIL ALVEOLE DCS 1.5
DCS 1.5 DETAIL CAVITY



- NOTES :
- CADRE DES CHARGES MVL : FE PS 10 008
 - CLASSE DE TEMPERATURE DU CONNECTEUR : CLASS 3 (-40°C ; +125°C)
 - CLASSE DE VIBRATION :
 - PRECONDITIONNEMENT
 - 3x 16h (COMBINE AVEC TEMPERATURE -40°C/+125°C) ; 3.9g
 - CLASSE D'ETANCHEITE :
 - 1000mb INITIAL
 - 500mb APRES LES TESTS D'ENVIRONNEMENT
 - EFFORT D'ACCROULEMENT : F=80N
 - CONDITIONNEMENT : FE PA 10 003
 - DOSSIER DE MISE EN ŒUVRE : PU138
 - MASSSE DU PRODUIT : 0.09 kg ±10%
 - CE PLAN EST UN EXTRAIT DES PLANS DE DEFINITIONS.
ON FERA REFERENCE POUR TOUT LITIGE AUX PLANS DE DEFINITIONS.
 - PLAN DU PORTE-CLIPS : PCC0732943
 - LE COUPLE DE SERRAGE PRECONISE PARTICIPE A UNE FONCTION SECURITAIRE D'ETANCHEITE.

- NOTES :
- MVL PRODUCT SPECIFICATIONS: FE PS 10 008
 - TEMPERATURE CLASS OF THE CONNECTOR: CLASS 3 (-40°C ; +125°C)
 - VIBRATION CLASS:
 - PRECONDITIONING
 - 3x 16h (COMBINED WITH TEMPERATURE -40°C/+125°C) ; 3.9g
 - SEALING CLASS:
 - 1000mb INITIAL
 - 500mb AFTER TEST ENVIRONMENT.
 - MATING FORCE: F=80N
 - PACKAGING: FE PA 10 003
 - HANDLING MANUAL: PU138
 - MASS OF THE PRODUCT: 0.09 kg ±10%
 - THIS DRAWING IS AN EXTRACT OF THE DETAIL DRAWINGS.
IN CASE OF CONFLICT, REFER TO THEM.
 - DRAWING FEMALE CONNECTOR: PCC0732943
 - THE PRECONIZED SCREWING TORQUE PARTICIPATE TO A SECURITY SEALING FEATURE.



REFERENCE MVL / MVL PART-N°	F473110 REVISION G	F573110 REVISION G	A DEFINIR / TO BE DEFINED
REFERENCE DELPHI / DELPHI PART-N°	33511764 REVISION 01	33511762 REVISION 01	A DEFINIR / TO BE DEFINED
CODAGE MECANIQUE MECHANICAL KEY	CODAGE 1 KEY 1	CODAGE 2 KEY 2	CODAGE 3 KEY 3
IDENTIFIANT IMDS IMDS ID	212448595	212869634	A DEFINIR / TO BE DEFINED
CODAGE CONNECTEUR SUIVANT VUE DE FACE ECHELLE: 1:1 PLUG CODING FRONT VIEW SCALE: 1:1			
CODAGE EQUIPEMENT SUIVANT VUE ARRIERE ECHELLE: 1:1 DEVICE CODING REAR VIEW SCALE: 1:1			

ECO-NO.	POSITION	CHANNEL DESCRIPTION
1	1	DELPHI P/N ADDED
2	2	DELPHI P/N ADDED
3	3	DELPHI P/N ADDED
4	4	DELPHI P/N ADDED
5	5	DELPHI P/N ADDED
6	6	DELPHI P/N ADDED
7	7	DELPHI P/N ADDED
8	8	DELPHI P/N ADDED
9	9	DELPHI P/N ADDED
10	10	DELPHI P/N ADDED
11	11	DELPHI P/N ADDED
12	12	DELPHI P/N ADDED
13	13	DELPHI P/N ADDED
14	14	DELPHI P/N ADDED
15	15	DELPHI P/N ADDED
16	16	DELPHI P/N ADDED

单击下面可查看定价，库存，交付和生命周期等信息

[>>FCI / Amphenol ICC](#)