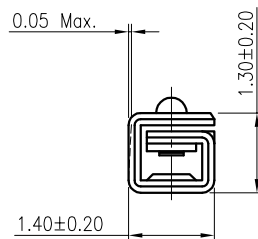
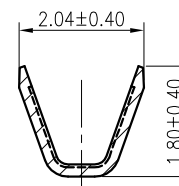


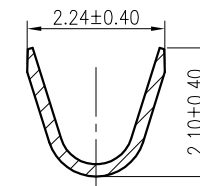
- NOTES:
1. MATERIAL: COPPER ALLOY, THICKNESS 0.2±0.01
 2. PLATING (PRE-TIN)
L: 50~100u" NICKEL UNDER PLATED.
100~150u" PURE TIN.
 3. COMPONENT LOAD PER REEL: 10K PCS.
 4. SPEC. PLS. REFER TO PS-92201-XXXX-XXX
 5. APPLICABLE WIRE: AWG#22-20 OD: 1.4~1.7mm
 6. PART NUMBER
92202-T 0 1 X
L: PLATING
L: PURE TIN (LEAD FREE)



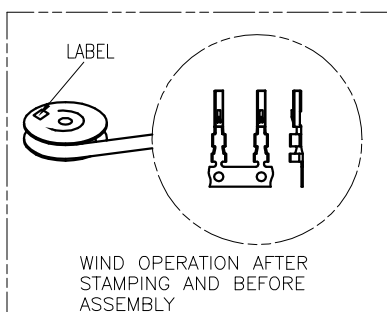
DETAIL A
SCALE 2:1



SECTION B-B
SCALE 2:1



SECTION C-C
SCALE 2:1



一般公差 TOLERANCES X ±0.50 .XX ±0.15 X ±0.25 .XXX ±0.10 ANGLES ±2°		宏致電子股份有限公司 Aces Electronics Co., Ltd.	
檢驗尺寸標示 SYMBOLS (M) (D) INDICATE CLASSIFICATION DIMENSION (M) MARK IS CRITICAL DIM. (D) MARK IS MAJOR DIM.	品名 (TITLE) REC CONTACT 圖號 (DWG. NO) 92202-T0XX	製圖 (DR) 14/01/14 Alex 審核 (CHKD) Simon 核准 (APPD) Sean	張數 (SHEET) 1 OF 2 尺寸 (SIZE) A4 版數 (REV) 0
表面處理 (FINISH)	比例 (SCALE) 4 : 1	單位 (UNITS) mm	

单击下面可查看定价，库存，交付和生命周期等信息

[>>ACES\(宏致\)](#)