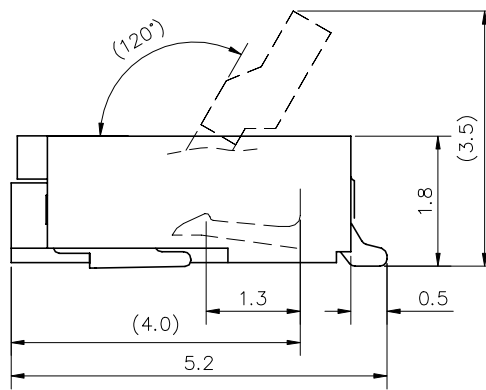
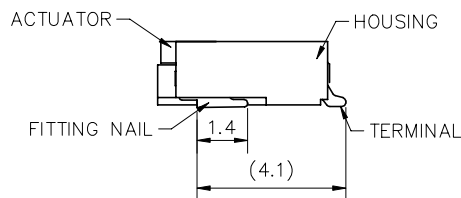
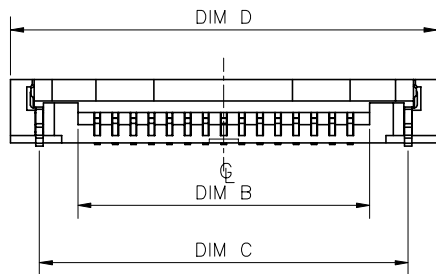


(含) 以下一個沉臺,
以上兩個沉臺



SCALE 6:1



NOTES:

1. MATERIAL:
 - 1.1 HOUSING: THERMOPLASTIC, HIGH TEMP.,UL94V-0.
 - 1.2 ACTUATOR: THERMOPLASTIC, HIGH TEMP.,UL94V-0.
 - 1.3 CONTACT: COPPER ALLOY
 - 1.4 FITTING NAIL: COPPER ALLOY
2. FINISH:
 - 2.1 CONTACT:
 - 50~100u" NICKEL UNDERPLATING OVERALL.
 - 1: GOLD FLASH ON CONTACT AREA
 - W: 1u" GOLD ON CONTACT AREA
 - M: 3u" GOLD ON CONTACT AREA
 - T: 10u" GOLD ON CONTACT AREA
 - C: 15u" GOLD ON CONTACT AREA
 - K: 30u" GOLD ON CONTACT AREA
 - 2.2 FITTING NAIL:
 - 100~200u" MATT TIN PLATING ON SOLDER TAILS(LEAD FREE).
 - 50~100u" NICKEL UNDERPLATING OVERALL.
3. REFLOW SOLDER CAPABLE TO 260°C PER ACES SPEC.
4. SPEC. PLS. REFER TO PS-51503-XXXXX
5. PACKAGE PLS. REFER TO 51540-XXXX-XX-TRP
6. PART NUMBER

51540-XXX X X-XXX

NO OF CKT

PACKING

PLATING

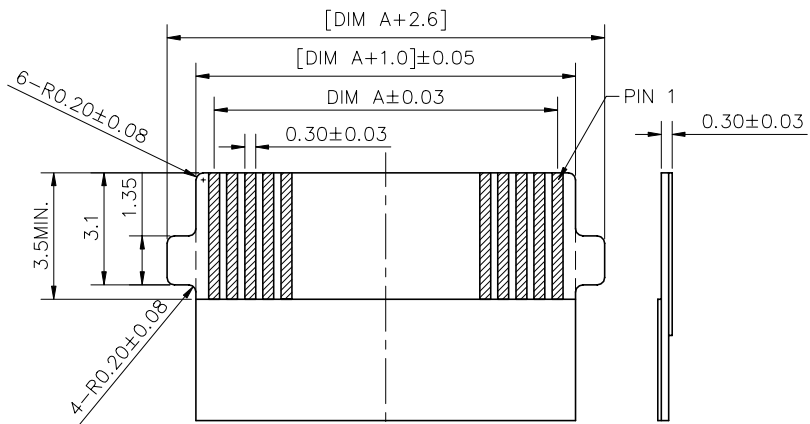
- 0: TAPE & REEL
- 4: TAPE & REEL WITH MYLAR
- A: TAPE & REEL (13" PLASTIC)
- B: TAPE & REEL WITH MYLAR (13" PLASTIC)

| XXX | HOUSING MATERIAL&COLOR | ACTUATOR MATERIAL&COLOR |
|-----|------------------------|-------------------------|
| 001 | HF & BLACK | HF & BLACK |
| 002 | HF & BLACK | HF & NATURAL |
| 003 | HF & NATURAL | HF & NATURAL |
| 005 | HF & NATURAL | HF & BLACK |

- 1: G/F ON CONTACT AREA
- W: 1u" GOLD ON CONTACT
- M: 3u" GOLD ON CONTACT
- T: 10u" GOLD ON CONTACT
- C: 15u" GOLD ON CONTACT
- K: 30u" GOLD ON CONTACT

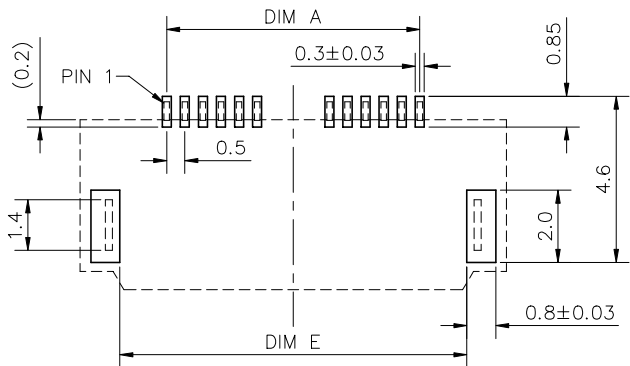
| | | | |
|---------------------------------------------------------------------------------------------------------------------------------------------------------------|-------------------------------------------|-------------------|-----------------------------------|
| QUALITY SYMBOLS MAJOR Ⓜ CRITICAL Ⓢ GENERAL TOLERANCES (UNLESS SPECIFIED) X ±0.5 XX ±0.25 XXX ±0.15 .XXX ±0.1 ANGLES ±2° | DRAWN BY Tsai, Wang Kun 23/08/31 | DATE 23/08/31 | |
| | CHECKED BY Wang, Kai Hung 23/08/31 | DATE 23/08/31 | |
| | APPROVED BY Huang, Kuo Hua 23/08/31 | DATE 23/08/31 | RFG NO. N/A |
| UNITS mm | | SIZE A4 | DWG NO. 51540-XXXXX-XXX |
| SCALE 3:1 | SHEET NO. 1 OF 2 | REV L | |

A B C D E F G H I J



RECOMMENDED FPC/FFC DIMENSIONS
GENERAL TOLERANCE ±0.1

| CKT | DIM A | DIM B | DIM C | DIM D | DIM E | M/SIZE | CKT | DIM A | DIM B | DIM C | DIM D | DIM E | M/SIZE |
|-----|-------|-------|-------|-------|-------|--------|-----|-------|-------|-------|-------|-------|--------|
| 4 | 1.5 | 2.57 | 4.7 | 6.3 | 4.1 | 6.0 | 33 | 16.0 | 17.07 | 19.2 | 20.8 | 18.6 | 10.0 |
| 5 | 2.0 | 3.07 | 5.2 | 6.8 | 4.6 | 6.0 | 34 | 16.5 | 17.57 | 19.7 | 21.3 | 19.1 | 10.0 |
| 6 | 2.5 | 3.57 | 5.7 | 7.3 | 5.1 | 6.0 | 35 | 17.0 | 18.07 | 20.2 | 21.8 | 19.6 | 10.0 |
| 7 | 3.0 | 4.07 | 6.2 | 7.8 | 5.6 | 6.0 | 36 | 17.5 | 18.57 | 20.7 | 22.3 | 20.1 | 10.0 |
| 8 | 3.5 | 4.57 | 6.7 | 8.3 | 6.1 | 6.0 | 37 | 18.0 | 19.07 | 21.2 | 22.8 | 20.6 | 10.0 |
| 9 | 4.0 | 5.07 | 7.2 | 8.8 | 6.6 | 6.0 | 38 | 18.5 | 19.57 | 21.7 | 23.3 | 21.1 | 10.0 |
| 10 | 4.5 | 5.57 | 7.7 | 9.3 | 7.1 | 6.0 | 39 | 19.0 | 20.07 | 22.2 | 23.8 | 21.6 | 10.0 |
| 11 | 5.0 | 6.07 | 8.2 | 9.8 | 7.6 | 6.0 | 40 | 19.5 | 20.57 | 22.7 | 24.3 | 22.1 | 10.0 |
| 12 | 5.5 | 6.57 | 8.7 | 10.3 | 8.1 | 6.0 | 41 | 20.0 | 21.07 | 23.2 | 24.8 | 22.6 | 10.0 |
| 13 | 6.0 | 7.07 | 9.2 | 10.8 | 8.6 | 6.0 | 42 | 20.5 | 21.57 | 23.7 | 25.3 | 23.1 | 10.0 |
| 14 | 6.5 | 7.57 | 9.7 | 11.3 | 9.1 | 6.0 | 43 | 21.0 | 22.07 | 24.2 | 25.8 | 23.6 | 10.0 |
| 15 | 7.0 | 8.07 | 10.2 | 11.8 | 9.6 | 6.0 | 44 | 21.5 | 22.57 | 24.7 | 26.3 | 24.1 | 10.0 |
| 16 | 7.5 | 8.57 | 10.7 | 12.3 | 10.1 | 6.0 | 45 | 22.0 | 23.07 | 25.2 | 26.8 | 24.6 | 10.0 |
| 17 | 8.0 | 9.07 | 11.2 | 12.8 | 10.6 | 6.0 | 46 | 22.5 | 23.57 | 25.7 | 27.3 | 25.1 | 10.0 |
| 18 | 8.5 | 9.57 | 11.7 | 13.3 | 11.1 | 6.0 | 47 | 23.0 | 24.07 | 26.2 | 27.8 | 25.6 | 10.0 |
| 19 | 9.0 | 10.07 | 12.2 | 13.8 | 11.6 | 6.0 | 48 | 23.5 | 24.57 | 26.7 | 28.3 | 26.1 | 10.0 |
| 20 | 9.5 | 10.57 | 12.7 | 14.3 | 12.1 | 6.0 | 49 | 24.0 | 25.07 | 27.2 | 28.8 | 26.6 | 10.0 |
| 21 | 10.0 | 11.07 | 13.2 | 14.8 | 12.6 | 6.0 | 50 | 24.5 | 25.57 | 27.7 | 29.3 | 27.1 | 10.0 |
| 22 | 10.5 | 11.57 | 13.7 | 15.3 | 13.1 | 6.0 | 51 | 25.0 | 26.07 | 28.2 | 29.8 | 27.6 | 10.0 |
| 23 | 11.0 | 12.07 | 14.2 | 15.8 | 13.6 | 6.0 | 52 | 25.5 | 26.57 | 28.7 | 30.3 | 28.1 | 10.0 |
| 24 | 11.5 | 12.57 | 14.7 | 16.3 | 14.1 | 6.0 | 53 | 26.0 | 27.07 | 29.2 | 30.8 | 28.6 | 10.0 |
| 25 | 12.0 | 13.07 | 15.2 | 16.8 | 14.6 | 6.0 | 54 | 26.5 | 27.57 | 29.7 | 31.3 | 29.1 | 10.0 |
| 26 | 12.5 | 13.57 | 15.7 | 17.3 | 15.1 | 6.0 | 55 | 27.0 | 28.07 | 30.2 | 31.8 | 29.6 | 10.0 |
| 27 | 13.0 | 14.07 | 16.2 | 17.8 | 15.6 | 6.0 | 56 | 27.5 | 28.57 | 30.7 | 32.3 | 30.1 | 10.0 |
| 28 | 13.5 | 14.57 | 16.7 | 18.3 | 16.1 | 6.0 | 57 | 28.0 | 29.07 | 31.2 | 32.8 | 30.6 | 10.0 |
| 29 | 14.0 | 15.07 | 17.2 | 18.8 | 16.6 | 6.0 | 58 | 28.5 | 29.57 | 31.7 | 33.3 | 31.1 | 10.0 |
| 30 | 14.5 | 15.57 | 17.7 | 19.3 | 17.1 | 6.0 | 59 | 29.0 | 30.07 | 32.2 | 33.8 | 31.6 | 10.0 |
| 31 | 15.0 | 16.07 | 18.2 | 19.8 | 17.6 | 10.0 | 60 | 29.5 | 30.57 | 32.7 | 34.3 | 32.1 | 10.0 |
| 32 | 15.5 | 16.57 | 18.7 | 20.3 | 18.1 | 10.0 | | | | | | | |



RECOMMENDED PCB LAYOUT
GENERAL TOLERANCE ±0.05

| | | | |
|-------------------------------------------------------------------------------------------------------------------------------------------------------------|-------------------------------|---------------------|----------------------------|
| QUALITY SYMBOLS MAJOR Ⓢ CRITICAL Ⓢ GENERAL TOLERANCES (UNLESS SPECIFIED) X. ±0.5 X ±0.25 .XX ±0.15 .XXX ±0.1 ANGLES ±2° | DRAWN BY Tsai, Wang Kun | DATE 23/08/31 | |
| | CHECKED BY Wang, Kai Hung | DATE 23/08/31 | |
| | APPROVED BY Huang, Kuo Hua | DATE 23/08/31 | RFG NO. N/A |
| | UNITS mm | | SIZE A4 |
| | SCALE 3 : 1 | SHEET NO. 2 OF 2 | DWG NO. 51540-XXXXX-XXX |

单击下面可查看定价，库存，交付和生命周期等信息

[>>ACES\(宏致\)](#)