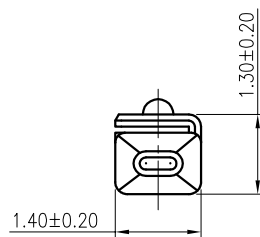
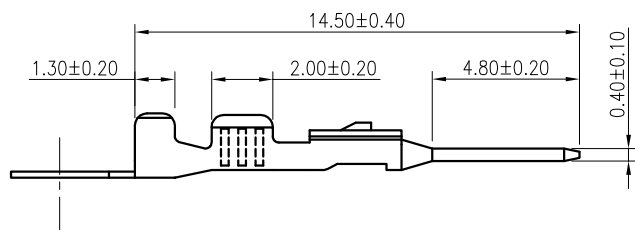
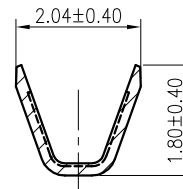


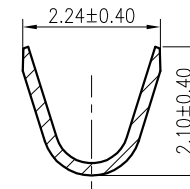
- NOTES:
1. MATERIAL: COPPER ALLOY, THICKNESS 0.2 ± 0.01
 2. PLATING (PRE-TIN)
L: $50 \sim 100 \mu$ NICKEL UNDER PLATED.
100 \sim 150 μ PURE TIN.
 3. COMPONENT LOAD PER REEL: 10K PCS.
 4. SPEC. PLS. REFER TO PS-92201-XXXXX-XXX
 5. APPLICABLE WIRE: AWG#22-20 OD: 1.4-1.7mm
 6. PART NUMBER
92201-T 0 0 X
└ PLATING
L: PURE TIN (LEAD FREE)



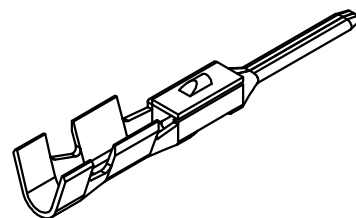
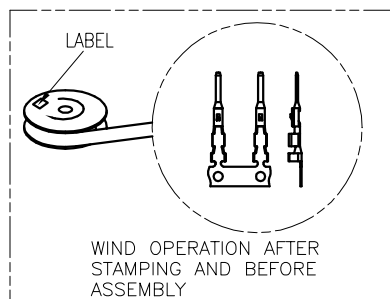
DETAIL A
SCALE 2:1



SECTION B-B
SCALE 2:1



SECTION C-C
SCALE 2:1



一般公差 TOLERANCES X ± 0.50 .XX ± 0.15 X ± 0.25 .XXX ± 0.10 ANGLES $\pm 2^\circ$		宏致電子股份有限公司 Aces Electronics Co.,Ltd.	
檢驗尺寸標示 SYMBOLS Ⓢ Ⓜ INDICATE CLASSIFICATION DIMENSION Ⓢ MARK IS CRITICAL DIM. Ⓜ MARK IS MAJOR DIM.	品名 (TITLE) TAB CONTACT 圖號 (DWG. NO.) 92201-T0XX	製圖 (DR) 14/01/14 Alex 審核 (CHKD) Simon 核准 (APPD) Sean	
表面處理 (FINISH)	比例 (SCALE) 4 : 1	單位 (UNITS) mm	張數 (SHEET) 1 OF 2 尺寸 (SIZE) A4 版數 (REV) 0

单击下面可查看定价，库存，交付和生命周期等信息

[>>ACES\(宏致\)](#)