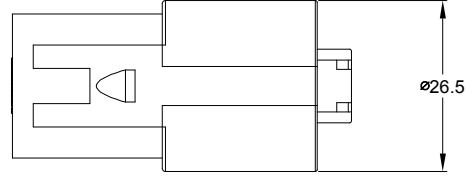
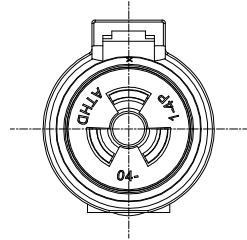
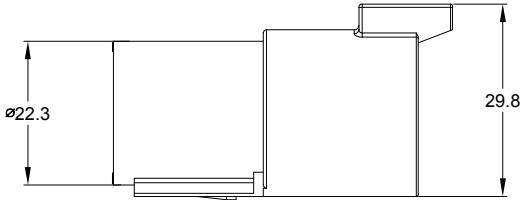
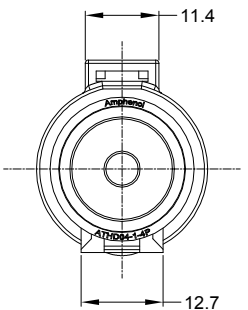
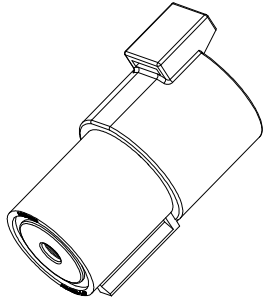
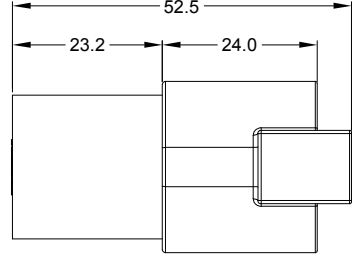


REVISIONS					
REV	ECO	DESCRIPTION	DATE	BY	APPR
A1	-	RELEASED DRAWING	Feb-14-19	White	Tommy



NOTES: UNLESS OTHERWISE SPECIFIED

- MATERIAL:
HOUSING: THERMOPLASTIC
SEAL: SILICONE RUBBER
- SPECIFICATIONS:
2.1 CURRENT RATING: 100 AMPS
2.2 VOLTAGE RATING: 1000 V AC/DC
2.3 OPERATING TEMPERATURE: -55°C TO +125°C
2.4 DIELECTRIC WITHSTANDING VOLTAGE: LESS THAN 2 MILLIAMPS CURRENT LEAKAGE @ 3000 VOLTS AC.
2.5 INSULATION RESISTANCE: 1000 MEGOHMS MIN @ 25°C.
2.6 MOISTURE RESISTANCE: IP67 AND IP69K IN THE MATED CONDITION.
2.7 MATING CYCLE DURABILITY: 100 CYCLES
2.8 RoHS COMPLIANT
- SUITABLE CONTACTS: 4# CONTACTS
- ALL DIMENSIONS ARE FOR REFERENCE USE ONLY.
- CONTACT SIZE AND REAR SEAL WIRE RANGE:

CONTACT SIZE	MIN. INSUL O.D.	MAX. INSUL O.D.	TYPICAL WIRE RANGE
4	7.1 mm	7.4 mm	6 AWG

SEE PART NUMBER CHART		DESCRIPTION		ITEM																																																		
PART NUMBER		DESCRIPTION		ITEM																																																		
<table border="1"> <thead> <tr> <th>QUANTITY</th> <th colspan="4">MATERIALS LIST</th> </tr> </thead> <tbody> <tr> <td colspan="5"> <small>UNLESS OTHERWISE SPECIFIED</small> 1) All dimensions are in metric (mm). 2) Tolerances are as follows: 1 PL DEC ±0.30 Fractions ±1/64 2 PL DEC ±0.15 3 PL DEC ±0.08 3) Note reference = </td> </tr> <tr> <td colspan="2">SIGNATURES</td> <td colspan="3">DATE</td> </tr> <tr> <td colspan="2">DRAWN: White</td> <td colspan="3">Feb-14-19</td> </tr> <tr> <td colspan="2">CHECKED: Tod</td> <td colspan="3">Feb-14-19</td> </tr> <tr> <td colspan="2">ENGINEER:</td> <td colspan="3"></td> </tr> <tr> <td colspan="2">APPROVAL: Tommy</td> <td colspan="3">Feb-14-19</td> </tr> <tr> <td colspan="2">MATERIAL SPECIFICATIONS:</td> <td colspan="3">CUSTOMER:</td> </tr> <tr> <td colspan="2">PROCESS SPECIFICATIONS:</td> <td colspan="3"> THIS DRAWING IS SUPPLIED FOR INFORMATION ONLY. DESIGN FEATURES, SPECIFICATIONS AND PERFORMANCE DATA SHOWN HEREON ARE THE PROPERTY OF THE AMPHENOL CORPORATION. NO RIGHTS OF REPRODUCTION ARE IMPLIED. ALL DIMENSIONS ARE SUBJECT TO NORMAL MANUFACTURING VARIATIONS. </td> </tr> <tr> <td colspan="2">NEXT ASSY:</td> <td colspan="3">SCALE: NONE</td> </tr> </tbody> </table>					QUANTITY	MATERIALS LIST				<small>UNLESS OTHERWISE SPECIFIED</small> 1) All dimensions are in metric (mm). 2) Tolerances are as follows: 1 PL DEC ±0.30 Fractions ±1/64 2 PL DEC ±0.15 3 PL DEC ±0.08 3) Note reference =					SIGNATURES		DATE			DRAWN: White		Feb-14-19			CHECKED: Tod		Feb-14-19			ENGINEER:					APPROVAL: Tommy		Feb-14-19			MATERIAL SPECIFICATIONS:		CUSTOMER:			PROCESS SPECIFICATIONS:		THIS DRAWING IS SUPPLIED FOR INFORMATION ONLY. DESIGN FEATURES, SPECIFICATIONS AND PERFORMANCE DATA SHOWN HEREON ARE THE PROPERTY OF THE AMPHENOL CORPORATION. NO RIGHTS OF REPRODUCTION ARE IMPLIED. ALL DIMENSIONS ARE SUBJECT TO NORMAL MANUFACTURING VARIATIONS.			NEXT ASSY:		SCALE: NONE		
QUANTITY	MATERIALS LIST																																																					
<small>UNLESS OTHERWISE SPECIFIED</small> 1) All dimensions are in metric (mm). 2) Tolerances are as follows: 1 PL DEC ±0.30 Fractions ±1/64 2 PL DEC ±0.15 3 PL DEC ±0.08 3) Note reference =																																																						
SIGNATURES		DATE																																																				
DRAWN: White		Feb-14-19																																																				
CHECKED: Tod		Feb-14-19																																																				
ENGINEER:																																																						
APPROVAL: Tommy		Feb-14-19																																																				
MATERIAL SPECIFICATIONS:		CUSTOMER:																																																				
PROCESS SPECIFICATIONS:		THIS DRAWING IS SUPPLIED FOR INFORMATION ONLY. DESIGN FEATURES, SPECIFICATIONS AND PERFORMANCE DATA SHOWN HEREON ARE THE PROPERTY OF THE AMPHENOL CORPORATION. NO RIGHTS OF REPRODUCTION ARE IMPLIED. ALL DIMENSIONS ARE SUBJECT TO NORMAL MANUFACTURING VARIATIONS.																																																				
NEXT ASSY:		SCALE: NONE																																																				
<h1>Amphenol</h1> <p>Sine Systems - www.amphenol-sine.com 44724 Morley Drive Clinton Township, MI 48036</p> <p>AT SERIES, RECEPTACLE, 1 POS, PIN.</p>																																																						
SIZE: B	TYPE: C-	DWG NO: ATHD04-14P	REVISION: A1																																																			
SHEET 1 OF 1																																																						

TITLE: AT SERIES RECEPTACLE, 1 POS, PIN DWG NO: ATHD04-14P REV: A1 SH: 1 OF: 1

单击下面可查看定价，库存，交付和生命周期等信息

[>>Amphenol\(安费诺\)](#)