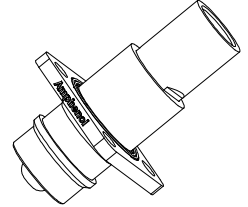
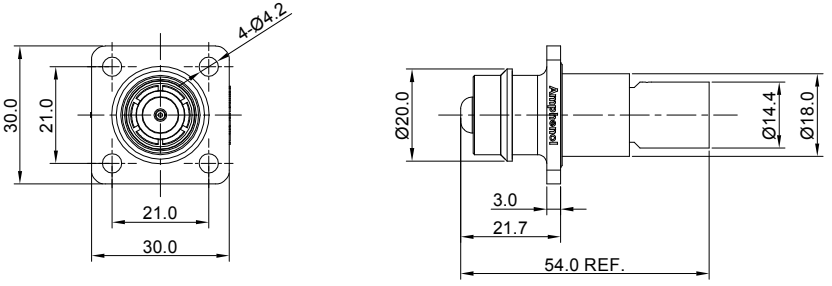


REVISIONS					
REV	ECO	DESCRIPTION	DATE	BY	APPR
A1	-	FIRST RELEASE	Jul.31,18	White	Tommy
A2	-	UPDATED DRAWING	Sep.27,18	White	Tommy
A3	-	UPDATED DRAWING	Dec.11,18	White	Tommy



NOTES: UNLESS OTHERWISE SPECIFIED

- MATERIAL:
  - HOUSING: THERMOPLASTIC UL94 V0
  - SEAL: SILICONE RUBBER
  - CONTACT: COPPER ALLOY,SILVER PLATED
- SPECIFICATIONS:
  - CURRENT RATING: 50 mm<sup>2</sup> @180 AMPS  
35 mm<sup>2</sup> @130 AMPS
  - OPERATING VOLTAGE: 1000V AC/DC
  - CONTACT RESISTANCE:0.3mΩ
  - OPERATING TEMPERATURE: -55°C TO +125°C
  - DEGREE OF PROTECTION: IP67 (MATED CONDITION)
  - MATING CYCLE DURABILITY: 50 CYCLES
  - RoHS COMPLIANT
- ALL DIMENSIONS ARE FOR REFERENCE USE ONLY.

ITEM	P/N	WIRE RANGE	NOTE
1	ATHP041P08NN-50	50 mm <sup>2</sup>	BLACK(SHELL)
2	ATHP041P08NN-35	35 mm <sup>2</sup>	BLACK(SHELL)
3	ATHP041P08NN-50-ORG	50 mm <sup>2</sup>	ORANGE(SHELL)
4	ATHP041P08NN-35-ORG	35 mm <sup>2</sup>	ORANGE(SHELL)

QUANTITY	PART NUMBER	DESCRIPTION	ITEM
<b>MATERIALS LIST</b>			
<b>UNLESS OTHERWISE SPECIFIED</b> 1) All dimensions are in metric(mm). 2) Tolerances are as follows: 1 PL DEC ±0.30 Fractions ±1/64 2 PL DEC ±0.15 3 PL DEC ±0.08 3) Note reference =		<b>SIGNATURES DATE</b> DRAWN: <u>White</u> <u>Dec.11,18</u> CHECKED: <u>Tod</u> <u>Dec.11,18</u> APPROVAL: <u>Tommy</u> <u>Dec.11,18</u>	
MATERIAL SPECIFICATIONS:  PROCESS SPECIFICATIONS:  NEXT ASSY:		 Sine Systems - www.amphenol-sine.com 44724 Morley Drive Clinton Township, MI 48036  ATHP,8MM, STRAIGHT RECEPTACLE  THIS DRAWING IS SUPPLIED FOR INFORMATION ONLY. DESIGN FEATURES, SPECIFICATIONS AND PERFORMANCE DATA SHOWN HEREON ARE THE PROPERTY OF THE AMPHENOL CORPORATION. NO RIGHTS OF REPRODUCTION ARE IMPLIED. ALL DIMENSIONS ARE SUBJECT TO NORMAL MANUFACTURING VARIATIONS.	
SIZE <b>B</b> TYPE <b>C-</b>		DWG NO: <b>ATHP041P08NN-xx-x</b> REVISION <b>A3</b>	
SCALE: NONE		SHEET 1 OF 1	

TITLE: ATHP 8MM STRAIGHT RECEPTACLE DWG NO.: ATHP041P08NN-xx-x REV: A3 SH: 1 OF: 1

单击下面可查看定价，库存，交付和生命周期等信息

[>>Amphenol\(安费诺\)](#)