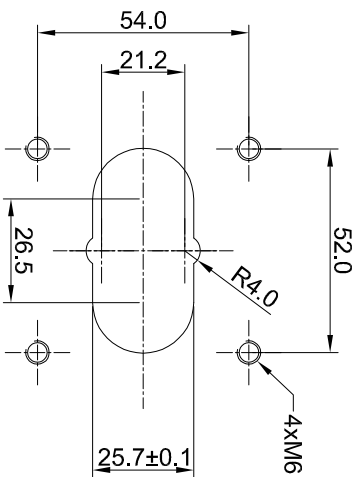
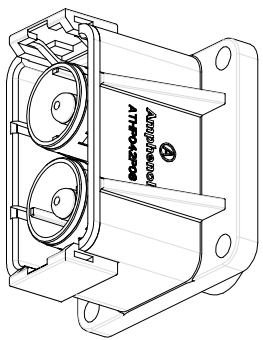
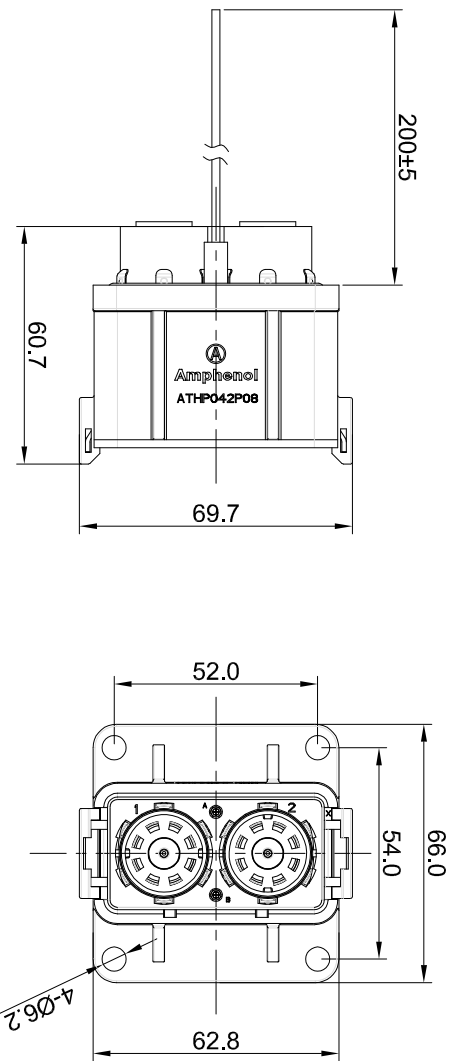


REVISIONS				
REV	ECO	DESCRIPTION	DATE	BY APPR
A1	-	RELEASE NEW DRAWING	Aug.31.2016	Tod Tommy
A2	-	UPDATE THE STRUCTURES	Oct.24.2016	Regan Tommy
A3	-	UPDATE DRAWING	Dec.15.2016	Regan Tommy



RECOMMEND PANEL CUT

NOTES: UNLESS OTHERWISE SPECIFIED

- MATERIAL:**
 - 1.1 HOUSING: THERMOPLASTIC UL 94V0
 - 1.2 SEAL: SILICONE RUBBER
 - 1.3 POWER CONTACT: COPPER ALLOY, SILVER PLATED
 - 1.4 SHIELDING: COPPER ALLOY, TIN PLATED
- SPECIFICATIONS:**
 - 2.1 CURRENT RATING: 50mm²@180 AMPS
 - 2.2 VOLTAGE RATING: 1000 V AC/DC
 - 2.3 OPERATING TEMPERATURE: -40°C TO +130°C
 - 2.4 DIELECTRIC WITHSTANDING VOLTAGE: LESS THAN 2 MILLIAMPS CURRENT LEAKAGE @ 3000 VOLTS AC.
 - 2.5 INSULATION RESISTANCE: 500 MEGOHMS MIN@25°C.
 - 2.6 DEGREE OF PROTECTION: IP67 (MATED CONDITION)
 - 2.7 MATING CYCLE DURABILITY: 100 CYCLES
 - 2.8 RoHS COMPLIANT
- SIGNAL CONTACT: RT SERIES 16# PIN CONTACT**
POWER CONTACT: SC000384-8
- ALL DIMENSIONS ARE FOR REFERENCE USE ONLY.**

Wiring Diagram



QUANTITY	PART NUMBER	DESCRIPTION	ITEM
MATERIALS LIST			
UNLESS OTHERWISE SPECIFIED			
1) All dimensions are in millimeters.			
2) Tolerances are as follows:			
3 PL DEC 2016	Regan	DATE	Dec 15 2016
3 PL DEC 2016	Regan	CHECKED:	
3 PL DEC 2016	Regan	ENGINEER:	
3) Note reference =			
MATERIAL SPECIFICATIONS:			
CUSTOMER:			
THIS DRAWING IS SUPPLIED FOR INFORMATION ONLY. DESIGN FEATURES, SPECIFICATIONS AND PERFORMANCE DATA ARE THE PROPERTY OF AMPHENOL CORPORATION. NO PARTS OR DIMENSIONS ARE SUBJECT TO TYPICAL MANUFACTURING VARIATIONS.			
PROCESS SPECIFICATIONS:		SCALE: NONE	
NEXT ASSTY:		SHEET 1 OF 1	
ATHP, RECEPTACLE 2 PIN, 8MM FLANG MOUNTING WITH EMC SHIELDING		REVISION	
Amphenol		A3	
Site Systems - www.amphenol-site.com			
44724 Moley Drive			
Clinton Township, MI 48036			

单击下面可查看定价，库存，交付和生命周期等信息

[>>Amphenol\(安费诺\)](#)