

AMPHENOL PART NUMBER CONFIGURATION

UX76 - A 20 - X 0 0 X T

SFP RECEPTACLE

UE76 = RoHS COMPLIANT

CONTACT PLATING

- 2 = PLATING OPTION 2 (SEE MATERIAL NOTES)
- 3 = PLATING OPTION 3 (SEE MATERIAL NOTES)
- 5 = PLATING OPTION 5 (SEE MATERIAL NOTES)
- 6 = PLATING OPTION 6 (SEE MATERIAL NOTES)

LUBRICANT OPTION ON MATING AREA

- 0 = NO
- 1 = YES



REVISIONS				
SYM	ZONE	ECN, ERN NO.	DATE	APPRD.
A		PROPOSAL	SEP.22.08	A.G
B		UPDATED	MAR.11.09	A.G
C		ADD GENERAL TOLERANCES	JAN.06.11	A.G

MATERIAL NOTES:

PLASTIC HOUSING:
HIGH TEMPERATURE LCP
FLAMMABILITY RATING UL94V-0.

CONTACTS:

- PHOSPHOR BRONZE
- PLATING OPTION 2:
30µ" [0.76 µm] MIN. GOLD ON MATING AREA AND 2 µ" (0.05 µm) GOLD FLASH PLATING ON TERMINATION OVER 50µ" [1.27 µm] MIN. NICKEL UNDER LAYER.
- PLATING OPTION 3:
30µ" [0.76 µm] MIN. GOLD ON MATING AREA AND 150-300 µ" (3.81-7.62 µm) MIN. LOW WHISKER MATTE TIN PLATING ON TERMINATION OVER 50µ" [1.27 µm] MIN. NICKEL UNDER LAYER.
- PLATING OPTION 5:
15µ" [0.38 µm] MIN. GOLD ON MATING AREA AND 2 µ" (0.05 µm) GOLD FLASH PLATING ON TERMINATION OVER 50µ" [1.27 µm] MIN. NICKEL UNDER LAYER.
- PLATING OPTION 6:
15µ" [0.38 µm] MIN. GOLD ON MATING AREA AND 150-300 µ" (3.81-7.62 µm) MIN. LOW WHISKER MATTE TIN PLATING ON TERMINATION OVER 50µ" [1.27 µm] MIN. NICKEL UNDER LAYER.
- LUBRICANT OPTION: LUBRICANT CAN BE ADDED ON THE CONTACTS MATING AREA (SEE P/N FOR THE OPTION)

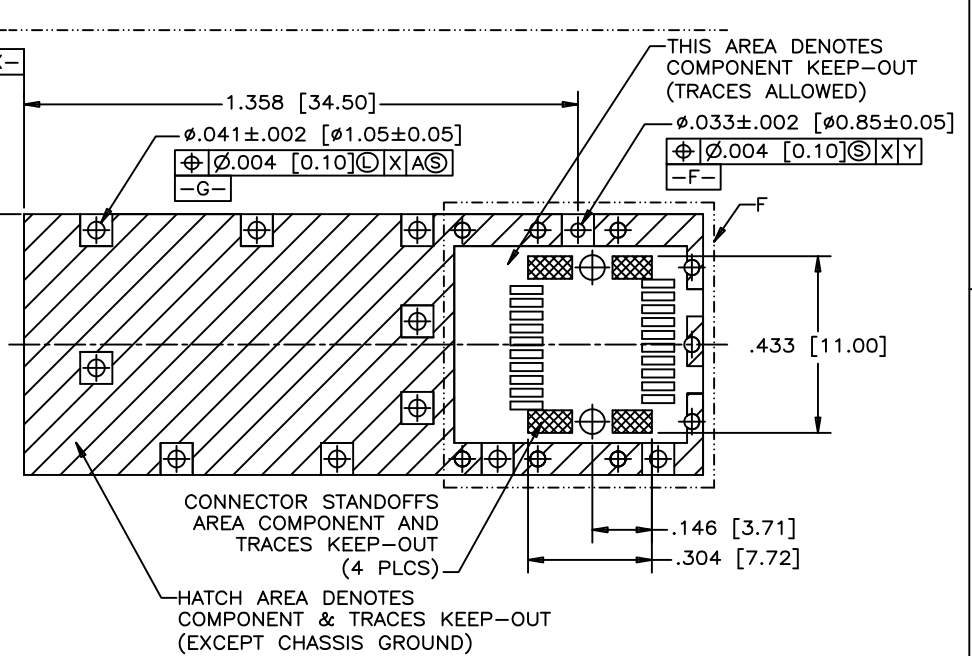
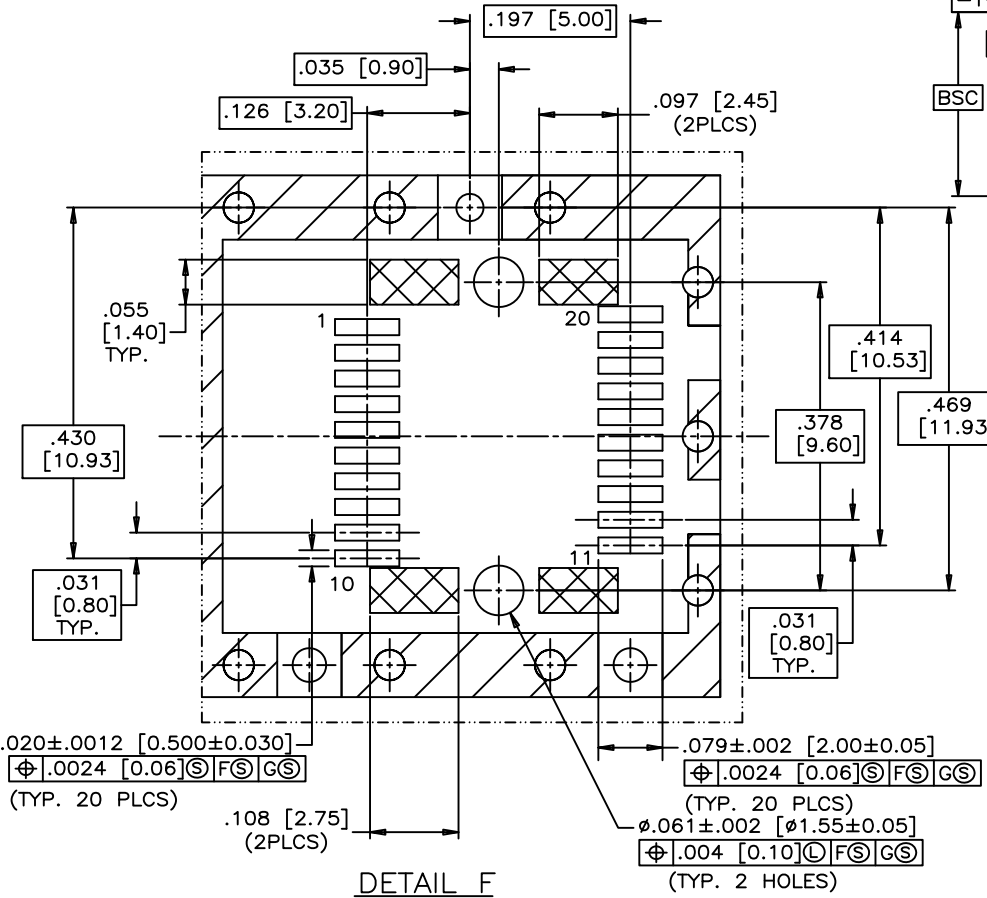
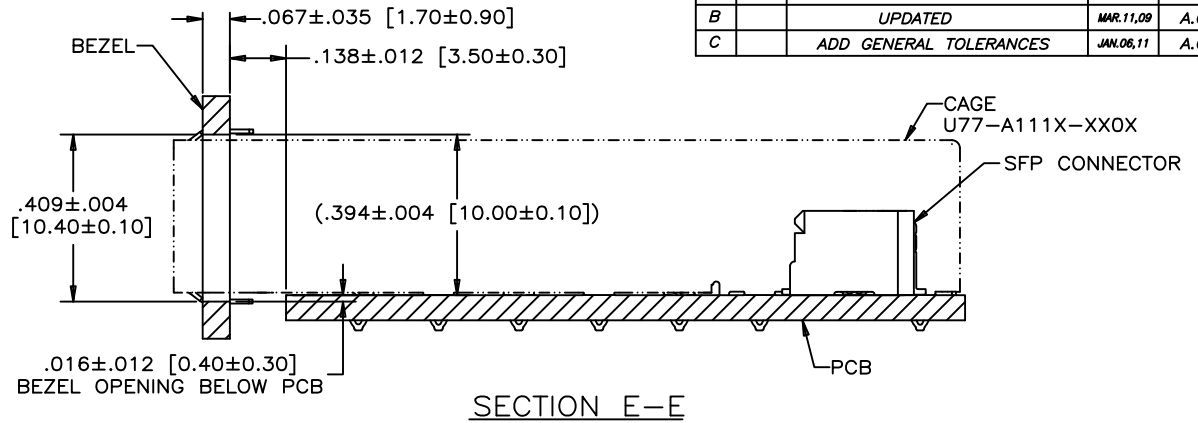
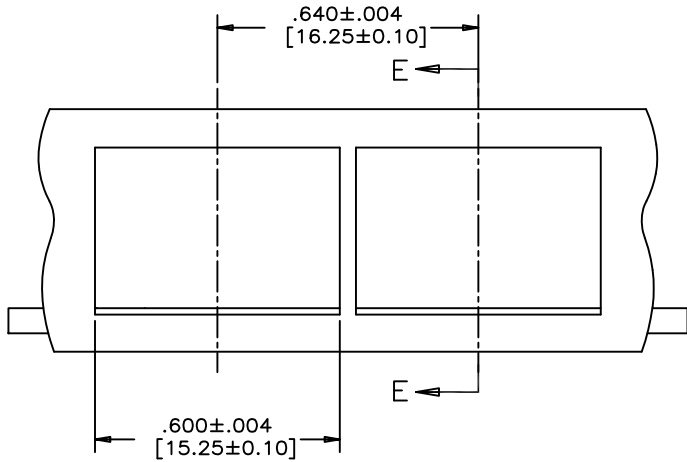
PACKAGING:
TAPE AND REEL.

TEMPERATURE RANGE:
-40°C TO +85°C

DRAWN <i>JaneZ</i> DATE SEP.22.08		Amphenol Canada Corp.	
DESIGNED			
CHECKED <i>J.SI</i> DATE SEP.22.08		TITLE SFP+ 20 POSITION HIGH SPEED CONNECTOR RECEPTACLE FIXED BOARD, RIGHT ANGLE SMT OPTIONAL PLATING AND LUBRICANT ON MATING	
I. E. APPRD.			
Q. A. APPRD.		DWG. DRAWING NO. P-UX76-A20-X00XX	
ENG. REL. NO. A.G SEP.22.08		REV. c	
REF.		SCALE 4/1 WT. ----- SURF. ----- SHEET 1 OF 3	
GENERAL TOLERANCES		DIMENSIONS ARE IN INCHES [mm]	
DECIMALS	X.XX±0.014 X.X±0.35	CODE ID. NO. 03554	
DECIMALS	X.XXX±0.010 X.XX±0.25		
ANGLES	X°±1°		
	X.X°±0.5°		

THIS DOCUMENT CONTAINS PROPRIETARY INFORMATION AND SUCH INFORMATION MAY NOT BE DISCLOSED TO OTHERS FOR ANY PURPOSE OR USED FOR MANUFACTURING PURPOSES WITHOUT WRITTEN PERMISSION FROM AMPHENOL CANADA CORP.

REVISIONS				
SYM	ZONE	ECN, ERN NO.	DATE	APPRD.
A		PROPOSAL	SEP.22.08	A.G
B		UPDATED	MAR.11.09	A.G
C		ADD GENERAL TOLERANCES	JAN.06.11	A.G



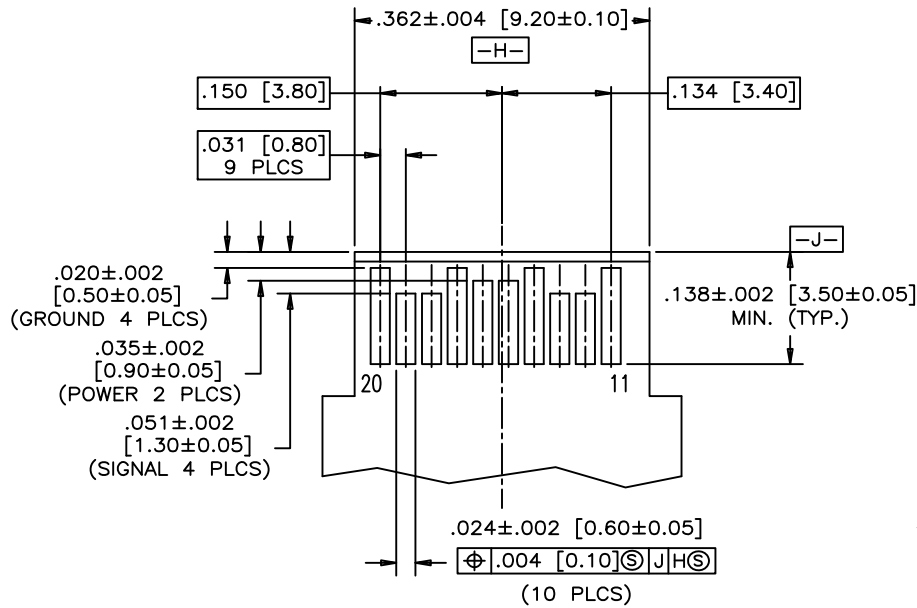
DRAWN	JaneZ	DATE	SEP.22.08
DESIGNED			
CHECKED	J.SI	DATE	SEP.22.08

Amphenol Canada Corp.	
TITLE SFP+ 20 POSITION HIGH SPEED CONNECTOR RECEPTACLE FIXED BOARD, RIGHT ANGLE SMT OPTIONAL PLATING AND LUBRICANT ON MATING	
DWG	DRAWING NO. P-UX76-A20-X00XX
REV.	C
SCALE	2/1
WT.	
SURF.	
SHEET	2 OF 3

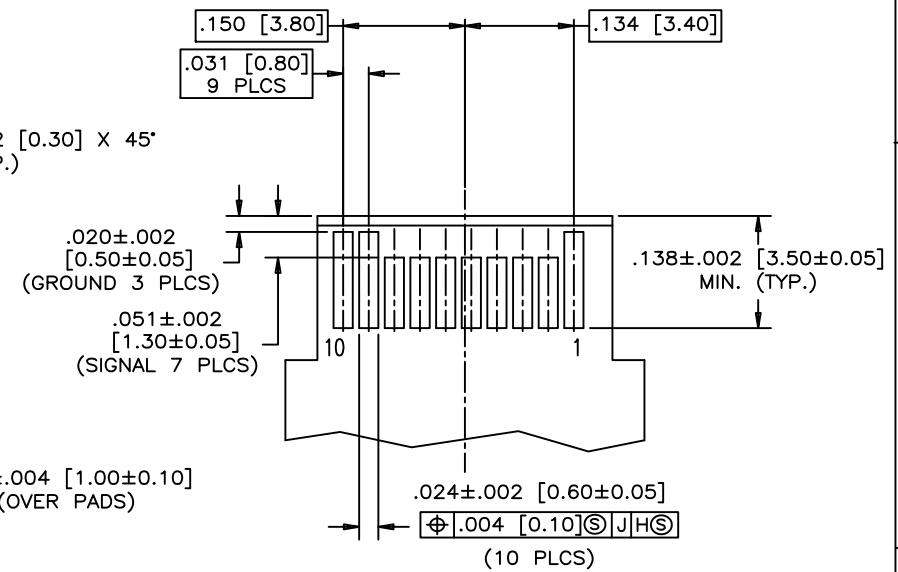
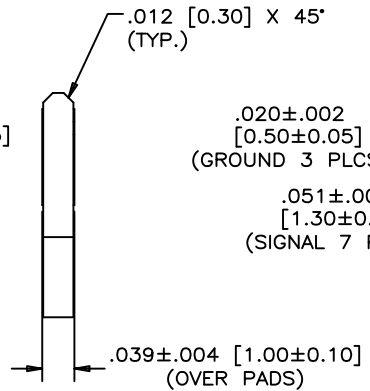
GENERAL TOLERANCES			
DECIMALS	INCH	MILLIMETERS	ENG. REL. NO.
	X.XX±0.004	X.X±0.10	
	X.XXX±0.002	X.XX±0.05	
ANGLES	X°±1°		
	X.X°±0.5°		

THIS DOCUMENT CONTAINS PROPRIETARY INFORMATION AND SUCH INFORMATION MAY NOT BE DISCLOSED TO OTHERS FOR ANY PURPOSE OR USED FOR MANUFACTURING PURPOSES WITHOUT WRITTEN PERMISSION FROM AMPHENOL CANADA CORP.

REVISIONS			
SYM	ZONE	ECN, ERN NO.	DATE APPRD.
A		PROPOSAL	SEP.22.08 A.G
B		UPDATED	MAR.11.09 A.G
C		ADD GENERAL TOLERANCES	JAN.06.11 A.G



TOP VIEW OF BOARD



BOTTOM VIEW OF BOARD

RECOMMENDED LAYOUT DETAIL
MATING TRANSCEIVER PCB

THIS DOCUMENT CONTAINS PROPRIETARY INFORMATION AND SUCH INFORMATION MAY NOT BE DISCLOSED TO OTHERS FOR ANY PURPOSE OR USED FOR MANUFACTURING PURPOSES WITHOUT WRITTEN PERMISSION FROM AMPHENOL CANADA CORP.

DRAWN	JaneZ	DATE	SEP.22.08
DESIGNED			
CHECKED	J.SI	DATE	SEP.22.08

Amphenol Canada Corp.

GENERAL TOLERANCES			DWG. APPRD.	A.G	SEP.22.08
DECIMALS	X.XX±0.004	X.X± 0.10	ENG. REL. NO.		
	X.XXX±0.002	X.XX± 0.05	REF.	X	
ANGLES	X'±1°		DIMENSIONS ARE IN	CODE ID. NO.	
	X.X'±0.5°		INCHES [mm]	03554	

TITLE
SFP+ 20 POSITION HIGH SPEED CONNECTOR
RECEPTACLE FIXED BOARD, RIGHT ANGLE SMT
OPTIONAL PLATING AND LUBRICANT ON MATING

DWG	A	DRAWING NO.	P-UX76-A20-X00XX	REV.	C
SCALE	4:1	WT.		SURF.	
			SHEET	3	OF 3

单击下面可查看定价，库存，交付和生命周期等信息

[>>Amphenol\(安费诺\)](#)