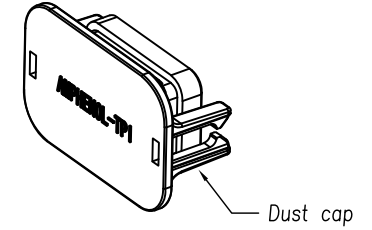
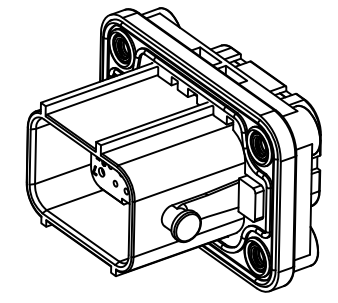
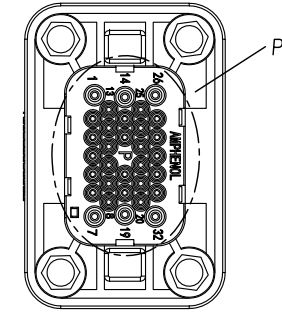
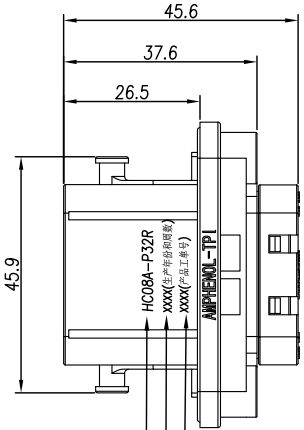
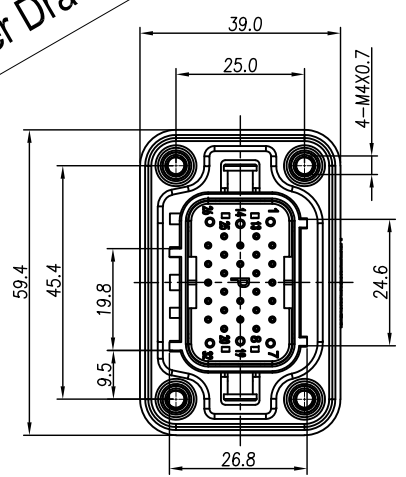


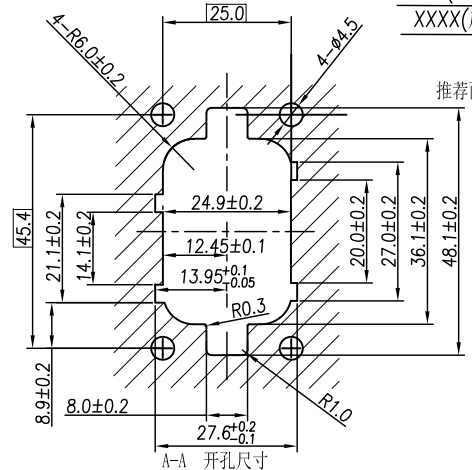
THIS DRAWING IS SUPPLIED FOR INFORMATION ONLY. DESIGN FEATURES, SPECIFICATIONS AND PERFORMANCE DATA SHOWN HEREON ARE THE PROPERTY OF THE AMPHENOL CORPORATION. NO RIGHTS OF REPRODUCTION ARE IMPLIED. ALL DIMENSIONS ARE SUBJECT TO NORMAL MANUFACTURING VARIATIONS.

Customer Drawing

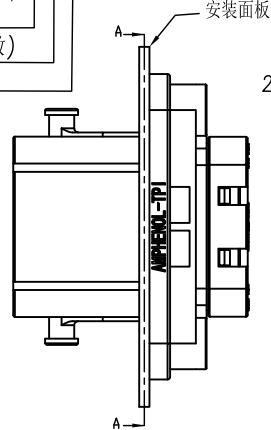
REVISIONS						
REV	ZONE	ECO	DESCRIPTION	DATE	BY	APPR
A	---	---	INITIAL RELEASE	09/20/18	FL	JL
B	---	---	add new applicable terminals	01/16/19	FL	JL
C	---	---	Add plating type information of terminal and attention information	04/29/20	FL	JL
D	---	ECN0220404	Add plating type information of terminal	06/09/22	RJ	JL



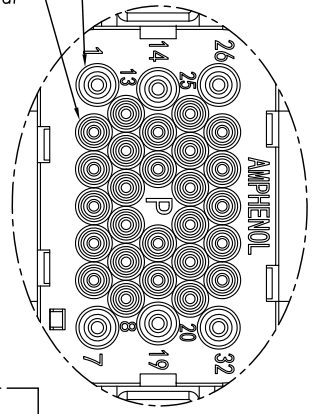
激光打标位置及内容如下:
 HC08A-P32R
 XXXX(生产年份和周数)
 XXXX(产品工单号)



推荐面板开孔方向



安装面板
 6 X Power
 26 X Signal

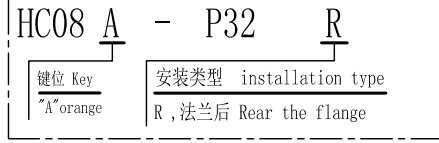


Detail P
 Scale 2:1

- 规格参数 (Spec.):
- 工作温度 Operating Temperature: -40° C~+125° C.
 - 额定电流 Current Rating:
 Power: 13 A MAX.
 Signal: 5 A MAX.
 - 配对线径 Cable Size:
 3.1. Power: 14~18 AWG.
 3.2. Signal: 20~22 AWG.
 - 耐电压 Dielectric Withstanding Voltage: 3000 VDC.
 - 防护等级 Protection Class: IP68 (接头对接时 Mated connector).
 - 机械寿命 Mating Cycle: 100 Min.
 - 法兰盘螺丝安装扭矩
 Screw Assembly Torque on Flange : 1.6~2.4 Nm
 - 对接插头见图纸 Mating plug see drawing: "HC18A-S32"
 - 防火等级 Flame Class: UL94V-0

- 安装面板要求:
- 厚度不超过6.5mm
 加上螺丝头厚度不超过8mm
 - 平面度要求0.15mm
 - 表面粗糙度Ra3.2

订购信息 Ordering Information



注意: 镀金端子不能与镀锡端子互配。划掉的端子料号2022年10月1日起停产。
 Note: The gold-plated terminal cannot be matched with the tin-plated terminal.
 The terminal material number crossed out will be discontinued from October 1, 2022.

适用端子型号 Used with terminal NO.						
端子种类 Terminal type	端子料号 Terminal P/N	电镀种类 Plating type	适合电线 Wire range	Wire OD range 电线外径范围	盲堵种类 Seal type	盲堵料号 Seal P/N
16# (Power)	HCTM21401	镀底镀金 Flash Gold	16~18 AWG	2.24~3.00mm	16# (Power)	AC-CP000383
	HCTM21504	镀底镀锡 Tin Plated				
	HCTM21601	镀底镀金 Flash Gold				
	HCTM16161	镀底镀金 Flash Gold				
	HCTM16164	镀底镀锡 Tin Plated				
20# (Signal)	HCTM12001	镀底镀金 Flash Gold	20~22 AWG	1.35~2.50mm	20# (Signal)	AC-CP000382
	HCTM12104	镀底镀锡 Tin Plated				
	HCTM20101	镀底镀金 Flash Gold				
	HCTM20104	镀底镀锡 Tin Plated				

Amphenol Technical Products International GZ

第三角投影 THIRD ANGLE PROJECTION	页面 SHEET	幅面 SIZE	版次 REV.	比例 SCALE	PART NAME: HC 32CKT Rcpt Rear Code A
1 or 2	A3	D			
签名 SIGNATURE		日期 DATE		UNLESS OTHERWISE SPECIFIED	
制图 DRAWN		日期 DATE		1) All dimensions are in metric (mm).	
审核 CHECKED		日期 DATE		2) Tolerances are as follows:	
批准 APPROVAL		日期 DATE		0 PL DEC ±1.00	
				1 PL DEC ±0.50	
				2 PL DEC ±0.20	
				Angles ±1°	
				DWG NO: HC08A-P32R	
				CUST PART #: N/A	
				CUST REV. -	

单击下面可查看定价，库存，交付和生命周期等信息

[>>Amphenol\(安费诺\)](#)