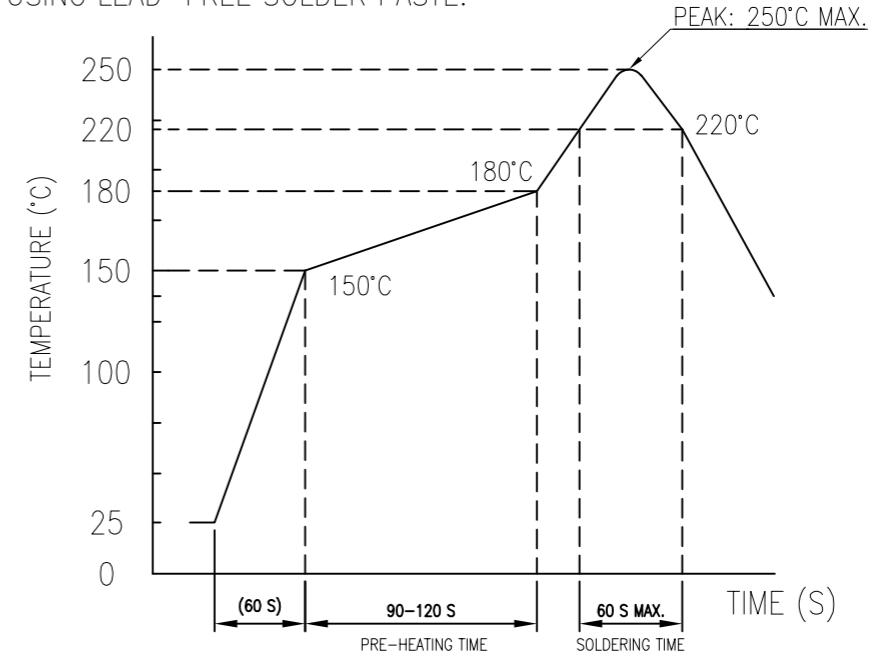


This document is the property of and embodies CONFIDENTIAL and PROPRIETARY information of AOR. No part of the information shown on this document may be used in any way or disclosed to others without the written consent of AOR. © 2019 AOR

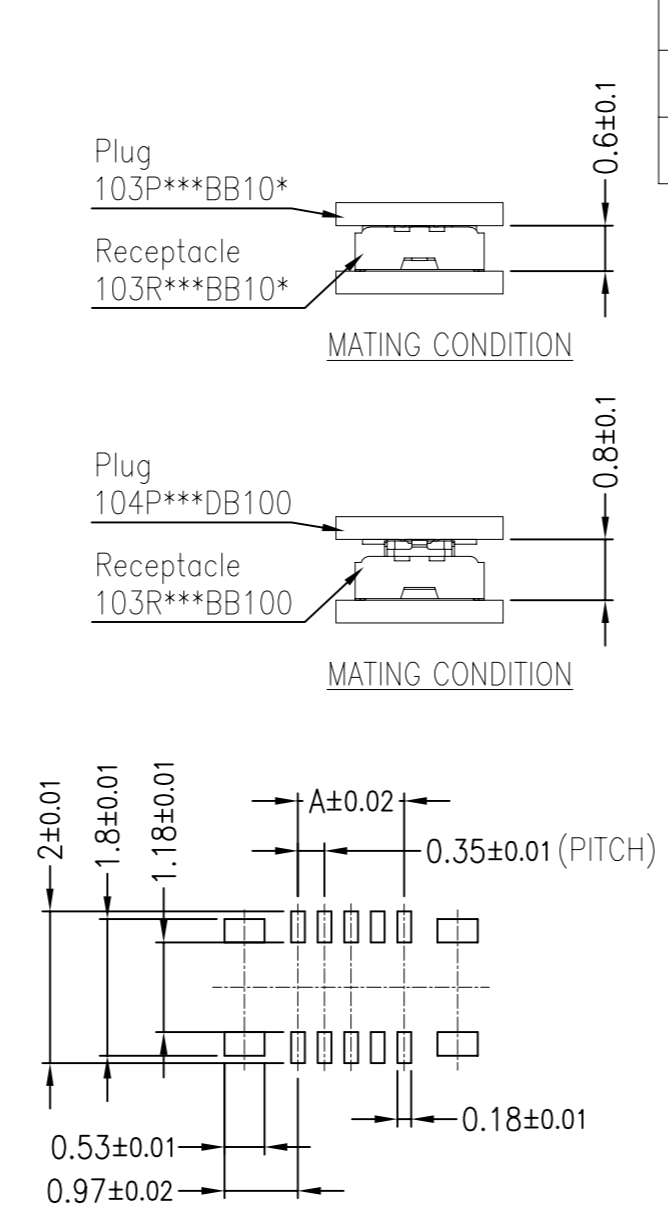
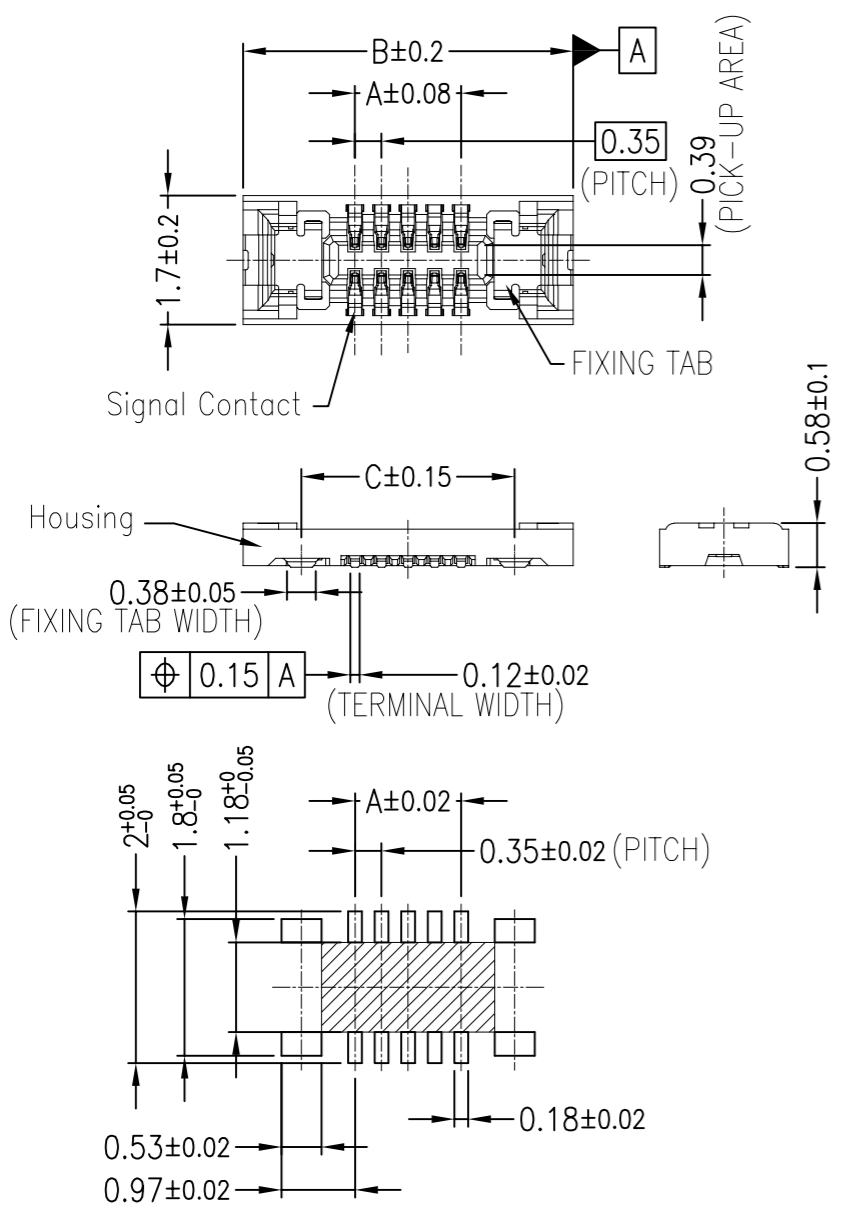


REV.	ECR/ECN No.	DESCRIPTION	DRAWN/DATE	CHECKED/DATE	APPROVED/DATE
X3		ADD 12PIN AND 20PIN	Hanson 12/16/'20	Sam 12/16/'20	Sam 12/16/'20
X4		ADD 8, 40, 48, 60PIN	Hanson 01/05/'21	Sam 01/05/'21	Sam 01/05/'21

9. RECOMMENDED REFLOW TEMPERATURE PROFILE USING LEAD-FREE SOLDER PASTE.



2021.01.06  
文件发行



RECOMMENDED P.W.B. PATTERN LAYOUT  
HATCHING AREA : PATTERN AND SOLDER PROHIBITED AREA

RECOMMENDED STENCIL MASK LAYOUT  
RECOMMENDED STENCIL THICKNESS : T=0.08MM

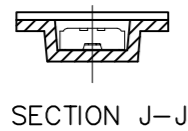
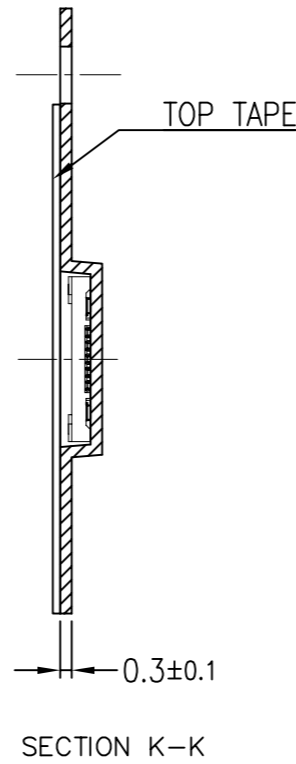
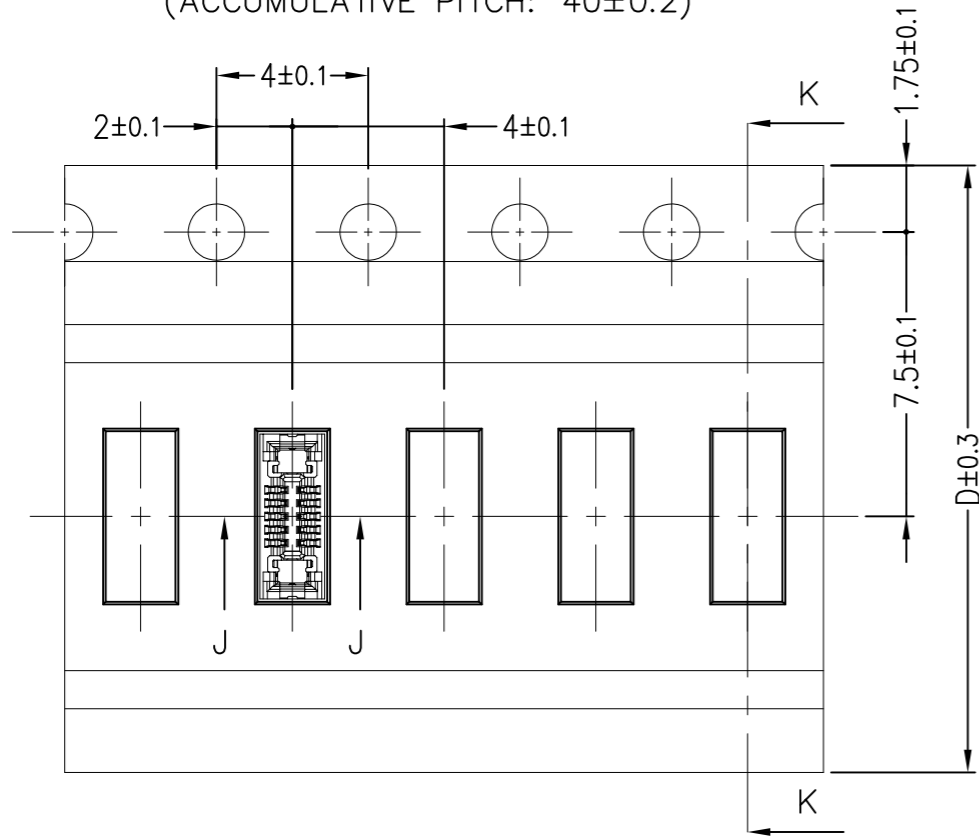
- NOTE
- MATERIALS  
HOUSING : LCP UL94-V0 (COLOR BLACK)  
SIGNAL CONTACT : COPPER ALLOY  
FIXING TAB : COPPER ALLOY
  - PLATING  
SIGNAL CONTACT : Au FLASH OVER Ni UNDER PLATING (Ni BARRIER, LUBRICANT)  
FIXING TAB : Au FLASH OVER Ni UNDER PLATING (ONLY CONTACT AND TAIL AREA)
  - MATE WITH: 103P\*\*\*BB10\* / 104P\*\*\*DB10\*
  - CO-PLANARITY FOR SIGNAL CONTACT TERMINALS AND FIXING TAB MUST BE 0.08mm MAX.
  - THIS PRODUCT MEETS RoHS AND SONY SS-00259.
  - THE HOUSING WILL WITHSTAND EXPOSURE TO 250°C PEAK TEMPERATURE FOR 10SECONDS IN A REFLOW SOLDERING OVEN.
  - THE DOCUMENT MAY BE CHANGED WITHOUT PRIOR NOTICE.
  - PART NUMBER: 103R\*\*\*BB10\*

32	11.56	13.10	10.15	103R060BB10*	60 pin
24	9.81	11.35	8.40	103R050BB10*	50 pin
24	9.46	11.00	8.05	103R048BB10*	48 pin
24	8.06	9.60	6.65	103R040BB10*	40 pin
24	7.01	8.55	5.60	103R034BB10*	34 pin
16	6.31	7.85	4.90	103R030BB10*	30 pin
16	5.26	6.80	3.85	103R024BB10*	24 pin
16	4.56	6.10	3.15	103R020BB10*	20 pin
16	3.86	5.40	2.45	103R016BB10*	16 pin
16	3.51	5.05	2.10	103R014BB10*	14 pin
16	3.16	4.70	1.75	103R012BB10*	12 pin
16	2.81	4.35	1.40	103R010BB10*	10 pin
16	2.46	4.00	1.05	103R008BB10*	8 pin
16	2.11	3.65	0.70	103R006BB10*	6 pin
16	1.76	3.30	0.35	103R004BB10*	4 pin
D	C	B	A	Part Number	Pos.

PIN POS. ———— 0: MASS PRODUCTION PACKAGE SPEC (15000PCS/REEL)  
9: SAMPLE PACKAGE SPEC (2000PCS/REEL)

UNLESS OTHERWISE SPECIFIED TOLERANCES		ANGLE OF PROJECTION		 Amphenol Aorora Technology (Huizhou) Co.,Ltd	
X.	±0.30	X. °	± 3'		
X.X	±0.25	X.X °	± 2'	DOC TYP Customer Drw	
X.XX	±0.20	X.XX °	± 1'	DRAWN DATE Hanson 2020-02-05	TITLE: Customer Drw For 0.35mm Pitch SH=0.6/0.8mm BTB Connector 103 Series Receptacle Assembly
X.XXX	±0.15	X.XXX °	± 1'	DESIGN DATE Sam 2020-02-05	SIZE PART NUMBER: A3 103R***BB10*
LINEAR DIMS		ANGLES DIMS		CHECKED DATE Sam 2020-02-05	REV. X4
DWG NO.: A-S0590				APPROVED DATE Leo 2020-02-05	SCALE 10:1 UNIT: mm SHEET 1 OF 3
MATERIAL	SEE NOTES				
FINISHED	SEE NOTES				

(ACCUMULATIVE PITCH:  $40 \pm 0.2$ )



PULL OUT DIRECTION

103R\*\*\*BB100: MASS PRODUCTION PACKAGE SPEC (15000PCS/REEL)

AIR CAP: 2PCS  
380mm\*380mm

VACUUM BAG  
L550\*W435\*T0.10

DESICCANT

WATER PROOF 1PCS  
L700\*W600\*T0.05

BIG CARTON: 1PCS  
L385\*W385\*H130

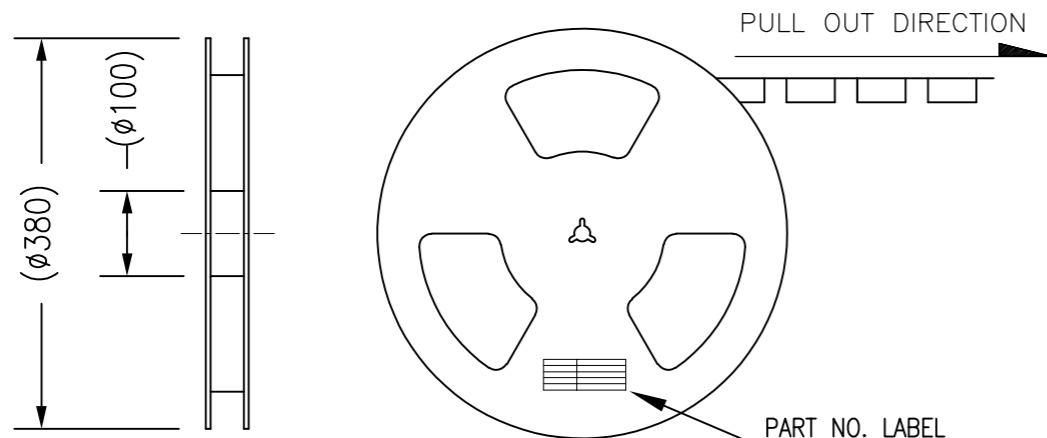
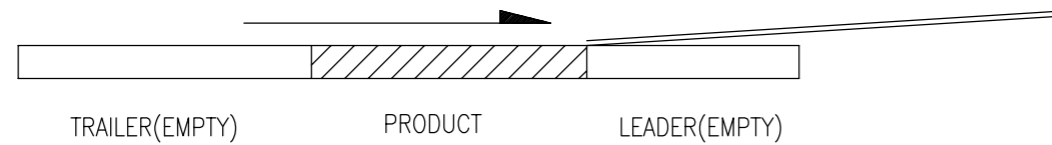
TOTAL N LAYERS

TRANSPARENT TAPE

SIDE LABEL

103R\*\*\*BB100: MASS PRODUCTION PACKAGE SPEC (15000PCS/REEL)

PULL OUT DIRECTION



NOTES:

1. PEELING FORCE: 0.1N~0.7N (10~70gf);  
PEELING ANGLE: 165°~180°;  
PEELING SPEED: 300mm/minutes.
2. MATERIAL:  
2.1 CARRIER TAPE: HIPS, T=0.3, CLEAR;  
2.2 REEL: HIPS BLUE;  
2.3 SHIM: PE, CLEAR;
3. PRIMARY PACKING: 15000PCS/REEL;
4. SECONDARY PACKING: "5" REELS/BIG CARTON;  
("75000"=5\*15000/BIG CARTON)

UNLESS OTHERWISE SPECIFIED TOLERANCES		ANGLE OF PROJECTION	
X.	±0.30	X. °	± 5'
X.X	±0.25	X.X °	± 4'
X.XX	±0.20	X.XX °	± 3'
X.XXX	±0.15	X.XXX °	± 2'
LINEAR DIMS		ANGLES DIMS	
DOC TYPE: Emboss Package DRAWN DATE: Hanson 2020-02-05 DESIGN DATE: Sam 2020-02-05 CHECKED DATE: Sam 2020-02-05 APPROVED DATE: Leo 2020-02-05			
DWG NO.:	A-S0590		
MATERIAL	SEE NOTES		
FINISHED	SEE NOTES		



Amphenol Aorora Technology (Huizhou) Co.,Ltd

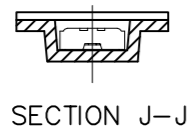
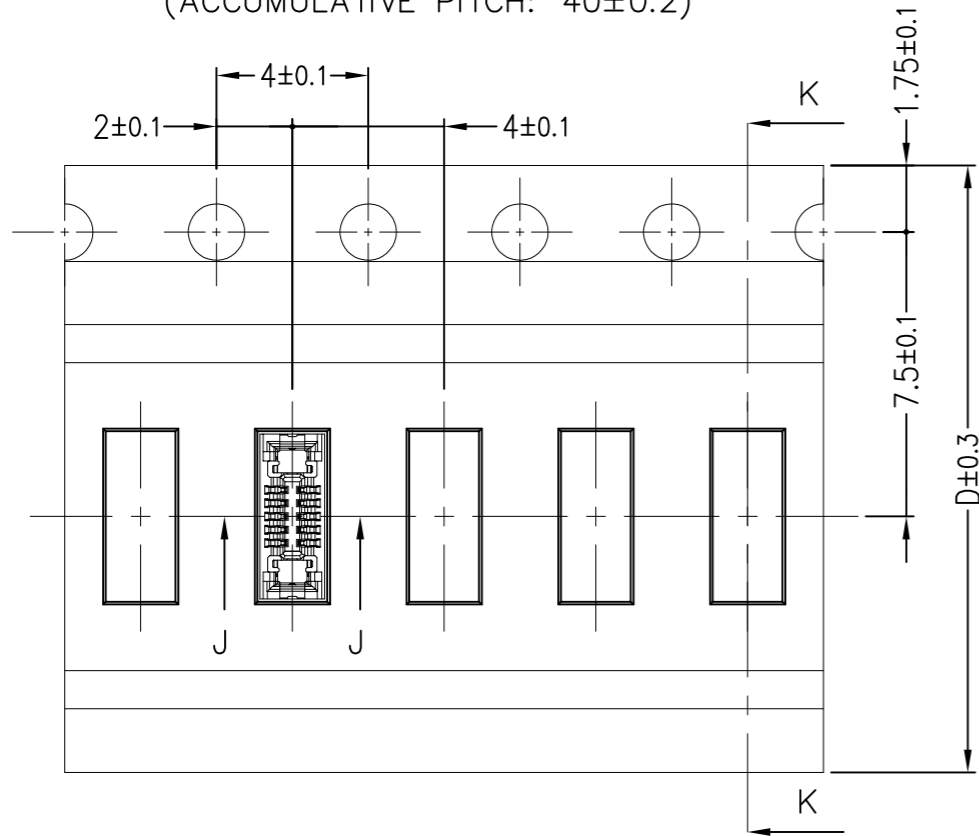
TITLE: Customer Drw For 0.35mm Pitch SH=0.6/0.8mm BTB Connector 103 Series Receptacle Assembly

SIZE: A3 PART NUMBER: 103R\*\*\*BB10\* REV. X4

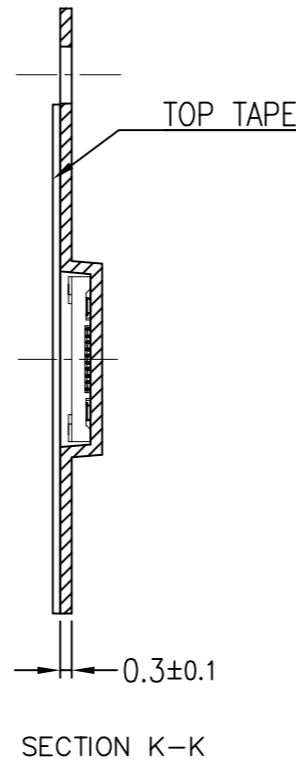
SCALE: 1:1 UNIT: mm SHEET 2 OF 3

2021.01.06  
文件发行

(ACCUMULATIVE PITCH:  $40 \pm 0.2$ )

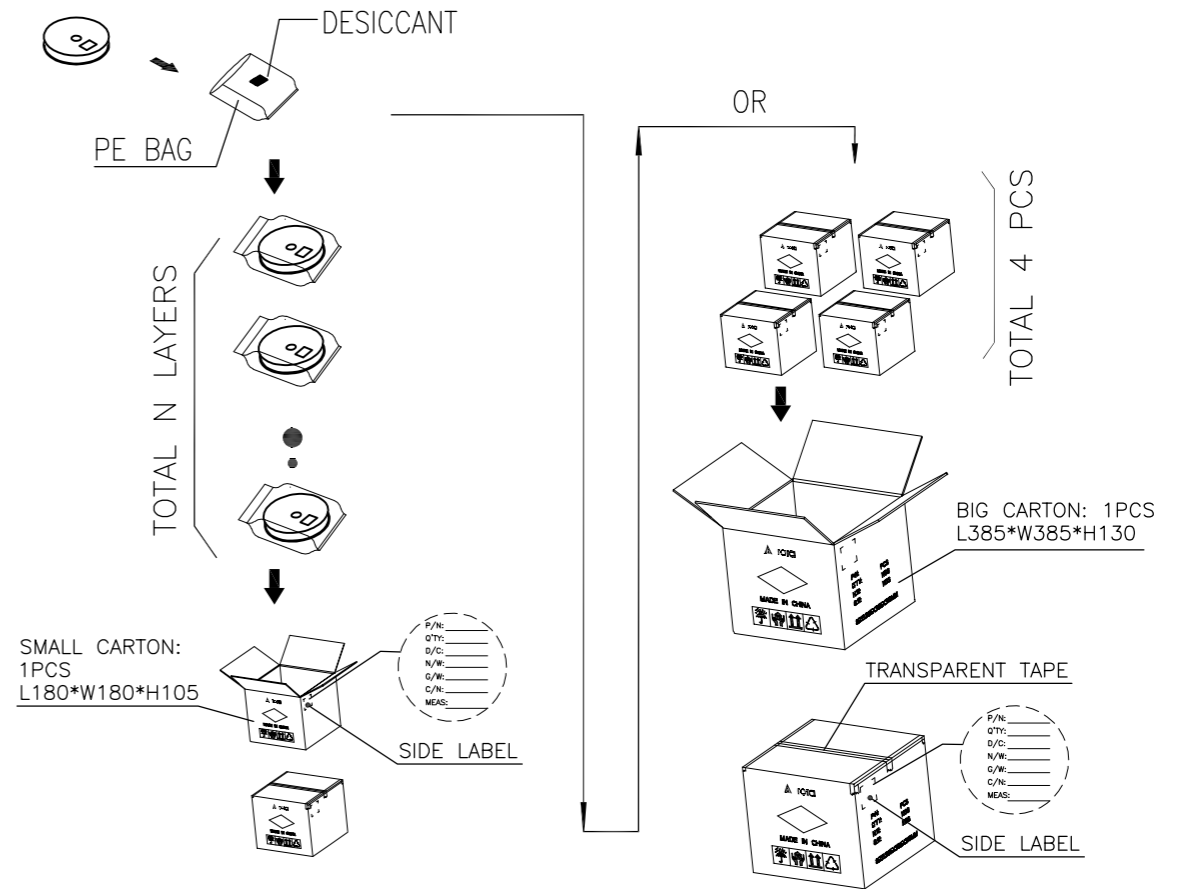


PULL OUT DIRECTION

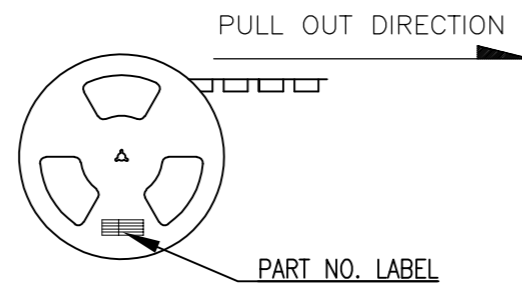
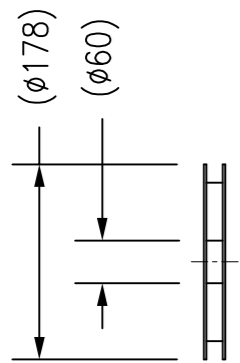
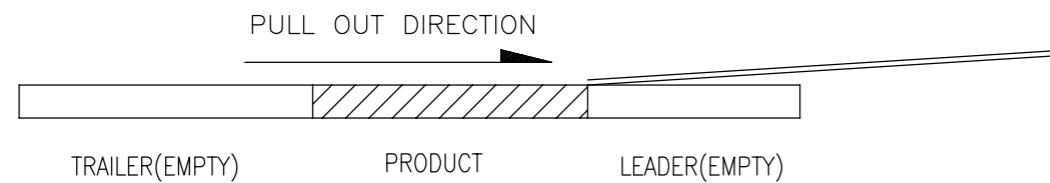


SECTION K-K

103R\*\*\*BB109: SAMPLE PACKAGE SPEC (2000PCS/REEL)



103R\*\*\*BB109: SAMPLE PACKAGE SPEC (2000PCS/REEL)



NOTES:

1. PEELING FORCE:  $0.1N \sim 0.7N$  (10~70gf);  
PEELING ANGLE:  $165^\circ \sim 180^\circ$ ;  
PEELING SPEED: 300mm/minutes.
2. MATERIAL:  
1.1 CARRIER TAPE: HIPS, T=0.3, CLEAR;  
1.2 REEL: HIPS WHITE;  
1.3 SHIM: PE, CLEAR;
3. PRIMARY PACKING: 2000PCS/REEL;
4. SECONDARY PACKING:  
5 REELS/SMALL CARTON; 4 SMALL CARTON/1 BIG CARTON;  
("40000"=1 BIG CARTON= 4 SMALL CARTON = 4\*5\*2000 PCS)

UNLESS OTHERWISE SPECIFIED TOLERANCES				ANGLE OF PROJECTION		 Amphenol Aorora Technology (Huizhou) Co.,Ltd
X.	$\pm 0.30$	X. °	$\pm 5'$			
X.X	$\pm 0.25$	X.X °	$\pm 4'$			
X.XX	$\pm 0.20$	X.XX °	$\pm 3'$	DOC TYP Emboss Package		SIZE PART NUMBER: REV. A3 103R***BB10* X4
X.XXX	$\pm 0.15$	X.XXX °	$\pm 2'$	DRAWN DATE Hanson 2020-02-05		
LINEAR DIMS		ANGLES DIMS		DESIGN DATE Sam 2020-02-05	SCALE 1:1 UNIT: mm SHEET 3 OF 3	
DWG NO.: A-S0590				CHECKED DATE Sam 2020-02-05		
MATERIAL		SEE NOTES		APPROVED DATE Leo 2020-02-05		
FINISHED		SEE NOTES				

2021.01.06  
文件发行

This document is the property of and embodies CONFIDENTIAL and PROPRIETARY information of AOR. No part of the information shown on this document may be used in any way or disclosed to others without the written consent of AOR. © 2019 AOR

Amphenol AORORA

单击下面可查看定价，库存，交付和生命周期等信息

[>>Amphenol\(安费诺\)](#)