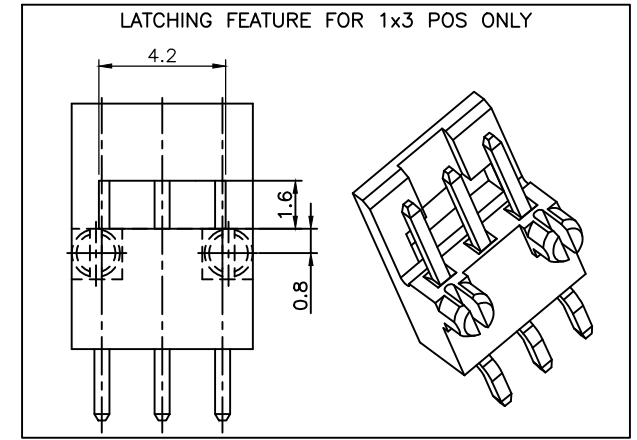
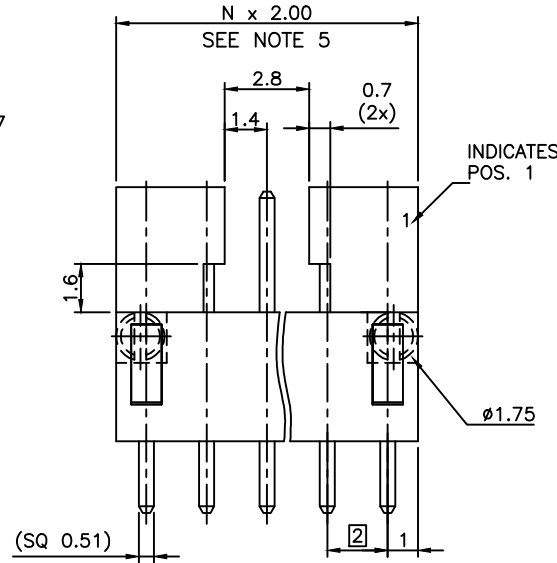


PRODUCT NUMBER
95000-XXXXLF

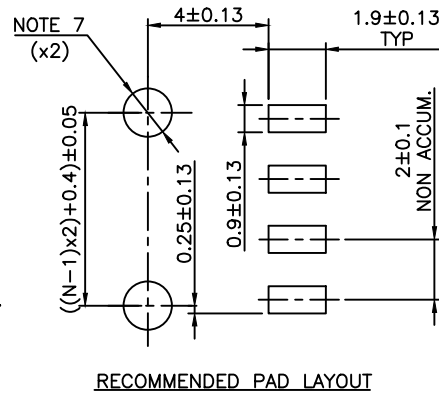
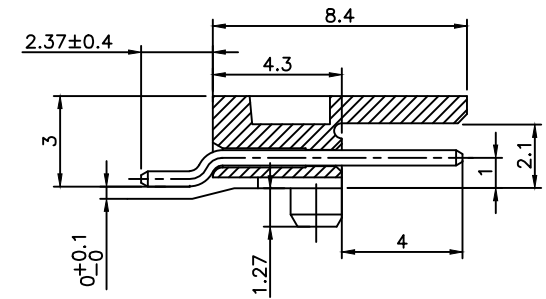
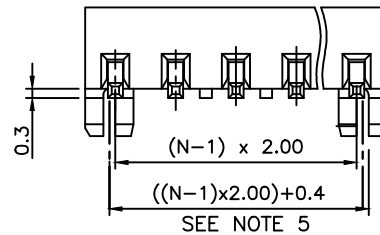
PLATING ————
 ———— RoHS COMPATIBLE, SEE NOTE 6
 ———— PACKAGING TYPE, NOTE 3
 ———— TOTAL NB OF POSITIONS, 3 TO 17

- 0 = 0.20µm GOLD/GXT ON CONTACT AREA
2.0µm MIN MATTE TIN ON TAILS
- 1 = 0.76µm GOLD/GXT ON CONTACT AREA
2.0µm MIN MATTE TIN ON TAILS
- 3 = 0.38µm GOLD/GXT ON CONTACT AREA
2.0µm MIN MATTE TIN ON TAILS
- T = FULL MATTE TIN 2µm-5µm
1.27µm Ni MIN UNDERPLATING



NOTES:

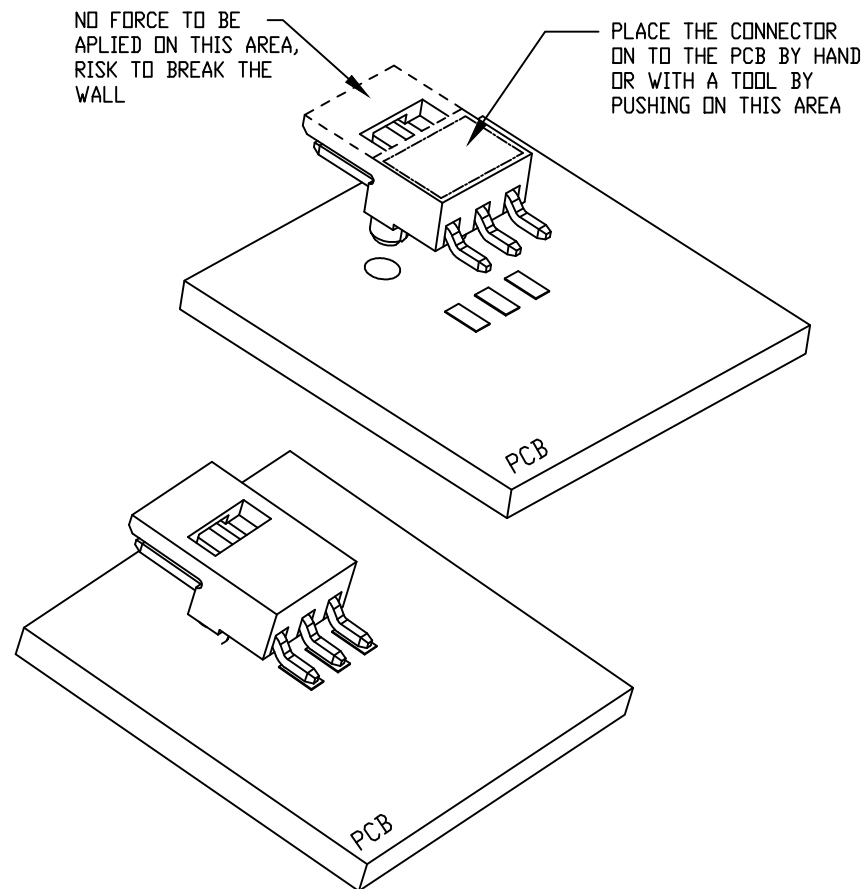
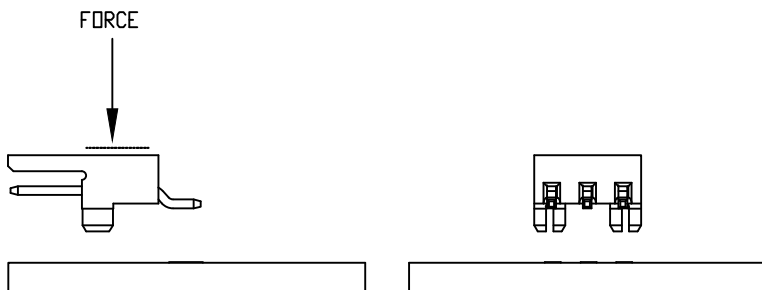
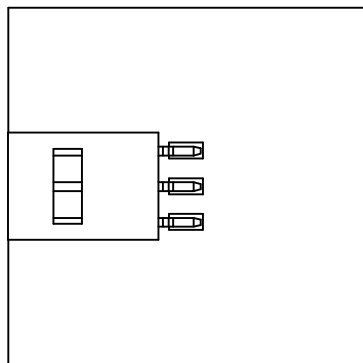
- 1 - HOUSING MAT'L : HIGH TEMPERATURE THERMOPLASTIC. UL94V-0 COLOR: CREAM
- 2 - PIN MATERIAL : COPPER ALLOY
- 3 - PACKAGING :
= POLY BAGS
T = TUBE, FROM 04 POS UP TO 17 POS
TR = TAPE & REEL AS AVAILABLE.
- 4 - 7N MIN RETENTION IN EITHER DIRECTION
- 5 - TO DETERMINE DIMENSIONS :
N = NUMBER OF POSITIONS
- 6 - RoHS COMPATIBLE PRODUCT SPECIFICATIONS
 - a - MANUFACTURING PROCESS COMPATIBILITY
 - THE HOUSING WILL WITHSTAND EXPOSURE TO 260°C PEAK TEMPERATURE FOR 30 SECONDES MAX IN A CONVECTION, INFRA-RED OR VAPOR PHASE OR REFLOW OVEN.
 - b - LABELLING:
 - MEETS PACKAGING SPECS AS PER GS-14-920
 - c - THIS PRODUCT MEETS EUROPEAN DIRECTIVES AND OTHER COUNTRY REGULATIONS AS DISCRIBED IN GS-47-0004
- 7 - HOLE DIMENSION TO BE $\phi 1.60 \pm 0.07$ FOR INTERFERENCE FIT APPLICATIONS, SEE SHEET 2.
HOLE DIMENSION TO BE $\phi 1.95 \pm 0.07$ FOR NON INTERFERENCE FIT (LOCATIONAL) APPLICATIONS



mat'l. code		surface		tolerance		projection		product family	
		ISO 1302 ✓		ISO 406 ISO 1101		mm		MINITEK	
ltr		ecn no dr date		tolerances unless otherwise specified		mm		title	
S		B-19986 JCO 15.01.13		angles		.x ±0.3		MINITEK SMT HDR SR POLARIZATION & LATCHING	
T		B-19995 JCO 15.01.15		linear		.xx ±0.13			
U		F-23052 AMA 16.01.15		±2		xxx ±0.05		scale 7:1	
		dr		J. FABRE		13.01.07		dwg no	
N		B-15804 JCO 13.08.28		enrg		J. FABRE 13.01.07		sheet 1 of 2	
P		B-16822 JCO 14.01.23		chr		JL CORDIER 13.01.07		size	
R		B-19187 LMU 14.10.24		appd		JMC 13.01.07		95000 A3	
sheet		revision		U		A		type	
index		sheet		1		2		CUSTOMER Drawing	

Copyright FCJ
 FCconnect.com
 form: A3

RECOMMENDATION TO PLACE THE CONNECTOR ONTO THE PCB



NO FORCE TO BE APPLIED ON THIS AREA, RISK TO BREAK THE WALL

PLACE THE CONNECTOR ON TO THE PCB BY HAND OR WITH A TOOL BY PUSHING ON THIS AREA



FCIconnect.com

Copyright FCI

mat'l. code		N/A		surface		ISO 1302 ✓		tolerance		ISO 406 ISO 1101		projection		product family	
ltr		ecn no		dr		date		tolerances unless otherwise specified		mm		title		MINITEK	
A		B-19986		J.FA		15.01.13		angles		linear		MINITEK SMT HDR SR		POLARIZATION & LATCHING	
								0°±x'		.00±.00x		scale 1:1		dwg no	
								dr		J.FABRE		15.01.07		sheet of 2	
								engr		L.MULIN		15.01.07		size	
								chr		J.COMPAGNON		15.01.12		A3	
								appd		JCO		15.01.13		type	
sheet index		revision sheet												Product Customer Drawing	



单击下面可查看定价，库存，交付和生命周期等信息

[>>Amphenol\(安费诺\)](#)