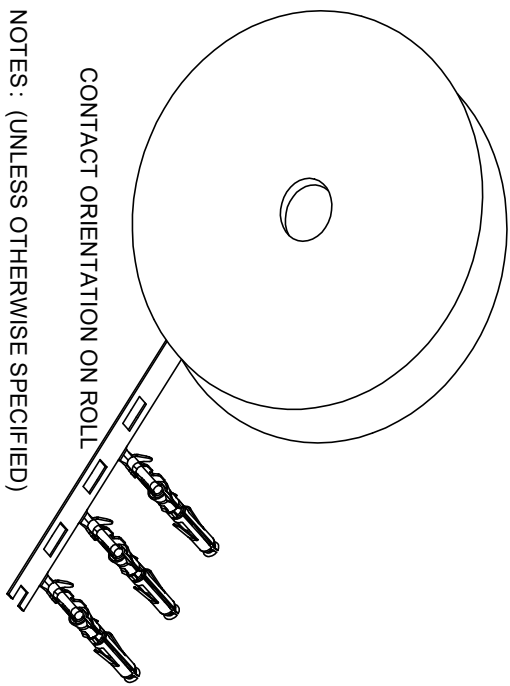
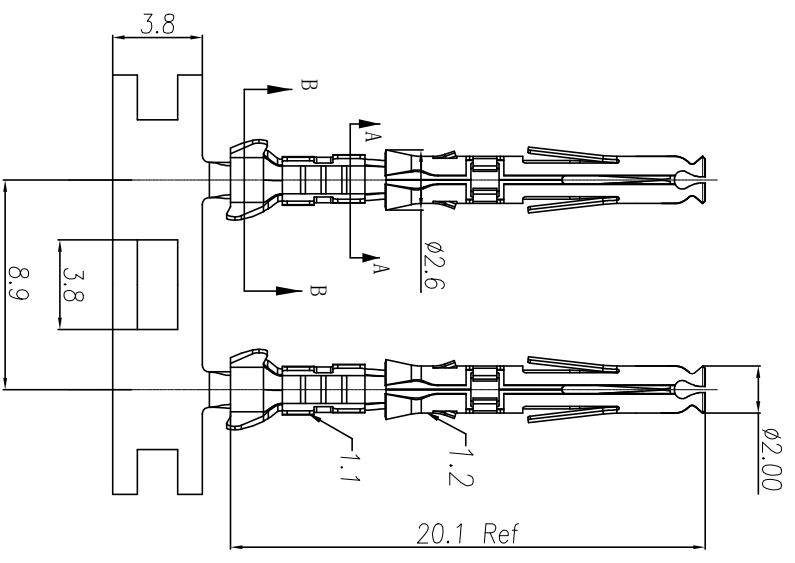
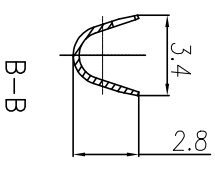
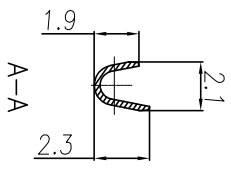


REVISIONS				
REV	ECO	DESCRIPTION	DATE	BY APPR
B1	-	RELEASED DRAWING	JAN-18-2014	ARROW TOMMY
B2	-	CHANGE HAND CRIMPER	Nov-8-19	Flan Tommy



- NOTES: (UNLESS OTHERWISE SPECIFIED)
- MATERIAL:
 - CONTACT BODY: COPPER ALLOY.
 - OUTER SPRING: STAINLESS STEEL.
 - SPECIFICATIONS:
 - CURRENT RATING: 5A MAX.
 - TERMINATION TYPE: CRIMPING.
 - WIRE RANGE: 22~20AWG.
 - WIRE INSULATION DIA(MAX): $\varnothing 2.6$ mm.
 - ROHS COMPLIANT.
 - ALL DIMENSIONS ARE FOR REFERENCE USE ONLY.
5. AVAILABLE TOOLS:
- HAND CRIMPER: MFX-3958 ^{B2}
 - CRIMP APPLICATOR: MFX-3957.
 - EXTRACTION TOOL: QXRT20.



P/N	CONTACT PLATING(MATING AREA)
SS20W1T	TIN PLATING OVER NICKEL.
SS20W1F	GOLD FLASH PLATING OVER NICKEL.
SS20W1G10	10 μ "GOLD PLATING OVER NICKEL.
SS20W1G15	15 μ "GOLD PLATING OVER NICKEL.
SS20W1G30	30 μ "GOLD PLATING OVER NICKEL.

QUANTITY	PART NUMBER	DESCRIPTION	ITEM
MATERIALS LIST			
<p>UNLESS OTHERWISE SPECIFIED</p> <p>1) All dimensions are in millimeters. 2) Tolerances are as follows: 1 Pt. DEC 40-90 Fractions 1/16 3 Pt. DEC 20-90 3) Note reference = Δ</p>			
<p>SIGNATURES</p> <p>DRAWN: RH DATE: Nov-8-19</p> <p>CHECKED: MH DATE: Nov-8-19</p> <p>ENGINEER: _____</p> <p>APPROVE: Tommy DATE: Nov-8-19</p> <p>CUSTOMER: _____</p>		<p>ECO-MATE SOCKET CONTACT, STAMPED, 20-22AWG, SIZE 20</p> <p>Amphenol</p> <p>Sine Systems - www.amphenol-sine.com 44724 Montley Drive Clinton Township, MI 48038</p>	
<p>PROCESS SPECIFICATIONS</p> <p>NEXT ASBY:</p>		<p>SIZE TYPE: B C-</p> <p>DWG NO: SS20W1XX</p> <p>SCALE: NONE</p> <p>REVISION: B2</p>	

单击下面可查看定价，库存，交付和生命周期等信息

[>>Amphenol\(安费诺\)](#)