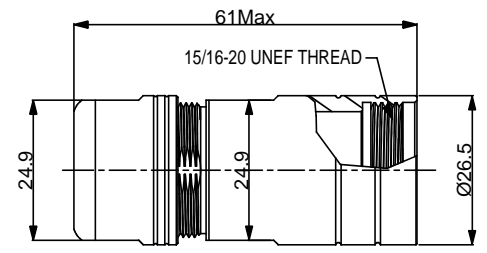
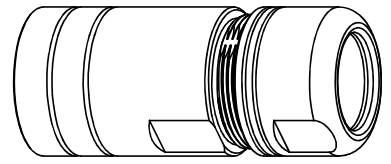
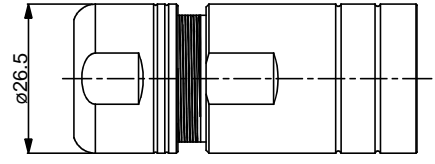
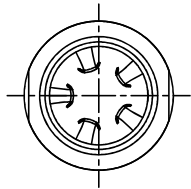


REVISIONS					
REV	ECO	DESCRIPTION	DATE	BY	APPR
B1	-	RELEASED DRAWING	JAN-18-2014	ARROW	TOMMY



P/N	SHIELDING RING	CABLE RANGE
RT0L-16CG-C1	WITHOUT	Ø9.0-Ø14.5mm
RT0L-16CG-C2	WITHOUT	Ø13.5-Ø17mm
RT0L-16CG-S1	WITH	Ø9.0-Ø14.5mm
RT0L-16CG-S2	WITH	Ø13.5-Ø17mm

NOTES : (UNLESS OTHERWISE SPECIFIED)

- 1. MATERIAL :**
- 1.1. NUT : ZINC ALLOY, NICKEL PLATED.
 - 1.2. CLAMP INSERT : THERMOPLASTIC UL94 V-0.
 - 1.3. EMI SHIELDING RING : STAINLESS STEEL.
 - 1.4. BACK SHELL : ZINC ALLOY, NICKEL PLATED.
 - 1.5. O-RING: SILICONE RUBBER.
 - 1.6. GROMMET : RUBBER.
2. ROHS COMPLIANT.
3. ALL DIMENSIONS ARE FOR REFERENCE USE ONLY.

QUANTITY	PART NUMBER	DESCRIPTION	ITEM
MATERIALS LIST			
UNLESS OTHERWISE SPECIFIED 1) All dimensions are in metric(mm). 2) Tolerances are as follows: 1 PL DEC ±0.30 Fractions ±1/64 2 PL DEC ±0.15 Angles ±1° 3 PL DEC ±0.08 3) Note reference =		SIGNATURES DRAWN: ARROW CHECKED: ENGINEER: APPROVAL:	DATE JAN-17-2014
MATERIAL SPECIFICATIONS: THIS DRAWING IS SUPPLIED FOR INFORMATION ONLY. DESIGN FEATURES, SPECIFICATIONS AND PERFORMANCE DATA SHOWN HEREON ARE THE PROPERTY OF THE AMPHENOL CORPORATION. NO RIGHTS OF REPRODUCTION ARE IMPLIED. ALL DIMENSIONS ARE SUBJECT TO NORMAL MANUFACTURING VARIATIONS.		 Sine Systems - www.amphenol-sine.com 44724 Morley Drive Clinton Township, MI 48036	
PROCESS SPECIFICATIONS:		CUSTOMER:	ECO-MATE, CORD GRIP SIZE 16
NEXT ASSY:		SIZE B TYPE C- DWG NO. RT0L-16CG-xx REVISION B1	SCALE NONE SHEET 1 OF 1

TITLE: ECO-MATE, CORD GRIP, SIZE 16
 DWG NO.: RT0L-16CG-xx
 REV: B1
 SH: 1
 OF: 1

单击下面可查看定价，库存，交付和生命周期等信息

[>>Amphenol\(安费诺\)](#)