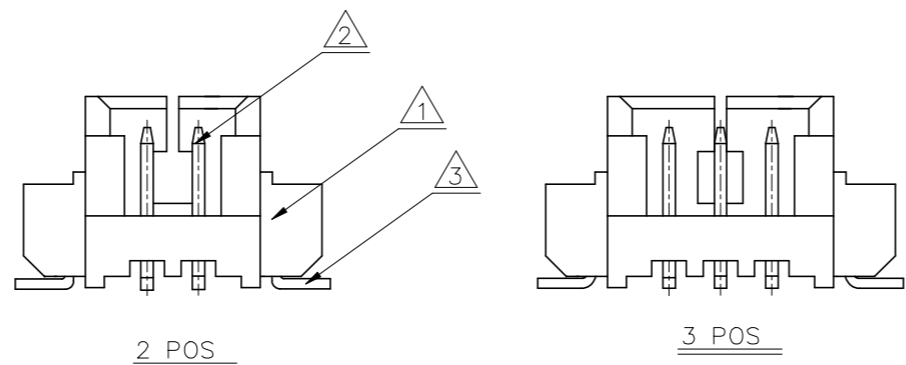
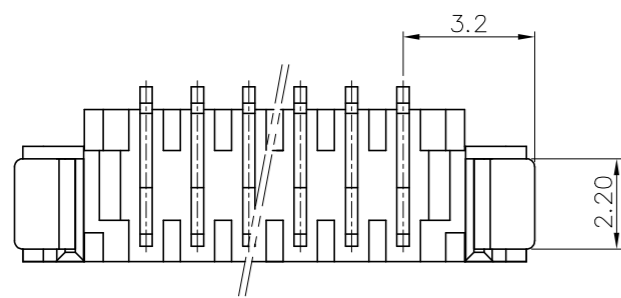
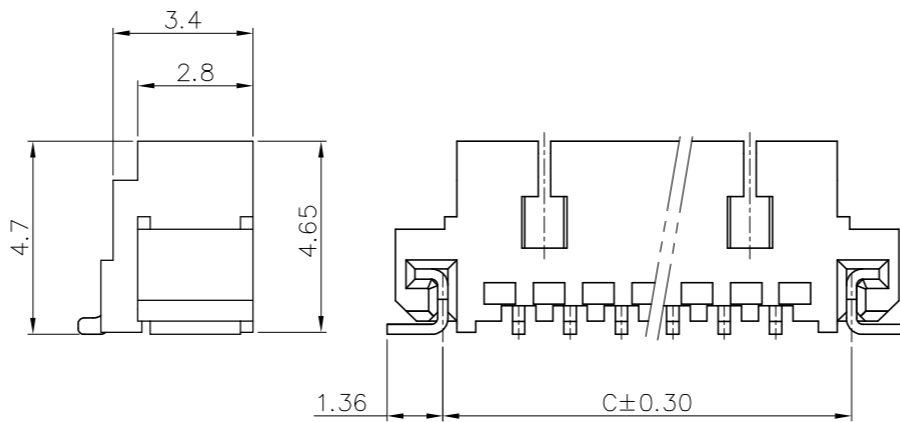
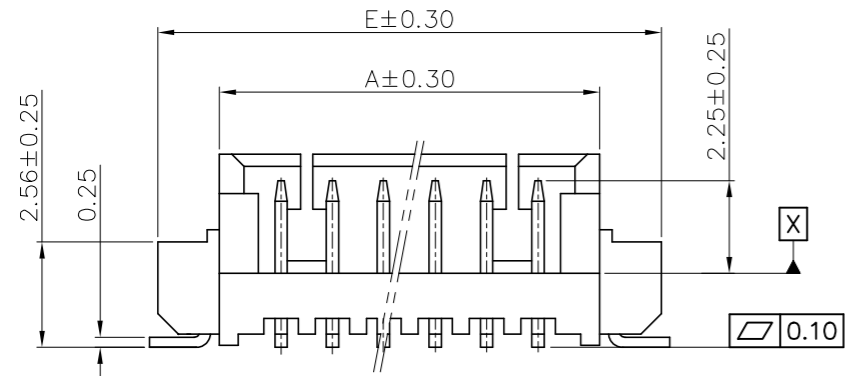


P.C. BOARD LAYOUT
PCB TOLERANCES: ±0.05



NOTES

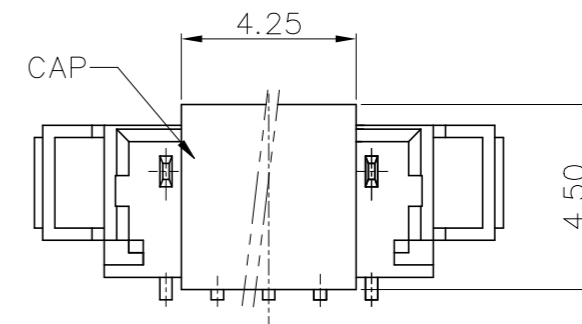
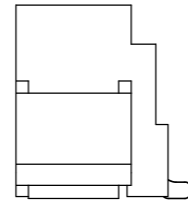
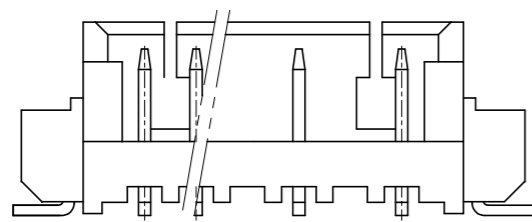
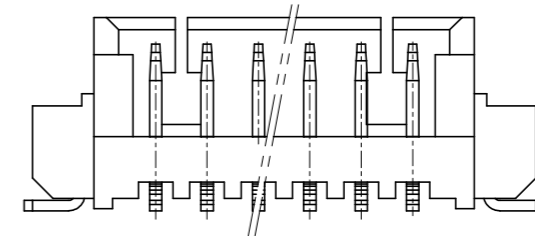
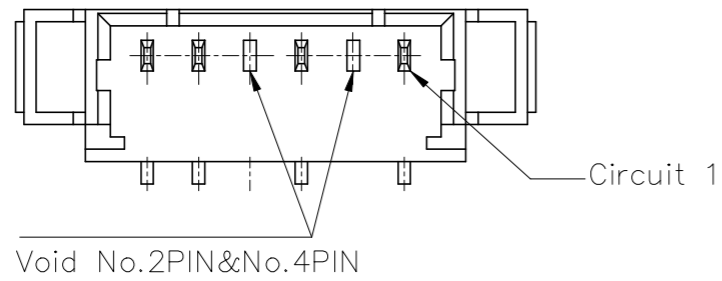
- SPECIFICATIONS
Current Rating: 1A AC,DC
Voltage Rating: 125V AC,DC
Temperature Range: -40°C ~ +105°C
Contact Resistance: 20mΩ Max.
Insulation Resistance: 100MΩ Min.
Withstanding Voltage: 500V AC/minute
- Material & finish:
Housing: Thermoplastic, UL94V-0
Contact and metal hold-down: Phosphor Bronze
Plating of contact area: Matte Tin or gold plating over Nickel
Plating of solder area: Tin plated over Nickel
Plating of hold-down: Matte Tin over Nickel
- Crimping application hand tool P/N: 10118656-1000
- Ordering Information & Dimensions:
10114828- X X X XX X LF
Material _____
1: Natural LCP
2: Black LCP
VOID: NORMAL
1: SEE SHEET 2(VOID 2&4 PIN)
Pin counts from 02~15
Packaging
1: Tape & Reel
2: Tape & Reel+ Cap(sheet 2)

Plating _____
0: 120u" Matte Tin
1: Gold Flash
3: Gold 30u"

Part No.	Dimensions					
	POS	A	B	C	D	E
10114828-xxx02LF	2	4.25	1.25±0.10	4.94	3.05	7.25
10114828-xxx03LF	3	5.50	2.50±0.10	6.19	4.30	8.50
10114828-xxx04LF	4	6.75	3.75±0.10	7.44	5.55	9.75
10114828-xxx05LF	5	8.00	5.00±0.10	8.69	6.80	11.00
10114828-xxx06LF	6	9.25	6.25±0.15	9.94	8.05	12.25
10114828-xxx07LF	7	10.50	7.50±0.15	11.19	9.30	13.50
10114828-xxx08LF	8	11.75	8.75±0.15	12.44	10.55	14.75
10114828-xxx09LF	9	13.00	10.00±0.15	13.69	11.80	16.00
10114828-xxx10LF	10	14.25	11.25±0.20	14.94	13.05	17.25
10114828-xxx11LF	11	15.50	12.50±0.20	16.19	14.30	18.50
10114828-xxx12LF	12	16.75	13.75±0.20	17.44	15.55	19.75
10114828-xxx13LF	13	18.00	15.00±0.20	18.69	16.80	21.00
10114828-xxx14LF	14	19.25	16.25±0.20	19.94	18.05	22.25
10114828-xxx15LF	15	20.50	17.50±0.20	21.19	19.30	23.50

ITEM	MATERIAL	DESCRIPTION
①	THERMOPLASTIC HIGH TEMPERATURE	HOUSING
②	COPPER ALLOY	TERMINAL
③	COPPER ALLOY	HOLD DOWN

mat'l. code			surface ISO 1302 ✓		tolerance ISO 406/ISO 1101	projection	product family -			
ltr	ecn no	dr	date		tolerances unless otherwise specified			title		
L	ELX-N-47289	JH	2023/01/17		angles	.0±.5		WTB 1.25MM WAFER 180° SMT		
					linear	.00±.25	scale 1:1	dwg no		
					0°±2'	.000±.010		sheet1 of 2		
dr		Jeffrey.Huang		-				size		
enr		Jeffrey.Huang		-				A4		
chr		TIM YAO		-				10114828		
appd		TIM YAO		-				Product Customer Drawing		
sheet index	revision sheet	L	1~2							



ASSEMBLY CAP

10114828-XXXXX1LF

mat'l. code				surface ISO 1302 <input checked="" type="checkbox"/> ISO 406/ISO 1101		tolerance ISO 406/ISO 1101		projection 		product family -							
ltr				ecn no		dr		date		tolerances unless otherwise specified		title					
L				ELX-N-47289		JH		2023/01/17		.0±.5		WTB 1.25MM WAFER 180° SMT					
								angles		linear		mm					
								0°±2'		.00±.25		scale 1:1					
										.000±.010							
				dr		Jeffrey.Huang		-				dwg no		sheet2 of 2		size	
				enr		Jeffrey.Huang		-				10114828		A4			
				chr		TIM YAO		-				type		Product Customer Drawing			
				appd		TIM YAO		-									
sheet index		revision sheet		L		1~2											

单击下面可查看定价，库存，交付和生命周期等信息

[>>Amphenol\(安费诺\)](#)