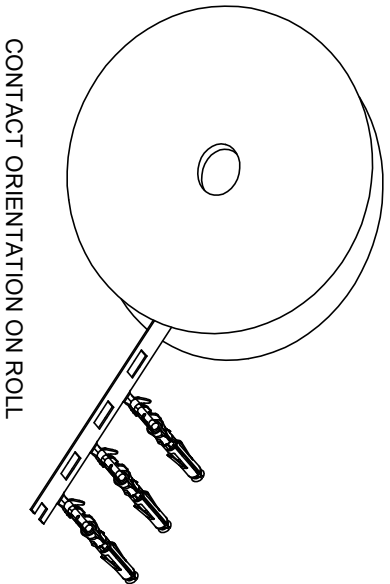


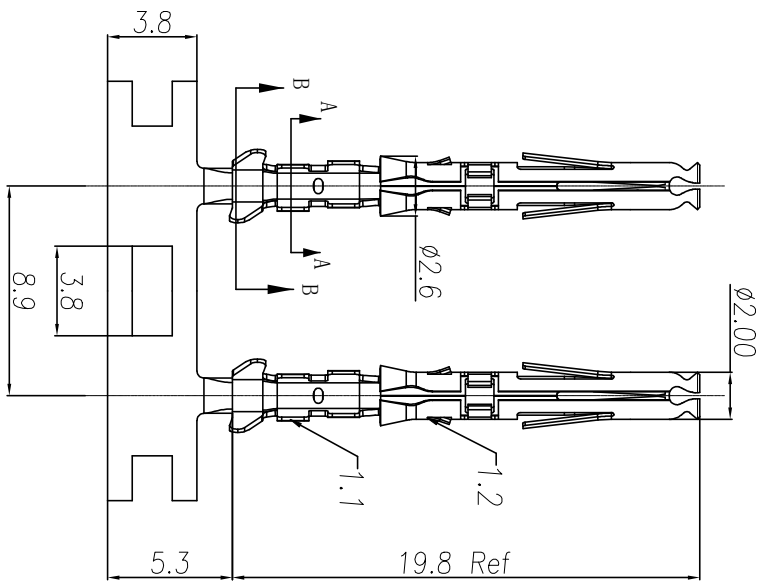
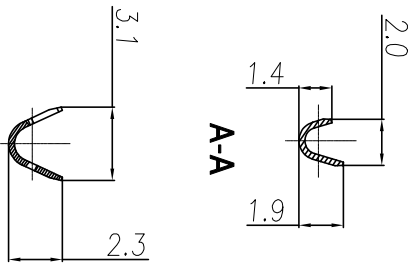
REVISIONS				
REV	ECO	DESCRIPTION	DATE	BY APPR
B1	-	RELEASED DRAWING	JAN-18-2014	ARROW TOMMY
B2	-	CHANGE HAND CRIMPER	Nov-8-19	Flan Tommy



NOTES: (UNLESS OTHERWISE SPECIFIED)

- MATERIAL:
 - CONTACT BODY: COPPER ALLOY.
 - OUTER SPRING: STAINLESS STEEL.
- SPECIFICATIONS:
 - CURRENT RATING: 5A MAX.
 - TERMINATION TYPE: CRIMPING.
 - WIRE RANGE: 24-26AWG.
 - WIRE INSULATION DIA(MAX): $\varnothing 2.2\text{mm}$.
- RoHS COMPLIANT.
- ALL DIMENSIONS ARE FOR REFERENCE USE ONLY.
- AVAILABLE TOOLS:
 - HAND CRIMPER: MFX-3958. (B2)
 - CRIMP APPLICATOR: MFX-3957.
 - EXTRACTION TOOL: QXRT20.

P/N	CONTACT PLATING(MATING AREA)
SS24W1T	TIN PLATING OVER NICKEL.
SS24W1F	GOLD FLASH PLATING OVER NICKEL.
SS24W1G10	10 μ " GOLD PLATING OVER NICKEL.
SS24W1G15	15 μ " GOLD PLATING OVER NICKEL.
SS24W1G30	30 μ " GOLD PLATING OVER NICKEL.



QUANTITY	PART NUMBER	DESCRIPTION	ITEM

MATERIALS LIST			
UNLESS OTHERWISE SPECIFIED	DRAWN: Ril	DATE: Nov-8-19	Amphenol Sine Systems - www.amphenol-sine.com 44724 Montley Drive Clinton Township, MI 48038
1) All dimensions are in millimeters.	CHECKED: Mah	DATE: Nov-8-19	
2) Tolerances are as follows: 1 Pt. DEC 40-90 3 Pt. DEC 20-08	ENGINEER: Tommy	DATE: Nov-8-19	
3) Note reference = Δ	APPROVE: Tommy	DATE: Nov-8-19	

PROCESS SPECIFICATIONS		MATERIAL SPECIFICATIONS	
NEXT ASBY			

单击下面可查看定价，库存，交付和生命周期等信息

[>>Amphenol\(安费诺\)](#)