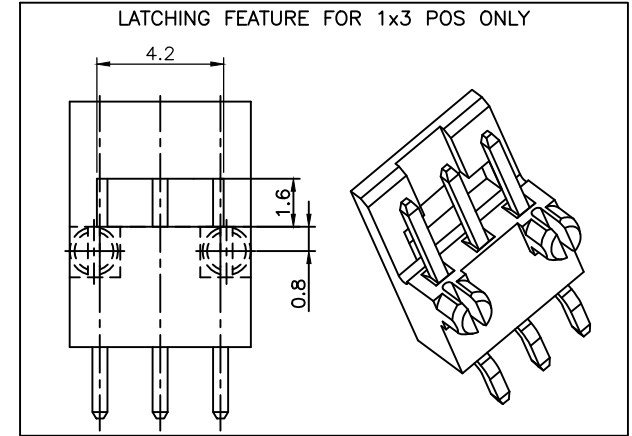
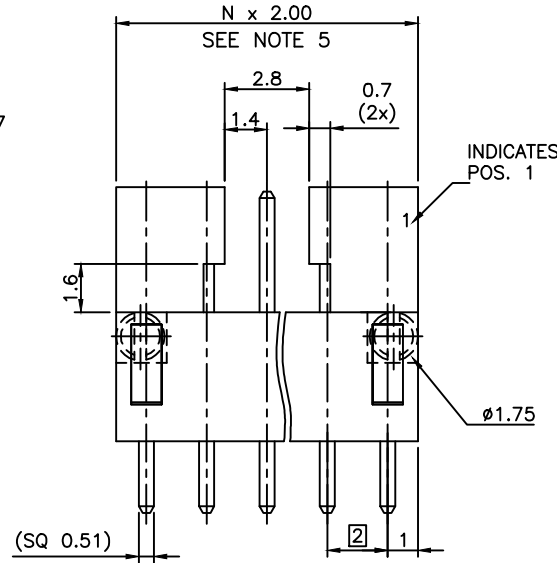


PRODUCT NUMBER
95000-XXXXLF

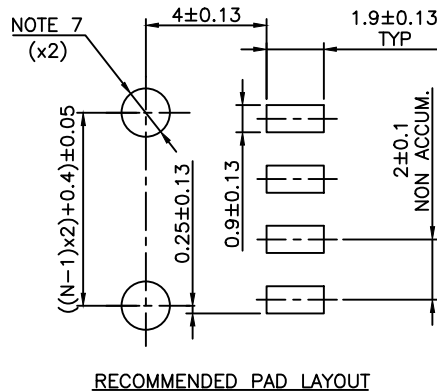
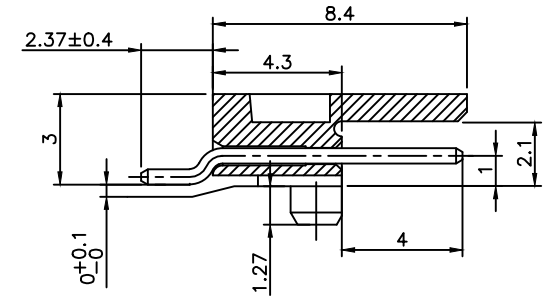
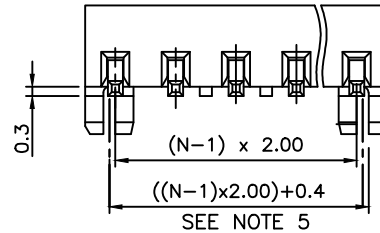
PLATING ————
 ———— RoHS COMPATIBLE, SEE NOTE 6
 ———— PACKAGING TYPE, NOTE 3
 ———— TOTAL NB OF POSITIONS, 3 TO 17

- 0 = 0.20µm GOLD/GXT ON CONTACT AREA
2.0µm MIN MATTE TIN ON TAILS
- 1 = 0.76µm GOLD/GXT ON CONTACT AREA
2.0µm MIN MATTE TIN ON TAILS
- 3 = 0.38µm GOLD/GXT ON CONTACT AREA
2.0µm MIN MATTE TIN ON TAILS
- T = FULL MATTE TIN 2µm-5µm
1.27µm Ni MIN UNDERPLATING



NOTES:

- 1 - HOUSING MAT'L : HIGH TEMPERATURE THERMOPLASTIC. UL94V-0 COLOR: CREAM
- 2 - PIN MATERIAL : COPPER ALLOY
- 3 - PACKAGING :
= POLY BAGS
T = TUBE, FROM 04 POS UP TO 17 POS
TR = TAPE & REEL AS AVAILABLE.
- 4 - 7N MIN RETENTION IN EITHER DIRECTION
- 5 - TO DETERMINE DIMENSIONS :
N = NUMBER OF POSITIONS
- 6 - RoHS COMPATIBLE PRODUCT SPECIFICATIONS
 - a - MANUFACTURING PROCESS COMPATIBILITY
 - THE HOUSING WILL WITHSTAND EXPOSURE TO 260°C PEAK TEMPERATURE FOR 30 SECONDES MAX IN A CONVECTION, INFRA-RED OR VAPOR PHASE OR REFLOW OVEN.
 - b - LABELLING:
 - MEETS PACKAGING SPECS AS PER GS-14-920
 - c - THIS PRODUCT MEETS EUROPEAN DIRECTIVES AND OTHER COUNTRY REGULATIONS AS DISCRIBED IN GS-47-0004
- 7 - HOLE DIMENSION TO BE $\phi 1.60 \pm 0.07$ FOR INTERFERENCE FIT APPLICATIONS, SEE SHEET 2.
HOLE DIMENSION TO BE $\phi 1.95 \pm 0.07$ FOR NON INTERFERENCE FIT (LOCATIONAL) APPLICATIONS

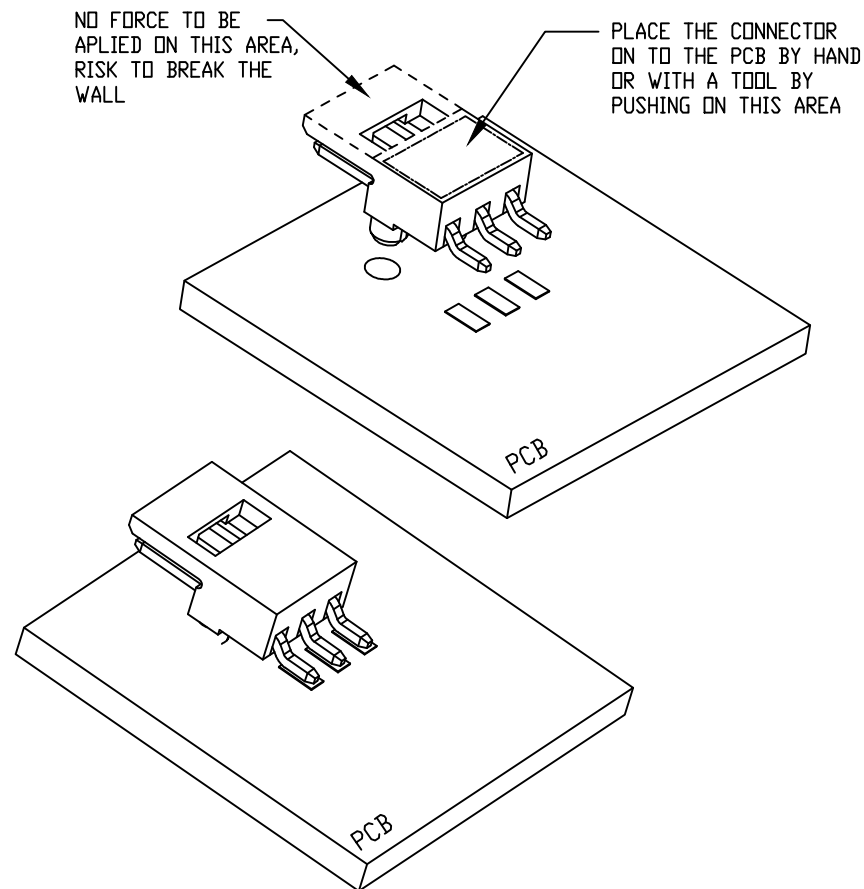
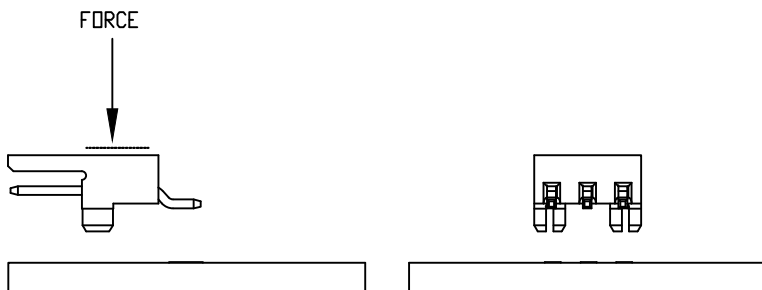
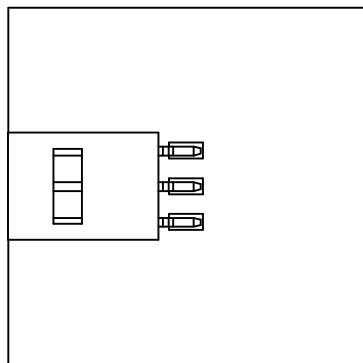


mat'l. code		surface		tolerance		projection		product family			
		ISO 1302 ✓		ISO 406 ISO 1101		mm		MINITEK			
ltr		ecn no dr date		tolerances unless otherwise specified		mm		title			
S	B-19986	JCO	15.01.13	angles	.x ±0.3	mm		MINITEK SMT HDR SR			
T	B-19995	JCO	15.01.15	linear	.xx ±0.13	mm		POLARIZATION & LATCHING			
U	F-23052	AMA	16.01.15	±2	xxx ±0.05	scale 7:1		dwg no sheet 1of2 size			
		dr	J. FABRE	13.01.07					95000 A3		
		enr	J. FABRE	13.01.07							
		chr	JL CORDIER	13.01.07							
		appd	JMC	13.01.07							
sheet	revision	U	A								
index	sheet	1	2								



Copyright FCI

RECOMMENDATION TO PLACE THE CONNECTOR ONTO THE PCB



Copyright FCI

mat'l. code		surface		tolerance		projection		product family		
N/A		ISO 1302 ✓		ISO 406 ISO 1101				MINITEK		
ltr ecn no dr date		tolerances unless otherwise specified				mm		title		
A	B-19986	J.FA	15.01.13	angles	linear			MINITEK SMT HDR SR		
				0°±x'	.00±.0x	scale 1:1		POLARIZATION & LATCHING		
				dr	J.FABRE	15.01.07			dwg no	
				enrg	L.MULIN	15.01.07			sheet of 2	
				chr	J.COMPAGNON	15.01.12			95000	
				appd	JCO	15.01.13			type Product Customer Drawing	
sheet index	revision sheet									

单击下面可查看定价，库存，交付和生命周期等信息

[>>Amphenol\(安费诺\)](#)