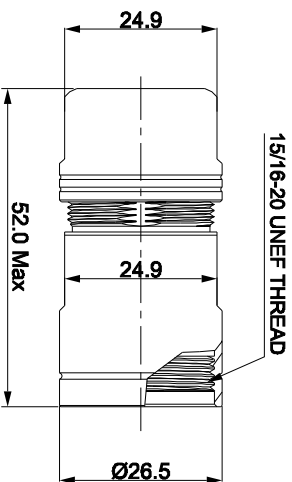
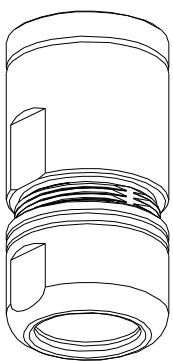
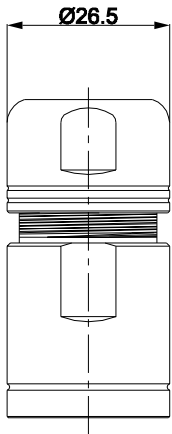
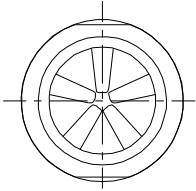


REVISIONS				
REV	ECO	DESCRIPTION	DATE	BY APPR
B1	-	RELEASED DRAWING	JAN-18-2014	ARROW TOMMY



P/N	SHIELDING RING	CABLE RANGE
RT05-16CG-C1	WITHOUT	Ø9.0-Ø14.5mm
RT05-16CG-C2	WITHOUT	Ø13.5-Ø17mm
RT05-16CG-S1	WITH	Ø9.0-Ø14.5mm
RT05-16CG-S2	WITH	Ø13.5-Ø17mm

- NOTES : (UNLESS OTHERWISE SPECIFIED)
1. MATERIAL :
- 1.1. NUT : ZINC ALLOY, NICKEL PLATED.
- 1.2. CLAMP INSERT : THERMOPLASTIC UL94 V-0.
- 1.3. EMI SHIELDING RING : STAINLESS STEEL.
- 1.4. BACK SHELL : ZINC ALLOY, NICKEL PLATED.
- 1.5. O-RING : SILICONE RUBBER.
- 1.6. GROMMET : RUBBER.
2. ROHS COMPLIANT.
3. ALL DIMENSIONS ARE FOR REFERENCE USE ONLY.

QUANTITY	PART NUMBER	DESCRIPTION	ITER
<b>MATERIALS LIST</b>			

UNLESS OTHERWISE SPECIFIED	SIGNATURES	DATE	
1) ALL DIMENSIONS ARE IN MILLIMETERS.	DRAWN: ARROW	JAN-17-2014	
2) Tolerances are as follows:	CHECKED:		
1 Ft. DEC 20 08	ENGINEER:		
2 Ft. DEC 20 08	APPROVAL:		
3) Note reference =	CUSTOMER:		
MATERIAL SPECIFICATIONS:	THIS DRAWING IS SUPPLIED FOR SPECIFICATIONS AND PERFORMANCE DATA. THE MANUFACTURER ASSUMES ALL RESPONSIBILITIES FOR THE PRODUCTION OF REPRODUCTION AND ALL RIGHTS OF REPRODUCTION ARE RESERVED. ALL MANUFACTURING VARIATION.		
PROCESS SPECIFICATIONS:	ECO-MATE BACK SHELL, CORD GRIP, SIZE 16		
NEXT ASST:	SCALE: NONE	SIZE: B	TYPE: C-
			DWG NO: RT05-16CG-XX
			REVISION: B1
			SHEET 1 OF 1

**Amphenol**  
Sine Systems - www.amphenol-sine.com  
44724 Morley Drive  
Clinton Township, MI 48038

ECO-MATE BACK SHELL,  
CORD GRIP, SIZE 16

SIZE: B  
TYPE: C-  
DWG NO: RT05-16CG-XX  
REVISION: B1  
SHEET 1 OF 1

单击下面可查看定价，库存，交付和生命周期等信息

[>>Amphenol\(安费诺\)](#)