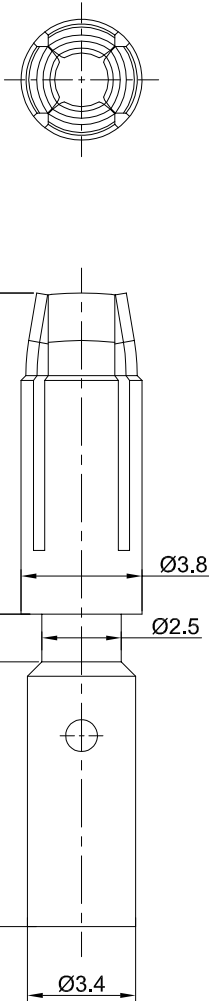
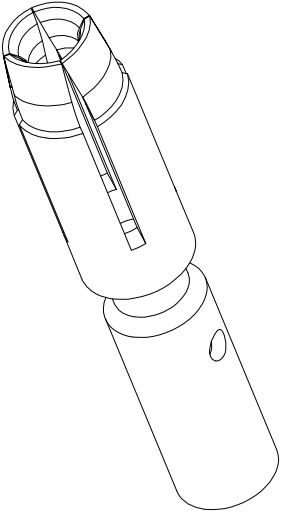


REVISIONS				
REV	ECO	DESCRIPTION	DATE	BY APPR
B1	-	RELEASE NEW DWG FORMAT	May:12,2015	DRACK TOMMY
B2	-	UPDATE THE RATED CURRENT	Mar:30,2016	DRACK TOMMY
B3	-	UPDATE THE CRIMP RANGE	Jul,10,2017	White TOMMY



- NOTES: UNLESS OTHERWISE SPECIFIED
1. MATERIAL: COPPER ALLOY, GOLD PLATED
  2. SPECIFICATIONS:
    - 2.1 RATED CURRENT: 30 AMPS
    - 2.2 CONTACT RESISTANCE: <3 milliohm
    - 2.3 AVAILABLE WIRE RANGE: 14AWG~20AWG
    - 2.4 ROHS COMPLIANT
  3. ALL DIMENSIONS ARE FOR REFERENCE USE ONLY.



QUANTITY	SEE PART NUMBER CHART	PART NUMBER	DESCRIPTION	ITEM
<b>MATERIALS LIST</b>				
UNLESS OTHERWISE SPECIFIED				
1) All dimensions are in millimeters.				
2) Tolerances are as follows:				
1 Pt. DEC 20.30 Fractions .1754				
3 Pt. DEC 20.08 Angles .1°				
3) Note reference =  A				
MATERIAL SPECIFICATIONS:				
CUSTOMER:				
THIS DRAWING IS SUPPLIED FOR INFORMATION ONLY. IT IS NOT TO BE USED FOR SPECIFICATIONS AND PERFORMANCE DATA OF THE PRODUCT. THE USER SHALL BE RESPONSIBLE FOR THE MANUFACTURING VARIATIONS.				
PROCESS SPECIFICATIONS:				
NEXT ASSY:				
<div style="display: flex; justify-content: space-between;"> <div> <p>SCALE: NONE</p> <p>SHEET 1 OF 1</p> </div> <div style="text-align: center;"> <p><b>Amphenol</b></p> <p>Site Systems - www.amphenol-site.com 44724 Moley Drive Clinton Township, MI 48036</p> </div> <div> <p>Socket contact: 2.0mm Crimp 14~20AWG</p> </div> </div>				

TITLE:

Socket contact 14# Crimp 14-18AWG

DWG NO: SC000260

REV: B3

SH: 1

OF: 1

单击下面可查看定价，库存，交付和生命周期等信息

[>>Amphenol\(安费诺\)](#)