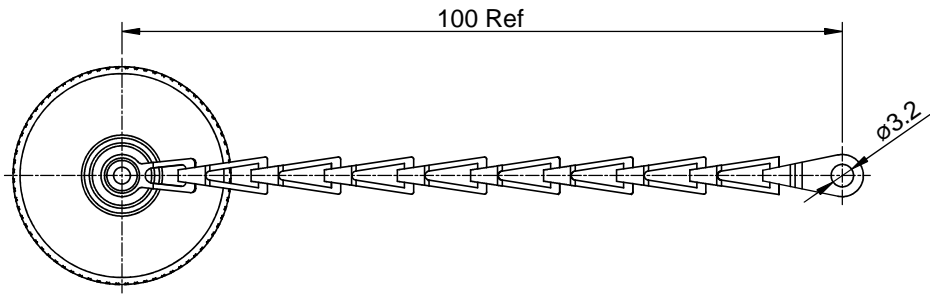
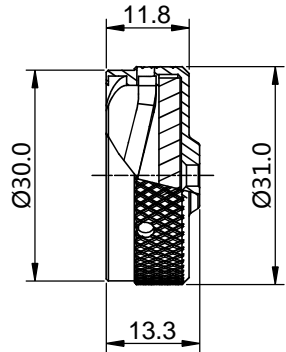


REVISIONS					
REV	ECO	DESCRIPTION	DATE	BY	APPR
B1	-	RELEASED DRAWING	JUN-23-2014	BEN	TOMMY



RT016DC X X  
① ②

P/N	①	②	CHAIN	PLATING
RT016DC	---	---	NO CHAIN	NICKEL PLTING
RT016DCA	---	A	NO CHAIN	BLACK ANODIZING
RT016DCG	G	---	CHAIN	NICKEL PLTING
RT016DCGA	G	A	CHAIN	BLACK ANODIZING

**NOTES : (UNLESS OTHERWISE SPECIFIED)**

- MATERIAL :**  
RIVET : COPPER ALLOY,NICKEL PLATING  
CHAIN : STAINLESS STEEL.  
DUST CAP : AL ALLOY , NICKEL PLATED.  
O-RING : NBR.
- SPECIFICATIONS :**
  - 2.1 OPERATING TEMPERATURE : -40°C ~ +105°C.**
  - 2.2 IP--CLASS : IP67.**
  - 2.3 MATING CYCLES DURABILITY : 500 CYCLES MIN.**
  - 2.4 ROHS COMPLIANT.**
- 3. ALL DIMENSIONS ARE FOR REFERENCE USE ONLY.**

SEE PART NUMBER CHART													
QUANTITY	PART NUMBER	DESCRIPTION	ITEM										
<b>MATERIALS LIST</b>													
<small>UNLESS OTHERWISE SPECIFIED</small> 1) All dimensions are in metric(mm). 2) Tolerances are as follows: 1 PL DEC ±0.30    Fractions ±1/64 2 PL DEC ±0.15    Angles ±1° 3 PL DEC ±0.08 3) Note reference =		<table border="1"> <tr> <th>SIGNATURES</th> <th>DATE</th> </tr> <tr> <td>DRAWN: BEN</td> <td>JUN-23-2014</td> </tr> <tr> <td>CHECKED:</td> <td></td> </tr> <tr> <td>ENGINEER:</td> <td></td> </tr> <tr> <td>APPROVAL:</td> <td></td> </tr> </table>		SIGNATURES	DATE	DRAWN: BEN	JUN-23-2014	CHECKED:		ENGINEER:		APPROVAL:	
SIGNATURES	DATE												
DRAWN: BEN	JUN-23-2014												
CHECKED:													
ENGINEER:													
APPROVAL:													
<small>MATERIAL SPECIFICATIONS:</small> CUSTOMER:		 Sine Systems - www.amphenol-sine.com 44724 Morley Drive Clinton Township, MI 48036											
<small>PROCESS SPECIFICATIONS:</small> THIS DRAWING IS SUPPLIED FOR INFORMATION ONLY. DESIGN FEATURES, SPECIFICATIONS AND PERFORMANCE DATA SHOWN HEREON ARE THE PROPERTY OF THE AMPHENOL CORPORATION. NO RIGHTS OF REPRODUCTION ARE IMPLIED. ALL DIMENSIONS ARE SUBJECT TO NORMAL MANUFACTURING VARIATIONS.		SIZE: B C- SCALE: NONE	DWG NO: RT016DCxx REVISION: B1										
NEXT ASSY:		SHEET 1 OF 1											

TITLE: ECO-MATE,DUSTCAP FOR RECEPTACLES,SIZE 16  
DWG NO: RT016DCXX  
REV: B1  
SH: 1  
OF: 1

单击下面可查看定价，库存，交付和生命周期等信息

[>>Amphenol\(安费诺\)](#)