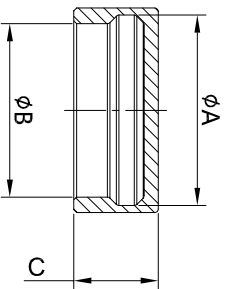
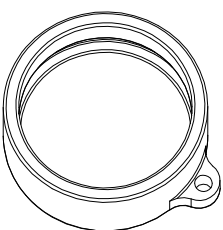
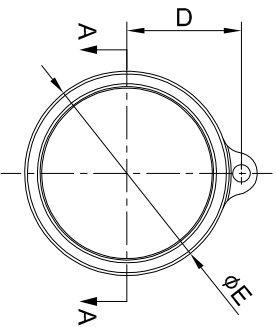


REVISIONS					
REV	ECO	DESCRIPTION	DATE	BY	APPR
B1	-	RELEASED DRAWING	Oct-20-2014	Ben	Tommy
B2	-	Modify Notes	Sep-6-2016	Ben	Tommy



SECTION A-A



- NOTES : (UNLESS OTHERWISE SPECIFIED)
- MATERIAL :
DUST CAP : SILICONE RUBBER.
 - SPECIFICATIONS :
2.1 OPERATING TEMPERATURE : -40°C ~ +125°C.
2.2 MATING CYCLES DURABILITY : 500 CYCLES MIN.
2.3 PROTECTION: IP54.
2.4 RoHS COMPLIANT.
 - ALL DIMENSIONS ARE FOR REFERENCE USE ONLY.

PART NO:	SHELL	A	B	C	D	E
RB000119-10	10	16.2	14.3	12.0	10.85	18.2
RB000119-12	12	20.8	18.3	12.0	13.15	22.8
RB000119-14	14	24.0	21.5	12.0	14.75	26.0
RB000119-16	16	27.0	24.6	12.0	16.25	29.0
RB000119-18	18	31.0	27.8	12.0	18.0	33.0
RB000119-20	20	34.1	31.0	12.0	19.7	36.4

QUANTITY	PART NUMBER	DESCRIPTION	ITEM
		MATERIALS LIST	
<p>UNLESS OTHERWISE SPECIFIED</p> <p>1) All dimensions are in millimeter. 2) Tolerances are as follows: 3 PL DEC 20.08 Angles: ±1/64 2 PL DEC 20.15 Angles: ±1"</p> <p>3) Note reference = A</p>			
SIGNATURES		DATE	
DRAWN: Ben	04-20-2014		
CHECKED: Tol	04-20-2014		
ENGINEER:			
APPROVAL: Tommy	04-20-2014		
CUSTOMER:			
<p>THE DRAWING IS SUPPLIED FOR INFORMATION ONLY. DESIGN FEATURES, SPECIFICATIONS AND PERFORMANCE DATA ARE THE PROPERTY OF AMPHENOL. REPRODUCTION OR REPRODUCTION IN WHOLE OR IN PART WITHOUT THE WRITTEN PERMISSION OF AMPHENOL IS PROHIBITED. ALL DIMENSIONS ARE IN MILLIMETERS UNLESS OTHERWISE SPECIFIED.</p>			
SIZE	TYPE	DWG NO.	REVISION
B	C-	RB000119-XX	B2
SCALE	NONE		
SHEET	1	OF	1

Amphenol

Sine Systems - www.amphenol-sine.com
 44724 Morley Drive
 Clinton Township, MI 48036

ECO-MATE RUBBER
 DUST CAP

单击下面可查看定价，库存，交付和生命周期等信息

[>>Amphenol\(安费诺\)](#)