


Gas Discharge Tube
Features

- Size Design 8.3×8.3×6mm
- High Current Handling Capability 20,000A @ 8/20μs
- Low Capacitance and Insertion Loss
- Fast Response and Long Service Life
- Reliable to Protect Electrostatic Surge
- Moisture sensitivity level: Level 1

Application information

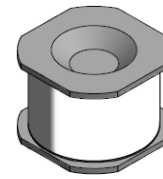
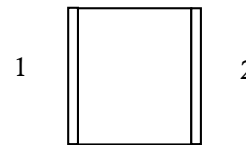
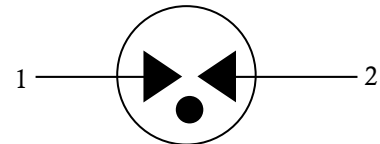
- DC Power Port
- Coaxial Port

Agency Approvals

Icon	Description
RoHS	Compliance with 2011/65/EU
HF	Compliance with IEC61249-2-21:2003
	Mean lead free
UL	Compliance with UL1449, Certificated E337906

Exterior

Version: A0 2018-06-11


SMD
Package (Top View)

Schematic Symbol

Electrical Parameter

DC Breakdown Voltage ^{1) 2)}	100V/s	90±20%	V
Impulse Spark-over Voltage	At 1kV/μs	for 99 % of measured values ≤ 600	V
	At 1kV/μs	Typical values of distribution ≤ 550	V
	At 100V/μs	for 99 % of measured values ≤ 500	V
	At 100V/μs	Typical values of distribution ≤ 450	V
Impulse Discharge Current ³⁾	8/20μs ±5times	20,000	A
	8/20μs 1time	25,000	A
	10/350μs 1time	5,000	A
	10/1000us 300times	100	A
AC Discharge Current	50Hz, 1S, 10times	20	A
	50Hz, 0.18S(9 cycles)	100	A
Arc Voltage	At 1A	~10	V
Insulation Resistance	DC=50V	≥10	GΩ
Co (1MHz)	V _{DC} =0.5V	≤1.5	pF
Weight		~1.75	g
Operating and storage Temperature		-40-125	°C
Marking		Without	

1) At delivery AQL 0.65 level II ISO 2859

2) In ionized mode

3) Terms and current waveforms in accordance with ITU-T Rec. K. 12; IEC 61643-21

**Gas Discharge Tube
Part Numbering System**

BM XXX M -8
(1) (2) (3) (4)

- (1) Bencent SMD Gas Discharge Tube in 8.3×8.3×6 (L×W×H) (mm)
 (2) DC Breakdown Voltage, e.g., 091=9×10¹=90V
 (3) Tolerance is DC Breakdown Voltage, M=±20%, N=±30%
 (4) Special Customer requirement

Product Characteristics

Version: A0 2018-06-11

Lead Material	Copper
Body Material	Ceramics
Terminal Finish	100% Matte-Tin Plated

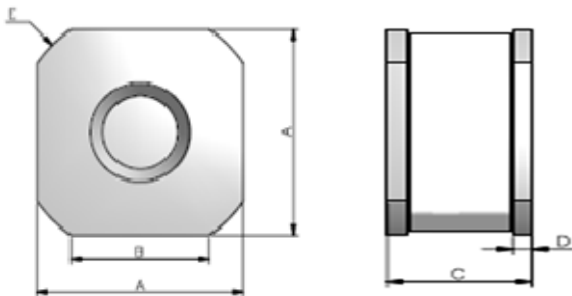
Environmental Reliability Characteristics

Testing items	Technical standards
High Temperature Storage Test	Temperature: 125°C Time: 2H
Low Temperature Storage Test	Temperature: -40°C Time: 2H
Vibration	Frequency: 10-500Hz Amplitude: 0.15mm Time: 45min
Resistance of soldering heat	Temperature: 260±5°C Time of dip soldering: 10s, 1time

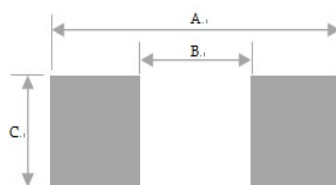
Note: Up-screen program can be specified by customer's request via contacting Bencent service

Solderability test

Solderability	Solder Pot Temperature:	245°C±5°C	Lead-Free Recommendation
	Solder Dwell Time:	4-6 seconds	

Product Dimensions


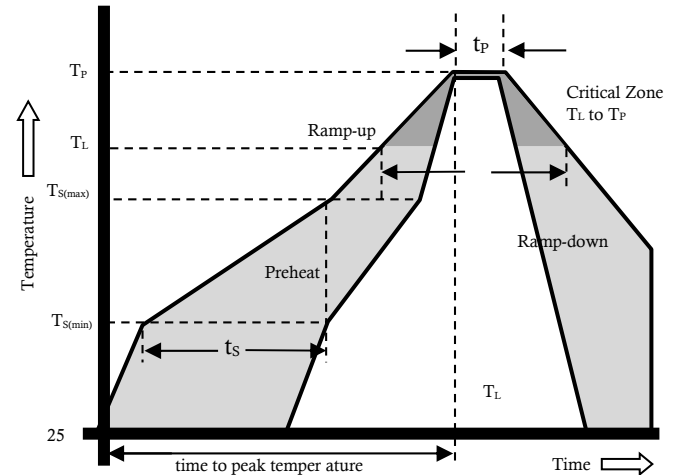
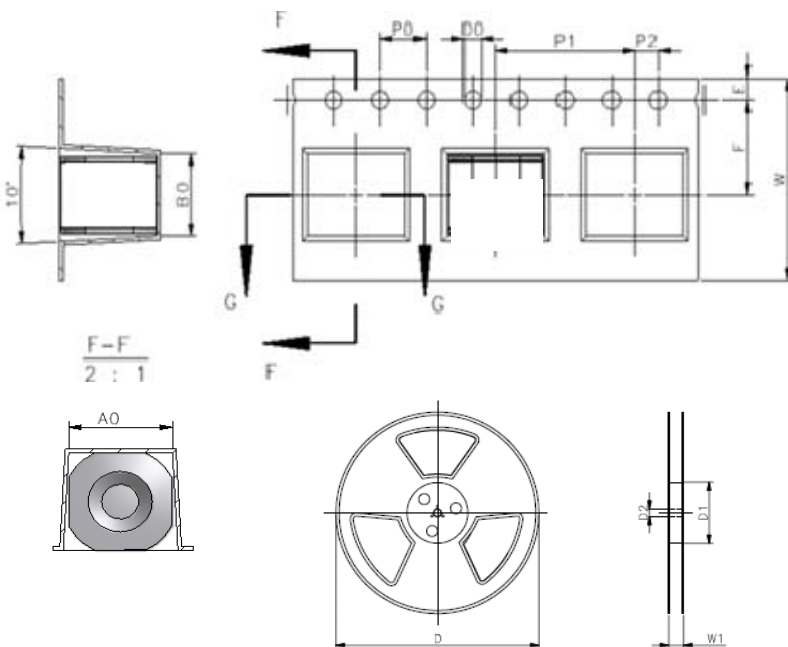
REF	mm	inch
A	8.3±0.2	0.327±0.008
B	5.8±0.1	0.228±0.004
C	6±0.5	0.236±0.020
D	0.5±0.05	0.020±0.002
E	Φ9.3±0.2	Φ0.366±0.008

Recommended soldering pad


REF	mm	inch
A	7.95	0.313
B	4.5	0.177
C	8	0.315

Reflow profile

Reflow Condition		Pb-Free assembly
Pre Heat	Temperature Min	150°C
	Temperature Max	200°C
	Time (min to max)	60 – 180 secs
Average ramp up rate (Liquids) Tamp (T _L) to peak		3°C/second max
T _S (max) to T _L - Ramp-up Rate		3°C/second max
Reflow	- Temperature (T _L) (Liquids)	217°C
	- Temperature (T _L)	60 – 150 seconds
Peak Temperature (T _p)		260±0/-5 °C
Time within 5°C of actual peak Temperature (t _p)		20 – 40 seconds
Ramp-down Rate		6°C/second max
Time 25°C to peak Temperature (T _p)		8 minutes Max.
Do not exceed		260°C


Package Reel Information


REF	mm	inch
P0	4.0±0.1	0.157±0.004
D0	Φ1.5 ^{+0.1} ₋₀	Φ0.059 ^{+0.004} ₋₀
P1	12±0.1	0.472±0.004
P2	2.0±0.1	0.079±0.004
B0	6.5±0.2	0.256±0.008
A0	8.4±0.2	0.331±0.008
F	7.5±0.1	0.295±0.004
E	1.75±0.1	0.069±0.004
W	16±0.3	0.63±0.012
D	Φ330±2	Φ12.99±0.079
D1	Φ100 ⁺¹ ₋₂	Φ3.94 ^{+0.039} _{-0.078}
D2	Φ13±0.15	0.512±0.006
W1	20±1	0.787±0.039

OUTLINE	REEL (PCS)	INSIDE CARTON (PCS)	PER CARTON (PCS)	CARTON SIZE(mm)		
				L	W	H
TAPING	500	1000	8000	360	360	380

单击下面可查看定价，库存，交付和生命周期等信息

[>>Bencent \(槟城\)](#)