

BPCP Series



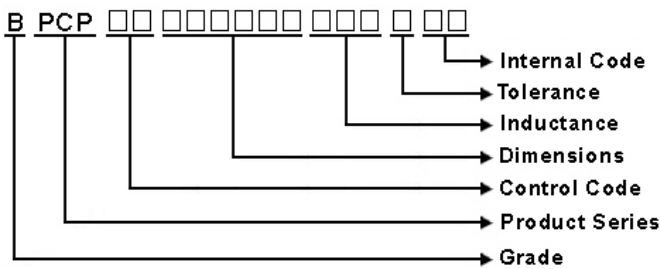
Features

- RoHS compliant
- Low Rdc and high saturation current for portable DC to DC converter line
- High magnetic shielding construction provides high resolution for EMC protection
- Support lead-free soldering

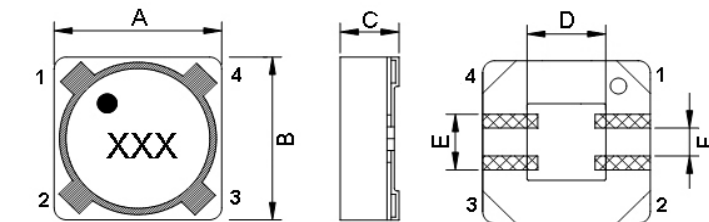
Applications

- Notebook PC
- Set top box
- LCD TV
- LCD displays
- Portable communication device
- DC/DC converters

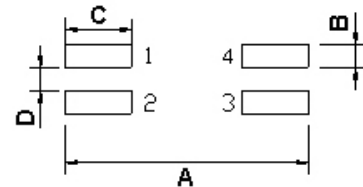
Product Identification



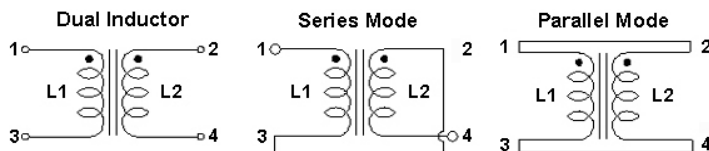
Shape and Dimensions



Recommended Pattern



SCHEMATIC

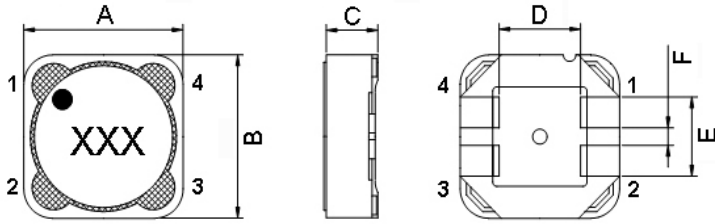


Dimensions in mm

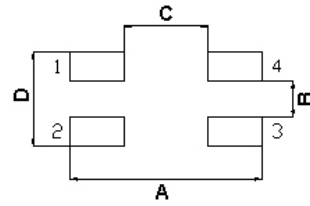
TYPE	Shape and Dimensions						Recommended Pattern			
	A	B	C	D	E	F	A	B	C	D
BPCP00070738	7.6Max	7.6Max	3.8Max	4.05	2.7	1.1	7.9	1.3	2.3	0.6
BPCP00070746	7.6Max	7.6Max	4.5Max	4.05	2.7	1.1	7.9	1.3	2.3	0.6

SMD Shielded Power Inductors – BPCP Series

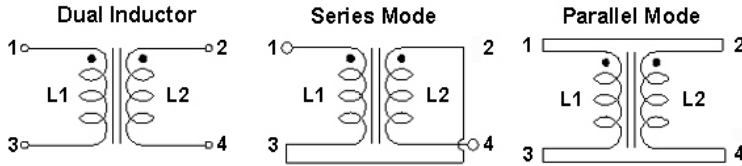
Shape and Dimensions



Recommended Pattern



SCHEMATIC



Dimensions in mm

TYPE	Shape and Dimensions						Recommended Pattern			
	A	B	C	D	E	F	A	B	C	D
BPCP00121281	12.0±0.5	12.0±0.5	8.1Max	5.7	5.0	1.6	13.1	1.1	5.2	5.5

SMD Shielded Power Inductors – BPCP Series

Standard Specifications

Part Number	Inductance L1,2(uH)	Parallel Ratings				Series Ratings				Marking
		OCL (uH)±20%	RDC (Ω)Max	Isat (A)Max	Irms (A)Typ	OCL (uH)±20%	RDC (Ω)Max	Isat (A)Max	Irms (A)Typ	
BPCP000707383R3MA0	3.3	3.3	0.0316	4.22	3.31	13.6	0.182	2.11	1.660	●3R3
BPCP000707384R7MA0	4.7	4.7	0.0406	3.78	3.09	17.1	0.242	1.89	1.550	●4R7
BPCP000707386R8MA0	6.8	6.8	0.0658	3.12	2.55	25.5	0.285	1.56	1.280	●6R8
BPCP000707388R2MA0	8.2	8.2	0.0772	2.66	2.19	34.1	0.306	1.33	1.100	●8R2
BPCP00070738100MA0	10	10	0.0826	2.47	2.08	39.6	0.342	1.24	1.040	●100
BPCP00070738150MA0	15	15	0.1190	2.05	1.83	59.6	0.470	1.03	0.916	●150
BPCP00070738220MA0	22	22	0.1500	1.67	1.62	89.5	0.620	0.83	0.811	●220
BPCP00070738330MA0	33	33	0.2400	1.35	1.31	140.5	1.000	0.68	0.653	●330
BPCP00070738470MA0	47	47	0.3380	1.14	1.08	194.2	1.280	0.57	0.542	●470
BPCP00070738680MA0	68	68	0.5070	0.96	0.89	289.3	1.920	0.48	0.444	●680
BPCP00070738820MA0	82	82	0.6100	0.89	0.86	324.7	2.280	0.44	0.430	●820
BPCP00070738101MA0	100	100	0.7150	0.79	0.73	397.6	2.640	0.39	0.367	●101
BPCP00070738151MA0	150	150	0.9860	0.65	0.58	608.2	3.630	0.32	0.289	●151
BPCP00070738221MA0	220	220	1.4800	0.53	0.52	922.6	5.500	0.27	0.260	●221
BPCP00070738331MA0	330	330	2.1600	0.44	0.42	1335	8.250	0.22	0.211	●331
BPCP00070738471MA0	470	470	2.8200	0.37	0.35	1859	11.220	0.18	0.173	●471

Note: When ordering, please specify tolerance code. Tolerance: M=±20%

- Operating temperature range – 40°C ~ 125°C (Including self - temperature rise)
- Test Frequency : 100kHz, 0.25V
- Dual: L1(1-3), L2(2-4) Parallel: (1,2-3,4) Series: (1-4)tie(2-3)
- Isat for Inductance drop 30% from its value without current
- Irms for a 40°C temperature rise from 25°C ambient with current
- Turns Ratio(1-3):(2-4) 1:1

SMD Shielded Power Inductors – BPCP Series

Standard Specifications

Part Number	Inductance L1,2(uH)	Parallel Ratings				Series Ratings				Marking
		OCL (uH)±20%	RDC (Ω)Typ	Isat (A)Typ	Irms (A)Typ	OCL (uH)±20%	RDC (Ω)Typ	Isat (A)Typ	Irms (A)Typ	
BPCP000707463R3MA0	3.3	3.396	0.0183	5.40	3.94	13.58	0.0732	2.70	1.970	●3R3
BPCP000707464R7MA0	4.7	5.182	0.0254	4.37	3.34	20.73	0.1020	2.19	1.670	●4R7
BPCP000707466R8MA0	6.8	7.344	0.0418	3.67	2.6	29.38	0.1670	1.84	1.300	●6R8
BPCP000707468R2MA0	8.2	8.566	0.0441	3.40	2.53	34.26	0.1770	1.70	1.270	●8R2
BPCP00070746100MA0	10	9.882	0.0489	3.17	2.41	39.53	0.1960	1.58	1.200	●100
BPCP00070746150MA0	15	16.09	0.0637	2.48	2.11	64.36	0.2550	1.24	1.050	●150
BPCP00070746220MA0	22	21.73	0.0925	2.13	1.75	86.92	0.3710	1.07	0.874	●220
BPCP00070746330MA0	33	33.01	0.1430	1.73	1.41	132.0	0.5740	0.87	0.702	●330
BPCP00070746470MA0	47	49.64	0.2160	1.41	1.15	198.6	0.8650	0.71	0.573	●470

Note: When ordering, please specify tolerance code. Tolerance: M=±20%

- Operating temperature range—40°C ~ 125°C (Including self - temperature rise)
- Test Frequency : 100kHz,0.25V
- Dual:L1(1-3) ,L2(2-4) Parallel:(1,2-3,4) Series:(1-4)tie(2-3)
- Isat for Inductance drop 30% from its value without current
- I rms for a 40°C temperature rise from 25°C ambient with current
- Turns Ratio(1-3):(2-4) 1:1

SMD Shielded Power Inductors – BPCP Series

Standard Specifications

Part Number	Inductance L1,2(μH)	Parallel Ratings				Series Ratings				Marking
		OCL (μH)	RDC (Ω)Max	Isat (A)Typ	Irms (A)Typ	OCL (μH)	RDC (Ω)Max	Isat (A)Typ	Irms (A)Typ	
BPCP001212812R2TA0	2.2	2.2±30%	0.0092	25.50	12.50	8.8±30%	0.0338	12.700	6.230	●2R2
BPCP001212813R3TA0	3.3	3.3±30%	0.0110	21.50	10.40	13.2±30%	0.0400	10.800	5.230	●3R3
BPCP001212814R7TA0	4.7	4.7±30%	0.0135	16.50	8.25	18.8±30%	0.0500	8.240	4.130	●4R7
BPCP001212816R8MA0	6.8	6.8±20%	0.0183	13.30	7.34	27.2±20%	0.0656	6.670	3.670	●6R8
BPCP001212818R2MA0	8.2	8.2±20%	0.0191	12.20	6.32	32.8±20%	0.0714	6.090	3.160	●8R2
BPCP00121281100MA0	10	10±20%	0.0241	11.20	6.04	40±20%	0.0921	5.600	3.020	●100
BPCP00121281150MA0	15	15±20%	0.0333	9.66	5.03	60±20%	0.1290	4.830	2.510	●150
BPCP00121281220MA0	22	22±20%	0.0503	7.57	4.00	88±20%	0.1920	3.780	2.000	●220
BPCP00121281330MA0	33	33±20%	0.0664	6.22	3.23	132±20%	0.2650	3.110	1.610	●330
BPCP00121281470MA0	47	47±20%	0.0898	5.28	2.95	188±20%	0.3530	2.640	1.470	●470
BPCP00121281680MA0	68	68±20%	0.1230	4.44	2.44	272±20%	0.4690	2.220	1.220	●680
BPCP00121281820MA0	82	82±20%	0.1530	4.06	2.09	328±20%	0.5780	2.030	1.040	●820
BPCP00121281101MA0	100	100±20%	0.1750	3.64	1.96	400±20%	0.7010	1.820	0.980	●101
BPCP00121281151MA0	150	150±20%	0.2610	3.01	1.59	600±20%	1.0130	1.510	0.796	●151
BPCP00121281221MA0	220	220±20%	0.3430	2.43	1.29	880±20%	1.3800	1.220	0.645	●221
BPCP00121281331MA0	330	330±20%	0.5400	2.01	1.04	1320±20%	2.1720	1.010	0.522	●331
BPCP00121281471MA0	470	470±20%	0.8650	1.68	0.85	1880±20%	3.3000	0.838	0.427	●471
BPCP00121281681MA0	680	680±20%	1.2960	1.39	0.76	2720±20%	4.8880	0.697	0.380	●681
BPCP00121281821MA0	820	820±20%	1.6320	1.27	0.65	3280±20%	5.8960	0.633	0.325	●821
BPCP00121281102MA0	1000	1000±20%	1.9920	1.14	0.61	4000±20%	7.2020	0.571	0.307	●102

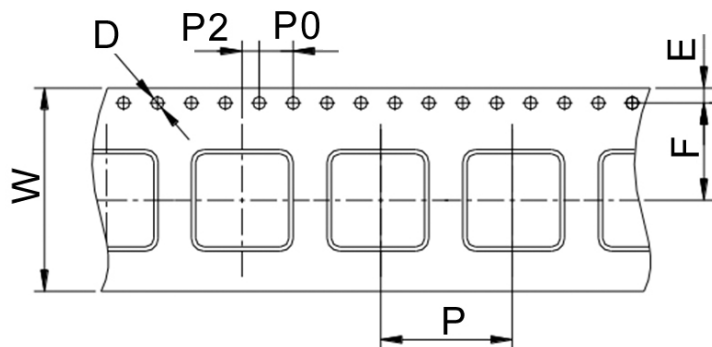
Note: When ordering, please specify tolerance code. Tolerance: M=±20% , T=±30%

- Operating temperature range—40°C ~ 125°C (Including self - temperature rise)
- Test Frequency : 100kHz,0.25V
- Dual:L1(1-3) ,L2(2-4) Parallel:(1,2-3,4) Series:(1-4)tie(2-3)
- Isat for Inductance drop 30% from its value without current
- Irms for a 40°C temperature rise from 25°C ambient with current
- Turns Ratio(1-3):(2-4) 1:1

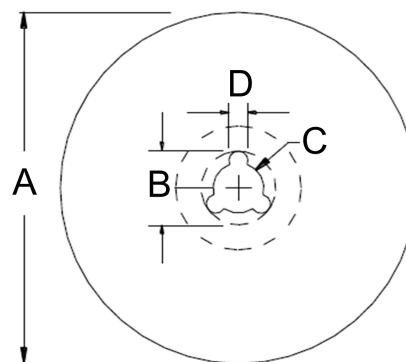
SMD Shielded Power Inductors – BPCP Series

Packaging Specifications

Tape Dimensions



Reel Dimensions



Dimensions in mm

TYPE	Tape Dimensions							Reel Dimensions				Quantity PCS / Reel
	W	D	E	F	P	P0	P2	A	B	C	D	
BPCP00070738	16	1.5	1.75	7.5	12	4	2	330	20	13	2	1000
BPCP00070746	16	1.5	1.75	7.5	12	4	2	330	20	13	2	1000
BPCP00121281	24	1.5	1.75	11.5	16	4	2	330	20	13	2	500

单击下面可查看定价，库存，交付和生命周期等信息

[>>CHILISIN\(奇力新\)](#)