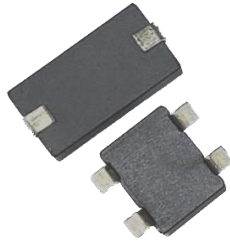


**BPPB Series**



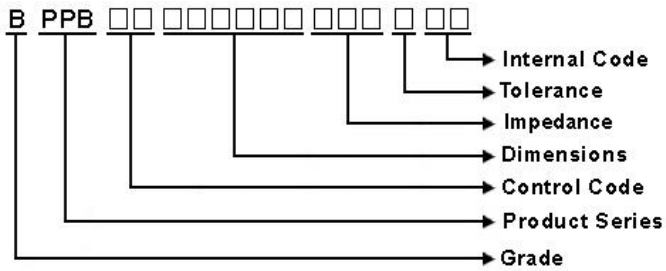
**Features**

- RoHS Compliant
- Special designs for surface mounting
- Available in various sizes for wide range of application and usage
- Highly resistant against heat and humidity

**Applications**

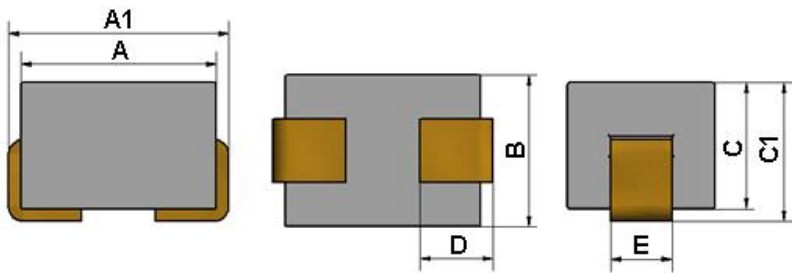
- Stereo
- Car radio
- Mobile telephone
- VCRs
- Computer disk drive and PC board

**Product Identification**

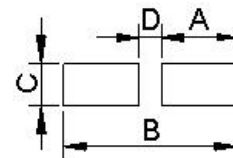


**Shapes and Dimensions**

**BPPB00403025\_AE**



**Recommended Pattern**



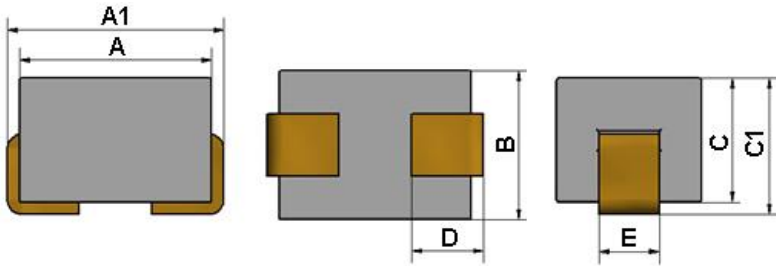
Dimensions in mm

TYPE	Shape and Dimensions							Recommended Pattern			
	A	A1	B	C	C1	D	E	A	B	C	D
BPPB00403025_AE	4.06±0.1	5.08Max	3.05±0.15	2.54±0.15	3.05Max	1.52±0.5	1.27	2.77	6.35	1.47	0.81

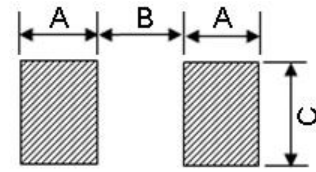
# SMD Shielded Power Inductors – BPPB Series

## Shapes and Dimensions

BPPB00403025



## Recommended Pattern

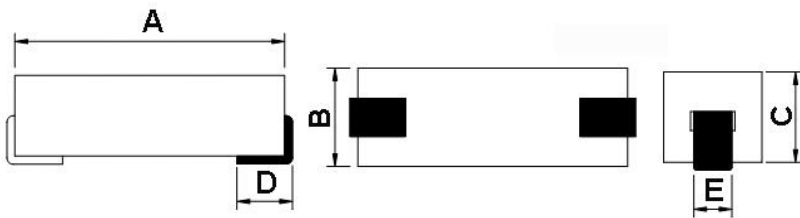


Dimensions in mm

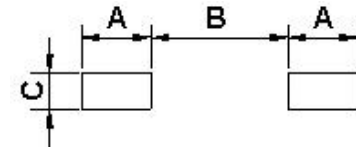
TYPE	Shape and Dimensions							Recommended Pattern		
	A	A1	B	C	C1	D	E	A	B	C
BPPB00403025	4.00±0.2	5.08Max	3.10±0.15	2.54±0.15	3.05Max	1.50±0.5	1.25	1.5	2.0	2.5

## Shapes and Dimensions

BPPB00853025



## Recommended Pattern



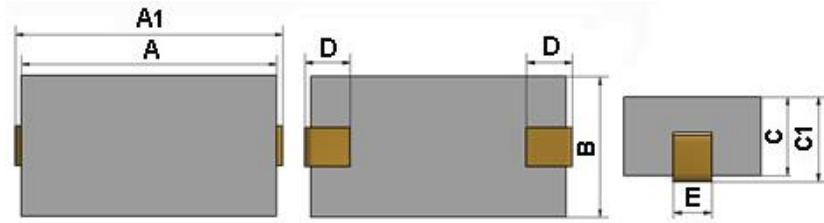
Dimensions in mm

TYPE	Shape and Dimensions					Recommended Pattern		
	A	B	C	D	E	A	B	C
BPPB00853025	8.5±0.3	3.1±0.15	2.54±0.15	1.5	1.35	2.0	5.0	1.5

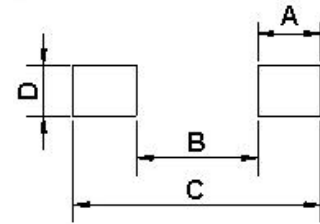
# SMD Shielded Power Inductors – BPPB Series

## Shapes and Dimensions

BPPB00854625



## Recommended Pattern

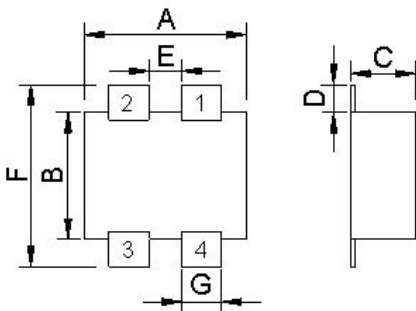


Dimensions in mm

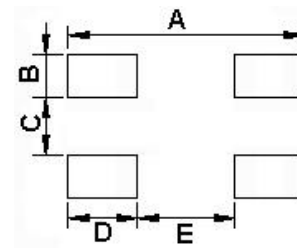
TYPE	Shape and Dimensions							Recommended Pattern			
	A	A1	B	C	C1	D	E	A	B	C	D
BPPB00854625	8.51±0.23	9.53Max	4.6±0.2	2.4±0.25	3.05Max	1.52±0.5	1.27	2.77	5.26	10.8	1.47

## Shapes and Dimensions

BPPB00070628



## Recommended Pattern



Dimensions in mm

TYPE	Shape and Dimensions							Recommended Pattern				
	A	B	C	D	E	F	G	A	B	C	D	E
BPPB00070628	5.7±0.2	4.6±0.3	2.8±0.3	0.9+0.2/-0.1	2.0±0.2	6.7±0.2	1.2±0.2	7.0	1.4	1.8	1.8	3.4

## SMD Shielded Power Inductors – BPPB Series

### Standard Specifications

Part Number	Impedance( $\Omega$ ) @1MHz,0.5V	Impedance( $\Omega$ ) @10MHz,0.5V	RDC (m $\Omega$ )Max.	Rated current (A)Typ
BPPB00403025420XAE	14Min	34Min(42Typ)	0.75	10

**Note: When ordering, please specify tolerance code.**

- Operating temperature range—40°C ~ 125°C (Including self - temperature rise)
- Rated Current : Based on temperature rise ( $\Delta T$ :40°C Typ.)
- Measure Equipment :  
Z : HP 4291B IMPEDANCE ANALYZER (or equivalent)  
RDC : CHROMA MODEL 16502 MILLIOHMETER (or equivalent)

## SMD Shielded Power Inductors – BPPB Series

### Standard Specifications

Part Number	Impedance( $\Omega$ ) @25MHz,0.5V	Impedance( $\Omega$ ) @100MHz,0.5V	RDC (m $\Omega$ )Max.	Rated current (A)Typ
BPPB00403025470X00	30 $\pm$ 25%	47 $\pm$ 25%	0.6	10

**Note: When ordering, please specify tolerance code.**

- Operating temperature range – 40°C ~ 125°C (Including self - temperature rise)
- Rated Current : Based on temperature rise ( $\Delta T$ :40°C Typ.)
- Measure Equipment :  
Z : HP 4291B IMPEDANCE ANALYZER (or equivalent)  
RDC : CHROMA MODEL 16502 MILLIOHMETER (or equivalent)

## SMD Shielded Power Inductors – BPPB Series

### Standard Specifications

Part Number	Impedance( $\Omega$ ) @25MHz,0.5V	Impedance( $\Omega$ ) @100MHz,0.5V	RDC (m $\Omega$ )Max.	Rated current (A)Typ
BPPB00853025100X00	60 $\pm$ 25%	90 $\pm$ 25%	0.9	10

**Note: When ordering, please specify tolerance code.**

- Operating temperature range – 40°C ~ 125°C (Including self - temperature rise)
- Rated Current : Based on temperature rise ( $\Delta T$ :40°C Typ.)
- Measure Equipment :  
Z : HP 4291B IMPEDANCE ANALYZER (or equivalent)  
RDC : CHROMA MODEL 16502 MILLIOHMETER (or equivalent)

## SMD Shielded Power Inductors – BPPB Series

### Standard Specifications

Part Number	Impedance( $\Omega$ ) @10MHz,0.5V	RDC (m $\Omega$ )Max.	Rated current (A)Typ
BPPB00854625121X0E	115 $\pm$ 25%	1.0	10

**Note: When ordering, please specify tolerance code.**

- Operating temperature range – 40°C ~ 125°C (Including self - temperature rise)
- Rated Current : Based on temperature rise ( $\Delta T$ :40°C Typ.)
- Measure Equipment :  
Z : HP 4291B IMPEDANCE ANALYZER (or equivalent)  
RDC : CHROMA MODEL 16502 MILLIOHMETER (or equivalent)

## SMD Shielded Power Inductors – BPPB Series

### Standard Specifications

Part Number	Impedance( $\Omega$ ) @100MHz,0.5V	RDC (m $\Omega$ )Max.	Rated current (A)Typ
BPPB00070628330Y2E	33 $\pm$ 25%	3.0	10

**Note: When ordering, please specify tolerance code.**

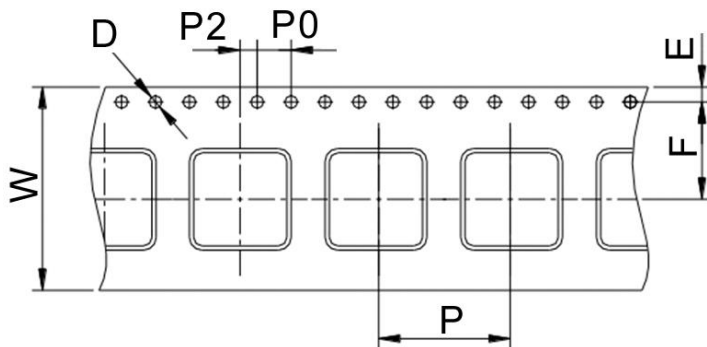
- Operating temperature range – 40°C ~ 125°C (Including self - temperature rise)
- Rated Current : Based on temperature rise ( $\Delta T$ :40°C Typ.)
- Measure Equipment :  
Z : HP 4291B IMPEDANCE ANALYZER (or equivalent)  
RDC : CHROMA MODEL 16502 MILLIOHMETER (or equivalent)



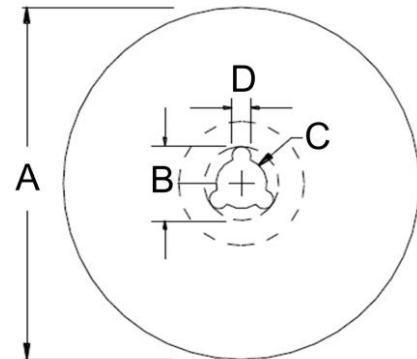
# SMD Shielded Power Inductors – BPPB Series

## Packaging Specifications

Tape Dimensions



Reel Dimensions



Dimensions in mm

TYPE	Tape Dimensions							Reel Dimensions				Quantity PCS / Reel
	W	D	E	F	P	P0	P2	A	B	C	D	
BPPB00403025	12	1.5	1.75	5.5	8	4	2	178	20	13	2	500
BPPB00853025	16	1.5	1.75	7.5	8	4	2	178	20	13	2	500
BPPB00854625	16	1.5	1.75	7.5	8	4	2	178	20	13	2	500
BPPB00070628	16	1.5	1.75	7.5	12	4	2	330	20	13	2	1500

单击下面可查看定价，库存，交付和生命周期等信息

[>>CHILISIN\(奇力新\)](#)