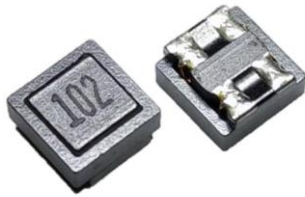


## BPPI Series



A full series of common mode choke is designed for excellent noise attenuation with compact sizing for use in wide range of applications. Both standard series and custom designs are available.

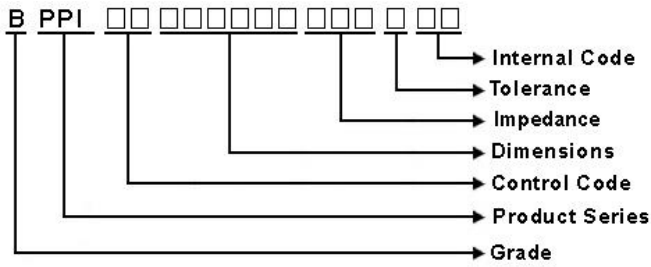
### Features

- RoHS Compliant
- Miniature SMD type common mode filter for fully automated assembly
- Excellent solderability

### Applications

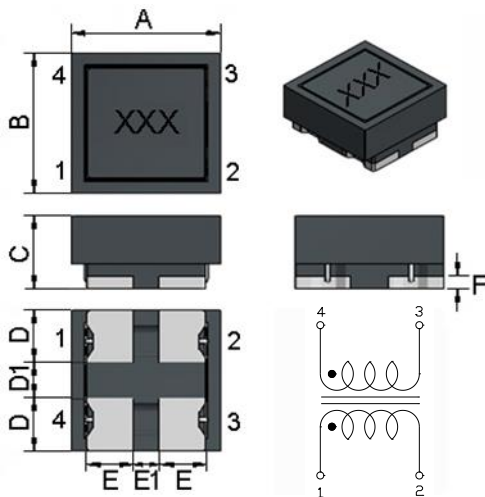
- USB line for personal computers and peripheral
- IEEE 1394 line for personal computers, DVC, STB
- LVDS, panel line for liquid display panels, graph card, etc.

### Product Identification

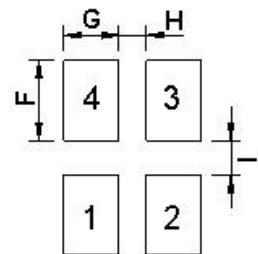


### Shape and Dimensions

BPPI00050525



### Recommended Pattern



Dimensions in mm

TYPE	Shape and Dimensions									Recommended Pattern			
	A	B	C	D	D1	E	E1	F	F	G	H	I	
BPPI00050525	4.8±0.2	5.0±0.2	2.5Max	1.9	1.2	1.35	0.8	0.45	2.3	1.6	0.8	1.0	
BPPI00050545	4.8±0.2	5.0±0.2	4.5Max	1.9	1.0	1.35	0.8	0.45	2.3	1.6	0.8	1.0	

## SMD Common Mode Filter – BPPI Series

### Standard Specifications

Part Number	Impedance ( $\Omega$ )Min. @10MHz,0.5V	Impedance ( $\Omega$ )Typ. @100MHz,0.5V	RDC (m $\Omega$ )	Irms (A)Max	Rated Voltage (V)Max	Withstanding voltage (V)Max.	Insulation Resistance (M $\Omega$ )Min.	Marking
BPPI00050525101X00	10	100	9 $\pm$ 40%	6.0	50	125	10	101
BPPI00050525251X00	20	250	14 $\pm$ 40%	5.0	50	125	10	251
BPPI00050525501X00	30	500	19Max.	4.0	50	125	10	501
BPPI00050525102X00	60	1000	24 $\pm$ 40%	2.0	50	125	10	102
BPPI00050525142X00	100	1400	40 $\pm$ 40%	1.5	50	125	10	142
BPPI00050525152X00	–	1500	40 $\pm$ 40%	1.5	50	125	10	152

**Note: When ordering, please specify tolerance code.**

- Operating temperature range –40 $^{\circ}$ C ~ 125 $^{\circ}$ C (Including self - temperature rise)
- I rms:Based on temperature rise ( $\Delta$ T:40 $^{\circ}$ C TYP)
- Measure Equipment :

Z : HP 4291B IMPEDANCE ANALYZER (or equivalent)

RDC : CHROMA MODEL 16502 MILLIOHMMETER (or equivalent)

Insulation Resistance : CHROMA MODEL 19073 AC/DC/IR HIPOT TESTER (or equivalent)

## SMD Common Mode Filter – BPPI Series

### Standard Specifications

Part Number	Impedance ( $\Omega$ )Typ. @100MHz,0.5V	Inductance ( $\mu$ H)Typ. @100KHz,0.1V	RDC ( $\Omega$ )Max	I <sub>rms</sub> (A)Max	Rated Voltage (V)Max	Withstanding voltage (V)Max.	Insulation Resistance (M $\Omega$ )Min.	Marking
BPPI00050545191X00	190	0.6	0.02	5.0	50	125	10	191
BPPI00050545351X00	350	1.1	0.04	2.0	50	125	10	351
BPPI00050545102X00	1000	2.7	0.06	1.5	50	125	10	102
BPPI00050545152X00	1500	3.6	0.10	1.0	50	125	10	152
BPPI00050545302X00	3000	6.0	0.20	0.5	50	125	10	302

**Note: When ordering, please specify tolerance code.**

- Operating temperature range—40°C ~ 125°C (Including self - temperature rise)
- I<sub>rms</sub>:Based on temperature rise ( $\Delta$ T:40°C TYP)
- Measure Equipment :

Z : HP 4291B IMPEDANCE ANALYZER (or equivalent)

L : HP4284A.

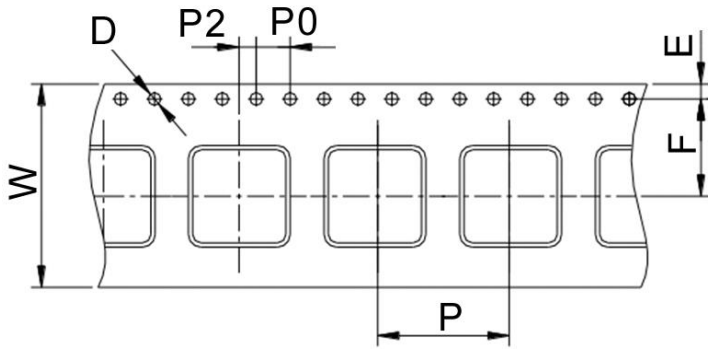
RDC : CHROMA MODEL 16502 MILLIOHMMETER (or equivalent)

Insulation Resistance : CHROMA MODEL 19073 AC/DC/IR HIPOT TESTER (or equivalent)

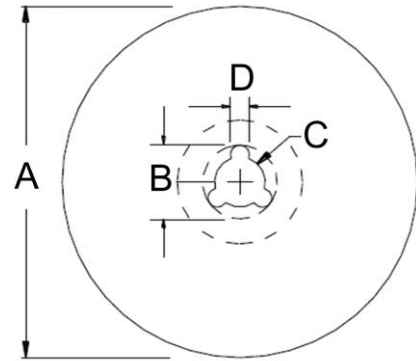
# SMD Common Mode Filter – BPPI Series

## Packaging Specifications

Tape Dimensions



Reel Dimensions



Dimensions in mm

TYPE	Tape Dimensions							Reel Dimensions				Quantity PCS / Reel
	W	D	E	F	P	P0	P2	A	B	C	D	
BPPI00050525	12	1.5	1.75	5.5	8	4	2	330	20	13	2	2500
BPPI00050545	16	1.5	1.75	7.5	12	4	2	330	20	13	2	1000

单击下面可查看定价，库存，交付和生命周期等信息

[>>CHILISIN\(奇力新\)](#)