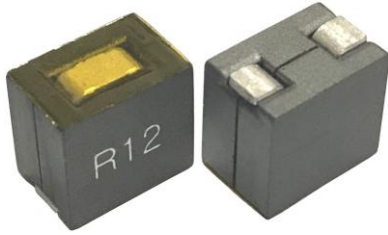


BPMV Series



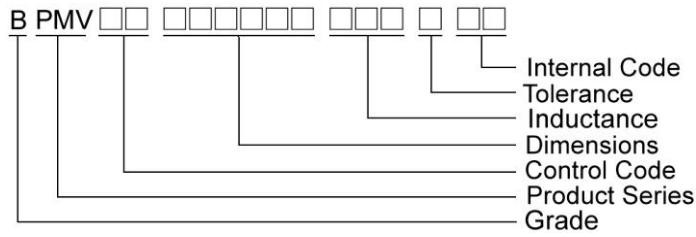
Features

- RoHS, Halogen Free and REACH Compliance
- Surface mount inductors designed for high speed, high current switch mode applications requiring lower inductance
- Gapped ferrite cores for maximum efficiency
Customized specifications are available

Applications

- Voltage regulator modules (VRMs) for servers, microprocessors
- High frequency, high current switching power supplies

Product Identification

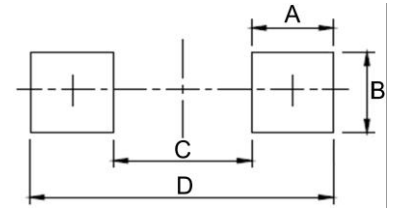
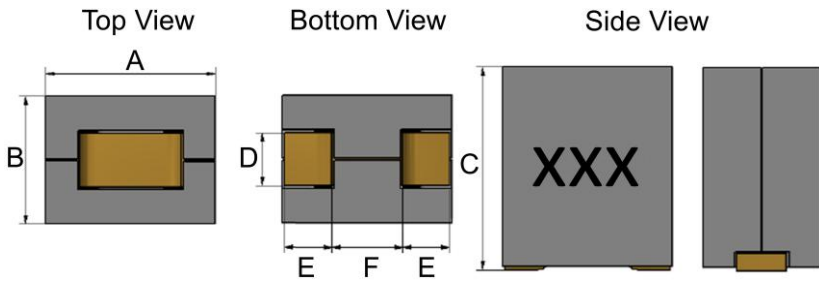


SMD Shielded Power Inductors – BPMV Series

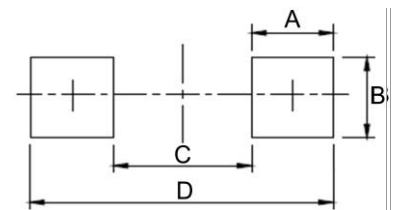
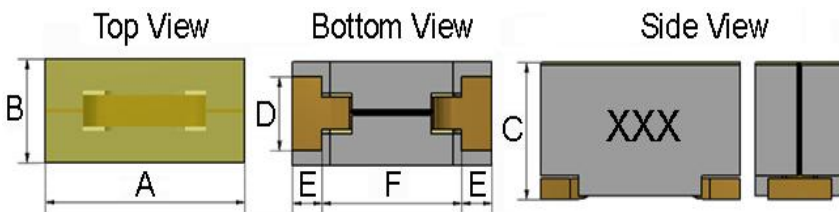
Shape and Dimensions

Recommended Pattern

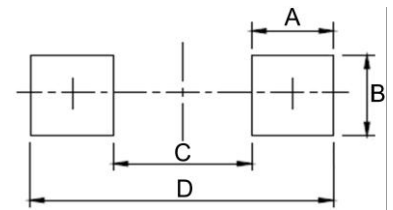
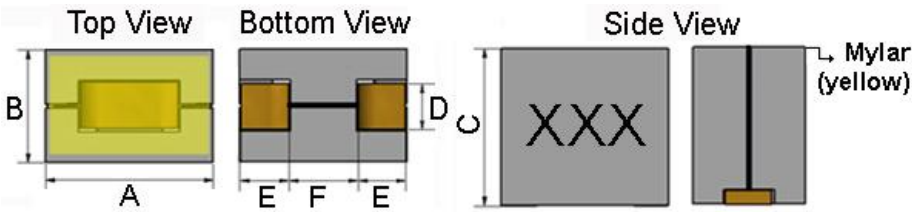
BPMV00080812



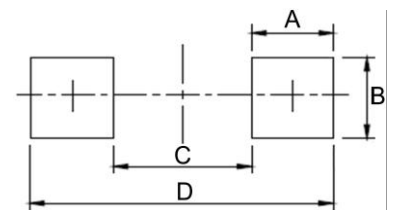
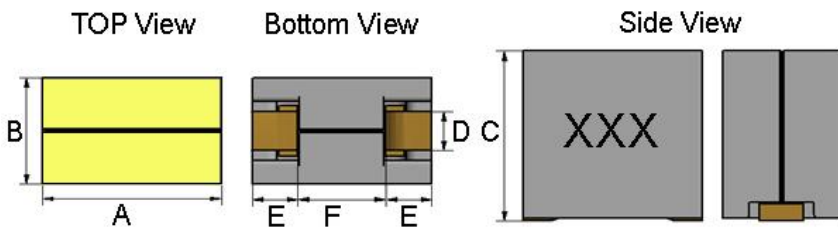
BPMV00100460



BPMV00100690

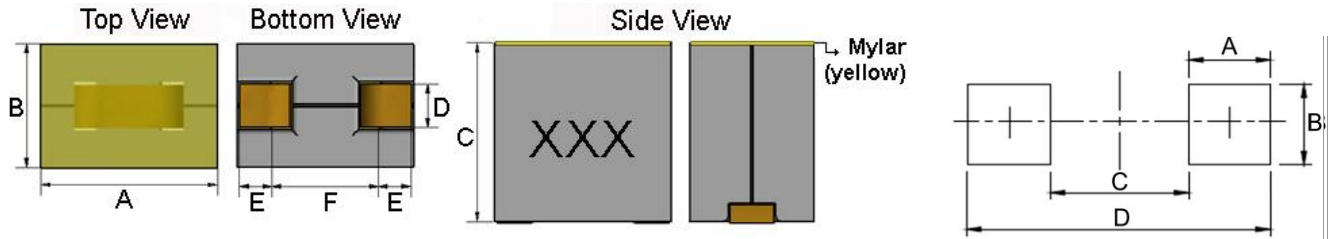


BPMV00100612

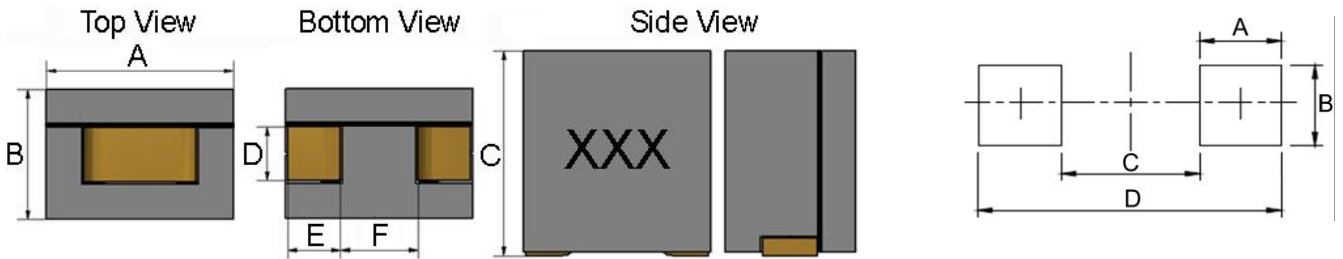


SMD Shielded Power Inductors – BPMV Series

BPMV00100710/110812-0E



BPMV00110810



Dimensions in mm

TYPE	Shape and Dimensions						Recommended Pattern			
	A	B	C	D	E	F	A	B	C	D
BPMV00080812	7.6Max	8.1Max	12Max	4.4±0.1	2	3.1	2.5	4.9	2.6	7.6
BPMV00100612	10Max	6Max	12Max	2.4	2.25	5.0	3.2	3.3	3.9	10.3
BPMV00100460	10 ±0.2	0.12uH 4.6 ±0.2 0.22uH 4.4 ±0.3	6.0Max	3.2	1.5	7.0	2.5	3.7	5.3	10.3
BPMV00100690	9.6Max	6.4Max 0.09uH 6.45Max	9.0Max	2.6	2.5	4.0	3.2	3.1	3.5	9.9
BPMV00100710	10Max	7.0Max	10Max	2.4±0.2	2.4	4.2	3.3	3.0	4.4	11.0
BPMV00110810	10.7Max	7.5Max	9.5Max	2.8	2.8	4.6	3.8	4.1	3.3	10.9
BPMV00110812	10.7Max	7.5Max	12Max	3.1	2.8	4.4	3.6	3.6	3.7	10.9

SMD Shielded Power Inductors – BPMV Series

Standard Specifications

Part Number	Inductance (uH)	Tolerance (±%)	Test Frequency (kHz)	RDC (mΩ)±10%	(A)Typ		Irms (A)Typ	Marking
					Isat 1	Isat 2		
BPMV00080812R12□0E	0.12	10,15,20	100	0.155	95	79	60	R12
BPMV00080812R15□0E	0.15	10,15,20	100	0.155	86	73	60	R15
BPMV00080812R17□0E	0.17	10,15,20	100	0.155	75	64	60	R17
BPMV00080812R22□0E	0.22	10,15,20	100	0.155	57	48	60	R22
BPMV00080812R32□0E	0.32	10,15,20	100	0.155	37	31	60	R32

Note: When ordering, please specify tolerance code. Tolerance: K=±10% , L=±15% , M=±20%

- Operating temperature range – 40°C ~ 125°C (Including self - temperature rise)
- Isat 1 : Based on inductance change ($\Delta L/Lo$: drop 20% Typ) @ ambient temp. 25°C
- Isat 2 : Based on inductance change ($\Delta L/Lo$: drop 20% Typ) @ ambient temp. 100°C
- I rms for a 40°C temperature rise from 25°C ambient with current
- Rated DC Current : The less value which is Isat 1 or I rms

SMD Shielded Power Inductors – BPMV Series

Standard Specifications

Part Number	Inductance (uH)	Tolerance (±%)	Test Frequency (kHz)	RDC (mΩ)±10%	Isat (A)Typ	Irms (A)Typ	Marking
BPMV00100460R12□0H	0.12	10,15,20	100	0.23	55	70	R12
BPMV00100460R22□0F	0.22	10,15,20	100	0.23	22	70	R22

Note: When ordering, please specify tolerance code. Tolerance: K=±10% , L=±15% , M=±20%

- Operating temperature range – 40°C ~ 125°C (Including self - temperature rise)
- Isat : Based on inductance change ($\Delta L/L_0$: drop 20% Typ) @ ambient temp. 25°C
- Irms for a 40°C temperature rise from 25°C ambient with current
- Rated DC Current : The less value which is Isat or Irms

SMD Shielded Power Inductors – BPMV Series

Standard Specifications

Part Number	Inductance (uH)	Tolerance (±%)	Test Frequency (kHz)	RDC (mΩ)±10%	Isat 1	Isat 2	Isat 3	Isat 4	Irms (A)Typ	Marking
BPMV00100612R10□0E	0.1	10,15,20	100	0.125	125	105	96	88	77	R10
BPMV00100612R12□0E	0.12	10,15,20	100	0.125	105	93	88	81	77	R12
BPMV00100612R12□0H	0.12	10,15,20	500	0.125	105	93	88	81	77	R12
BPMV00100612R15□0E	0.15	10,15,20	100	0.125	83	75	78	65	77	R15
BPMV00100612R15□0H	0.15	10,15,20	500	0.125	83	75	78	65	77	R15
BPMV00100612R33□0E	0.33	10,15,20	100	0.125	40	33	28	26	77	R33

Note: When ordering, please specify tolerance code. Tolerance: K=±10% , L=±15% , M=±20%

- Operating temperature range – 40°C ~ 125°C (Including self - temperature rise)
- Isat 1 : Based on inductance change ($\Delta L/Lo$: drop 20% Typ) @ ambient temp. 25°C
- Isat 2 : Based on inductance change ($\Delta L/Lo$: drop 20% Typ) @ ambient temp. 75°C
- Isat 3 : Based on inductance change ($\Delta L/Lo$: drop 20% Typ) @ ambient temp. 100°C
- Isat 4 : Based on inductance change ($\Delta L/Lo$: drop 20% Typ) @ ambient temp. 125°C
- I rms for a 40°C temperature rise from 25°C ambient with current
- Rated DC Current : The less value which is Isat 1 or I rms

SMD Shielded Power Inductors – BPMV Series

Standard Specifications

Part Number	Inductance (uH)	Tolerance (±%)	Test Frequency (kHz)	RDC (mΩ)±5%	(A)Typ		I _{rms} (A)Typ	Marking
					Isat 1	Isat 2		
BPMV0010069090N□0E	0.09	10,15,20	100	0.17	125	104	66	90N
BPMV00100690R12□0E	0.12	10,15,20	100	0.17	94	75	66	R12
BPMV00100690R15□0E	0.15	10,15,20	100	0.17	75	55	66	R15
BPMV00100690R21□0E	0.21	10,15,20	100	0.17	50	37.5	66	R21
BPMV00100690R30□0E	0.30	10,15,20	100	0.17	33	29	66	R30

Note: When ordering, please specify tolerance code. Tolerance: K=±10% , L=±15% , M=±20%

- Operating temperature range – 40°C ~ 125°C (Including self - temperature rise)
- Isat 1 : Based on inductance change ($\Delta L/Lo$: drop 20% Typ) @ ambient temp. 25°C
- Isat 2 : Based on inductance change ($\Delta L/Lo$: drop 20% Typ) @ ambient temp. 125°C
- I_{rms} for a 40°C temperature rise from 25°C ambient with current
- Rated DC Current : The less value which is Isat 1 or I_{rms}

SMD Shielded Power Inductors – BPMV Series

Standard Specifications

Part Number	Inductance (uH)	Inductance @ Isat 1 (uH)Typ	Tolerance (±%)	Test Frequency (kHz)	RDC (mΩ)±10%	(A)Typ			Irms (A)Typ	Marking
						Isat 1	Isat 2	Isat 3		
BPMV00100710R10□0E	0.10	0.09	15	100	0.185	113	86	81	68	R10
BPMV00100710R12□0E	0.12	0.12	15	100	0.185	90	80	75	68	R12
BPMV00100710R15□0E	0.15	0.15	15	100	0.185	80	75	73	68	R15
BPMV00100710R33□0E	0.33	0.31	15	100	0.185	43	33	31	68	R33

Note: When ordering, please specify tolerance code. Tolerance: L=±15%

- Operating temperature range – 40°C ~ 125°C (Including self - temperature rise)
- Isat 1 : Based on inductance change ($\Delta L/L_0$: drop 20% Typ) @ ambient temp. 25°C
- Isat 2 : Based on inductance change ($\Delta L/L_0$: drop 20% Typ) @ ambient temp. 100°C
- Isat 3 : Based on inductance change ($\Delta L/L_0$: drop 20% Typ) @ ambient temp. 125°C
- Irms for a 40°C temperature rise from 25°C ambient with current
- Rated DC Current : The less value which is Isat 1 or Irms

SMD Shielded Power Inductors – BPMV Series

Standard Specifications

Part Number	Inductance (uH)	Tolerance (±%)	Test Frequency (kHz)	RDC (mΩ)±5%	(A)Typ		Irms (A)Typ	Marking
					Isat 1	Isat 2		
BPMV00110810R12□00	0.12	10,15,20	100	0.23	105	87	61	R12
BPMV00110810R15□00	0.15	10,15,20	100	0.23	90	70	61	R15
BPMV00110810R20□00	0.20	10,15,20	100	0.23	70	58	61	R20
BPMV00110810R22□00	0.22	10,15,20	100	0.23	64	51	61	R22
BPMV00110810R25□00	0.25	10,15,20	100	0.23	56	45	61	R25
BPMV00110810R27□00	0.27	10,15,20	100	0.23	55	44	61	R27
BPMV00110810R30□00	0.30	10,15,20	100	0.23	47	37	61	R30
BPMV00110810R32□00	0.32	10,15,20	100	0.23	42	36	61	R32
BPMV00110810R36□00	0.36	10,15,20	100	0.23	38	34	61	R36
BPMV00110810R40□00	0.40	15,20	100	0.23	36	29	61	R40
BPMV00110810R47□00	0.47	20	100	0.23	28	25	61	R47

Note: When ordering, please specify tolerance code. Tolerance: K=±10% , L=±15% , M=±20%

- Operating temperature range – 40°C ~ 125°C (Including self - temperature rise)
- Isat 1 : Based on inductance change ($\Delta L/L_0$: drop 20% Typ) @ ambient temp. 25°C
- Isat 2 : Based on inductance change ($\Delta L/L_0$: drop 20% Typ) @ ambient temp. 100°C
- I rms for a 40°C temperature rise from 25°C ambient with current
- Rated DC Current : The less value which is Isat 1 or I rms

SMD Shielded Power Inductors – BPMV Series

Standard Specifications

Part Number	Inductance (μ H)	Tolerance (\pm %)	Test Frequency (kHz)	RDC ($m\Omega$) \pm 5%	(A)Typ		I _{rms} (A)Typ	Marking
					Isat 1	Isat 2		
BPMV00110812R15 \square 0E	0.15	10,15,20	100	0.15	115	97	75	R15
BPMV00110812R18 \square 0E	0.18	10,15,20	100	0.15	85	72	75	R18
BPMV00110812R22 \square 0E	0.22	10,15,20	100	0.15	75	64	75	R22
BPMV00110812R25 \square 0E	0.25	10,15,20	100	0.15	66	56	75	R25
BPMV00110812R27 \square 0E	0.27	10,15,20	100	0.15	60	51	75	R27
BPMV00110812R30 \square 0E	0.30	10,15,20	100	0.15	55	45	75	R30
BPMV00110812R32 \square 0E	0.32	10,15,20	100	0.15	51	43	75	R32

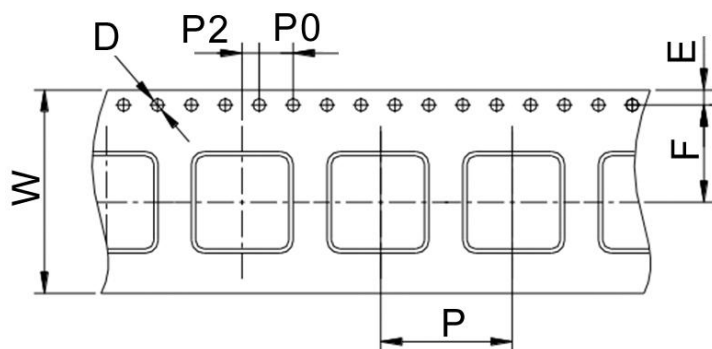
Note: When ordering, please specify tolerance code. Tolerance: K= \pm 10% , L= \pm 15% , M= \pm 20%

- Operating temperature range –40°C ~125°C (Including self - temperature rise)
- Isat 1 : Based on inductance change (Δ L/Lo : drop 20% Typ) @ ambient temp. 25°C
- Isat 2 : Based on inductance change (Δ L/Lo : drop 20% Typ) @ ambient temp. 100°C
- I_{rms} for a 40°C temperature rise from 25°C ambient with current
- Rated DC Current : The less value which is Isat 1 or I_{rms}

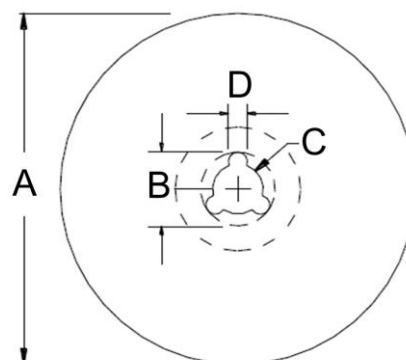
SMD Shielded Power Inductors – BPMV Series

Packaging Specifications

Tape Dimensions



Reel Dimensions



Dimensions in mm

TYPE	Tape Dimensions							Reel Dimensions				Quantity PCS / Reel
	W	D	E	F	P	P0	P2	A	B	C	D	
BPMV00080812	24	1.5	1.75	11.5	16	4	2	330	20	13	2	300
BPMV00100460	24	1.5	1.75	11.5	12	4	2	330	20	13	2	750
BPMV00100612	24	1.5	1.75	11.5	16	4	2	330	20	13	2	300
BPMV00100690	24	1.5	1.75	11.5	12	4	2	330	20	13	2	500
BPMV00100710	24	1.5	1.75	11.5	16	4	2	330	20	13	2	350
BPMV00110810	24	1.5	1.75	11.5	16	4	2	330	20	13	2	350
BPMV00110812	24	1.5	1.75	11.5	16	4	2	330	20	13	2	300

单击下面可查看定价，库存，交付和生命周期等信息

[>>CHILISIN\(奇力新\)](#)