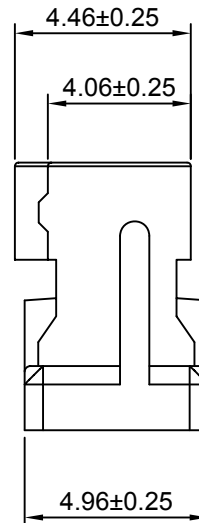
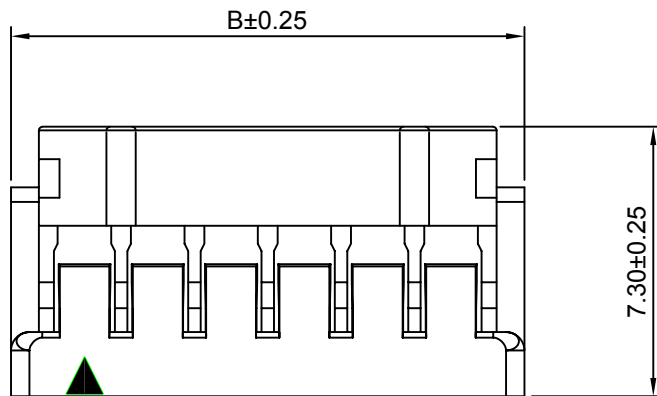


SPECIFICATIONS:

Current Rating: 2A AC,DC
 Voltage Rating: 250V AC,DC
 Temperature Range: -40°C ~ +105°C
 Contact Resistance: 30mΩ Max.
 Insulation Resistance: 1000MΩ Min.
 Withstanding Voltage: 800V AC/minute
 Material: Nylon 66,UL94V-0(Black)

Ordering Information & Dimensions



Circuits	Dimensions(mm)		Circuits	Dimensions(mm)	
	A	B		A	B
2x2P	2.00	6.00	2x12P	22.00	26.00
2x3P	4.00	8.00	2x13P	24.00	28.00
2x4P	6.00	4.00	2x14P	26.00	30.00
2x5P	8.00	12.00	2x15P	28.00	32.00
2x6P	10.00	14.00	2x16P	30.00	34.00
2x7P	12.00	16.00	2x17P	32.00	36.00
2x8P	14.00	18.00	2x18P	34.00	38.00
2x9P	16.00	20.00	2x19P	36.00	40.00
2x10P	18.00	22.00	2x20P	38.00	42.00
2x11P	20.00	24.00			



CHANGJIANG CONNECTORS CO.,LTD.

Unit	Scale	Sheet
mm	5:1	1 of 1
Draw BY:	Approved :	
LIZQ	GONGYB	

Title :
2.00mm PITCH
DUAL ROW HOUSING

REV	DESCRIPTION	DATE	General Tolerance	ANGLE±
A1	Change the size	2012.02.10	x.xx≤0.25	
A0	NEW RELEEASE	2005.05.10	x.xx≤0.20	
			x.xxx≤0.15	

DRAW NO : **A2009H-2xXP** REV **A1**

单击下面可查看定价，库存，交付和生命周期等信息

[>>CJTconn](#)