

CMI-CMMPP10040LL-SERIES



Features

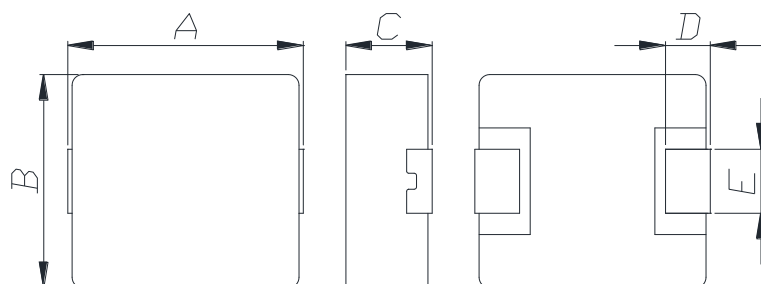
- ▶ High current and low profile.
- ▶ Metal powder molding type for EMC protection.
- ▶ Available tape and reel for auto insertion.
- ▶ RoHS compliant
- ▶ AEC-Q200 qualified.
- ▶ Halogen-Free

Applications

- ▶ Equipment using for automobiles (ECM, airbags, headlights, electronic Powder steering, motors, ABS, other)

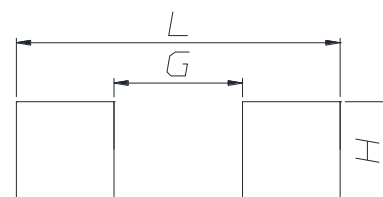


Dimension (Unit:mm)



A	B	C	D	E
10.85±0.5	10.0±0.4	4.0 Max	2.0±0.3	3.0±0.2

Land Pattern (Unit:mm)



L	G	H
13.6	5.4	4.1

Specifications

Part Number	Inductance (uH) ±20%	DCR(mohm) Max(Typ)	Isat(A) Max(Typ)	Itemp(A) Max(Typ)	Test Frequency (Hz)
CMI-CMMPP10040LL-R78M	0.78	1.9(1.8)	28.00(32.00)	19.00(21.00)	1M
CMI-CMMPP10040LL-1R0M	1.0	3.2(2.6)	25.00(28.00)	14.20(15.80)	1M
CMI-CMMPP10040LL-2R2M	2.2	9.6(8.0)	22.00(24.00)	14.00(15.00)	1M
CMI-CMMPP10040LL-4R7M	4.7	15.0(12.5)	16.00(17.00)	12.00(13.00)	1M
CMI-CMMPP10040LL-6R8M	6.8	19.2(16.0)	13.50(14.50)	9.00(9.50)	1M
CMI-CMMPP10040LL-100M	10	31.2(26.0)	9.50(10.50)	7.00(7.50)	1M
CMI-CMMPP10040LL-150M	15	48.0(40.0)	9.00(10.00)	6.00(6.50)	1M
CMI-CMMPP10040LL-220M	22	57.6(48.0)	7.50(8.00)	5.80(6.20)	1M
CMI-CMMPP10040LL-330M	33	108.0(90.0)	4.80(5.30)	4.80(5.30)	1M
CMI-CMMPP10040LL-470M	47	156.0(130.0)	4.50(4.80)	3.50(3.70)	1M

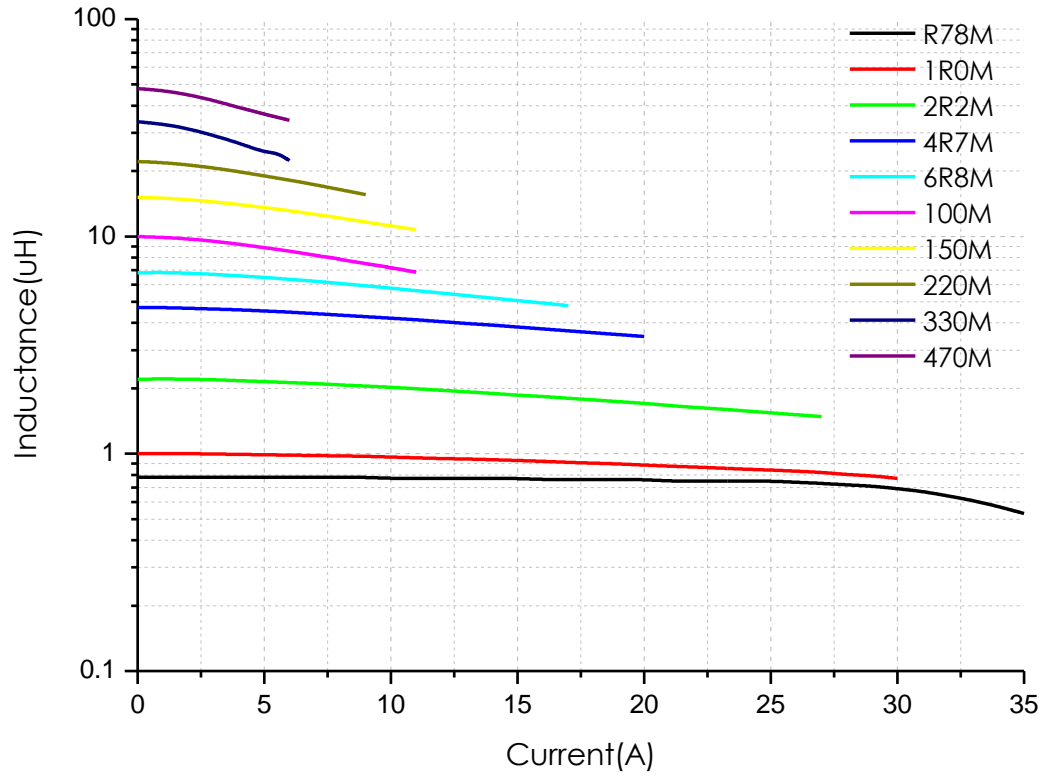
- Isat: When based on the inductance change rate (approximately 30% below in the initial value)
- Itemp: When based on the temperature increase (Temperature increase of approximately 40°C by self heating)
- Operating Temperature Range(including self temperature) : -40°C ~ +165 °C

Note 1 : Circuit design, component placement, PCB trace size and thickness, airflow and other cooling. Provision all affect the part Temperature. Part temperature should be verified in the end application.

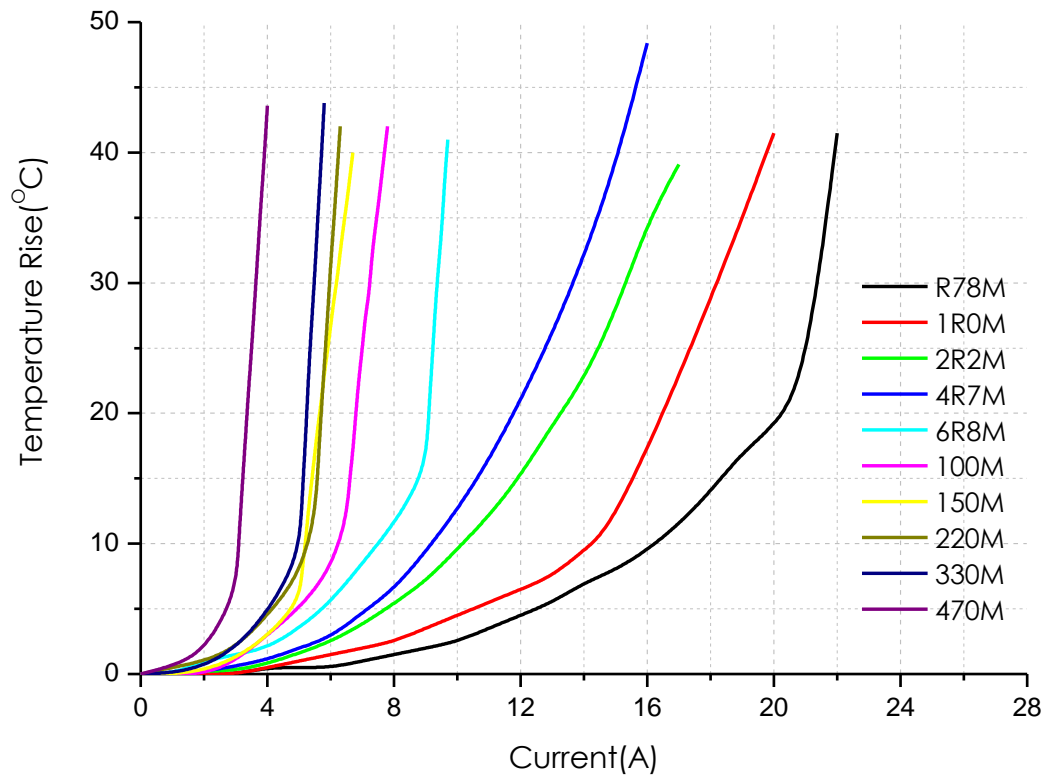
- All specifications are subject to change without notice.
- Update date : 2019.02.07

www.coilmaster.com

DC BIAS vs INDUCTANCE



DC BIAS vs TEMPERATURE

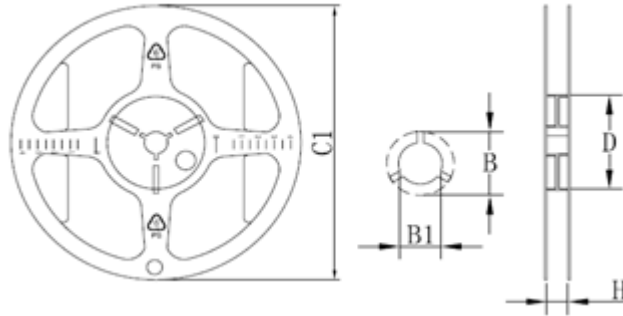


- All specifications are subject to change without notice.
- Update date : 2019.02.07

Packaging

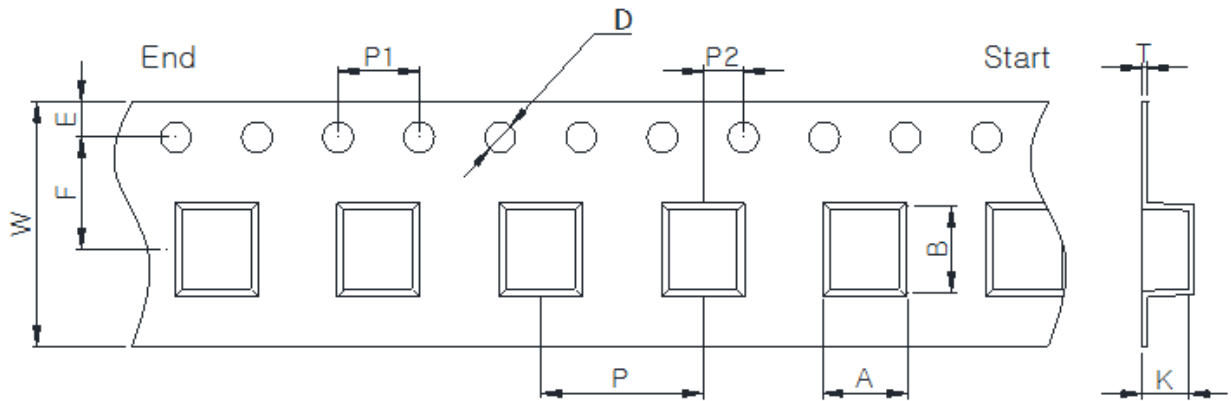
(1) Package quantity : 800 (pcs/reel)

(2) Reel Dimensions (unit:mm)



C1	B	B1	D	H
$\Phi 330 \pm 3.0$	$\Phi 21.5 \pm 0.3$	$\Phi 13.0 \pm 0.4$	$\Phi 100 \pm 1.0$	24.5 ± 0.5

(3) Tape Dimensions



W	A	B	K	E	F	P	P1	P2	D	T
24.00	10.50	11.40	4.30	1.75	11.50	16.00	4.00	2.00	1.50	0.40
+0.30	+0.10	+0.10	+0.10	+0.10	+0.10	+0.10	+0.10	+0.10	+0.10	+0.05
-0.30	-0.10	-0.10	-0.10	-0.10	-0.10	-0.10	-0.10	-0.10	-0.00	-0.05

Ilisan Sales Office (KOREA) +82)31-904-1444
 Shenzhen Sales Office (CHINA) +86)755-8663-6929
 Hungary Sales office (EUROPE) +36)30-913-7706

H.K Sales Office (HONGKONG) +852)2711-5551
 LA Sales Office (USA) +1)866-446-3586

- All specifications are subject to change without notice.
- Update date : 2019.02.07

www.coilmaster.com

单击下面可查看定价，库存，交付和生命周期等信息

[>>coilmaster\(卡尔马斯特\)](#)