

**Features**

- CRM(CQ) Super\_Junction technology
- Much lower Ron\*A performance for On-state efficiency
- Much lower FOM for fast switching efficiency

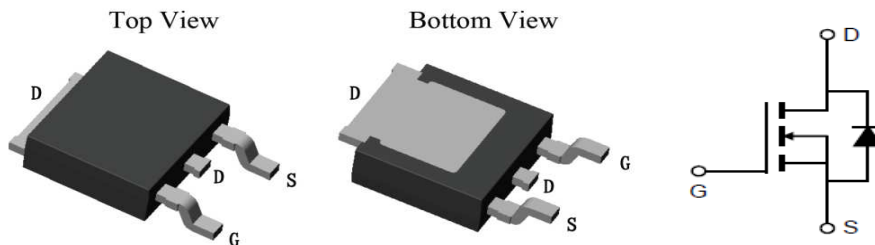
**Applications**

- LED/LCD/PDP TV and monitor Lighting
- Solar/Renewable/UPS-Micro Inverter System
- Charger
- Power Supply

**Product Summary**

V <sub>DS</sub>	650V
R <sub>DS(on)_typ</sub>	0.59Ω
I <sub>D</sub>	7A

**100% Avalanche Tested**


**Package Marking and Ordering Information**

Part #	Marking	Package	Packing	Reel Size	Tape Width	Qty
CRJD650N65G2	-	TO-252	Tape&Reel	N/A	N/A	2500pcs

**Absolute Maximum Ratings**

Parameter	Symbol	Value	Unit
Drain-source voltage	V <sub>DS</sub>	650	V
Continuous drain current T <sub>C</sub> = 25°C T <sub>C</sub> = 100°C	I <sub>D</sub>	7 5	A
Pulsed drain current (T <sub>C</sub> = 25°C, t <sub>p</sub> limited by T <sub>jmax</sub> )	I <sub>D pulse</sub>	28	A
Avalanche energy, single pulse (L=30mH, R <sub>g</sub> =30Ω)	E <sub>AS</sub>	60	mJ
Gate-Source voltage	V <sub>GS</sub>	±30	V
Power dissipation (T <sub>C</sub> = 25°C)	P <sub>tot</sub>	75	W
Operating junction and storage temperature	T <sub>j</sub> , T <sub>stg</sub>	-55...+150	°C

**Thermal Resistance**

Parameter	Symbol	Value	Unit
Thermal resistance, junction – case. Max	$R_{thJC}$	1.66	°C/W
Thermal resistance, junction – ambient. Max	$R_{thJA}$	133	

**Electrical Characteristic (at  $T_j = 25\text{ }^\circ\text{C}$ , unless otherwise specified)**

Parameter	Symbol	Value			Unit	Test Condition
		min.	typ.	max.		

**Static Characteristic**

Drain-source breakdown voltage	$BV_{DSS}$	650	-	-	V	$V_{GS}=0V, I_D=250\mu A$
Gate threshold voltage	$V_{GS(th)}$	2.8	-	3.8	V	$V_{DS}=V_{GS}, I_D=250\mu A$
Zero gate voltage drain current	$I_{DSS}$	-	-	1	$\mu A$	$V_{DS}=650V, V_{GS}=0V$ $T_C=25^\circ C$ $T_C=150^\circ C$
Gate-source leakage current	$I_{GSS}$	-	0.5	100	nA	$V_{GS}=\pm 30V, V_{DS}=0V$
Drain-source on-state resistance	$R_{DS(on)}$	-	0.59	0.65	$\Omega$	$V_{GS}=10V, I_D=3.5A,$ $T_C=25^\circ C$ $T_C=150^\circ C$
Transconductance	$g_{fs}$	-	5.5	-	S	$V_{DS}=20V, I_D=3.5A$

**Dynamic Characteristic**

Input Capacitance	$C_{iss}$	-	382	-	pF	$V_{GS}=0V, V_{DS}=100V,$ $f=1MHz$
Output Capacitance	$C_{oss}$	-	29	-		
Reverse Transfer Capacitance	$C_{rss}$	-	24	-		
Gate Total Charge	$Q_G$	-	12.5	-	nC	$V_{GS}=10V, V_{DS}=480V,$ $I_D=3.5A, f=1MHz$
Gate-Source charge	$Q_{gs}$	-	2.7	-		
Gate-Drain charge	$Q_{gd}$	-	5.2	-		
Turn-on delay time	$t_{d(on)}$	-	7.4	-	ns	$T_j=25^\circ C, V_{GS}=10V,$ $I_D=3.5A, V_{DS}=400V,$ $R_g=27\Omega$
Rise time	$t_r$	-	9.4	-		
Turn-off delay time	$t_{d(off)}$	-	48	-		
Fall time	$t_f$	-	7.5	-		
Gate resistance	$R_G$	-	6.5	-	$\Omega$	$V_{GS}=0V, V_{DS}=0V,$ $f=1MHz$

**Body Diode Characteristic**

Parameter	Symbol	Value			Unit	Test Condition
		min.	typ.	max.		
Body Diode Forward Voltage	$V_{SD}$	0.5	0.85	1	V	$V_{GS}=0V, I_{SD}=3.5A$
Body Diode Reverse Recovery Time	$t_{rr}$	-	189	-	ns	$I_{sd}=3.5A$ $dI/dt=100A/\mu s, V_{ds}=100V$
Body Diode Reverse Recovery Charge	$Q_{rr}$	-	1.5	-	uC	

## Typical Performance Characteristics

Fig 1. Output Characteristics (Tj=25°C)

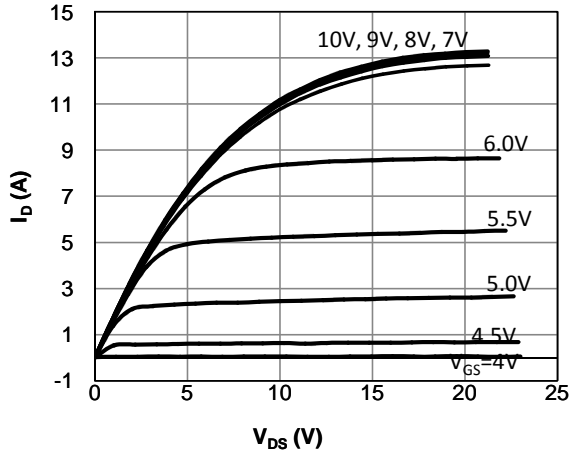


Fig 2. Output Characteristics (Tj=150°C)

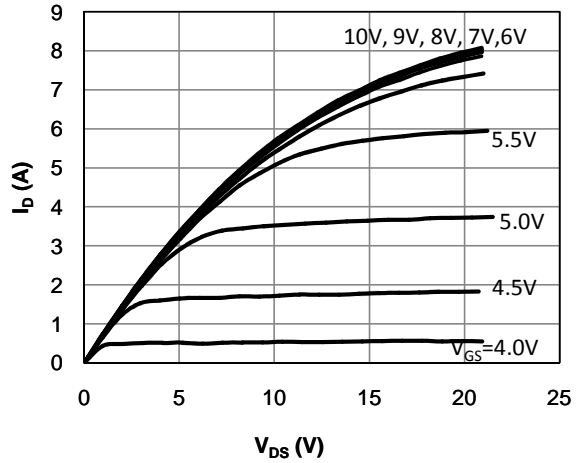


Fig 3: Transfer Characteristics

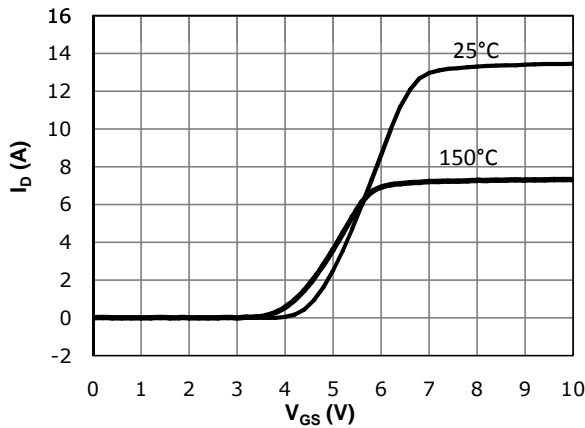


Fig 4: Vth Vs Tj Temperature Characteristics

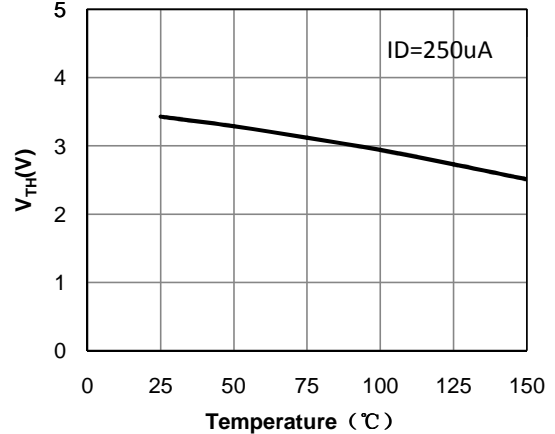


Fig 5: Rds(on) Vs Ids Characteristics (Tc=25°C)

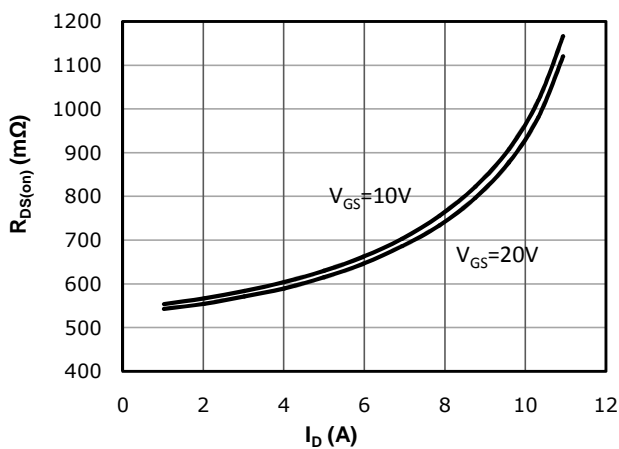
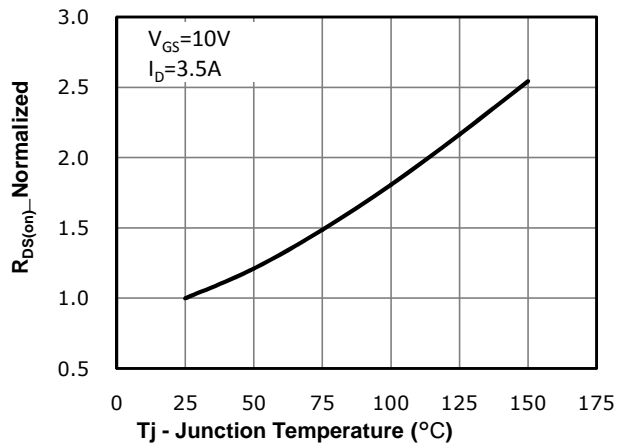
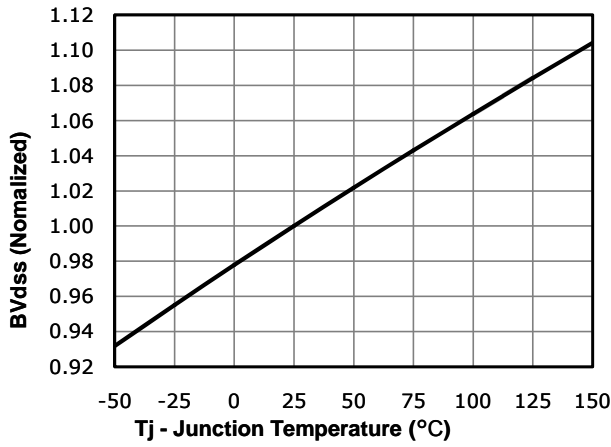


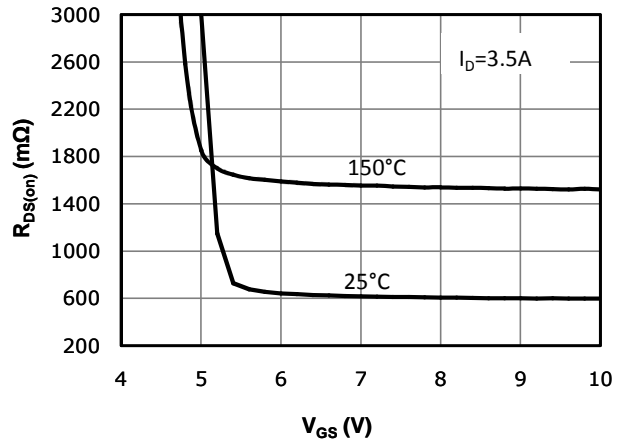
Fig 6: Rds(on) vs. Temperature



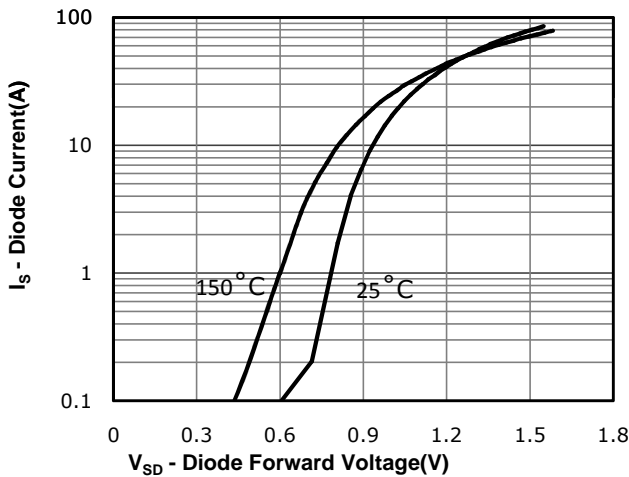
**Fig 7: BVDSS vs. Temperature**



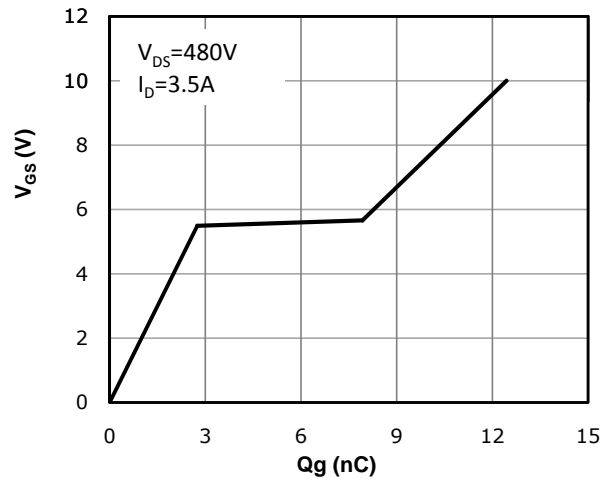
**Fig 8: Rds(on) vs Gate Voltage**



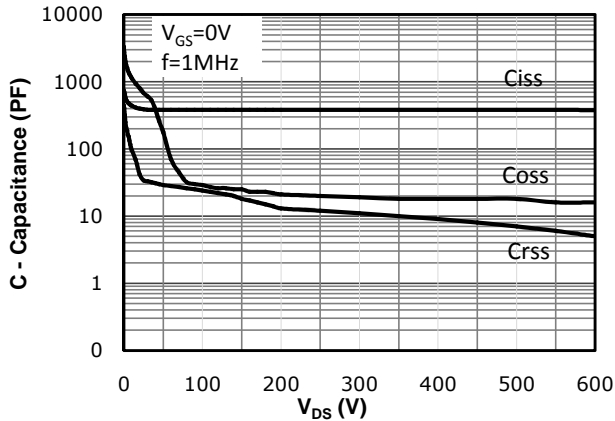
**Fig 9: Body-diode Forward Characteristics**



**Fig 10: Gate Charge Characteristics**



**Fig 11: Capacitance Characteristics**



**Fig 12: Safe Operating Area**

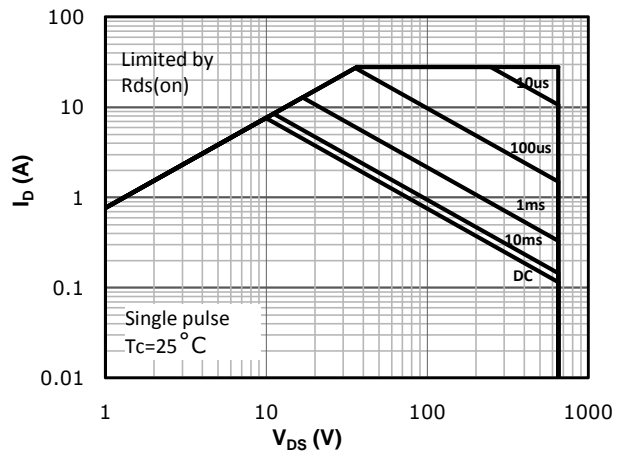
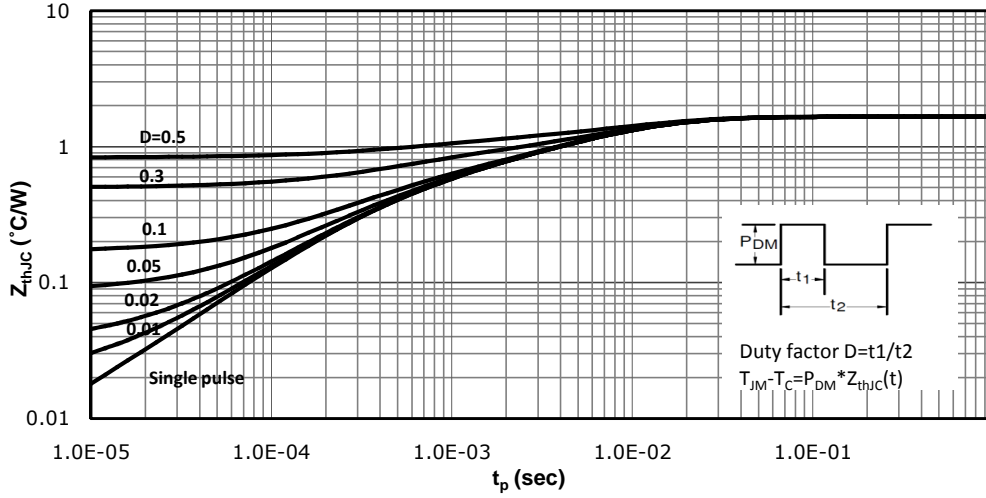
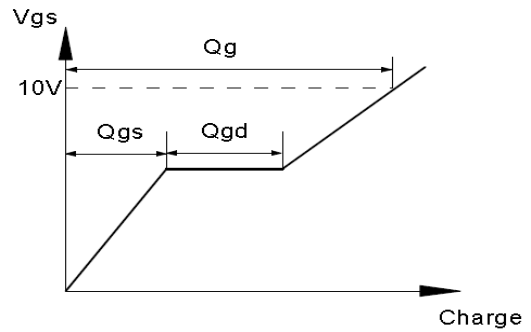
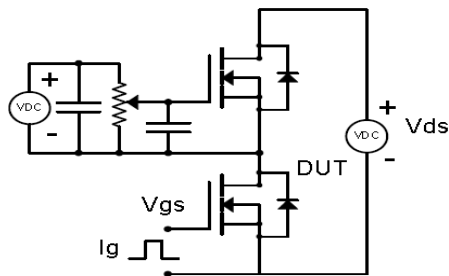


Fig 13: Max. Transient Thermal Impedance

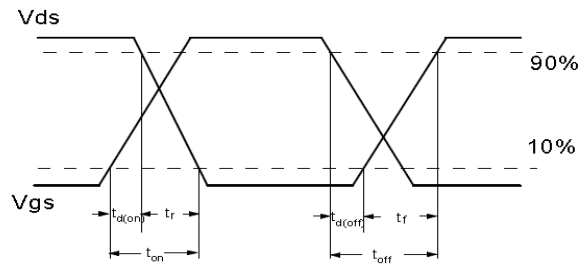
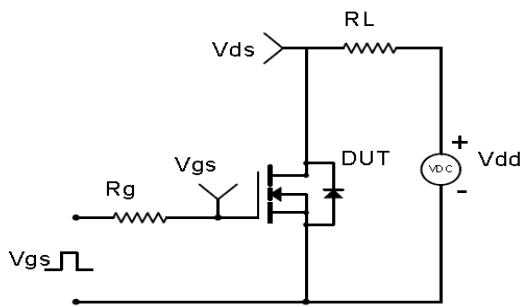


## Test Circuit & Waveform

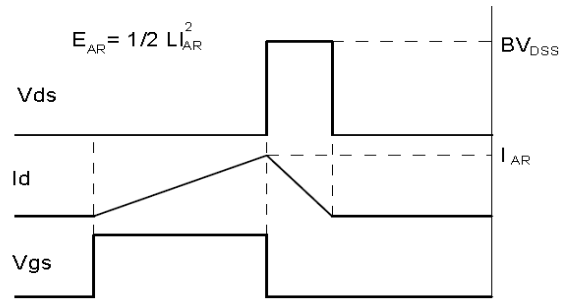
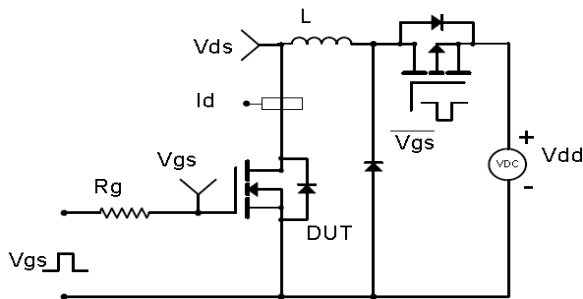
Gate Charge Test Circuit & Waveform



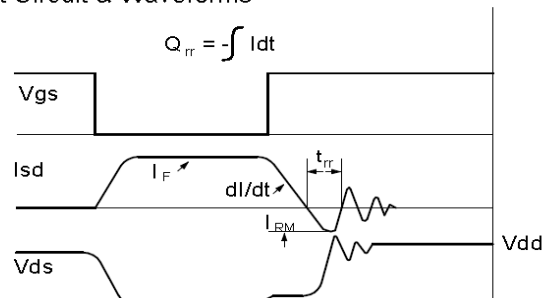
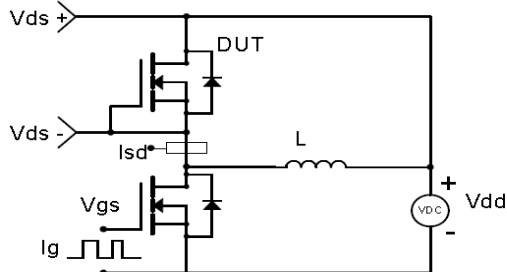
Resistive Switching Test Circuit & Waveforms



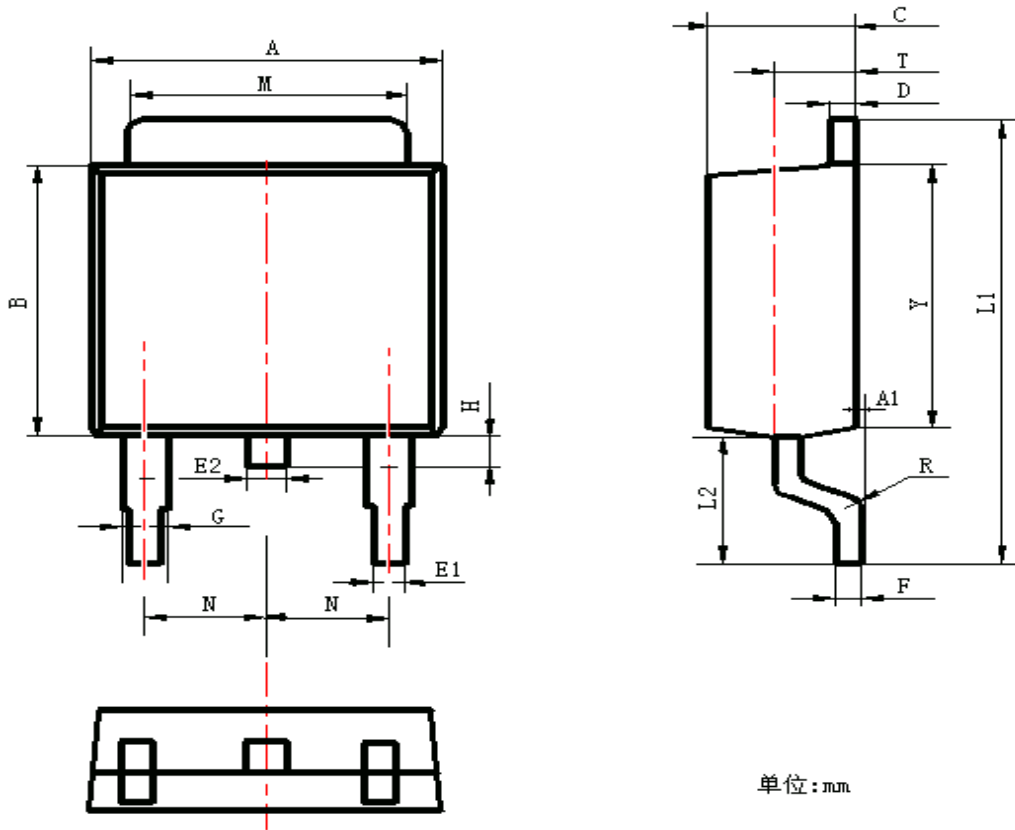
Unclamped Inductive Switching (UIS) Test Circuit & Waveforms



Diode Recovery Test Circuit & Waveforms



## Package Outline: TO-252



Symbol	Dimensions In Millimeters		Dimensions In Inches	
	Min.	Max.	Min.	Max.
A	6.30	6.90	0.248	0.272
A1	0.00	0.16	0.000	0.006
B	5.70	6.30	0.224	0.248
C	2.10	2.50	0.083	0.098
D	0.30	0.70	0.012	0.028
E1	0.60	0.90	0.024	0.035
E2	0.70	1.00	0.028	0.039
F	0.30	0.60	0.012	0.024
G	0.70	1.20	0.028	0.047
L1	9.60	10.50	0.378	0.413
L2	2.70	3.10	0.106	0.122
H	0.40	1.00	0.016	0.039
M	5.10	5.50	0.201	0.217
N	2.09	2.49	0.082	0.098
R	0.30		0.012	
T	1.40	1.60	0.055	0.063
Y	5.10	6.30	0.201	0.248



**Revision History**

Revision	Date	Major changes
1.0	2020-8-27	Release of first version

**Disclaimer**

Unless otherwise specified in the datasheet, the product is designed and qualified as a standard commercial product and is not intended for use in applications that require extraordinary levels of quality and reliability, such as automotive, aviation/aerospace and life-support devices or systems.

Any and all semiconductor products have certain probability to fail or malfunction, which may result in personal injury, death or property damage. Customer are solely responsible for providing adequate safe measures when design their systems.

CRM(CQ) reserves the right to improve product design, function and reliability without notice.

单击下面可查看定价，库存，交付和生命周期等信息

[>>CRMICRO\(华润微\)](#)