

Features

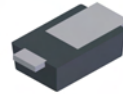
- Guard Ring Die Construction for Transient Protection
- High Surge Capability
- **Lead Free Finish, RoHS Compliant (Note 1)**
- **"Green" Molding Compound (No Br, Sb)**
- **Ultra-Small Surface Mount Package**
- **Qualified to AEC-Q101 Standards for High Reliability**

Mechanical Data

- Case: PowerDI®323
- Case Material: Molded Plastic, "Green" Molding Compound. UL Flammability Classification Rating 94V-0
- Moisture Sensitivity: Level 1 per J-STD-020D
- Polarity: Cathode Band
- Terminals: Finish - Matte Tin annealed over Copper leadframe. Solderable per MIL-STD-202, Method 208
- Marking Information: See Page 3
- Ordering Information: See Page 3
- Weight: 0.006 grams (approximate)



Top View



Bottom View

Maximum Ratings @T_A = 25°C unless otherwise specified

Single phase, half wave, 60Hz, resistive or inductive load.
 For capacitance load, derate current by 20%.

| Characteristic | Symbol | Value | Unit |
|--|--------------------|-------|------|
| Peak Repetitive Reverse Voltage | V _{RRM} | 20 | V |
| Working Peak Reverse Voltage | V _{RWM} | | |
| DC Blocking Voltage | V _R | | |
| Average Forward Current (See also figure 4) | I _{F(AV)} | 2.0 | A |
| Non-Repetitive Peak Forward Surge Current 8.3ms single half sine-wave superimposed on rated load | I _{FSM} | 33 | A |

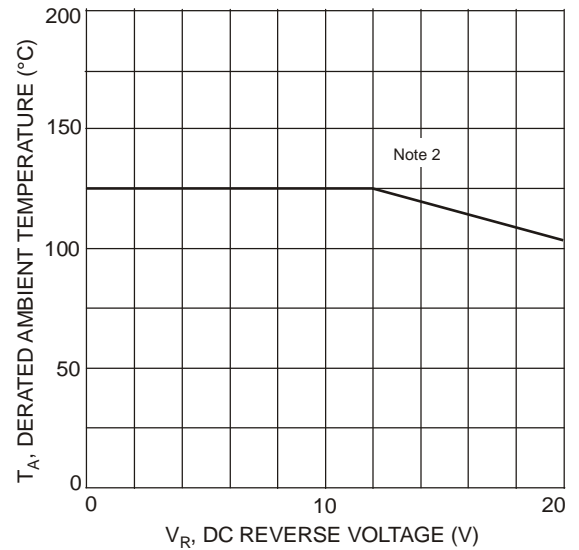
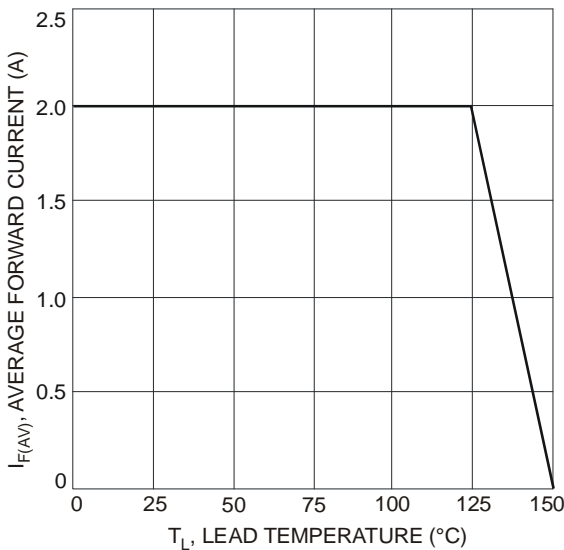
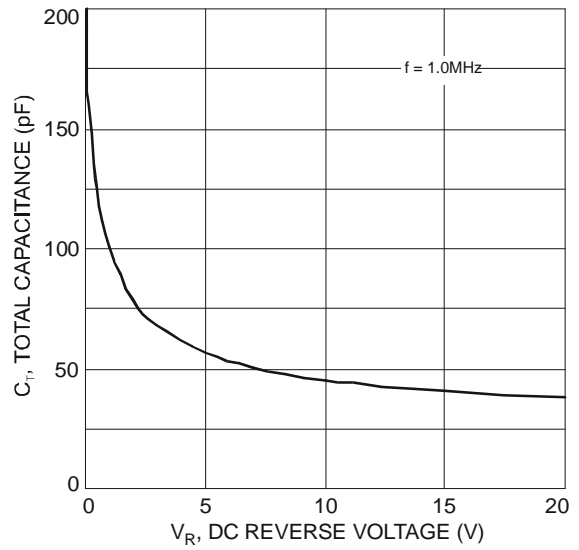
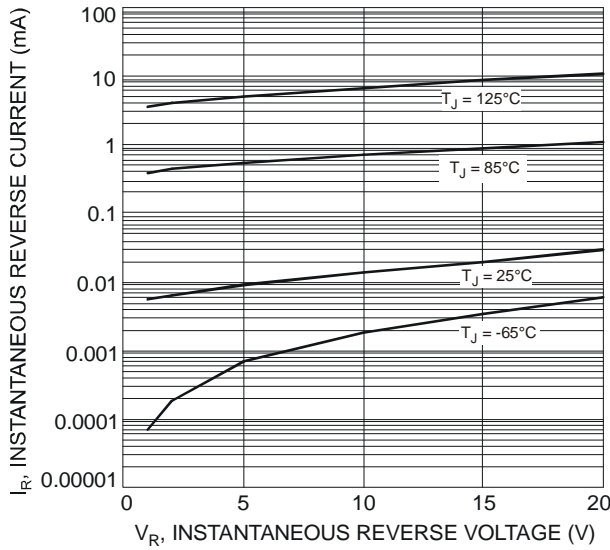
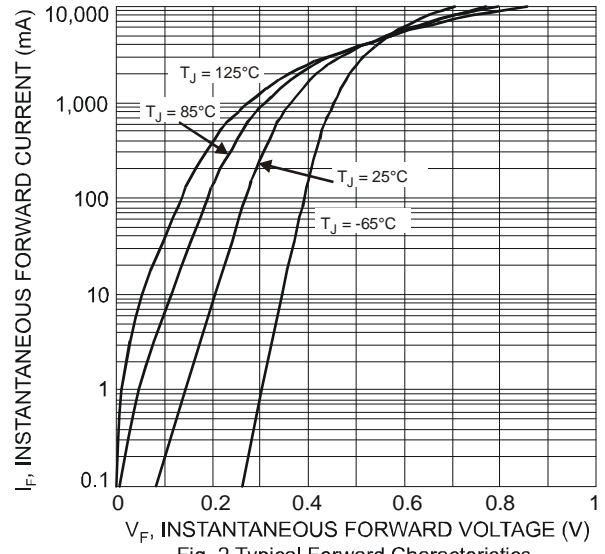
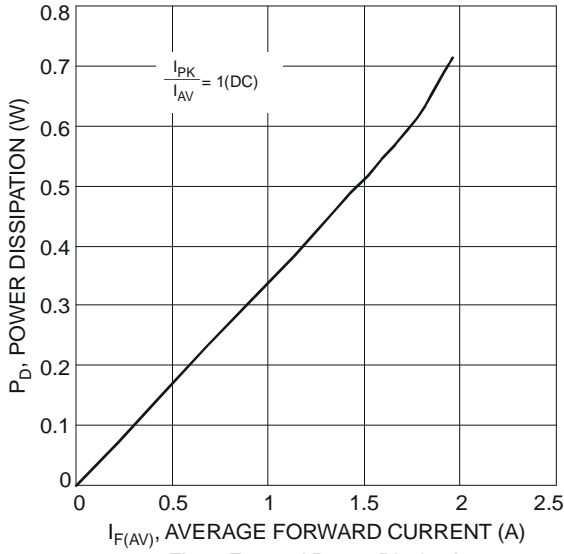
Thermal Characteristics

| Characteristic | Symbol | Typ | Max | Unit |
|---|-----------------------------------|-------------|-----|------|
| Thermal Resistance Junction to Soldering Point | R _{θJS} | — | 6 | °C/W |
| Thermal Resistance Junction to Ambient Air (Note 2) | R _{θJA} | 170 | — | °C/W |
| Thermal Resistance Junction to Ambient Air (Note 3) | R _{θJA} | 144 | — | °C/W |
| Operating and Storage Temperature Range | T _J , T _{STG} | -65 to +125 | | °C |

Electrical Characteristics @T_A = 25°C unless otherwise specified

| Characteristic | Symbol | Min | Typ | Max | Unit | Test Condition |
|--------------------------|----------------|-----|------|------|----------|---|
| Forward Voltage | V _F | — | — | 0.44 | V | I _F = 1.0A, T _A = 25°C |
| | | — | 0.42 | 0.49 | | I _F = 2.0A, T _A = 25°C |
| | | — | — | 0.36 | | I _F = 1.0A, T _A = 125°C |
| | | — | 0.35 | 0.47 | | I _F = 2.0A, T _A = 125°C |
| Leakage Current (Note 4) | I _R | — | 30 | 160 | μA mA | V _R = 20V, T _A = 25°C |
| | | — | 11 | 30 | | V _R = 20V, T _A = 125°C |
| Total Capacitance | C _T | — | 46 | — | pF | V _R = 10V, f = 1.0MHz |

- Notes:
1. EU Directive 2002/95/EC (RoHS). All applicable RoHS exemptions applied, see *EU Directive 2002/95/EC Annex Notes*.
 2. FR-4 PCB, 2 oz. Copper, minimum recommended pad layout per <http://www.diodes.com/datasheets/ap02001.pdf>.
 3. Polyimide PCB, 2 oz. Copper, minimum recommended pad layout per <http://www.diodes.com/datasheets/ap02001.pdf>.
 4. Short duration pulse test to minimize self-heating effect.

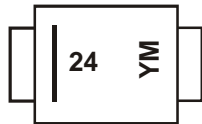


PowerDI is a registered trademark of Diodes Incorporated.

Ordering Information (Note 5)

| Part Number | Case | Packaging |
|-------------|--------------------------|------------------|
| PD3S220L-7 | PowerDI [®] 323 | 3000/Tape & Reel |

Notes: 5. For packaging details, go to our website at <http://www.diodes.com/datasheets/ap02007.pdf>.

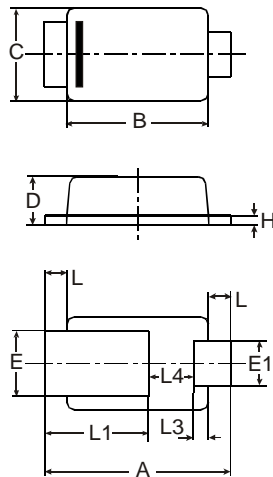
Marking Information


24 = Product Type Marking Code
 YM = Date Code Marking
 Y = Year (ex: W = 2009)
 M = Month (ex: 9 = September)

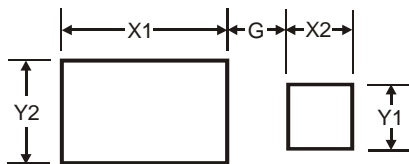
Date Code Key

| Year | 2009 | 2010 | 2011 | 2012 | 2013 | 2014 | 2015 |
|------|------|------|------|------|------|------|------|
| Code | W | X | Y | Z | A | B | C |

| Month | Jan | Feb | Mar | Apr | May | Jun | Jul | Aug | Sep | Oct | Nov | Dec |
|-------|-----|-----|-----|-----|-----|-----|-----|-----|-----|-----|-----|-----|
| Code | 1 | 2 | 3 | 4 | 5 | 6 | 7 | 8 | 9 | O | N | D |

Package Outline Dimensions


| PowerDI [®] 323 | | | |
|--------------------------|------|------|------|
| Dim | Min | Max | Typ |
| A | 2.40 | 2.60 | 2.50 |
| B | 1.85 | 1.95 | 1.90 |
| C | 1.20 | 1.30 | 1.25 |
| D | 0.60 | 0.70 | 0.65 |
| E | 0.78 | 0.98 | 0.88 |
| E1 | 0.50 | 0.70 | 0.60 |
| H | 0.08 | 0.18 | 0.13 |
| L | 0.20 | 0.40 | 0.30 |
| L1 | — | — | 1.40 |
| L3 | — | — | 0.20 |
| L4 | 0.40 | 0.80 | 0.60 |
| All Dimensions in mm | | | |

Suggested Pad Layout


| Dimensions | Value (in mm) |
|------------|---------------|
| G | 0.5 |
| X1 | 2.0 |
| X2 | 0.8 |
| Y1 | 0.8 |
| Y2 | 1.1 |

IMPORTANT NOTICE

Diodes Incorporated and its subsidiaries reserve the right to make modifications, enhancements, improvements, corrections or other changes without further notice to any product herein. Diodes Incorporated does not assume any liability arising out of the application or use of any product described herein; neither does it convey any license under its patent rights, nor the rights of others. The user of products in such applications shall assume all risks of such use and will agree to hold Diodes Incorporated and all the companies whose products are represented on our website, harmless against all damages.

LIFE SUPPORT

Diodes Incorporated products are not authorized for use as critical components in life support devices or systems without the expressed written approval of the President of Diodes Incorporated.

单击下面可查看定价，库存，交付和生命周期等信息

[>>Diodes Incorporated\(达尔科技\)](#)