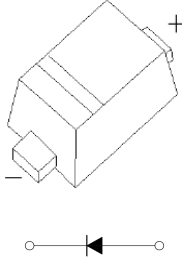


<b>FAST SWITCHING DIODE</b>	<b>SOD-523 Plastic-Encapsulate Diodes</b>
<p><u>SOD-523</u></p> 	<p><b>Features</b></p> <ul style="list-style-type: none"> <li>• Fast switching speed</li> <li>• Ultra-small surface mount package</li> <li>• For general purpose switching applications</li> <li>• High conductance</li> </ul>

<b>Absolute Maximum Ratings (T<sub>a</sub> = 25 °C)</b>				
Parameter	Symbol	Value	Unit	
Non-Repetitive Peak Reverse Voltage	V <sub>RM</sub>	100	V	
Reverse Voltage	V <sub>R</sub>	75	V	
Average Rectified Forward Current	I <sub>F(AV)</sub>	125	mA	
Forward Continuous Current	I <sub>FM</sub>	250	mA	
Non-repetitive Peak Forward Surge Current	I <sub>FSM</sub>	2	A	
at t = 100 ms		1		
Power Dissipation	P <sub>tot</sub>	150	mW	
Thermal Resistance Junction to Ambient Air	R <sub>θJA</sub>	833	°C/W	
Operating Temperature Range	T <sub>J</sub>	- 65 to + 150	°C	
Storage Temperature Range	T <sub>stg</sub>	- 65 to + 150	°C	
<b>Characteristics at T<sub>a</sub> = 25 °C</b>				
Parameter	Symbol	Min.	Max.	Unit
Reverse Breakdown Voltage at I <sub>R</sub> = 1 μA	V <sub>(BR)R</sub>	75	-	V
Forward Voltage at I <sub>F</sub> = 1 mA at I <sub>F</sub> = 10 mA at I <sub>F</sub> = 50 mA at I <sub>F</sub> = 150 mA	V <sub>F</sub>	-	0.715	V
		-	0.855	
		-	1	
		-	1.25	
Peak Reverse Current at V <sub>R</sub> = 75 V at V <sub>R</sub> = 20 V at V <sub>R</sub> = 75 V, T <sub>J</sub> = 150 °C at V <sub>R</sub> = 25 V, T <sub>J</sub> = 150 °C	I <sub>R</sub>	-	1	μA
		-	25	nA
		-	50	μA
		-	30	μA
Total Capacitance at V <sub>R</sub> = 0 V, f = 1 MHz	C <sub>T</sub>	-	2	pF
Reverse Recovery Time at I <sub>rr</sub> = 0.1 X I <sub>R</sub> , I <sub>F</sub> = I <sub>R</sub> = 10 mA, R <sub>L</sub> = 100 Ω	t <sub>rr</sub>	-	4	ns

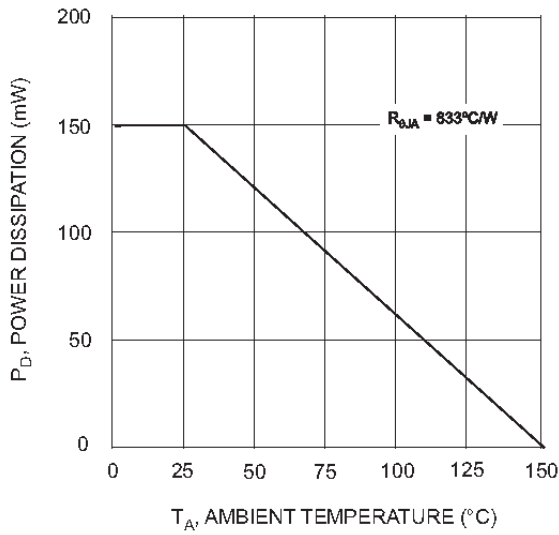


Fig. 1 Derating Curve

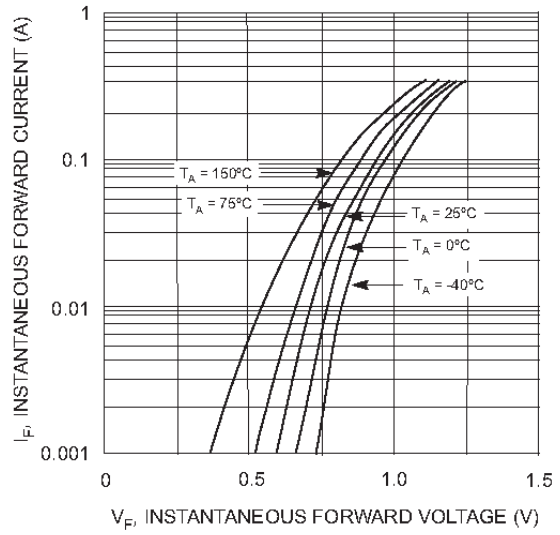


Fig. 2 Forward Characteristics

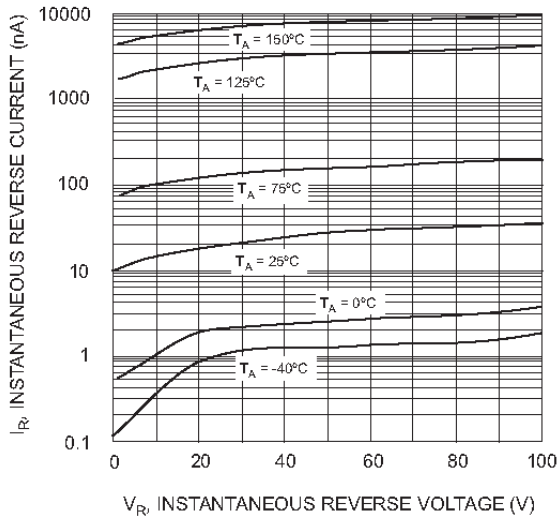


Fig. 3 Typical Reverse Characteristics

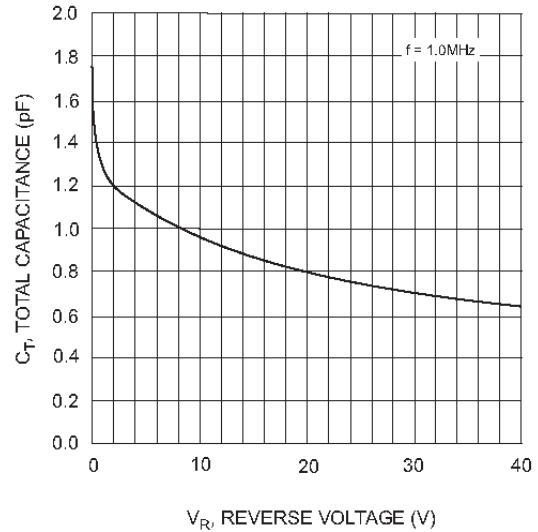
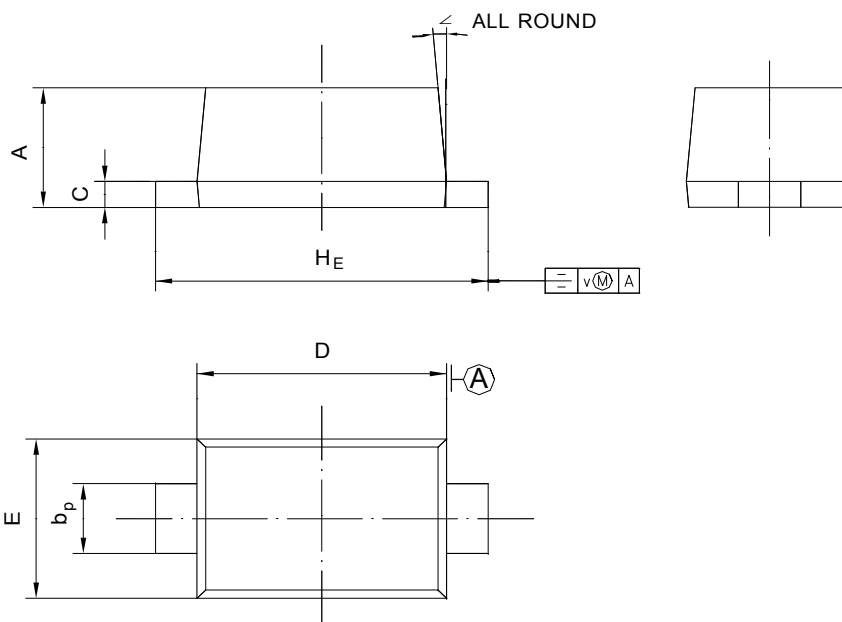


Fig. 4 Typical Capacitance vs. Reverse Voltage

**PACKAGE OUTLINE**

Plastic surface mounted package; 2 leads



UNIT	A	b <sub>p</sub>	C	D	E	H <sub>E</sub>	V	∠
mm	0.70	0.4	0.135	1.25	0.85	1.7	0.1	5°
	0.60	0.3	0.100	1.15	0.75	1.5		

单击下面可查看定价，库存，交付和生命周期等信息

[>>DIOS\(迪恩思\)](#)