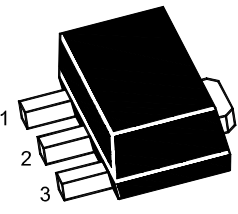


<b>TRANSISTOR (PNP)</b>	<b>SOT-89 Plastic-Encapsulate Transistors</b>
<p><b>SOT-89</b></p>  <p>1.Base 2.Collector 3.Emitter SOT-89 Plastic Package</p>	<p><b>Features</b></p> <ul style="list-style-type: none"> <li>● Complementary to 2SC2873</li> <li>● Small Flat Package</li> <li>● Power Amplifier and Switching Applications</li> <li>● Low Saturation Voltage</li> <li>● High Speed Switching Time</li> </ul>

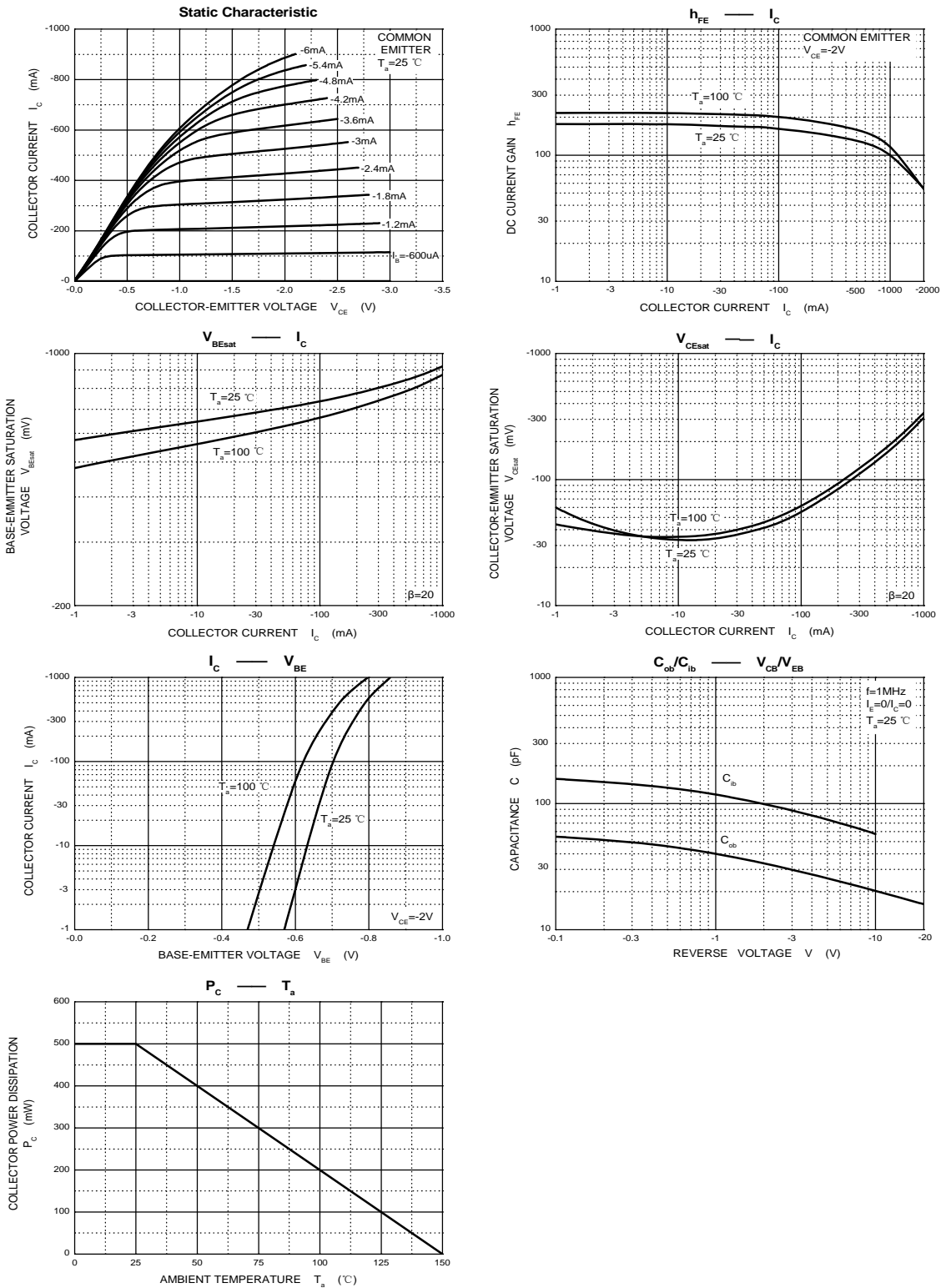
**MAXIMUM RATINGS (T<sub>a</sub>=25°C unless otherwise noted)**

Symbol	Parameter	Value	Unit
V <sub>CBO</sub>	Collector-Base Voltage	-50	V
V <sub>CEO</sub>	Collector-Emitter Voltage	-50	V
V <sub>EBO</sub>	Emitter-Base Voltage	-5	V
I <sub>C</sub>	Collector Current	-2	A
P <sub>C</sub>	Collector Power Dissipation	500	mW
R <sub>θJA</sub>	Thermal Resistance From Junction To Ambient	250	°C/W
T <sub>J</sub>	Junction Temperature	150	°C
T <sub>stg</sub>	Storage Temperature	-55~+150	°C

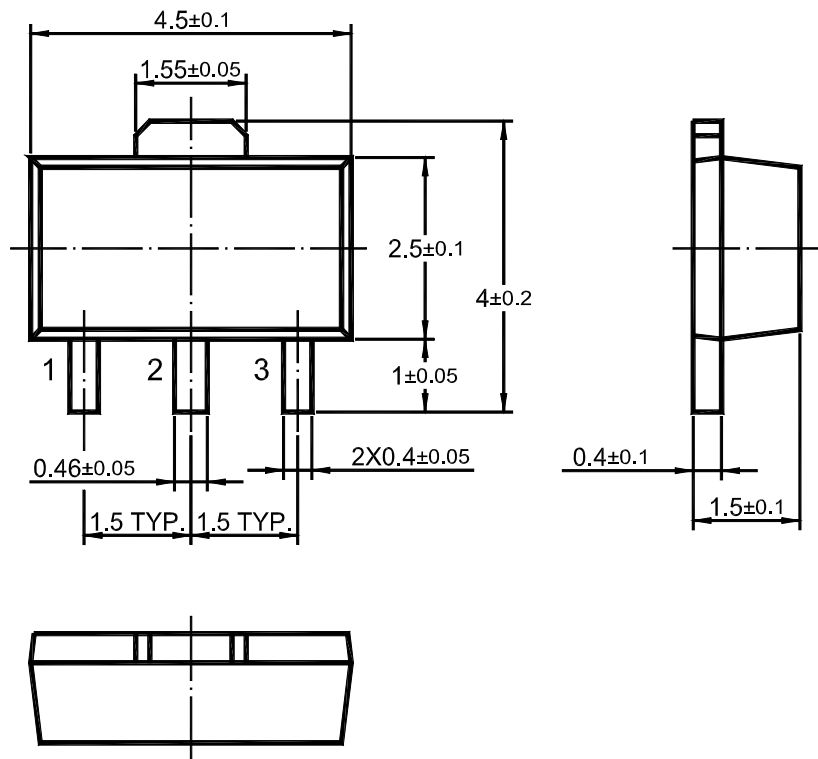
**ELECTRICAL CHARACTERISTICS (T<sub>a</sub>=25°C unless otherwise specified)**

Parameter	Symbol	Test conditions	Min	Typ	Max	Unit
Collector-base breakdown voltage	V <sub>(BR)CBO</sub>	I <sub>C</sub> = -0.1mA, I <sub>E</sub> =0	-50			V
Collector-emitter breakdown voltage	V <sub>(BR)CEO</sub>	I <sub>C</sub> =-10mA, I <sub>B</sub> =0	-50			V
Emitter-base breakdown voltage	V <sub>(BR)EBO</sub>	I <sub>E</sub> =-0.1mA, I <sub>C</sub> =0	-5			V
Collector cut-off current	I <sub>CBO</sub>	V <sub>CB</sub> =-50V, I <sub>E</sub> =0			-100	nA
Emitter cut-off current	I <sub>EBO</sub>	V <sub>EB</sub> =-5V, I <sub>C</sub> =0			-100	nA
DC current gain	h <sub>FE</sub>	V <sub>CE</sub> =-2V, I <sub>C</sub> =-500mA	70		240	
		V <sub>CE</sub> =-2V, I <sub>C</sub> =-2A	20			
Collector-emitter saturation voltage	V <sub>CE(sat)</sub>	I <sub>C</sub> =-1A, I <sub>B</sub> =-50mA			-0.5	V
Base-emitter saturation voltage	V <sub>BE(sat)</sub>	I <sub>C</sub> =-1A, I <sub>B</sub> =-50mA			-1.2	V
Collector output capacitance	C <sub>ob</sub>	V <sub>CB</sub> =-10V, I <sub>E</sub> =0, f=1MHz		40		pF
Transition frequency	f <sub>T</sub>	V <sub>CE</sub> =-2V, I <sub>C</sub> = -0.5A	100			MHz

## Typical Characteristics



**SOT-89 PACKAGE OUTLINE**



Dimensions in mm

单击下面可查看定价，库存，交付和生命周期等信息

[>>DIOS\(迪恩思\)](#)