

# BY8006

## FAST RECOVERY HIGH VOLTAGE RECTIFIER DIODE

**PRV : 8000 Volts**

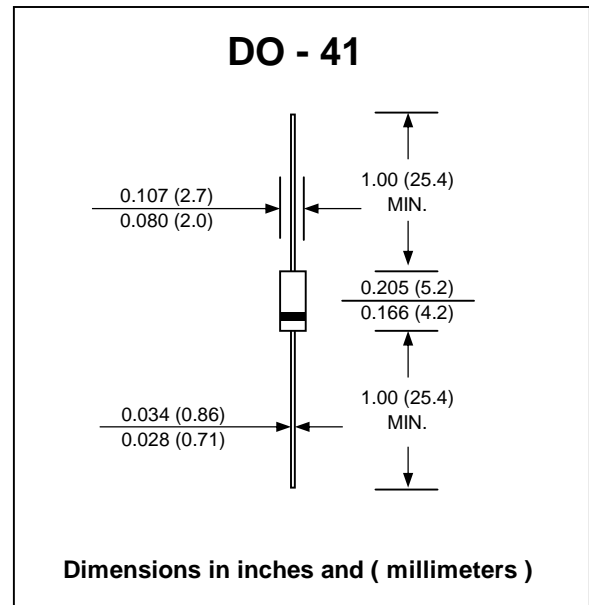
**I<sub>F(AV)</sub> : 10 mA**

### FEATURES :

- \* High current capability
- \* High surge current capability
- \* High reliability
- \* Low reverse current
- \* Low forward voltage drop
- \* **Pb / RoHS Free**

### MECHANICAL DATA :

- \* Case : DO-41 Molded plastic
- \* Epoxy : UL94V-O rate flame retardant
- \* Lead : Axial lead solderable per MIL-STD-202, Method 208 guaranteed
- \* Polarity : Color band denotes cathode end
- \* Mounting position : Any
- \* Weight : 0.34 gram



### MAXIMUM RATINGS AND ELECTRICAL CHARACTERISTICS

Rating at 25 °C ambient temperature unless otherwise specified.  
Single phase, half wave, 60 Hz, resistive or inductive load.  
For capacitive load, derate current by 20%.

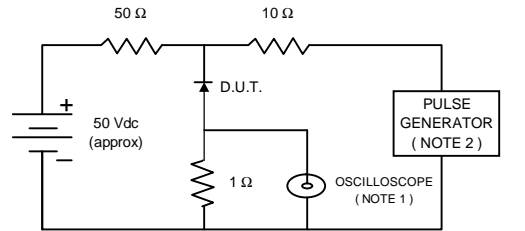
RATING	SYMBOL	VALUE	UNIT
Maximum Repetitive Peak Reverse Voltage	V <sub>RRM</sub>	8000	V
Maximum Working Reverse Voltage	V <sub>RW</sub>	6000	V
Maximum Average Forward Current (See Fig. 2)	I <sub>F(AV)</sub>	10	mA
Maximum Repetitive Peak Forward Current (Note 1)	I <sub>FRM</sub>	500	mA
Maximum Forward Voltage at I <sub>F</sub> = 100 mA.	V <sub>F</sub>	25	V
Maximum Reverse Current at V <sub>R</sub> = V <sub>RWmax</sub> , T <sub>j</sub> = 120 °C	I <sub>R</sub>	3.0	μA
Maximum Reverse Recovery Time ( Note 2 )	T <sub>rr</sub>	100	ns
Junction Temperature Range	T <sub>J</sub>	- 40 to + 150	°C
Storage Temperature Range	T <sub>STG</sub>	- 40 to + 150	°C

**Notes :**

- (1) Withstands peak currents during flash-over in a picture tube.
- (2) Reverse Recovery Test Conditions : I<sub>F</sub> = 0.5 A, I<sub>R</sub> = 1.0 A, I<sub>rr</sub> = 0.25 A.

## RATING AND CHARACTERISTIC CURVES ( BY8006 )

FIG.1 - REVERSE RECOVERY TIME CHARACTERISTIC AND TEST CIRCUIT DIAGRAM



NOTES: 1. Rise Time = 7 ns max., Input Impedance = 1 megaohm, 22 pF.  
2. Rise time = 10 ns max., Source Impedance = 50 ohms.  
3. All Resistors = Non-inductive Types.

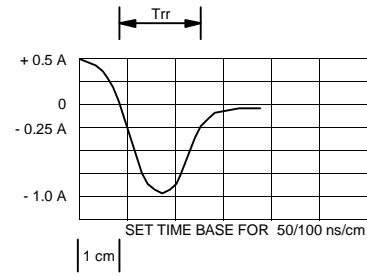


FIG.2 - DERATING CURVE FOR OUTPUT RECTIFIED CURRENT

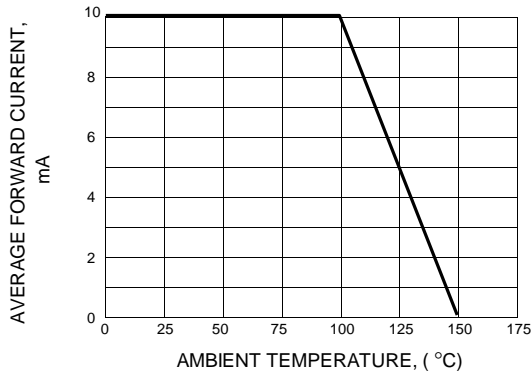


FIG.3 - MAXIMUM PEAK FORWARD CURRENT

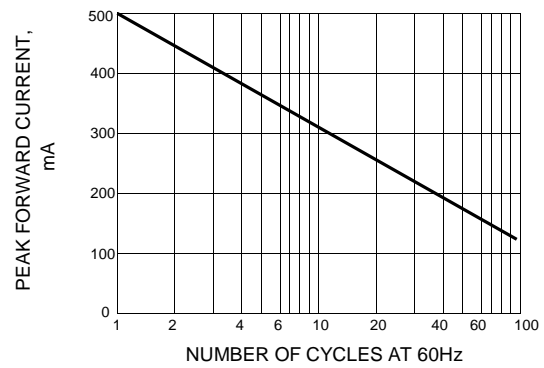


FIG.4 - MAXIMUM FORWARD CHARACTERISTICS

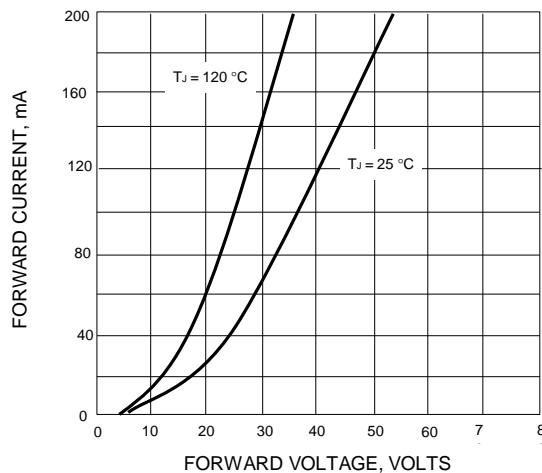
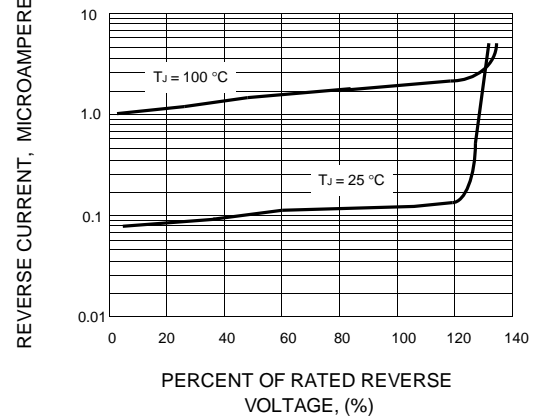


FIG.5 - TYPICAL REVERSE CHARACTERISTICS



单击下面可查看定价，库存，交付和生命周期等信息

[>>EIC](#)