

ES2A - ES2D

PRV : 50 - 200 Volts
Io : 2.0 Amperes

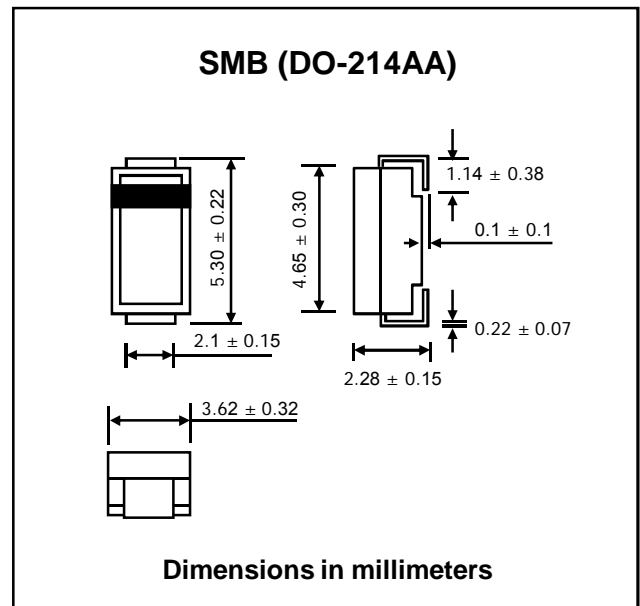
FEATURES :

- * High current capability
- * High surge current capability
- * High reliability
- * Low reverse current
- * Low forward voltage drop
- * Super fast recovery time
- * Pb / RoHS Free

MECHANICAL DATA :

- * Case : SMB Molded plastic
- * Epoxy : UL94V-0 rate flame retardant
- * Lead : Lead Formed for Surface Mount
- * Polarity : Color band denotes cathode end
- * Mounting position : Any
- * Weight : 0.1079 gram

SURFACE MOUNT SUPER FAST RECTIFIERS



MAXIMUM RATINGS AND ELECTRICAL CHARACTERISTICS

Rating at 25 °C ambient temperature unless otherwise specified.
Single phase, half wave, 60 Hz, resistive or inductive load.
For capacitive load, derate current by 20%.

RATING	SYMBOL	ES2A	ES2B	ES2C	ES2D	UNIT
Maximum Recurrent Peak Reverse Voltage	VRRM	50	100	150	200	V
Maximum RMS Voltage	VRMS	35	70	105	140	V
Maximum DC Blocking Voltage	VDC	50	100	150	200	V
Maximum Average Forward Current $T_L = 110^\circ\text{C}$	IF(AV)	2.0				A
Maximum Peak Forward Surge Current 8.3ms Single half sine wave Superimposed on rated load (JEDEC Method)	IFSM	50				A
Maximum Peak Forward Voltage at IF = 2.0 A.	VF	0.9				V
Maximum DC Reverse Current at Rated DC Blocking Voltage	IR	5.0 (Ta = 25°C)				μA
		350 (Ta = 100°C)				
Maximum Reverse Recovery Time (Note 1)	Trr	20				ns
Typical Thermal Resistance, Junction to Ambient	RθJA	75				°C/W
Total Capacitance (Note 2)	CT	18				pf
Junction Temperature Range	TJ	- 65 to + 150				°C
Storage Temperature Range	TSTG	- 65 to + 150				°C

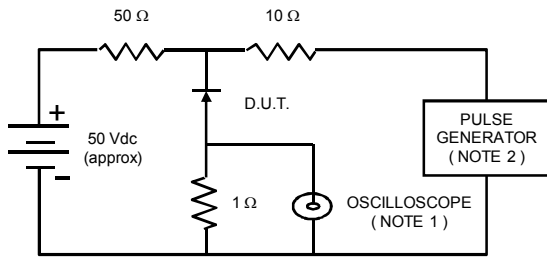
Notes :

(1) Reverse Recovery Test Conditions : IF = 0.5 A, IR = 1.0 A, Irr = 0.25 A.

(2) Measured at 1.0 MHz and applied reverse voltage of 4.0 VDC

RATING AND CHARACTERISTIC CURVES (ES2A - ES2D)

FIG.1 - REVERSE RECOVERY TIME CHARACTERISTIC AND TEST CIRCUIT DIAGRAM



NOTES : 1. Rise Time = 7 ns max., Input Impedance = 1 megaohm, 22 pF.
2. Rise time = 10 ns max., Source Impedance = 50 ohms.
3. All Resistors = Non-inductive Types.

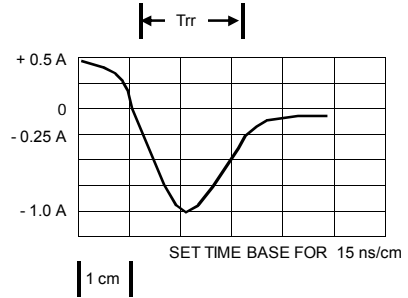


FIG.2 - DERATING CURVE FOR OUTPUT RECTIFIED CURRENT

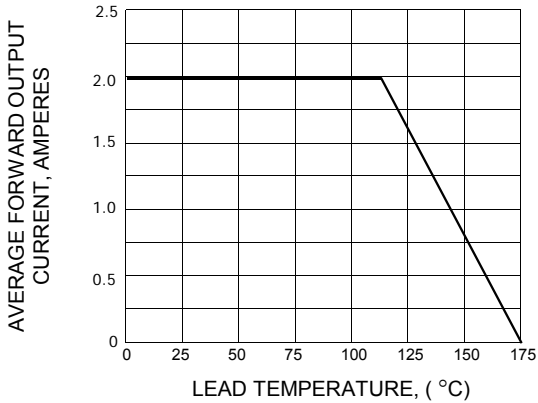


FIG.3 - MAXIMUM NON-REPETITIVE PEAK FORWARD SURGE CURRENT

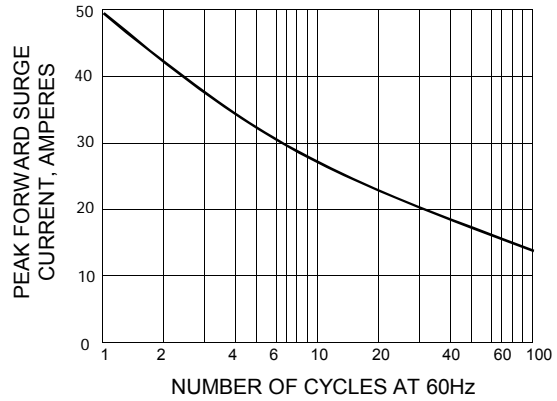


FIG.4 - TYPICAL FORWARD CHARACTERISTICS

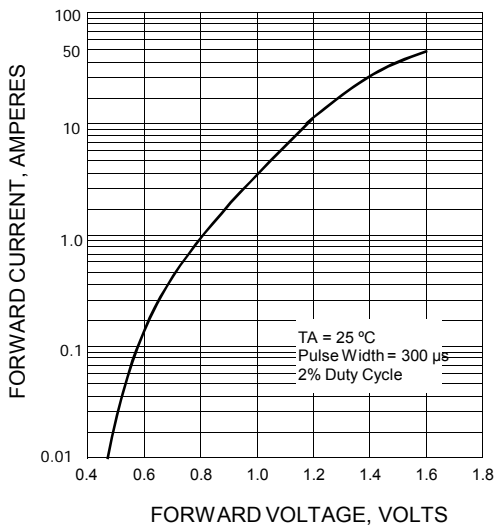
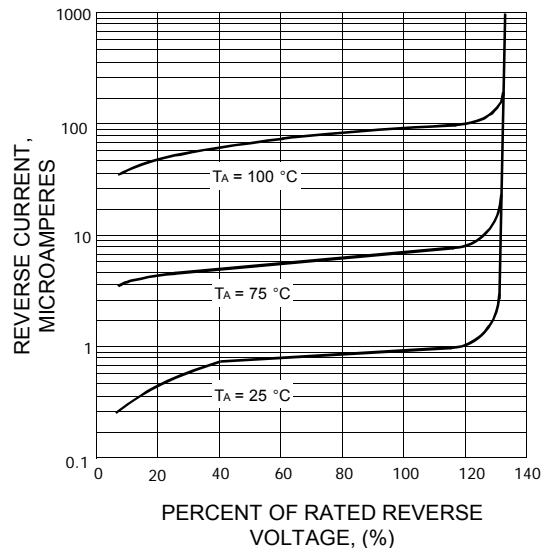


FIG.5 - TYPICAL REVERSE CHARACTERISTICS



单击下面可查看定价，库存，交付和生命周期等信息

[>>EIC](#)