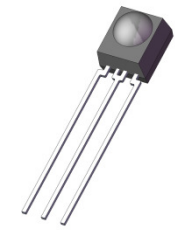


Infrared Receiver Control Receiver Module IRM-36xxT Series

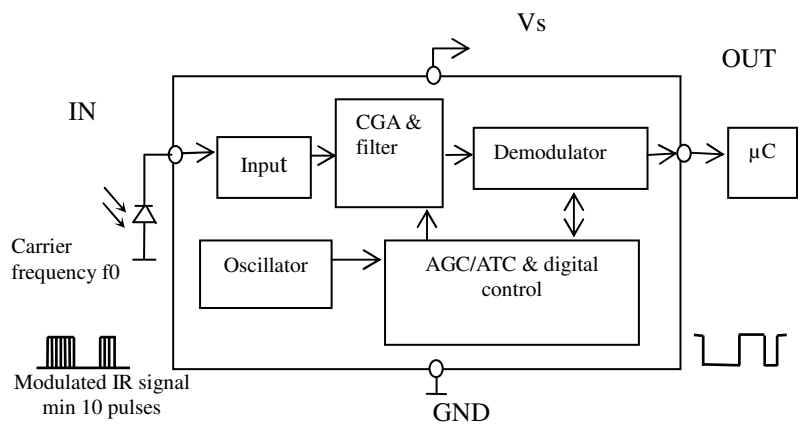


1 2 3

Pin Configuration

1. OUT
2. GND
3. V_{CC}

Block Diagram



Features

- Photo detector and preamplifier in one package
- Internal filter for PCM frequency
- Improved inner shielding against electrical field disturbance
- TTL and CMOS compatibility
- Low power consumption
- Improved immunity against ambient light
- Suitable burst length ≥ 10 cycles/burst
- Pb free
- BiCMOS manufacture IC ; ESD HBM>4000V ; MM>250V
- The product itself will remain within RoHS compliant version.

Description

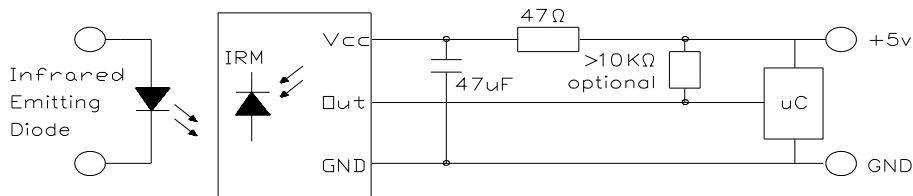
The IRM-36xxT is miniaturized receivers for infrared remote control systems. PIN diode and preamplifier are assembled on lead frame, the epoxy package is designed as IR filter. The demodulated output signal can directly be decoded by a microprocessor. IRM-36xxT is the standard IR remote control receiver series, supporting all major transmission codes.

产品规格咨询热线：梁 SR 18148584520（微信同号）

Applications

- Light detecting portion of remote control
- AV instruments such as Audio, TV, VCR, CD, MD, etc.
- Home appliances such as Air-conditioner, Fan , etc.
- The other equipments with wireless remote control.
- CATV set top boxes
- Multi-media Equipment

Application Circuit



RC Filter should be connected closely between Vcc pin and GND pin.

Parts Table

| Model No. | Carrier Frequency |
|-----------|-------------------|
| IRM-3636T | 36 kHz |
| IRM-3638T | 38 kHz |
| IRM-3640T | 40 kHz |
| IRM-3656T | 56 kHz |

产品规格咨询热线：梁 SR 18148584520（微信同号）

Absolute Maximum Ratings (Ta=25°C)

| Parameter | Symbol | Rating | Unit |
|-------------------------------------|--------|-----------|------|
| Supply Voltage | Vcc | 0~6 | V |
| Operating Temperature | Topr | -20 ~ +80 | °C |
| Storage Temperature | Tstg | -40 ~ +85 | °C |
| Soldering Temperature ^{*1} | Tsol | 260 | °C |

^{*1} 4mm from mold body for less than 10 seconds

Recommended Operating Condition

Supply Voltage Rating: Vcc 2.7V to 5.5V

Electro-Optical Characteristics (Ta=25°C, and Vcc=3.0V)

| Parameter | Symbol | Min. | Typ. | Max. | Unit | Condition |
|---------------------------|-------------|------|------|------|---------|---------------------------------|
| Current consumption | Icc | --- | 1.0 | 1.2 | mA | No input signal |
| Peak wavelength | λ_p | --- | 940 | --- | nm | |
| Reception range | L_0 | 14 | --- | --- | m | At the ray axis ₁ |
| | L_{45} | 6 | --- | --- | | |
| Half angle(horizontal) | φ_h | --- | 45 | --- | deg | |
| Half angle(vertical) | φ_v | --- | 45 | --- | deg | |
| High level pulse width | T_H | 400 | --- | 800 | μs | At the ray axis ₂ |
| Low level pulse width | T_L | 400 | --- | 800 | μs | |
| High level output voltage | V_{OH} | 2.7 | --- | --- | V | |
| Low level output voltage | V_{OL} | --- | --- | 0.25 | V | |

*1: The ray receiving surface at a vertex and relation to the ray axis in the range of $\theta = 0^\circ$ and $\theta = 45^\circ$.

*2: A range from 30cm to the arrival distance. Average value of 50 pulses.

产品规格咨询热线：梁 SR 18148584520（微信同号）

Test method

The specified electro-optical characteristics is satisfied under the following Conditions at the controllable distance.

① Measurement place

A place that is nothing of extreme light reflected in the room.

② External light

Project the light of ordinary white fluorescent lamps which are not high Frequency lamps and must be less then 10 Lux at the module surface.
($E_e \leq 10 \text{Lux}$)

③ Standard transmitter

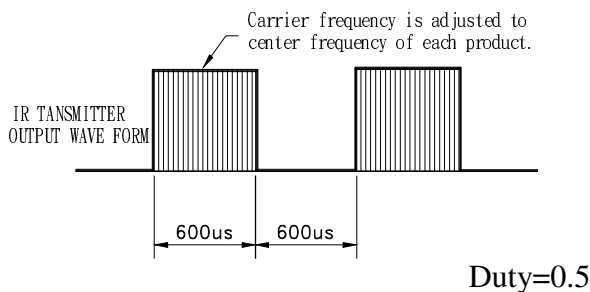
A transmitter whose output is so adjusted as to $V_o=400\text{mVp-p}$ and the output Wave form shown in Fig.-1. According to the measurement method shown in Fig.-2 the standard transmitter is specified.

However, the infrared photodiode to be used for the transmitter should be $\lambda_p=940\text{nm}, \Delta\lambda=50\text{nm}$. Also, photodiode is used of PD438B ($V_r=5\text{V}$).
(Standard light / Light source temperature 2856°K).

④ Measuring system

According to the measuring system shown in Fig.-3

Fig.-1 Transmitter Wave Form



D.U.T output Pulse

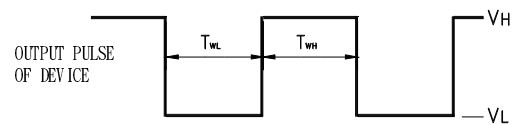


Fig.-2 Measuring Method

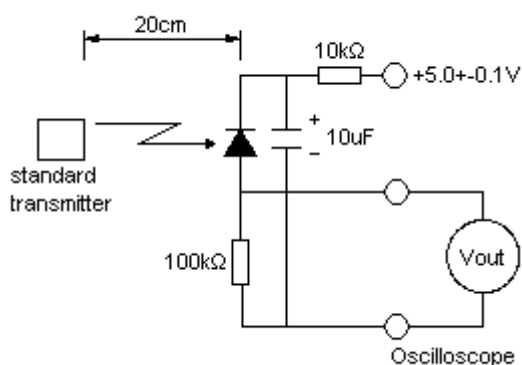
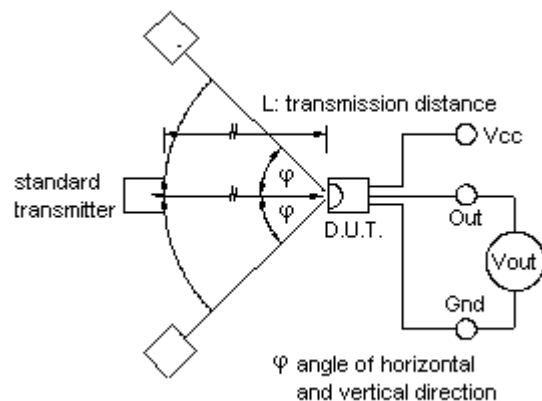


Fig.-3 Measuring System

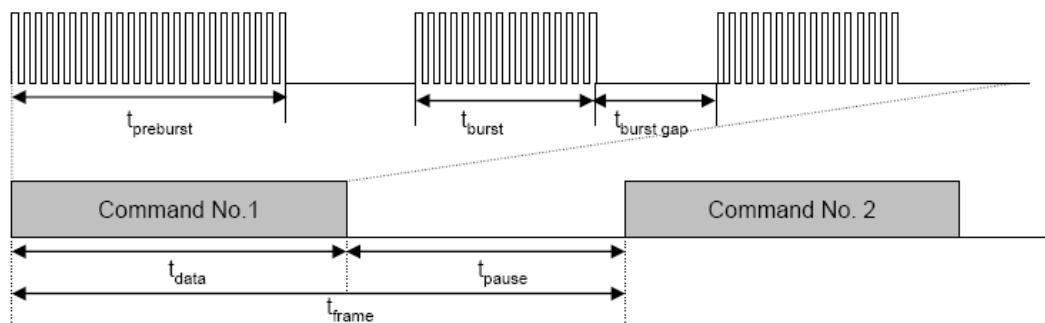


产品规格咨询热线：梁 SR 18148584520（微信同号）

The Notice of Application:

Transmission of remote control signal consist of four parts: Encode Part, IR Transmitter Source, IRM device, Decode Part

1. When IRM-36xxT code select frequency, it need to well understand the center system of encode part.
2. Strong or weak light of IR Transmitter can affect distance of transmission.
3. When using IRM-36xxT device, it requires the composition of code pattern to reach the demand as follows:



| Minimum t_{burst} (number of pulses per burst) | Minimum t_{burst_gap} (number of pulses between two burst) | Minimum t_{pause} |
|--|--|---------------------|
| 10 pulses | 14 pulses | 25 msec |

4. It needs to ensure the translation range of decode part if it is applied to the pulse-width range.

If the above items hardly assure of its application, it'll cause NG(no good) message from the edge of signal.

产品规格咨询热线：梁 SR 18148584520（微信同号）

Typical Electro-Optical Characteristics Curves

Fig.-4 Relative Spectral Sensitivity vs. Wavelength

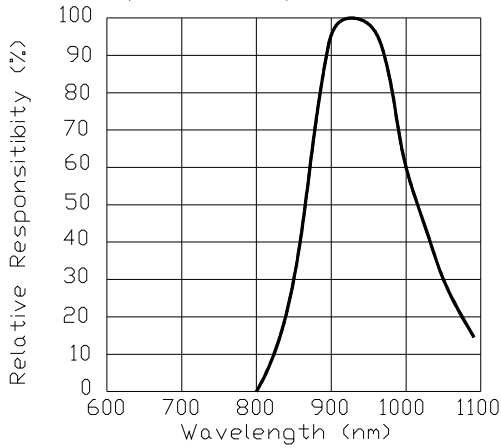


Fig.-5 Relative Transmission Distance vs. Direction

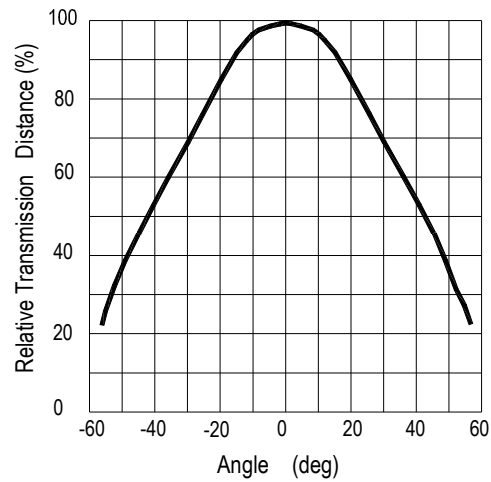


Fig.-6 Output Pulse Length vs. Arrival Distance

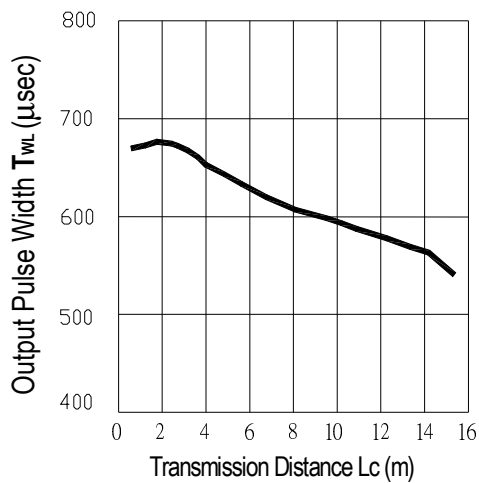
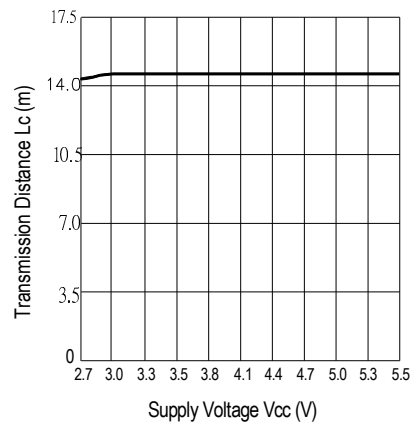


Fig.-7 Arrival Distance vs. Supply Voltage



产品规格咨询热线：梁 SR 18148584520（微信同号）

Fig.-8 Relative Transmission Distance vs. Center Carrier Frequency

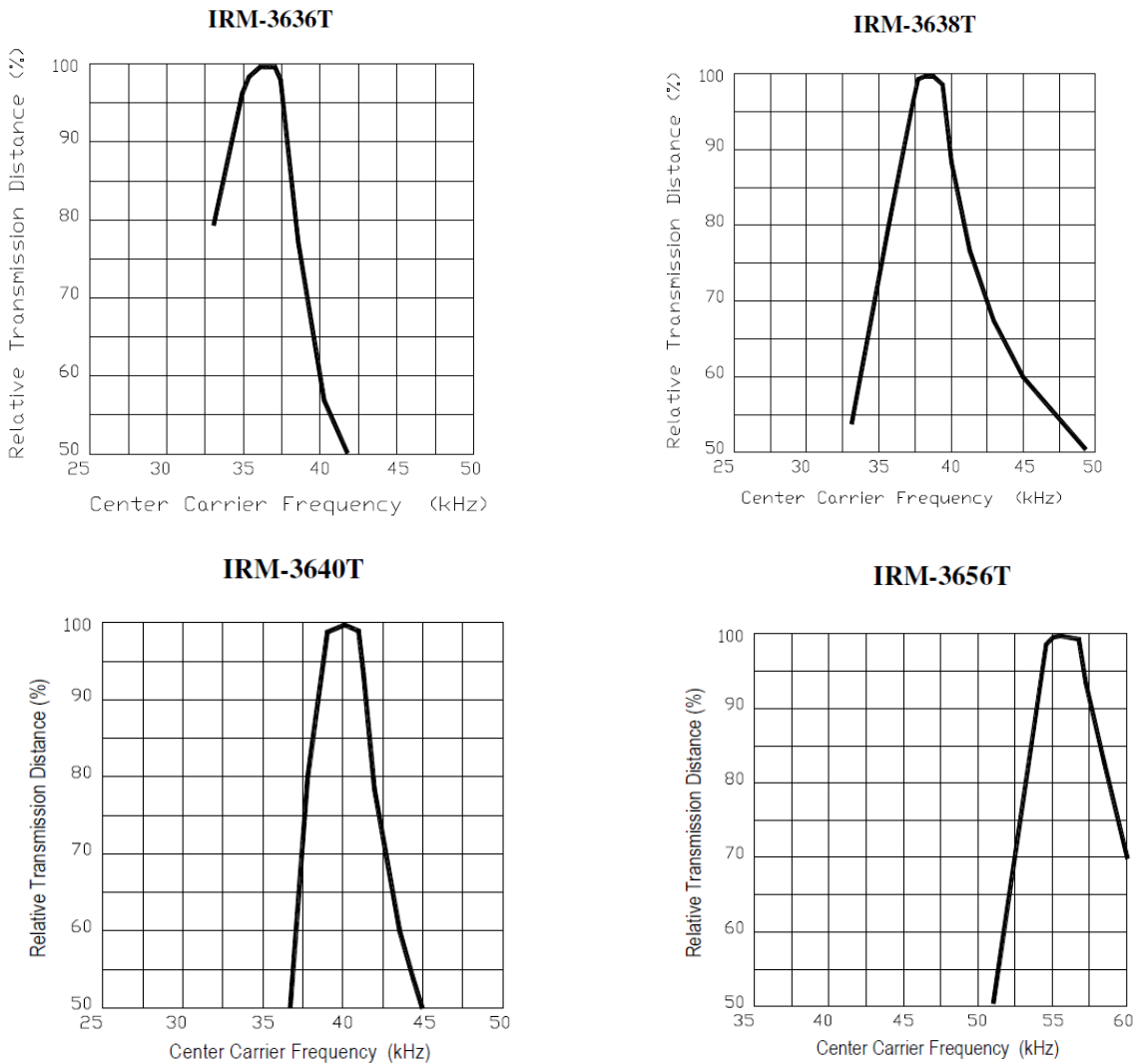
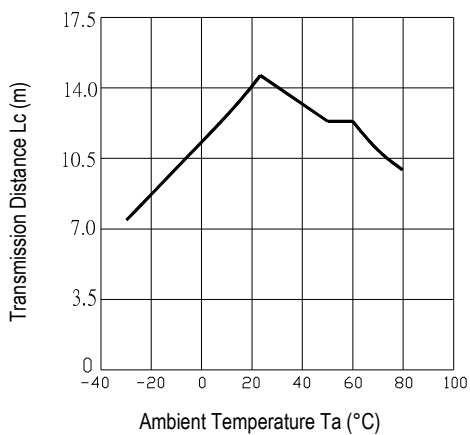
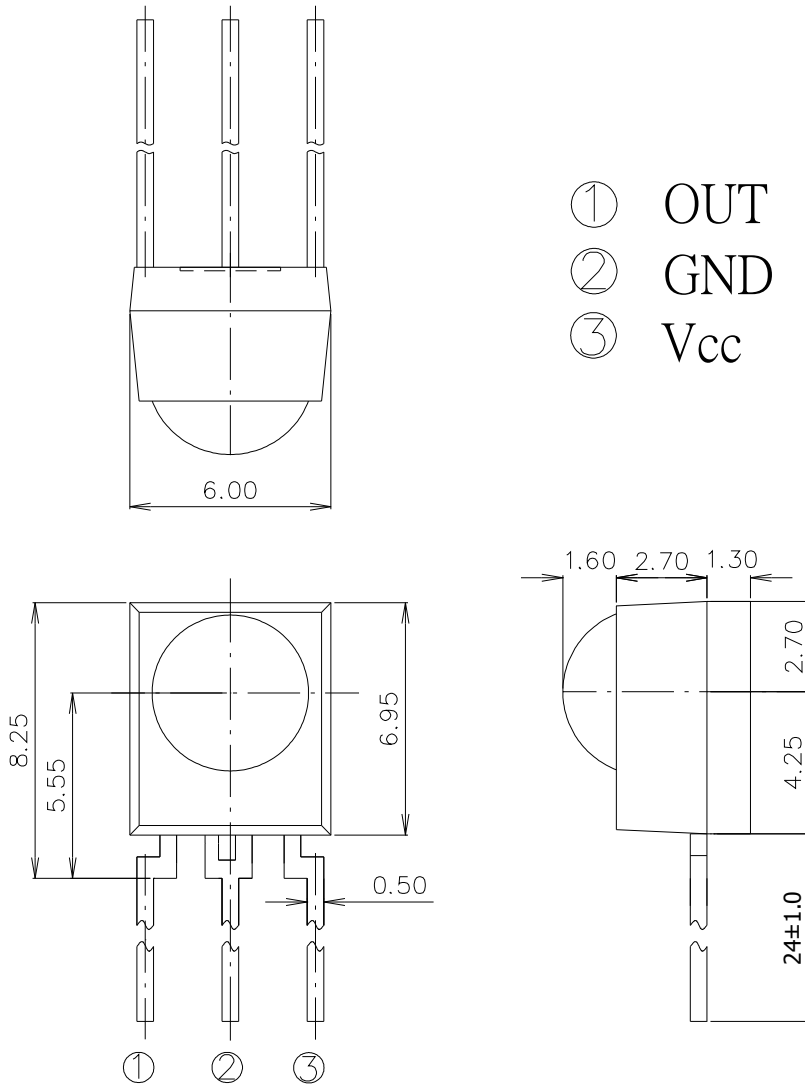


Fig.-9 Arrival Distance vs. Ambient Temperature



产品规格咨询热线：梁 SR 18148584520（微信同号）

Package Dimensions



Unit:mm

Notes: 1.All dimensions are in millimeters. 0.4
2.Tolerances unless dimensions ± 0.3 mm.

产品规格咨询热线：梁 SR 18148584520（微信同号）

Code information

| Protocol | Suitable | Protocol | Suitable |
|----------|----------|--------------------------------|----------|
| NEC | Yes | Sony 12 Bit | Yes |
| RC5 | Yes | Sony 15 Bit | No |
| RC6 | Yes | Sony 20Bit | No |
| RCA | No | Matsushita | Yes |
| Toshiba | Yes | Mitsubishi | Yes |
| Sharp | Yes | Zenith | Yes |
| JVC | Yes | High data rate (4000 bit/s) | NO |

Reliability Test Item And Condition

The reliability of products shall be satisfied with items listed below.

Confidence level : 90%

LTPD : 10%

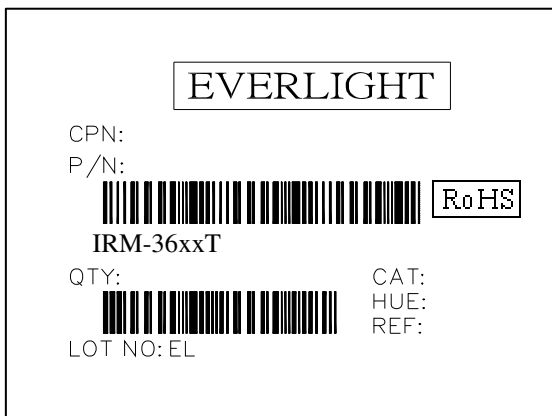
| Test Items | Test Conditions | Failure Judgement Criteria | Samples(n) Defective(c) |
|--------------------------------|--|---|----------------------------|
| Temperature cycle | 1 cycle $-40^{\circ}\text{C} \longleftrightarrow +100^{\circ}\text{C}$ (15min)(5min)(15min) 300 cycle test | $L_0 \leq L \times 0.8$ $L_{45} \leq L \times 0.8$ L: Lower specification limit | n=22,c=0 |
| High temperature test | Temp: $+100^{\circ}\text{C}$ Vcc:6V 1000hrs | | n=22,c=0 |
| Low temperature storage | Temp: -40°C 1000hrs | | n=22,c=0 |
| High temperature High humidity | Ta: 85°C ,RH:85% 1000hrs | | n=22,c=0 |
| Solder heat | Temp: $260 \pm 5^{\circ}\text{C}$ 10sec 4mm From the bottom of the package. | | n=22,c=0 |

产品规格咨询热线：梁 SR 18148584520（微信同号）

Packing Quantity

1500 pcs / Box
10 Boxes / Carton

Label Form Specification



CPN: Customer's Production Number

P/N : Production Number

QTY: Packing Quantity

CAT: Ranks

HUE: None

REF: Reference

LOT No: Lot Number

MADE IN TAIWAN: Production Place

Application Restrictions

1. Above specification may be changed without notice. EVERLIGHT will reserve authority on material change for above specification.
2. When using this product, please observe the absolute maximum ratings and the instructions for use outlined in these specification sheets. EVERLIGHT assumes no responsibility for any damage resulting from use of the product which does not comply with the absolute maximum ratings and the instructions included in these specification sheets.
3. These specification sheets include materials protected under copyright of EVERLIGHT. Reproduction in any form is prohibited without the specific consent of EVERLIGHT.

单击下面可查看定价，库存，交付和生命周期等信息

[>>Everlight \(亿光\)](#)