

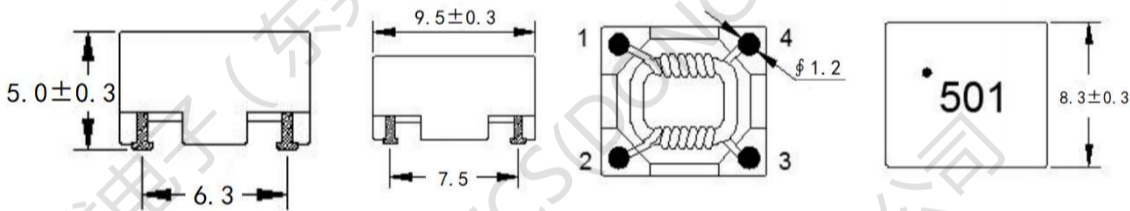
SMD Common Mode Line Filter

FC-SLF1050 –Series

Low profile, only 5.3max
 High Impedance up to: 1000 Ω
 Current Capabilit up to 5.0A
 Operating temperature : -40° C to +125° C
 Rated voltage 80 Vdc / 42 Vac



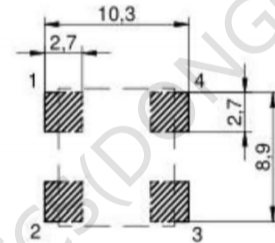
1. Dimensions:mm



2.Schematic:

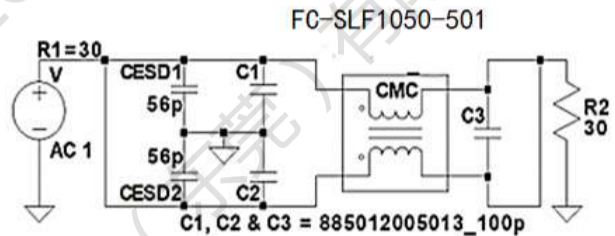
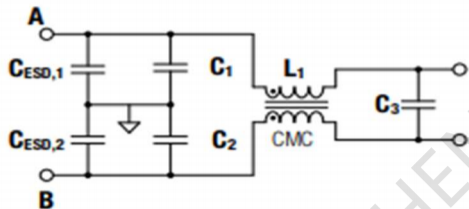


3.LAYOUT RECOMMENDATION:(mm)



Land Pattern

4.Application Fig:





方成电子（东莞）有限公司

FC-SLF1050 -Series SMD Common Mode Line Filter

5. ELECTRIC CHARACTERICS

Part Number	Common mode Impedance (Ω) 100MHz	Inductance (uH) typ	LK (uH) Typ. (2-3 short)	RDC (m Ω)	Current Rating (A)
				1-4 2-3	
FC-SLF1050-501-LF	500 \pm 25%	5.0	0.57	5.5	5.0
FC-SLF1050-801-LF	800 \pm 25%	9.0	0.97	11	3.5
FC-SLF1050-102-LF	1000 \pm 25%	11.0	1.3	30	2.5
FC-SLF1050-222-LF	2200 \pm 25%	30.0	3.5	60	1.4

Electrical Specifications @ 25°C — Operating Temperature -40°C to +125°C.

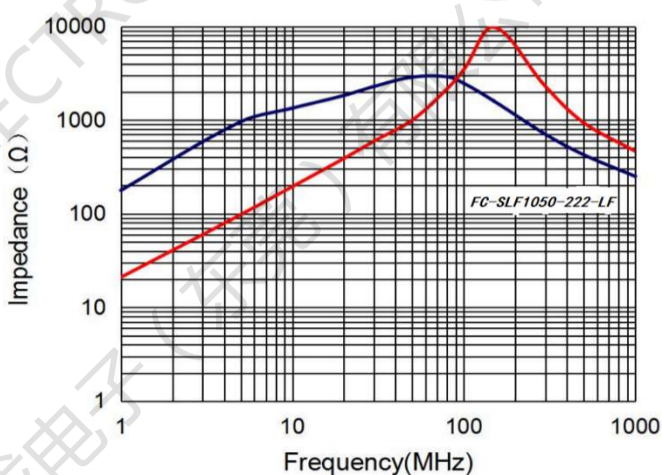
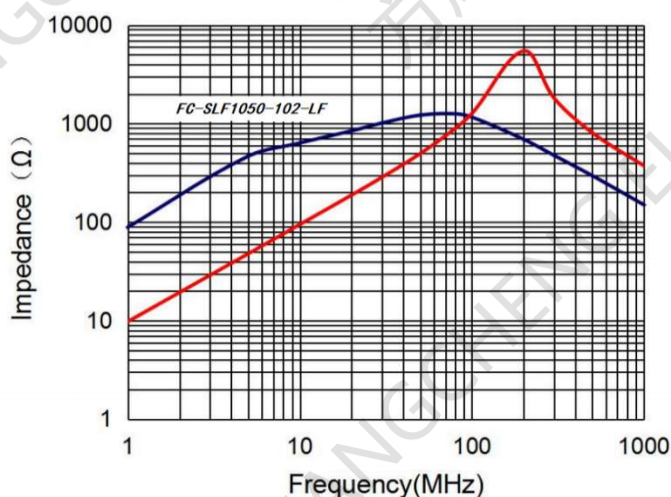
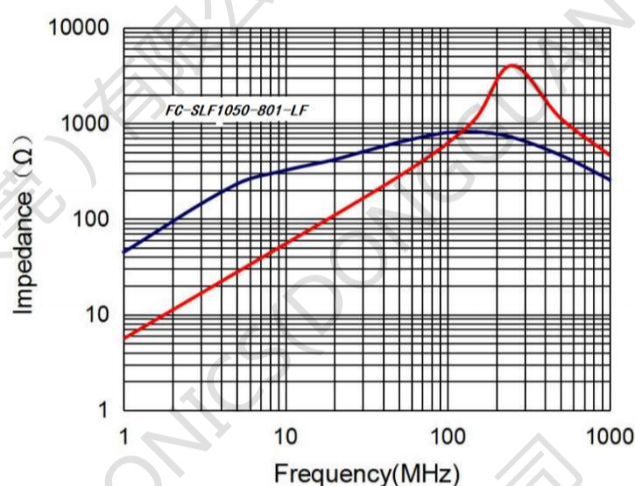
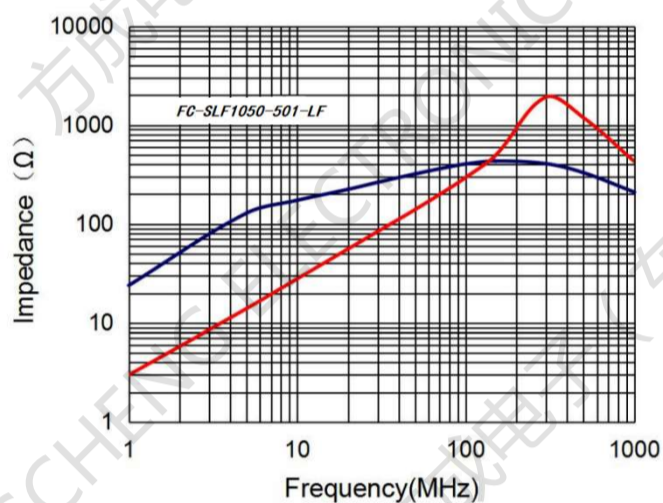
Test equipment : Inductance 100KHZ/0.1V

Rated voltage 80 Vdc / 42 Vac

Hi-Pot (N-N) : 250 Vac / 60 Hz , 3 mA / 1sec

6. Impedance. vs Frequency Insertion loss VS. Frequency:

— Frequency
— Impedance



单击下面可查看定价，库存，交付和生命周期等信息

[>>FC\(方成\)](#)