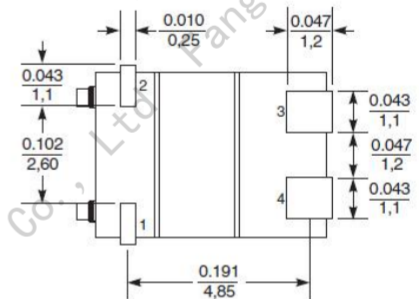
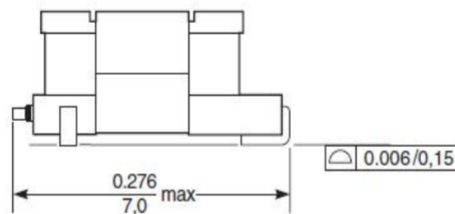
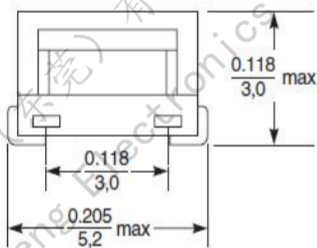


## FC-SCT 4.6 –Series Current Sense Transformers

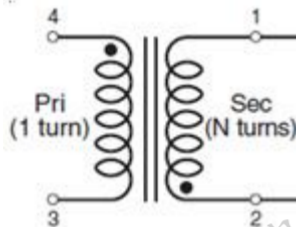
- AEC-Q200 Grade 1 qualified (-40°C to +125°C ambient)
- Small surface mount current sensors
- Sensed current up to 20 A; Frequency range up to 1 MHz
- Very low primary DC resistance
- 1500 Vrms, one minute isolation (hipot) between windings
- Can also be used in 48 V vehicle electrical systems



### 1. Dimensions:mm

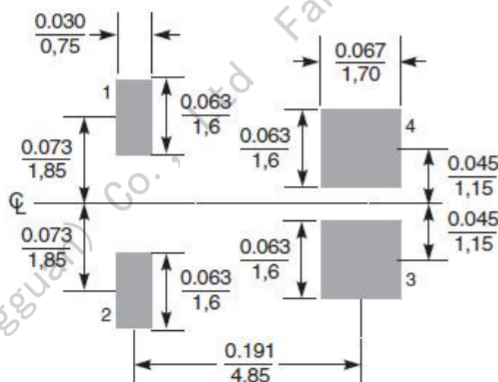


### 2.Schematic:

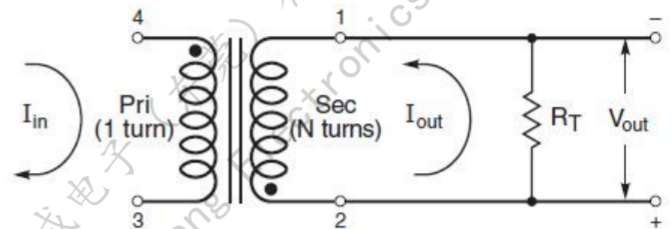


FC-SCT4. 6-20A-Series current sense transformers

### 3. Recommended Land Pattern



### 4. Typical Circuit



5. ELECTRIC CHARACTERICS)

**Electrical Specifications @ 25°C — Operating Temperature -40°C to +125°C**

Part Number	Turns Ration	Current Rating <sub>2 NP</sub> (A)	Secondary Inductance (mH MIN)	DCR (Ω typ)		Hipot (VDC)
				Primary (4-3)	Secondary (1-2)	Np-Ns
FC-SCT4.6-1:20	1:20	20	0.053	0.0015	0.42	1500V
FC- SCT4.6-1:50	1:50	20	0.333	0.0015	2.76	1500V
FC- SCT4.6-1:70	1:70	20	0.652	0.0015	5.04	1500V
FC- SCT4.6-1:100	1:100	20	1.330	0.0015	10.68	1500V
FC- SCT4.6-1:150	1:150	20	2.993	0.0015	22.3	1500V

Inductance measured between secondary pins at 100 kHz, 0.1 Vrms,

Core material Ferrite

Terminations RoHS compliant tin-silver over tin over nickel over phos bronze

Weight 0.16 g

Ambient temperature -40°C to +125°C

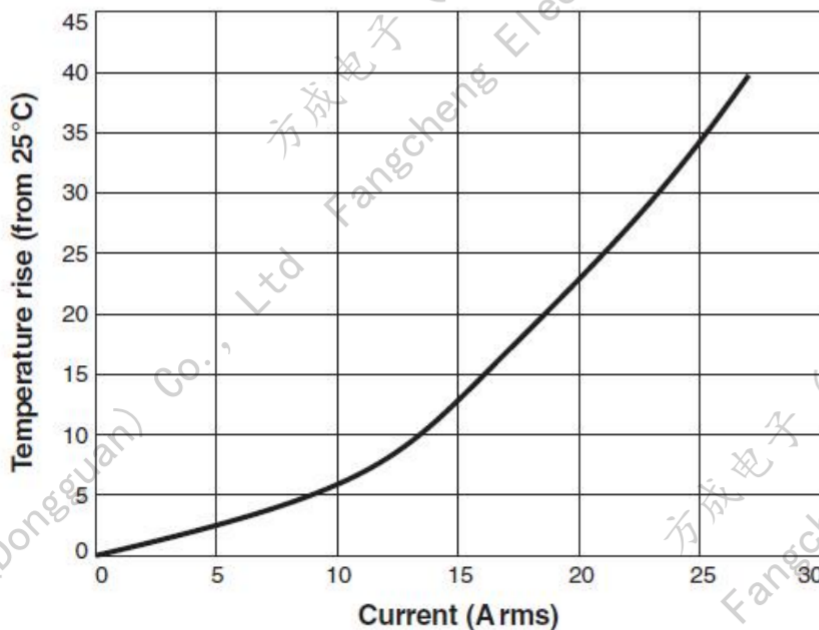
Maximum part temperature +165°C (ambient + temp rise)

Storage temperature Component: -40°C to +125°C. Tape and reel packaging: -40°C to +80°C

Resistance to soldering heat Max three 40 second reflows at +260°C, parts cooled to room temperature between cycles

Moisture Sensitivity Level (MSL) 1 (unlimited floor life at <30°C / 85% relative humidit

6. Temperature Rise vs Current



单击下面可查看定价，库存，交付和生命周期等信息

[>>FC\(方成\)](#)