



# PS-D 系列功率电感 PS-D Series SMD Power Inductors



## 特征 FEATURES

- 超薄
- 屏蔽结构
- 适合于表面贴装,适合于回流焊
- Low profile
- Magnetic shielded
- SMT type, suitable for solder reflow

## 应用 APPLICATIONS

- 移动通信,笔记本电脑
- DC/DC 转换
- Portable communication equipment, Notebook Computer
- DC/DC converters

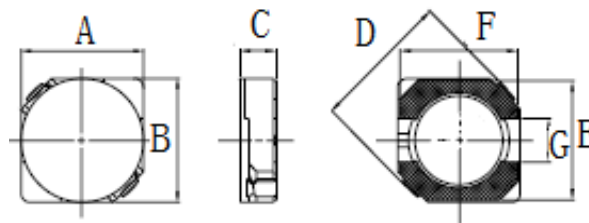
## 产品规格型号表示方法 ORDERING CODE

PS	5D28	—	150	M	T
①	②		③	④	⑤

① 产品代号 Code		② 规格尺寸 Dimensions (L×W×T) (mm)		③ 感量(μH) Inductance		④ 误差 Tolerance		⑤ 包装方式 Packaging Style	
PS-D	PS-D 系列 功率电感	2D09	3.0×3.0×0.9	1R0	1	M	±20%	T	Tape&Reel
		2D11	3.0×3.0×1.1	100	10	N	±30%	B	Blku
		2D14	3.0×3.0×1.4	101	100				
		2D18	3.0×3.0×1.8						
		3D18	3.8×3.8×1.8						
		3D28	3.8×3.8×2.8						
		4D18	4.7×4.7×1.8						
		4D28	4.7×4.7×2.8						
		5D18	5.7×5.7×1.8						
		5D28	5.7×5.7×2.8						
		6D28	6.7×6.7×2.8						
		6D38	6.7×6.7×3.8						
		8D28	8.0×8.0×2.8						
		8D38	8.0×8.0×3.8						
		8D43	8.0×8.0×4.3						

## 外形尺寸 Dimensions

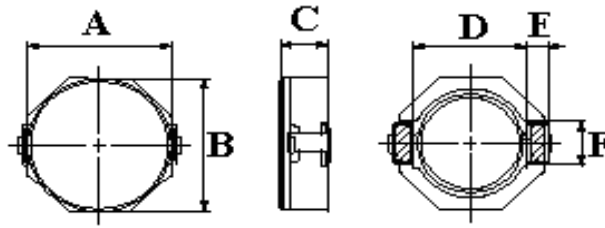
单位(Unit): mm



型号 Part	A	B	C	D	E	F	G
2D09	3.0±0.2	3.0±0.2	0.9±0.2	3.7±0.3	3.0	3.0	1.0
2D11	3.0±0.2	3.0±0.2	1.1±0.2	3.7±0.3	3.0	3.0	1.0
2D14	3.0±0.2	3.0±0.2	1.55±0.2	3.7±0.3	3.0	3.0	1.0
2D18	3.0±0.2	3.0±0.2	1.8±0.2	3.7±0.3	3.0	3.0	1.0
3D18	3.8±0.2	3.8±0.2	1.8±0.2	4.8±0.3	3.8	3.8	1.2
3D28	3.8±0.2	3.8±0.2	2.8±0.2	4.8±0.3	3.8	3.8	1.2
4D18	4.7±0.3	4.7±0.3	1.8±0.2	6.6±0.3	4.7	4.7	1.5
4D28	4.7±0.3	4.7±0.3	2.8±0.2	6.6±0.3	4.7	4.7	1.5
5D18	5.7±0.3	5.7±0.3	1.8±0.2	7.2±0.3	5.7	5.7	2.0
5D28	5.7±0.3	5.7±0.3	2.8±0.2	7.2±0.3	5.7	5.7	2.0
6D28	6.7±0.3	6.7±0.3	2.8±0.2	9.0±0.3	6.7	6.7	2.0



6D38	6.7±0.3	6.7±0.3	3.8±0.2	9.0±0.3	6.7	6.7	2.0
------	---------	---------	---------	---------	-----	-----	-----



型号 Part	A	B	C	D	E	F
PS8D28	8.0±0.3	8.0±0.3	2.8±0.2	6.3	1.2	2.5
PS8D38	8.0±0.3	8.0±0.3	3.8±0.2	6.3	1.2	2.5
PS8D43	8.0±0.3	8.0±0.3	4.3±0.2	6.3	1.2	2.5

## 电性能参数 Electrical Characteristics

### PS2D09 Series

Part Number	Inductance (μH)	Tolerance	Test Freq.	DCR (Ω) Max	Isat(A)
PS2D09-1R0NT	1.0	±30%	100kHz	0.097	0.83
PS2D09-2R2NT	2.2	±30%	100kHz	0.143	0.58
PS2D09-4R7NT	4.7	±30%	100kHz	0.287	0.38
PS2D09-6R8NT	6.8	±30%	100kHz	0.365	0.34
PS2D09-8R2NT	8.2	±30%	100kHz	0.398	0.31
PS2D09-120MT	12	±20%	100kHz	0.618	0.27
PS2D09-180MT	18	±20%	100kHz	0.798	0.22
PS2D09-270MT	27	±20%	100kHz	2.16	0.16
PS2D09-390MT	39	±20%	100kHz	2.73	0.13
PS2D09-560MT	56	±20%	100kHz	3.35	0.10
PS2D09-820MT	82	±20%	100kHz	4.22	0.08
PS2D09-101MT	100	±20%	100kHz	4.78	0.07

### PS2D11 Series

Part Number	Inductance (μH)	Tolerance	Test Freq.	DCR (Ω) Max	Isat(A)
PS2D11-1R0NT	1.0	±30%	100kHz	0.0626	1.50
PS2D11-1R5NT	1.5	±30%	100kHz	0.0843	1.25
PS2D11-2R2NT	2.2	±30%	100kHz	0.0955	1.10
PS2D11-2R7NT	2.7	±30%	100kHz	0.120	0.92
PS2D11-3R3NT	3.3	±30%	100kHz	0.154	0.88
PS2D11-4R7NT	4.7	±30%	100kHz	0.168	0.70
PS2D11-5R6NT	5.6	±30%	100kHz	0.264	0.65
PS2D11-6R8NT	6.8	±30%	100kHz	0.284	0.60
PS2D11-8R2NT	8.2	±30%	100kHz	0.376	0.52
PS2D11-100MT	10	±20%	100kHz	0.428	0.48
PS2D11-150MT	15	±20%	100kHz	0.663	0.40



PS2D11-180MT	18	±20%	100kHz	0.730	0.36
PS2D11-220MT	22	±20%	100kHz	0.801	0.35

### PS2D14 Series

Part Number	Inductance (μH)	Tolerance	Test Freq.	DCR (Ω) Max	Isat(A)
PS2D14-1R0NT	1.0	±30%	100kHz	0.056	1.80
PS2D14-1R5NT	1.5	±30%	100kHz	0.063	1.75
PS2D14-2R2NT	2.2	±30%	100kHz	0.094	1.30
PS2D14-2R7NT	2.7	±30%	100kHz	0.106	1.15
PS2D14-3R3NT	3.3	±30%	100kHz	0.125	1.00
PS2D14-4R7NT	4.7	±30%	100kHz	0.169	0.70
PS2D14-5R6NT	5.6	±30%	100kHz	0.188	0.65
PS2D14-6R8NT	6.8	±30%	100kHz	0.213	0.60
PS2D14-8R2NT	8.2	±30%	100kHz	0.281	0.55
PS2D14-100MT	10	±20%	100kHz	0.294	0.30
PS2D14-120MT	12	±20%	100kHz	0.394	0.25

### PS2D18 Series

Part Number	Inductance (μH)	Tolerance	Test Freq.	DCR (Ω) Max	Isat(A)
PS2D18-2R2NT	2.2	±30%	100kHz	0.041	0.85
PS2D18-3R3NT	3.3	±30%	100kHz	0.054	0.75
PS2D18-4R7NT	4.7	±30%	100kHz	0.078	0.63
PS2D18-6R8NT	6.8	±30%	100kHz	0.115	0.52
PS2D18-100MT	10	±20%	100kHz	0.180	0.43
PS2D18-150MT	15	±20%	100kHz	0.220	0.35
PS2D18-220MT	22	±20%	100kHz	0.363	0.30
PS2D18-330MT	33	±20%	100kHz	0.516	0.24
PS2D18-470MT	47	±20%	100kHz	0.750	0.20

### PS3D18 Series

Part Number	Inductance (μH)	Tolerance	Test Freq.	DCR (Ω) Max	Isat(A)
PS3D18-1R0NT	1.0	±30%	100kHz	0.050	2.0
PS3D18-1R5NT	1.5	±30%	100kHz	0.055	1.8
PS3D18-2R2NT	2.2	±30%	100kHz	0.063	1.3
PS3D18-3R3NT	3.3	±30%	100kHz	0.069	1.2
PS3D18-4R7NT	4.7	±30%	100kHz	0.107	0.8
PS3D18-100MT	10	±20%	100kHz	0.205	0.7
PS3D18-220MT	22	±20%	100kHz	0.420	0.65
PS3D18-330MT	33	±20%	100kHz	0.760	0.38
PS3D18-221MT	220	±20%	100kHz	3.800	0.10

### PS4D18 Series

Part Number	Inductance	Tolerance	Test Freq.	DCR (Ω)	Isat(A)
-------------	------------	-----------	------------	---------	---------



	( $\mu\text{H}$ )			Max	
PS4D18-1R2NT	1.2	$\pm 30\%$	100kHz	0.045	1.72
PS4D18-2R2NT	2.2	$\pm 30\%$	100kHz	0.075	1.32
PS4D18-4R7NT	4.7	$\pm 30\%$	100kHz	0.090	0.85
PS4D18-6R8NT	6.8	$\pm 30\%$	100kHz	0.160	0.76
PS4D18-100MT	10	$\pm 20\%$	100kHz	0.200	0.61
PS4D18-120MT	12	$\pm 20\%$	100kHz	0.210	0.56
PS4D18-150MT	15	$\pm 20\%$	100kHz	0.240	0.50
PS4D18-180MT	18	$\pm 20\%$	100kHz	0.338	0.48
PS4D18-220MT	22	$\pm 20\%$	100kHz	0.397	0.41

### PS4D28 Series

Part Number	Inductance ( $\mu\text{H}$ )	Tolerance	Test Freq.	DCR ( $\Omega$ ) Max	Isat(A)
PS4D28-2R2NT	2.2	$\pm 30\%$	100kHz	0.045	2.04
PS4D28-4R7NT	4.7	$\pm 30\%$	100kHz	0.072	1.32
PS4D28-100MT	10	$\pm 20\%$	100kHz	0.128	1.00
PS4D28-200MT	20	$\pm 20\%$	100kHz	0.235	0.70
PS4D28-471MT	470	$\pm 20\%$	100kHz	4.400	0.20

### PS5D18 Series

Part Number	Inductance ( $\mu\text{H}$ )	Tolerance	Test Freq.	DCR ( $\Omega$ ) Max	Isat(A)
PS5D18-4R1NT	4.1	$\pm 30\%$	10kHz	0.057	1.95
PS5D18-6R8NT	6.8	$\pm 30\%$	10kHz	0.095	1.42
PS5D18-220MT	22	$\pm 20\%$	10kHz	0.290	0.80
PS5D18-470MT	47	$\pm 20\%$	10kHz	0.595	0.54
PS5D18-820MT	82	$\pm 20\%$	10kHz	0.978	0.41

### PS5D28 Series

Part Number	Inductance ( $\mu\text{H}$ )	Tolerance	Test Freq.	DCR ( $\Omega$ ) Max	Isat(A)
PS5D28-2R2NT	2.2	$\pm 30\%$	10kHz	0.036	2.10
PS5D28-4R7NT	4.7	$\pm 30\%$	10kHz	0.035	1.00
PS5D28-6R2NT	6.2	$\pm 30\%$	10kHz	0.045	1.80
PS5D28-6R8NT	6.8	$\pm 30\%$	10kHz	0.047	1.75
PS5D28-100MT	10	$\pm 20\%$	10kHz	0.067	1.20
PS5D28-150MT	15	$\pm 20\%$	10kHz	0.103	1.10
PS5D28-220MT	22	$\pm 20\%$	10kHz	0.122	0.90
PS5D28-101MT	100	$\pm 20\%$	10kHz	0.520	0.51

### PS6D28 Series

Part Number	Inductance ( $\mu\text{H}$ )	Tolerance	Test Freq.	DCR ( $\Omega$ ) Max	Isat(A)
PS6D28-4R7NT	4.7	$\pm 30\%$	10kHz	0.039	2.50
PS6D28-6R8NT	6.8	$\pm 30\%$	10kHz	0.054	2.10
PS6D28-8R2NT	8.2	$\pm 30\%$	10kHz	0.060	1.90
PS6D28-100MT	10	$\pm 20\%$	10kHz	0.065	1.70
PS6D28-180MT	18	$\pm 20\%$	10kHz	0.095	1.32
PS6D28-101MT	100	$\pm 20\%$	10kHz	0.535	0.54
PS6D28-331MT	330	$\pm 20\%$	10kHz	0.535	0.54



## PS6D38 Series

Part Number	Inductance (μH)	Tolerance	Test Freq.	DCR (Ω) Max	Isat(A)
PS6D38-1R0NT	1.0	±30%	10kHz	0.015	4.50
PS6D38-1R5NT	1.5	±30%	10kHz	0.017	4.20
PS6D38-2R2NT	2.2	±30%	10kHz	0.019	4.00
PS6D38-3R3NT	3.3	±30%	10kHz	0.020	3.50
PS6D38-4R7NT	4.7	±30%	10kHz	0.032	2.80
PS6D38-6R8NT	6.8	±30%	10kHz	0.034	2.50
PS6D38-7R3NT	7.3	±30%	10kHz	0.039	2.10
PS6D38-100MT	10	±20%	10kHz	0.048	2.00
PS6D38-120MT	12	±20%	10kHz	0.053	1.70
PS6D38-150MT	15	±20%	10kHz	0.057	1.60
PS6D38-180MT	18	±20%	10kHz	0.092	1.50
PS6D38-220MT	22	±20%	10kHz	0.096	1.30
PS6D38-270MT	27	±20%	10kHz	0.109	1.20
PS6D38-330MT	33	±20%	10kHz	0.124	1.10
PS6D38-390MT	39	±20%	10kHz	0.138	1.00
PS6D38-470MT	47	±20%	10kHz	0.155	0.95
PS6D38-560MT	56	±20%	10kHz	0.202	0.85
PS6D38-680MT	68	±20%	10kHz	0.234	0.75
PS6D38-820MT	82	±20%	10kHz	0.324	0.70
PS6D38-101MT	100	±20%	10kHz	0.358	0.65

## PS8D28 Series

Part Number	Inductance (μH)	Tolerance	Test Freq.	DCR (Ω) Max	Isat(A)
PS8D28-3R3NT	3.3	±30%	100kHz	0.040	4.00
PS8D28-4R7NT	4.7	±30%	100kHz	0.048	3.80
PS8D28-150MT	15	±20%	100kHz	0.095	2.30

## PS8D38 Series

Part Number	Inductance (μH)	Tolerance	Test Freq.	DCR (Ω) Max	Isat(A)
PS8D38-3R3NT	3.3	±30%	100kHz	0.024	5.0
PS8D38-4R7NT	4.7	±30%	100kHz	0.029	4.8
PS8D38-100MT	10	±20%	100kHz	0.049	3.2
PS8D38-220MT	22	±20%	100kHz	0.105	2.3

## PS8D43 Series

Part Number	Inductance (μH)	Tolerance	Test Freq.	DCR (Ω) Max	Isat(A)
PS8D43-4R7NT	4.7	±30%	100kHz	0.027	4.80
PS8D43-150MT	15	±20%	100kHz	0.074	3.70
PS8D43-470MT	47	±20%	100kHz	0.175	1.50
PS8D43-680MT	68	±20%	100kHz	0.280	1.20
PS8D43-101MT	100	±20%	100kHz	0.430	1.00
PS8D43-331MT	330	±20%	100kHz	1.060	0.50

Isat: 饱和电流, 加 Isat 时, 电感量≤35%

Isat: Saturation Current, the current when the inductance becomes 35% lower than its initial value.

单击下面可查看定价，库存，交付和生命周期等信息

[>>FH\(风华高科\)](#)