

立式固定电感器
Type Color Code Inductors
◆特征
Feature

- * 体积小, 占用安装空间小, 适合自动安装的卷(编)带包装;

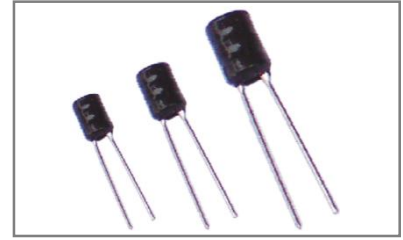
Small volume, small installation space, suitable for automatic installation of coil (ribbon) packaging;

- * 分布电容小; 自共振频率高特殊导针结构, 不易产生开路现象。

Small distributed capacitance; The special guide pin structure with high self resonance frequency is not easy to produce open circuit.

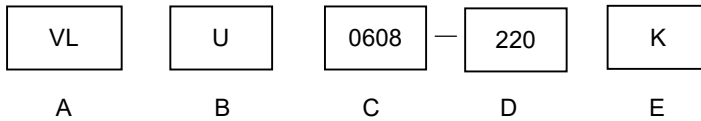
- * 工业生产标准尺寸及多种脚型产品。

Standard size, various lead configuration.


◆应用
Application

- * 一般用途品

General purpose goods

◆型号表示法
Part Number


A:

产品类别 Product Type	
代号 Code	类别 Type
VL	立式固定电感器 Vertical fixed inductor

B:

封装形式	
Envelopment configuration	
U	UL 套管 UL sleeve
P	磁屏蔽 Magnetic shielding
空格	无封装 NO Encapsulation

C:

本体尺寸代码		
Nominal Body Size Code		
类型	外径	体长
Type	Dmax (mm)	Lmax (mm)
0406	5.5	9.0
0608	8.0	12.0
0810	10.0	12.5
0912	11.0	14.5
1012	12.5	14.5

D:

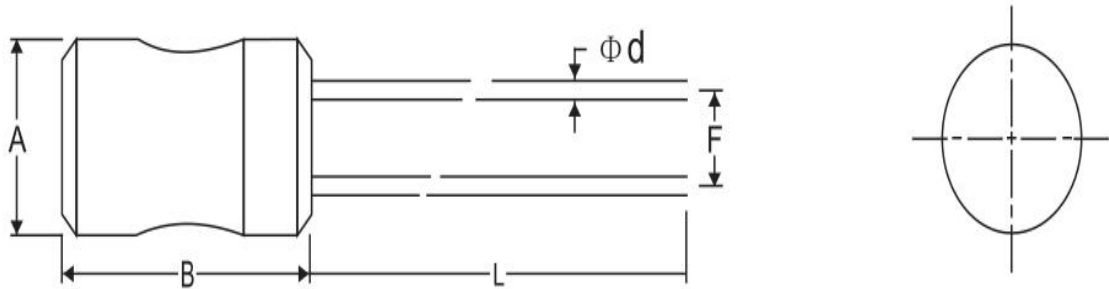
E:

标称电感量 Nominal Inductance(μH)
前两位数字为有效数字, 后一位数字表示零的个数 First two digits are signify cant and the thirddigit is number of zeros .例如: For example:
101=100 μH
5R6=5.6 μH
R22=0.22 μH

感量偏差 Tolerance	
J	$\pm 5\%$
K	$\pm 10\%$
M	$\pm 20\%$

◆外型尺寸

Size code,



类型 Yype	尺寸 Dimensions(mm)				
	A(Max)	B(Max)	L	ΦD	F
0406	5.5	8.5	15 \pm 2	0.5 \pm 0.1	2.0 \pm 0.5
0507	6.5	9.0	15 \pm 2	0.5 \pm 0.1	2.5 \pm 0.5
0608	8.0	11.0	15 \pm 2	0.6 \pm 0.1	3.0 \pm 0.5
0810	10.0	12.5	15 \pm 2	0.6/0.65 \pm 0.1	5.0 \pm 0.5
0912	11.0	14.5	15 \pm 2	0.65/0.8 \pm 0.1	5.0 \pm 0.5
1010	12.0	12.5	15 \pm 2	0.8 \pm 0.1	5.0 \pm 0.5
1012	12.0	14.5	15 \pm 2	0.8 \pm 0.1	5.0 \pm 0.5
1215	14.5	16.5	15 \pm 2	0.8 \pm 0.1	7.5 \pm 0.5
1415	16.5	17.0	15 \pm 2	0.8 \pm 0.1	7.5 \pm 0.5

#特殊要求的产品可以根据客户要求生产

The products can be customized according to customer requirement

◆电性能参数及测试条件
Electrical Characteristics&Test Conditions

型号 Part Number	电感量 L (μH)	公差 Tolerance	测试频率 Test Freq	直流电阻 DCR (Ω) Max	Lsat (A)
0406	1.0-1000	J/K/M	1KHZ 1.0V	0.025-9.0	0.15-2.0
0507	1.0-2000	J/K/M	1KHZ 1.0V	0.03-10.0	0.18-2.0
0608	1.0-10000	J/K/M	1KHZ 1.0V	0.015-40.0	0.04-2.0
0810	1.0-10000	J/K/M	1KHZ 1.0V	0.013-19.0	0.1-8.5
0912	1.0-15000	J/K/M	1KHZ 1.0V	0.015-17.5	0.1-5.2
1010	1.0-6800	J/K/M	1KHZ 1.0V	0.0165-9.8	0.2-6.1
1212	1.0-2200	J/K/M	1KHZ 1.0V	0.02-3.5	0.35-5.5
1215	10-2200	J/K/M	1KHZ 1.0V	0.025-2.5	0.7-9.8
1415	22-330	J/K/M	1KHZ 1.0V	0.13-5.2	1.0-8.0

#特殊要求的产品可以根据客户要求生产

The products can be customized according to customer requirement

◆可靠性测试方法

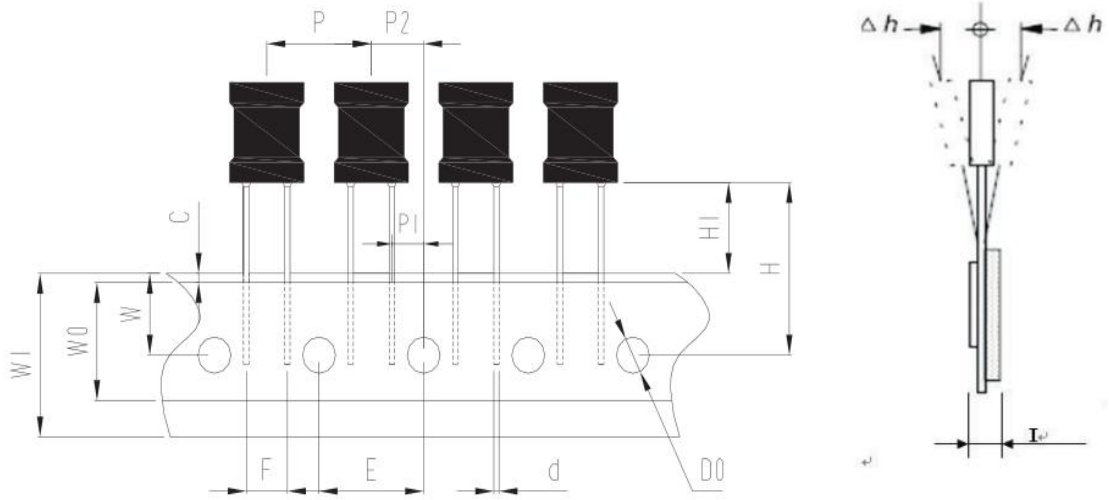
Reliability Test Method

组别 Group	试验项目 Test items	试验方法 test method	判定标准 Criteria
1	1.1 外观 appearance	目测 Visual inspection	符合产品标准要求 Meet the requirements of product standards
	1.2 尺寸 size	用精度不少于 0.02mm 的量具测量。 Measure with a measuring tool with an accuracy of no less than 0.02mm.	
	1.3 电性能 Electrical performance	由相应的测试仪进行测试 Test with the appropriate tester	
2	2.1 叠加电流 Superimposed current	施加规格书中规定的电流（若无叠加电流要求则无需试验）Apply the current specified in the specification (no test is required if there is no superimposed current requirement)	变化符合承认书中规定的要求 Changes meet the requirements specified in the letter of recognition
	2.2 可焊性 Weldability	焊锡温度：255℃±5℃ Solder temperature: 255 °C ± 5 °C 浸渍时间：2.5s±0.5s Immersion time: 2.5s ± 0.5s	上锡率≥95% Tinning rate ≥ 95%
	2.3 恒定湿热 Steady damp-heat	试验温度：40℃±2℃； 试验湿度：(90%~95%)RH 试验时间：500 h±2 h 恢复时间：24 h±2 h Test temperature: 40 °C ± 2 °C； Test humidity: (90%~95%) RH Test time: 500 h ± 2 h Recovery time: 24 h ± 2 h	外观无明显损伤， -10%≤ΔL/L≤10% There is no obvious damage to the appearance, -10%≤ΔL/L≤10%
	2.4 引出端强度 Terminal tensile strength	拉力计 tensimeter	①磁芯外径>5mm: ≥3.0Kg ②磁芯外径≤5mm: ≥2.0Kg ① Outer diameter of magnetic core > 5mm: ≥ 3.0Kg ② Outer diameter of magnetic core ≤ 5mm: ≥ 2.0Kg
	2.5 跌落 drop	1m 高度自由落下水泥地，3 次 Free fall on the cement floor at a height of 1m, twice	外观无明显损伤，产品电气性能符合要求 There is no obvious damage to the appearance, and the electrical performance of the product meets the requirements
	2.6 耐焊接热 Resistance to welding heat	焊锡温度：350℃±5℃ Solder temperature: 350 °C ± 5 °C 浸渍深度：10mm Immersion depth: 10mm	外观无明显损伤， There is no obvious damage to the appearance, 10%≤ΔL/L≤10%

		浸渍时间: 3s±0.5s。 Immersion time: 3s ± 0.5s.	
2.7	温度冲击 Temperature shock	阶段 1: +105℃/30min Phase 1: +105 °C/30min 阶段 2: -25℃/30min Stage 2: - 25 °C/30min 转换时间<5min, 循环次数: 100 次 Conversion time < 5min, number of cycles: 100 恢复时间: 2 h Recovery time: 2 h	外观无明显损伤, There is no obvious damage to the appearance, $10\% \leq \Delta L/L \leq 10\%$
2.8	工作寿命 working life	温试验度: 85℃±2℃, 施加额定电流 Temperature test degree: 85 °C ± 2 °C, apply rated current 试验时间: 1000 h Test time: 1000 h 恢复时间: 24 h±2 h Recovery time: 24 h ± 2 h	
2.9	耐高温 High temperature resistance	温试验度: +125℃±2℃ Temperature test degree: +125 °C ± 2 °C 试验时间: 1000 h Test time: 1000 h 恢复时间: 24 h±2 h Recovery time: 2 h	
2.10	耐低温 Low temperature resistance	温试验度: -40℃±2℃ Temperature test degree: - 25 °C ± 2 °C 试验时间: 96 h Test time: 96 h 恢复时间: 2 h Recovery time: 2 h	
2.11	振动 Vibration	振动频率: 10Hz~55Hz 全振幅: 1.5mm 水平、垂直方向各 2h Vibration frequency: 10Hz~55Hz Full amplitude: 1.5mm 2h in horizontal and vertical directions respectively	

◆包装方式&数量

Packaging Style Style&Quantity



代号 Code	P	E	P1	P2	d	Δh	W	W0	W1	C	H	H1	D0	I	F
尺寸 Dim.	12.7	12.7	3.85	6.35	0.6	0	9	13	18	2.0	20	10	4.0	1.5	5.0
误差 Tol.	1.0	0.3	0.7	0.4	0.1	1.0	1.0	1.0	1.0	Max	2.0	2.0	0.2	Max	0.5

* 包装数量单位

Packaging Quantity

单位: Unit: pcs

型号规格	包装方式 Packaging style		
	吸塑盘包装	散包装	盒带包装
0406	140	500PCS	2300
0507	140	500PCS	2000
0608	140	500PCS	1500
0810	110	200PCS	700
0912	110	200PCS	700
1010	104	200PCS	500
1012	104	200PCS	500
1215	112	100PCS	---
1415	80	100PCS	---

#可根据用户需求包装

Can be packaged according to user requirements

单击下面可查看定价，库存，交付和生命周期等信息

[>>FH\(风华高科\)](#)