

APPROVAL SPECIFICATIONS

Title. 拨动开关 _____

Product Model. SK22C02/102 _____

Customer's Part NO. _____

Customer's Model: _____

Customer's Approval Requested.

Please return this copy as a certification of your approval.

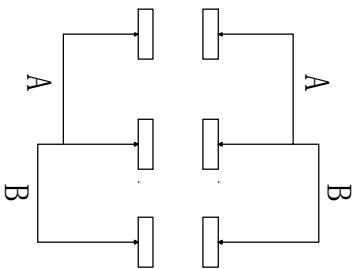
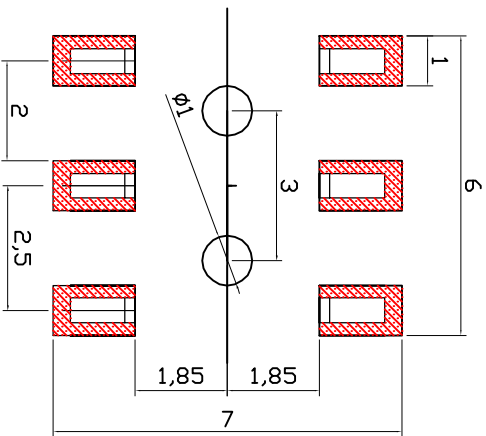
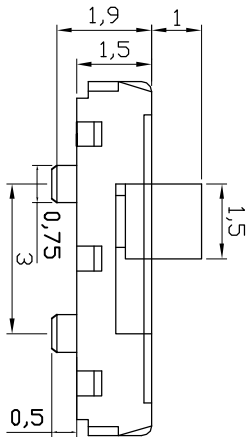
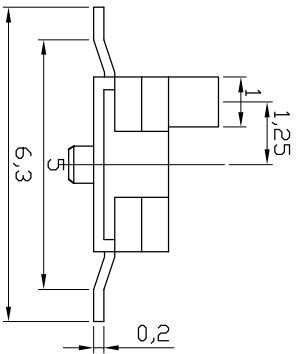
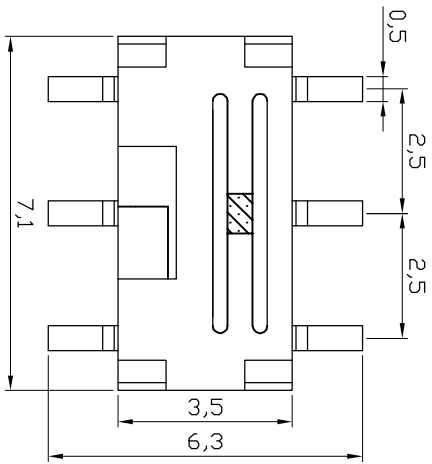
Checked by: _____ Date: _____

Approved by: _____ Date: _____

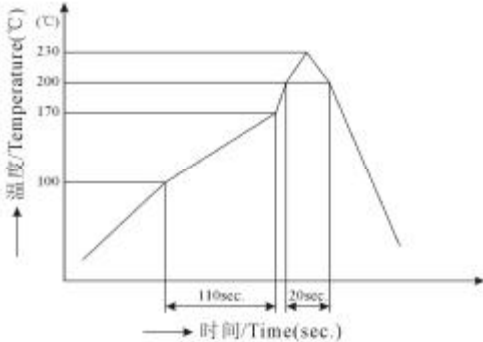
| | | |
|---------|--------|------|
| APPROVE | REVIEW | POLT |
| Jack Wu | 孙斌 | 徐明娥 |

Shenzhen Gangyuan Microkey Technology Co.,ltd

| | | | | | | | |
|----|------|----|--------|-------|--|-------------|---------------|
| 序号 | 名称 | 数量 | 材料 | 镀涂颜色 | | SK22C02/102 | 深圳市港源实业发展有限公司 |
| D | 接触簧片 | 2 | 铍青铜 | 银白色 | | | |
| C | 盖子 | 1 | 不锈钢 | 灰色 | | | |
| B | 底座 | 1 | 进口增强尼龙 | 黑色与镀银 | | | |
| A | 推柄 | 1 | 进口增强尼龙 | 黑色 | | | |



| | | | |
|--|--|--|--|
| 深圳市港源实业发展有限公司 | | 文件编号 | |
| | | 发布日期 | 2009年6月14日 |
| SPECIFICATION 规格书 | | 第2版 | 1 of 2 |
| 产品名称: 拨动开关 产品型号 SK22C02/102 | | | |
| DRAW 制定 | 刘明玲 | APPD.审批 | 颜怀亮 |
| 1. RATING(额定值): DC 12V 50mA | | | |
| 2. ELECTRICAL CHARACTERISTICS(电气性能规格): | | | |
| ITEM 项目 | | TEST CONDITIONS 测试条件 | PERFORMANCE 规格 |
| 2.1 | CONTACT RESISTANCE 接触电阻 | MEASURED AT SMALL CURRENT(100mA OR LESS) 在微小电流(100mA)以下测试. | 100mΩ MAX. 100 毫欧以下. |
| 2.2 | INSULATION RESISTANCE 绝缘电阻 | APPLY A VOLTAGE OF 100V DC FOR 1 MIN. TO FOLLOWING PORTIONS AFTER WHICH MEASUREMENT SHALL BE MADE. 1) BETWEEN BODY AND CONDUCTOR. 2) BETWEEN CONDUCTORS NOT TO BE CONTACT. 输入 100V DC 电压 1 分钟, 按以下接触方法测试: 1) 接触端子之间; 2) 胶座体与排脚之间. | 100MΩ MIN. 100 兆欧以上. |
| 2.3 | DIELECTRIC STRENGTH 耐电压 | AC 250V (50-60Hz) FOR 1 MIN TRIP CURRENT: 0.5mA 1) BETWEEN TERMINALS. 2) BETWEEN INDIVIDUAL TERMINALS AND FRAME. 输入 AC 250V(50-60Hz)电压, 1 分钟感度电流为 0.5mA, 按以下接触方法测试: 1) 排脚相互之间; 2) 排脚与外壳之间. | WITHOUT DAMAGE TO PARTS ARCING OR BREAKDOWN ETC. 没有绝缘破坏等异常. |
| 3. MECHANICAL CHARACTERISTICS(机械性能规格) | | | |
| ITEM 项目 | | TEST CONDITIONS 测试条件 | PERFORMANCE 规格 |
| 3.1 | OPERATING FORCE 动作力 | 横向推动 | 推动力度: 160gf ± 50gf |
| 3.2 | TERMINAL STRENGTH 端子强度 | A STATIC LOAD OF (500gf) SHALL BE APPLIED TO THE TIP OF THE TERMINAL FOR 1 MIN IN ANY DIRECTION. 在任意一个方向的先端加上(500gf)力度测试, 时间为 1 分钟. | ELECTRICAL CHARACTERISTICS SHALL BE SATISFIED WITHOUT DAMAGE OR EXCESSIVE LOOSENESS OF ACTUATOR 在端子中没有裂开, 松动等异常, 满足于机械, 电器性能. |
| 3.3 | STANDARD ATMOSPHEIC CONDITIONS 测试标准状态 | UNLESS OTHERWISE SPECIFIED. THE STANDARD RANGE OF ATMOSPHERIC CONDITIONS FOR MAKING MEASUREMENTS AND TESTS ARE AS FOLLOWS: 1) AMBIENT TEMPERATURE: 5°C TO 35°C 2) RELATIVE HUMIDITY: 45% TO 85% 3) AIR PRESSURE: 80Kpa~106Kpa. 在没有指定的情况下测试温度,湿度,气压如下: 1) 温度为 5°C~35°C; 2) 湿度为 45%~85%; 3) 气压为 80Kpa~106Kpa. | |

| | | | |
|---------------------|---------------------------------------|--|--|
| 深圳市港源实业发展有限公司 | | 文件编号 | |
| | | 发布日期 | 2009年6月14日 |
| SPECIFICATION 规格书 | | 第2版 | 2 of 2 |
| 3.4 | PRACTICAL TEMPERATURE RANGE 使用温度范围 | -16°C~+60°C. 在-16°C~+60°C温度内使用. | |
| 4. DURABILITY(耐久性): | | | |
| ITEM 项目 | | TEST CONDITIONS 测试条件 | PERFORMANCE 规格 |
| 4.1 | LIFE TEST 寿命试验 | WITHOUT LOAD: AN ACTUATOR SHALL BE SUBJECT TO 10,000 CYCLES AT A SPEED OF 60 CYCLES FOR 1 MIN. 无负荷: 操作者以每分钟 60 次的频率作 10,000 回之无负荷测试. | 1) CONTACT RESISTANCE SHALL BE 200mΩ MAX. 2) MECHANICAL AND ELECTRICAL CHARACTERISTICS SHALL BE SATISFIED. 1) 接触电阻不能超过于 200mΩ 2) 其它满足于机械, 电气性能. |
| 4.2 | HEAT TEST 耐热试验 | THE SWITCH SHALL BE STORED AT A TEMPERATURE OF 85±2°C FOR 96 HOURS. AND THEN IT SHALL BE SUBJECTED TO THE CONTROLLED RECOVERY CONDITIONS FOR 1 HOUR AFTER WHICH MEASUREMENT SHALL BE MADE. 放置在温度 85±2°C 中 96 小时后,再放置正常室温中 1 小时后测定. | THERE SHALL BE NO DAMAGE ON APPEARANGE. MECHANICAL AND ELECTRICAL CHARACTERISTICS SHALL BE SATISFIED. 外观无异常, 满足于机械, 电气性能. |
| 4.3 | COLD TEST 耐冷试验 | THE SWITCH SHALL BE STORED AT A TEMPERATURE OF -25±3°C FOR 96 HOURS. AND THEN IT SHALL BE SUBJECTED TO THE CONTROLLED RECOVERY CONDITIONS FOR 1 HOUR AFTER WHICH MEASUREMENT SHALL BE MADE. 放置在温度 -25±3°C 中 96 小时后,再放置正常室温中 1 小时后测定. | THERE SHALL BE NO DEFORMATION OR CRACKS IN MOLDED PART. 外观无异常, 满足于机械, 电气性能. |
| 4.4 | HUMIDITY TEST 潮湿试验 | THE SWITCH SHALL BE STORED AT A TEMPERATURE OF 40±2°C AND A HUMIDITY OF 90% TO 96% FOR 96 HOURS. THEN THE SWITCH SHALL BE MAINTAINED AT STANDARD ATMOSPHERIC CONDITIONS FOR 1 HOUR FOR OTHER PROCEDURES BE MADE. 放置在 40±2°C 相对湿度为 90~96% 环境中 96 小时后, 再将样品放在正常环境中 1 小时后进行测定. | 外观无异常, 满足于机械, 电气性能. |
| 4.5 | SOLDERING CONDITIONS 焊锡条件 | HAND SOLDERING 手焊: 1) DVICE 工具: SOLDER IRON 电烙铁. A. 350°C Max. 3sec Max. B. 270°C Max. 5sec Max. 2) REFLOW SOLDERING 回流焊: 250  | THERE SHALL BE NO DEFORMATION OR CRACKS IN MOLDED PART. 外观无异常, 满足于机械, 电气性能. |

单击下面可查看定价，库存，交付和生命周期等信息

[>>Gangyuan\(港源\)](#)