

#### DESCRIPTION

The GLF1201 is an advanced technology fully integrated I<sub>Q</sub>Smart™ load switch device with True Reverse Current Blocking (TRCB) technology and the slew rate control of the output voltage.

The GLF1201 offers industry leading True Reverse Current Blocking (TRCB) performance, featuring an ultra-low threshold voltage. It minimizes reverse current flow in the event that the V<sub>OUT</sub> pin voltage exceeds the V<sub>IN</sub> voltage.

The GLF1201 integrated slew rate control can also enhance system reliability by mitigating bus voltage swings during switching events. Where uncontrolled switches can generate high inrush currents that result in voltage droop and/or bus reset events, the GLF slew rate control specifically limits inrush currents during turn-on to minimize voltage droop.

The GLF1201 load switch device supports an industry leading wide input voltage range and helps to improve operating life and system robustness. Furthermore, one device can be used in multiple voltage rail applications which helps to simplify inventory management and reduces operating cost.

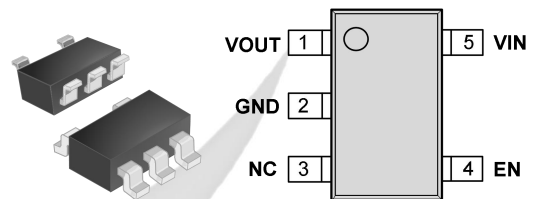
#### FEATURES

- True Reverse Current Blocking
- Ultra-Low I<sub>Q</sub>: 0.47 uA Typ @ 5.5 V<sub>IN</sub>
- Ultra-Low I<sub>SD</sub>: 26 nA Typ @ 5.5 V<sub>IN</sub>
- Low R<sub>ON</sub> : 54 mΩ Typ @ 5.5 V<sub>IN</sub>
- I<sub>OUT</sub> Max: 2 A
- Wide Input Range: 1.5 V to 5.5 V  
6 V abs max
- Controlled Rise Time: 600 us at 3.3V<sub>IN</sub>
- Internal EN Pull-Down Resistor on
- Integrated Output Discharge Switch:
- HBM: 4 kV, CDM: 2 kV

#### APPLICATIONS

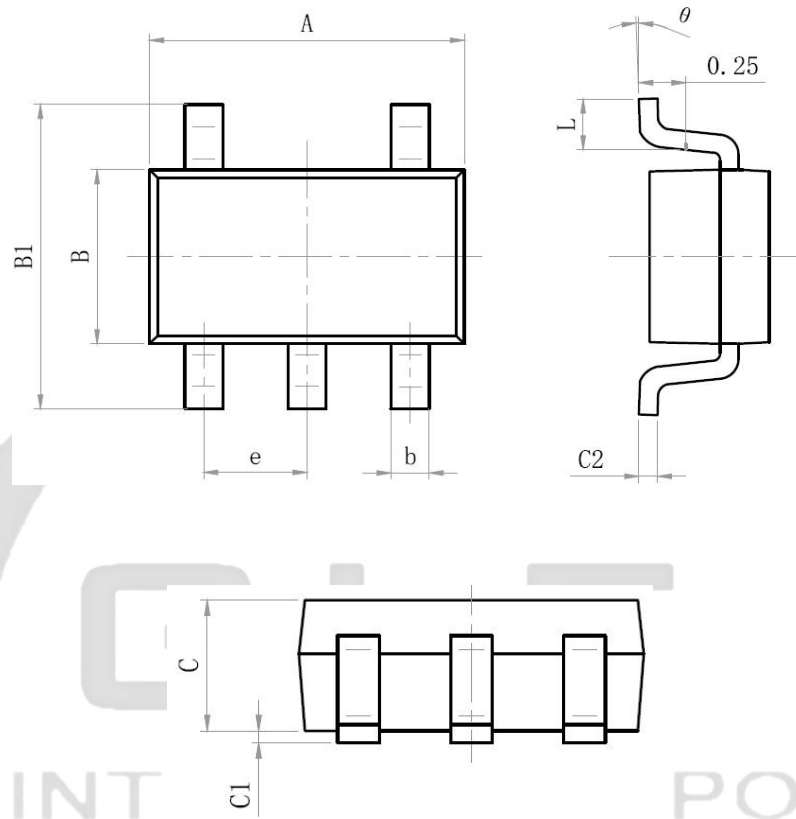
- Low Power Subsystem
- Telecommunication Module
- Mobile Devices

#### PACKAGE



SOT23-5L

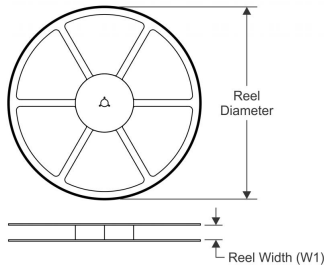
**PACKAGE OUTLINE**



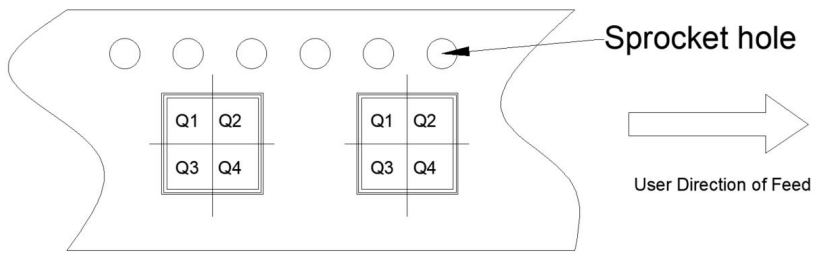
Size Mark	Min (mm)	Max (mm)	Size Mark	Min (mm)	Max (mm)
A	2.82	3.02	C	1.05	1.15
e	0.95 (BSC)		C1	0.03	0.15
b	0.28	0.45	C2	0.12	0.23
B	1.50	1.70	L	0.35	0.55
B1	2.60	3.00	theta	0°	8°

**TAPE AND REEL INFORMATION**

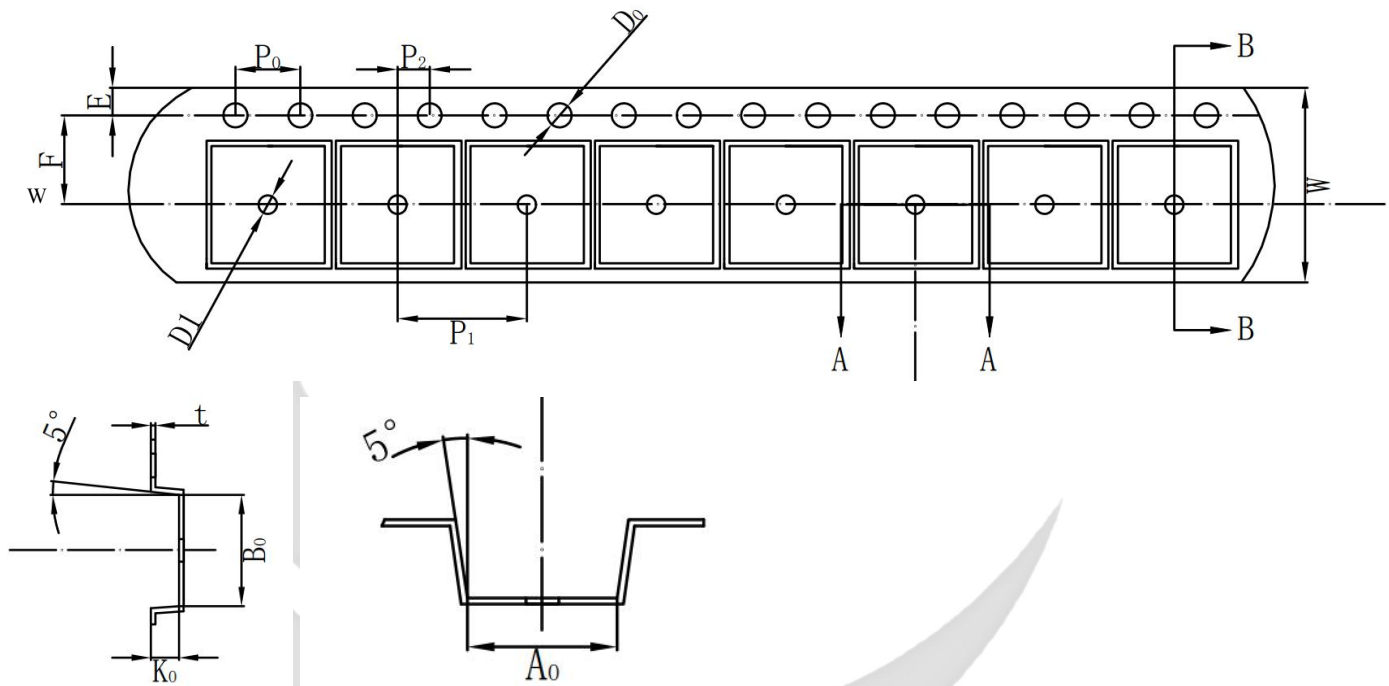
**REEL DIMENSIONS**



**QUADRANT ASSIGNMENTS PIN 1 ORIENTATION TAPE**



**TAPE DIMENSIONS**



Device	Package	Pins	SPQ	Reel Diameter(mm)	Reel Width W1	A0	B0	K0	P1	W	Pin1
GLF1201-T1G7	SOT23-5	5	3000	178	9	3.25	3.30	1.38	4	8	Q3

Remark:

A0: Dimension designed to accommodate the component width

B0: Dimension designed to accommodate the component length

C0: Dimension designed to accommodate the component thickness

W: Overall width of the carrier tape

P1: Pitch between successive cavity centers

单击下面可查看定价，库存，交付和生命周期等信息

[>>GLF\(杰夫微\)](#)