

DESCRIPTION

The GLF71311 is an ultra-efficiency, 2A rated, Load Switch with integrated slew rate control. The best in class efficiency makes it an ideal chose for use in IoT, mobile, and wearable electronics.

The GLF71311 features ultra-efficient IqSmart™ technology that supports the lowest quiescent current (Iq) and shutdown current (ISD) in the industry. Low Iq and ISD solutions help designers to reduce parasitic leakage current, improve system efficiency, and increase battery lifetime.

The GLF71311 integrated slew rate control can also enhance system reliability by mitigating bus voltage swings during switching events. Where uncontrolled switches can generate high inrush currents that result in voltage droop and/or bus reset events, the GLF slew rate control specifically limits inrush currents during turn-on to minimize voltage droop.

GLF71311 Load Switch devices support an industry leading wide input voltage range and helps to improve operating life and system robustness. Furthermore, one device can be used in multiple voltage rail applications which helps to simplify inventory management and reduce operating cost.

GLF71311 Load Switch device is small utilizing a chip scale package with 4 bumps in a 0.97mm x 0.97mm x0.55mm die size and a 0.5mm bump pitch.

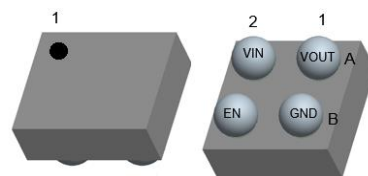
FEATURES

- Ultra-Low Iq: 7nA Typ @ 5.5VIN
- Ultra-Low ISD: 28nA Typ @ 5.5VIN
- Low Ron : 31mΩ Typ @ 5.5VIN
- IOUT Max: 2A
- Wide Input Range: 1.1V to 5.5V
6V abs max
- Controlled Rise Time: 335us at 3.3VIN
- Internal EN Pull-Down Resistor
- Integrated Output Discharge Switch
- Ultra-Small: 0.97mm x 0.97mm

APPLICATIONS

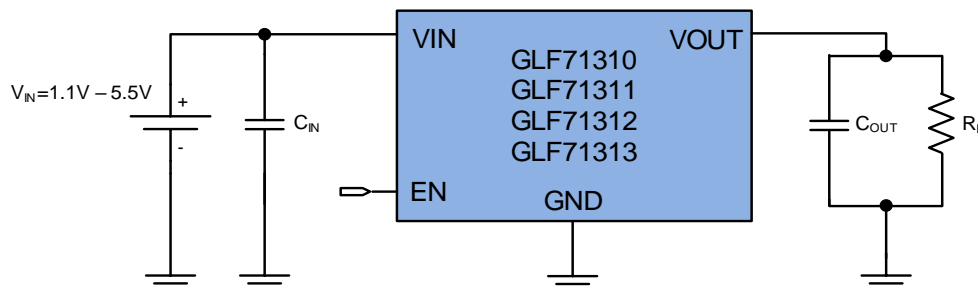
- Wearables
- Data Storage, SSD
- Mobile Devices
- Low Power Subsystems

PACKAGE



0.97mm x 0.97mm x 0.55mm WLCSP

APPLICATION DIAGRAM

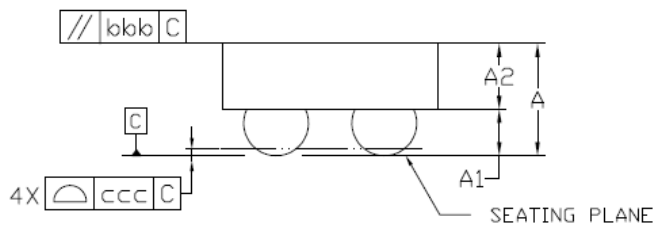
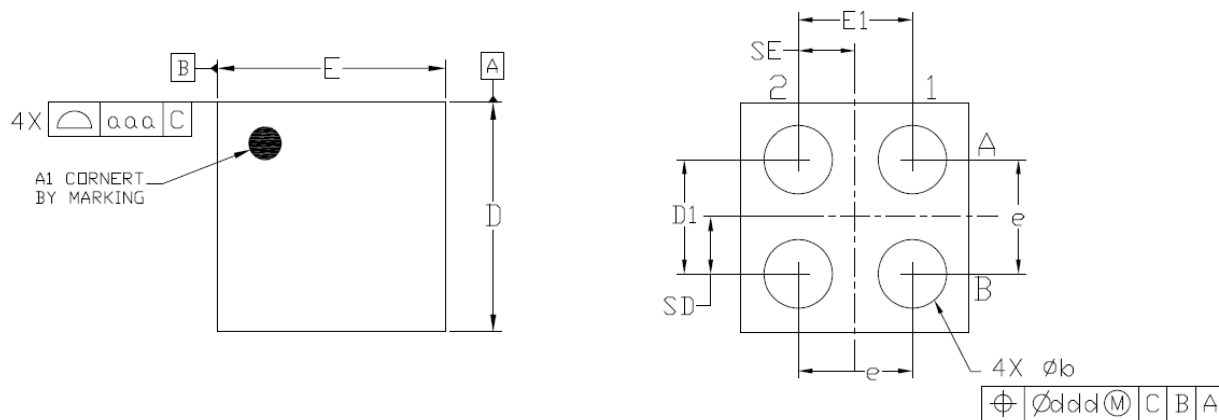


ALTERNATE DEVICE OPTIONS

Part Number	Top Mark	R _{ON} (Typ) at 5.5V	Output Discharge	EN Activity	Availability
GLF71310	BA	31 mΩ	No	High	On Request
GLF71311	BC	31 mΩ	85Ω	High	Released
GLF71312	BD	31 mΩ	No	Low	On Request
GLF71313	BE	31 mΩ	85Ω	Low	On Request

Contact GLF for more information on alternate device delivery and availability.

PACKAGE OUTLINE



Dimensional Ref.			
REF.	Min.	Nom.	Max.
A	0.500	0.550	0.600
A1	0.225	0.250	0.275
A2	0.275	0.300	0.325
D	0.955	0.970	0.985
E	0.955	0.970	0.985
D1	0.450	0.500	0.550
E1	0.450	0.500	0.550
b	0.260	0.310	0.360
e	0.500 BSC		
SD	0.250 BSC		
SE	0.250 BSC		
Tol. of Form & Position			
aaa	0.10		
bbb	0.10		
ccc	0.05		
ddd	0.05		

Notes

1. ALL DIMENSIONS ARE IN MILLIMETERS (ANGLES IN DEGREES).
2. DIMENSIONING AND TOLERANCING PER ANSI Y14.5M-1994.

PLEASE SEND EMAIL TO INFO@GLFIPOWER.COM FOR OBTAINING FULL DATASHEET.

单击下面可查看定价，库存，交付和生命周期等信息

[>>GLF](#)