

DESCRIPTION

The GLF71301 is an ultra-efficiency, 1.5A rated, Load Switch with integrated slew rate control. The best in class efficiency makes it an ideal choice for use in IoT, mobile, and wearable electronics.

The GLF71301 features an ultra-efficient I_QSmart™ technology that supports the lowest quiescent current (I_Q) and shutdown current (I_{SD}) in the industry. Low I_Q and I_{SD} solutions help designers to reduce parasitic leakage current, improve system efficiency, and increase battery lifetime.

The GLF71301 integrated slew rate control can also enhance system reliability by mitigating bus voltage swings during switching events. Where uncontrolled switches can generate high inrush currents that result in voltage droop and/or bus reset events, the GLF slew rate control specifically limits inrush current during turn-on to minimize voltage droop.

GLF71301 Load Switch device supports an industry leading wide input voltage range and helps to improve operating life and system robustness. Furthermore, one device can be used in multiple voltage rail applications which helps to simplify inventory management and reduces operating cost.

GLF71301 Load Switch device is small utilizing a wafer level chip scale package with 4 bumps in a 0.77mm x 0.77mm x 0.5mm die size and a 0.4mm bump pitch.

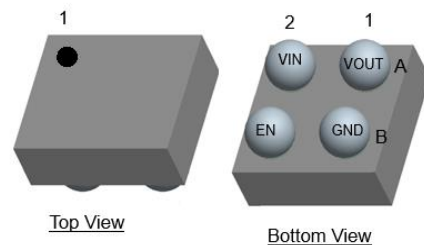
FEATURES

- Ultra-Low I_Q: 1nA Typ @ 5.5V_{IN}
- Ultra-Low I_{SD}: 19nA Typ @ 5.5V_{IN}
- Low R_{ON} = 34mΩ Typ. @ 5.5V_{IN}
- I_{OUT} Max = 1.5A
- Wide Input Range: 1.1V to 5.5V
6V abs max
- Controlled Rise Time: 430us at 3.3V_{IN}
- Internal EN Pull-Down Resistor
- Integrated Output Discharge Switch
- Ultra-Small: 0.77mm x 0.77mm

APPLICATIONS

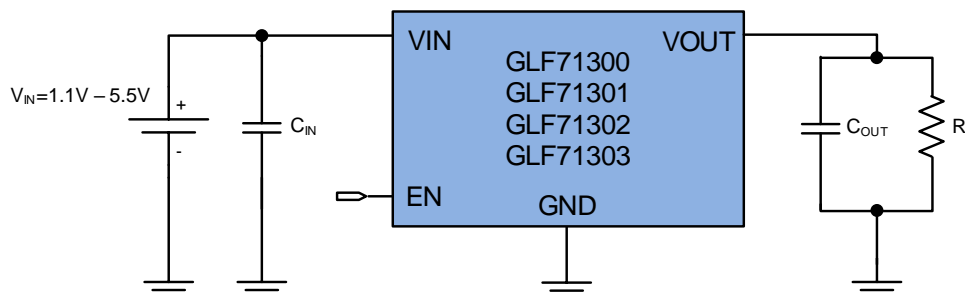
- Wearables
- Data Storage, SSD
- Mobile Devices
- Low Power Subsystems

PACKAGE



0.77mm x 0.77mm x 0.5mm, 0.4mm pitch
WLCSP

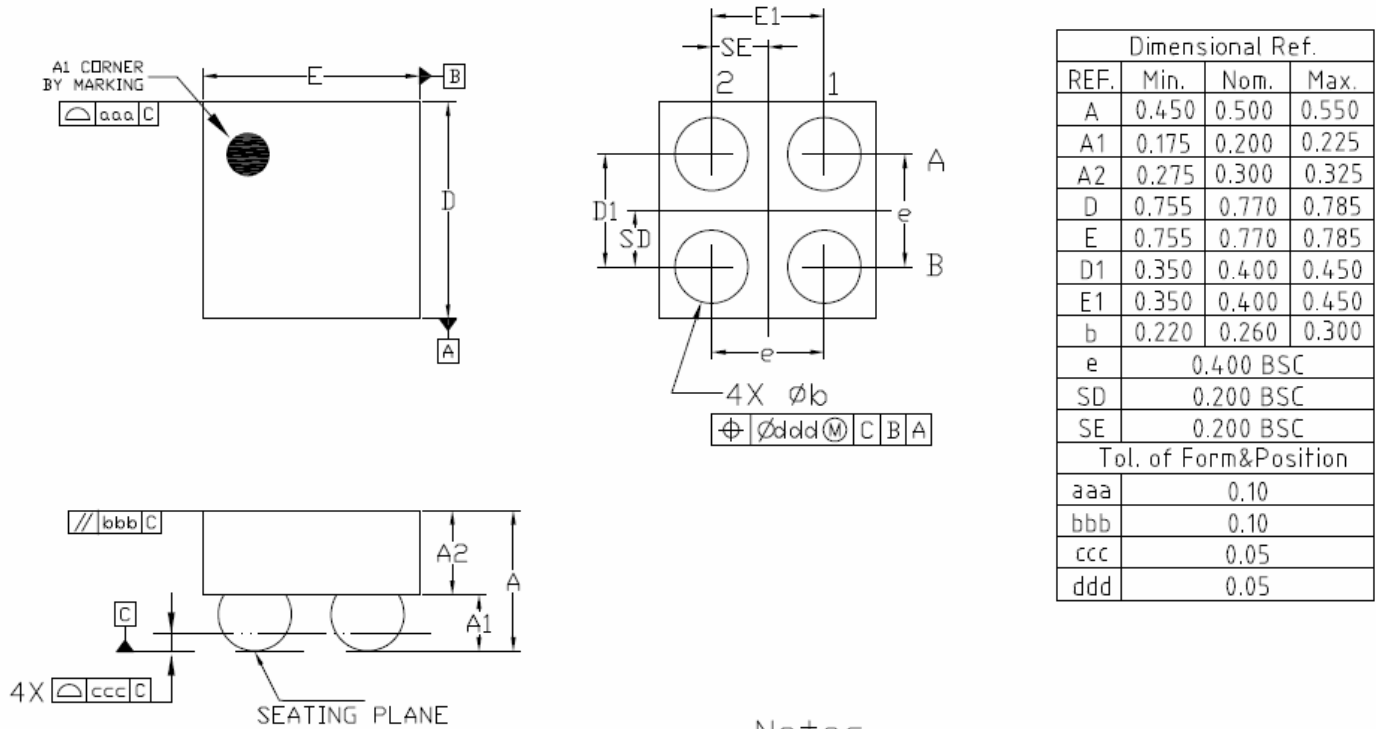
APPLICATION DIAGRAM



ALTERNATE DEVICE OPTIONS

Part Number	Top Mark	R _{ON} (Typ) at 5.5V	Output Discharge	EN Activity	Availability
GLF71300	A	34mΩ	NA	High	On Request
GLF71301	B	34mΩ	85Ω	High	Released
GLF71302	C	34mΩ	NA	Low	On Request
GLF71303	D	34mΩ	85Ω	Low	On Request

PACKAGE OUTLINE



Notes

1. ALL DIMENSIONS ARE IN MILLIMETERS (ANGLES IN DEGREES).
2. DIMENSIONING AND TOLERANCING PER ANSI Y14.5M-1994.

PLEASE SEND EMAIL TO INFO@GLFIPOWER.COM FOR OBTAINING FULL DATASHEET.

单击下面可查看定价，库存，交付和生命周期等信息

[>>GLF](#)