



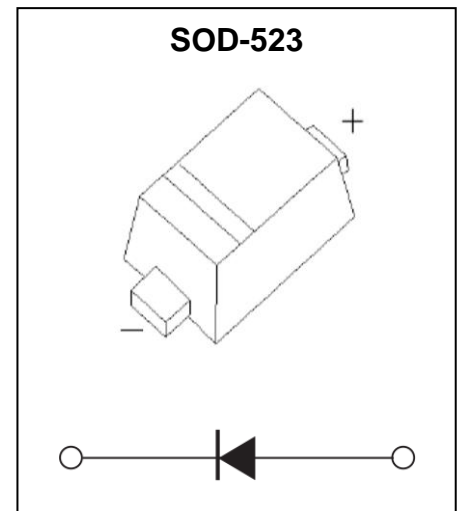
1SS400 Switching Diode(High speeding switching)

Feature

- Small Speed switching
- High Speed switching
- High Reliability

Application

- High Speed switching



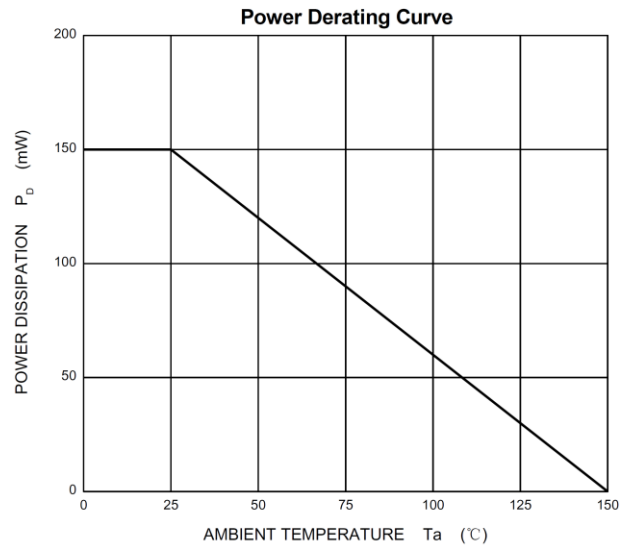
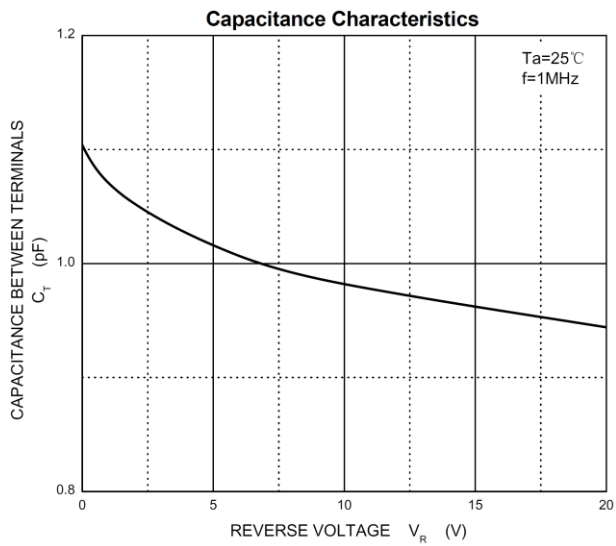
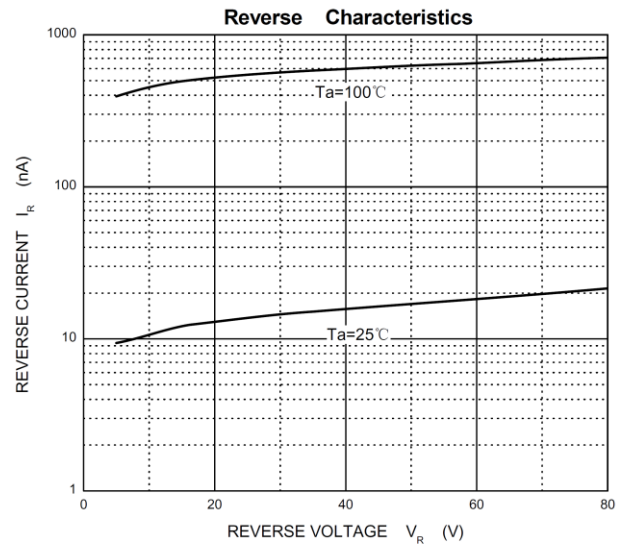
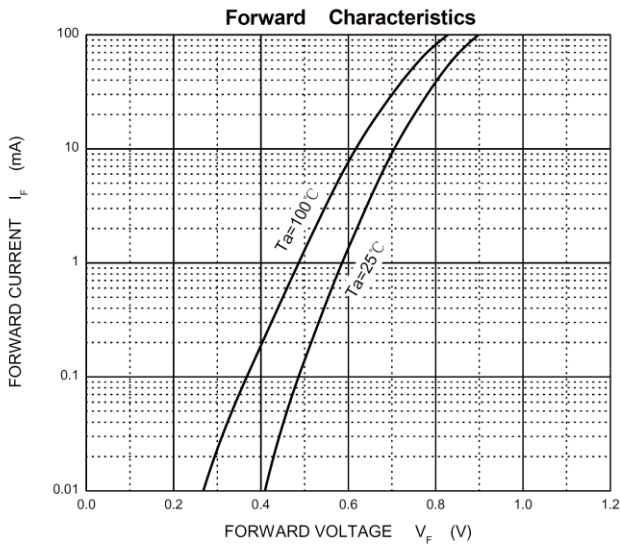
ABSOLUTE MAXIMUM RATINGS ($T_a=25^{\circ}\text{C}$ unless otherwise noted)

Parameter	Symbol	Value	Unit
Non-repetitive peak reverse voltage	V_{RM}	90	V
DC blocking voltage	V_R	80	V
Mean rectifying current	I_O	0.1	A
Non-repetitive Peak Forward Surge Current @ $t=8.3\text{ms}$	I_{FSM}	225	mA
Power Dissipation	P_D	0.2	W
Thermal Resistance from Junction to Ambient	$R_{\theta JA}$	833	$^{\circ}\text{C/W}$
Junction Temperature	T_J	150	$^{\circ}\text{C}$
Storage Temperature Range	T_{STG}	-55 ~ +150	$^{\circ}\text{C}$

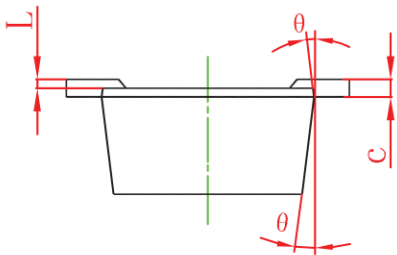
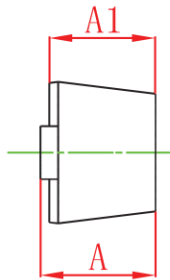
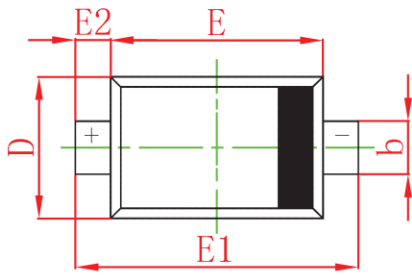
ELECTRICAL CHARACTERISTICS ($T_a=25^{\circ}\text{C}$ unless otherwise noted)

Parameter	Symbol	Test Condition	Min	Type	Max	Unit
Forward voltage	V_F	$I_F=100\text{mA}$			1.2	V
Reverse current	I_R	$V_R=80\text{V}$			0.1	μA
Capacitance between terminals	C_T	$V_R=0.5\text{V}, f=1\text{MHz}$			3	pF
Reverse recovery time	t_{rr}	$I_F=10\text{mA}, V_R=6\text{V}, R_L=100\Omega$			4	ns

Typical Characteristics



SOD-523 Package Outline Dimensions



Symbol	Dimensions In Millimeters		Dimensions In Inches	
	Min	Max	Min	Max
A	0.510	0.770	0.020	0.031
A1	0.500	0.700	0.020	0.028
b	0.250	0.350	0.010	0.014
c	0.080	0.150	0.003	0.006
D	0.750	0.850	0.030	0.033
E	1.100	1.300	0.043	0.051
E1	1.500	1.700	0.059	0.067
E2	0.200 REF		0.008 REF	
L	0.010	0.070	0.001	0.003
θ	7° REF		7° REF	

单击下面可查看定价，库存，交付和生命周期等信息

[>>GP\(格瑞宝\)](#)