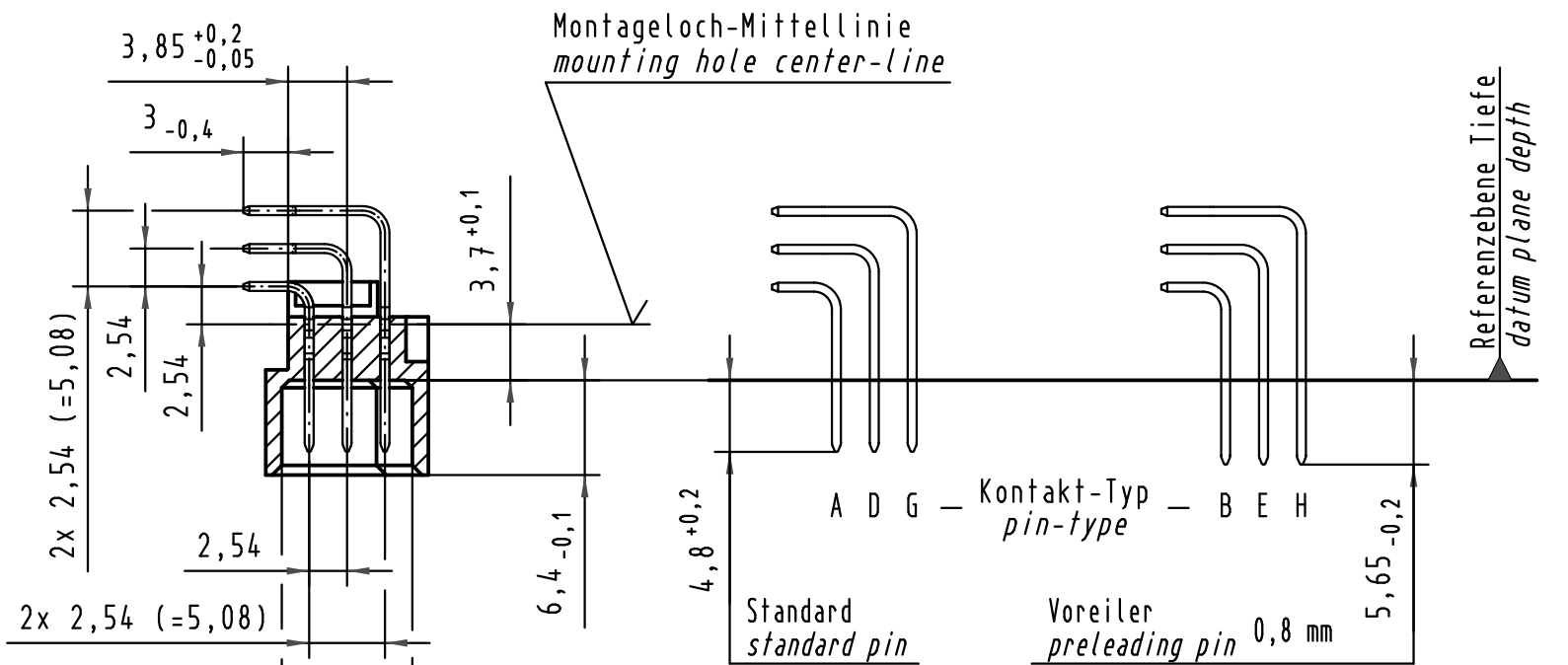
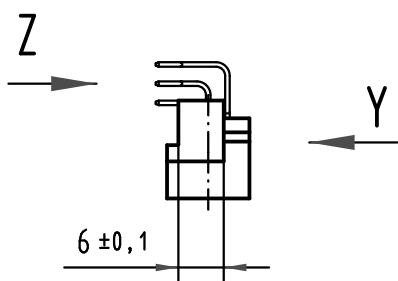
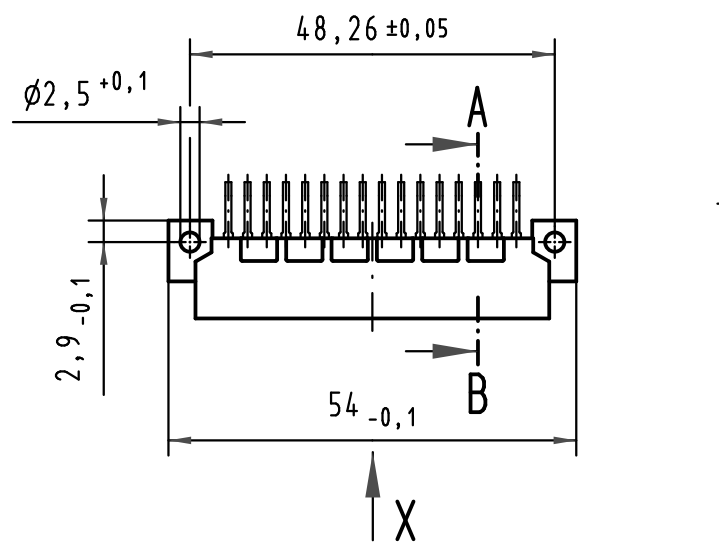
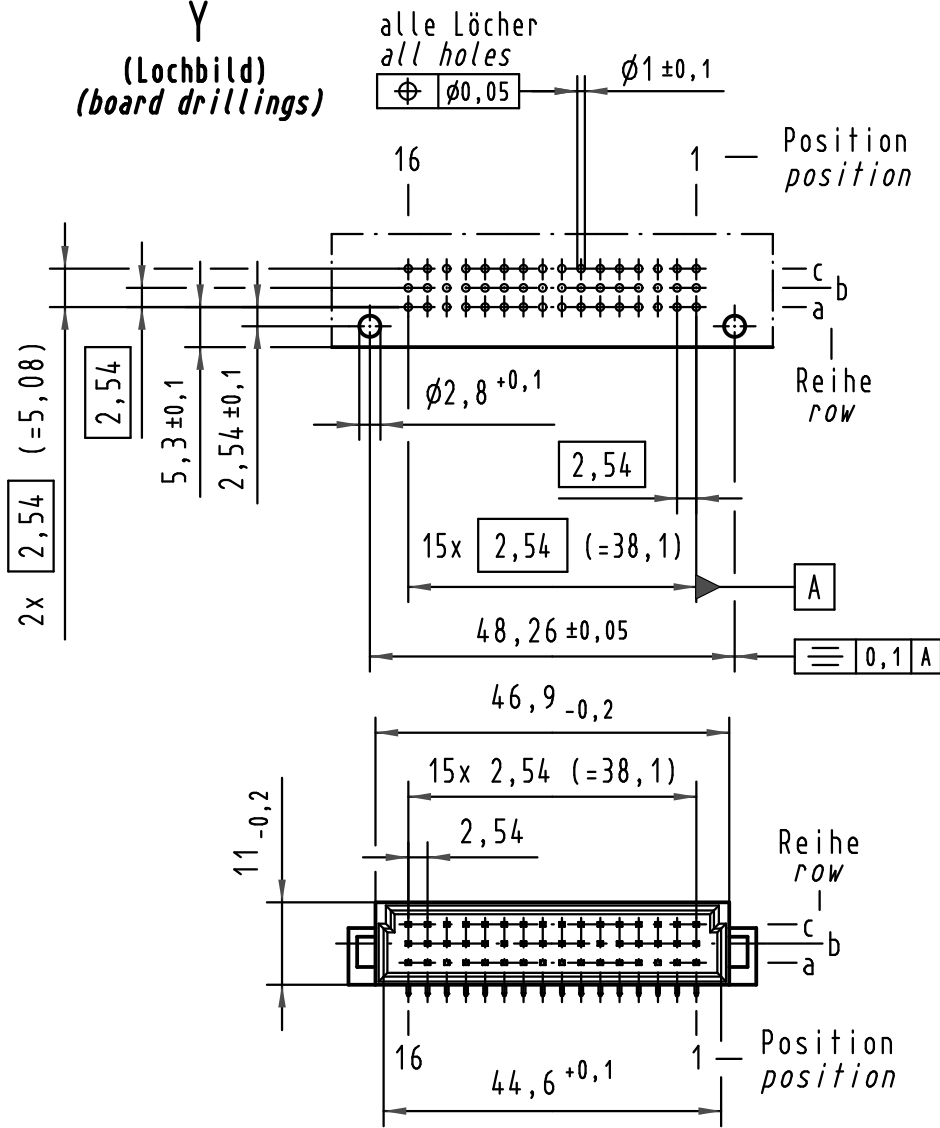


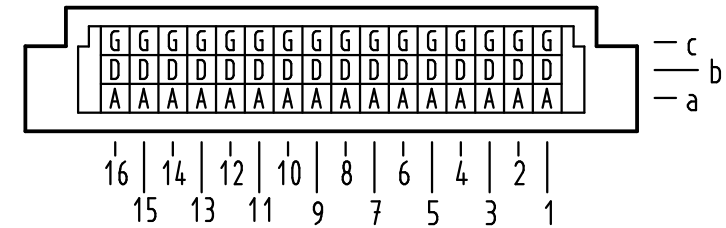
Alle Rechte vorbehalten/ All rights reserved

Y
(Lochbild)
(board drillings)



A-B
2:1

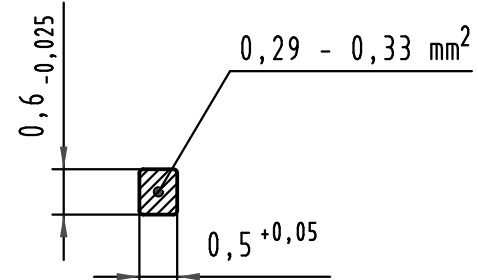
X Kontaktbelegung
contact loading



09 23 148 7921	3	Au flash over PdNi over Ni
09 23 148 6921	2	Au flash over PdNi over Ni
09 23 148 2921	1	Au flash over PdNi over Ni
Bestell-Nr. part-no.	Anforderungsstufe nach IEC performance level acc. to IEC	Kontaktoberfläche contact plating

Z
10:1

Querschnitt der
Lötanschlüsse:
cross-section of
solder terminations:



 All Dimensions in mm Original Size DIN A 3	Techn. Character.			Nicht tolerierte Maße/Free size tolerances IEC 60603-2	
		Dat.	Name	Maßstab/Scale	Bauform 2C Messerleiste Einlöt, 48 pol. type 2C male connector solder, 48 pol.
	Detail.	14.07.00	Rie.		
	Insp.	14.07.00	Pa.	2:1	
	Stand.			10:1	
35345	24.10.08	Hage.			
34650	12.12.07	Hage.			
28047					
Mod.	Dat.	Name	HARTING Electronics GmbH & Co. KG D-32339 ESPELKAMP		TB 09 23 148 x921 Sub.

Blatt/ page

单击下面可查看定价，库存，交付和生命周期等信息

[>>HARTING](#)