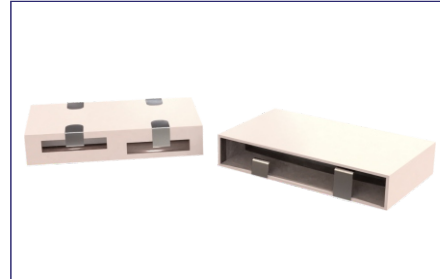


### SMD 6.5x6.0 to 8.5x7.5 PACKAGE

#### PRODUCT FEATURES

- High selectivity, suitable for narrowband communication
- Compact structure and small size
- Electrical performance won't be affected by external electromagnetic interference
- Suitable for matching with different ICs
- Automatic on-line, can be reflowed
- RoHS compliant

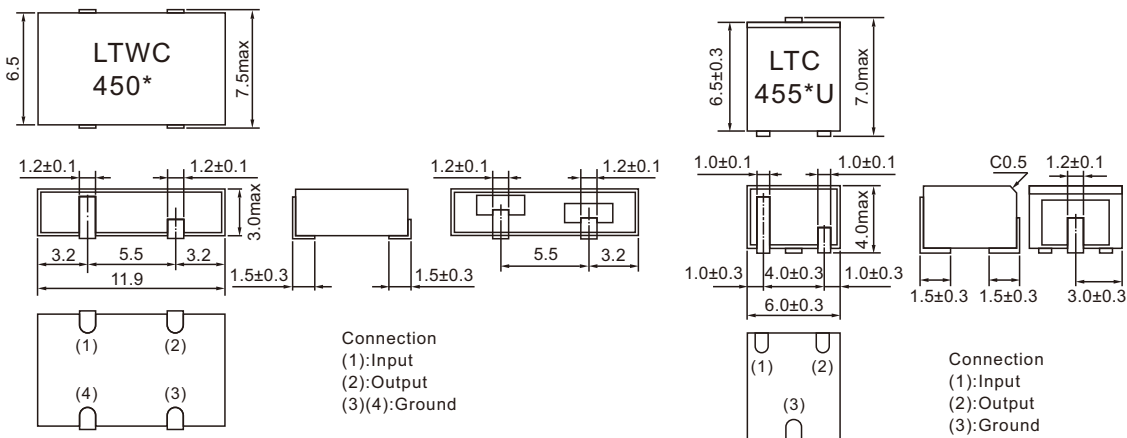
#### PRODUCT PHOTO



#### PRODUCT SPECIFICATIONS

Part Number		6dB Bandwidth (KHz)Min.	Attn.BW Bandwidth (KHz)Min.	Stop Band Attn (dB) Min.		Ripple (dB)Max.	Insertion Loss(dB)Max.	Input/Output Impedance (K.Ohm)	Operating Temperature (°C)
				LTWC	LTC				
LTWC450D	LTC450DU	±10	±20	45	28	3	6	1.5	-20~+80
LTWC450E	LTC450EU	±7.5	±15	45	28	3	6	1.5	
LTWC450F	LTC450FU	±6	±12.5	45	28	3	6	2	
LTWC450G	LTC450GU	±4.5	±10	45	28	3	6	2	
LTWC450H	LTC450HU	±3	±9	50	30	3	6	2	
LTWC455D	LTC455DU	±10	±20	45	28	3	6	1.5	
LTWC455E	LTC455EU	±7.5	±15	45	28	3	6	1.5	
LTWC455F	LTC455FU	±6	±12.5	45	28	3	6	2	
LTWC455G	LTC455GU	±4.5	±10	45	28	3	6	2	
LTWC455H	LTC455HU	±3	±9	50	30	3	6	2	

#### PACKAGE OUTLINE / DIMENSIONS



LTWC Series

LTC \*\*\*\*U Series

单击下面可查看定价，库存，交付和生命周期等信息

[>>HCI\(杭晶\)](#)