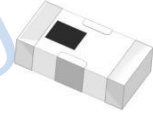


Low Pass Filter

HT-LFCN-5000+



50Ω DC to 5000 MHz

Features

- excellent power handling
- small size
- 7 sections
- temperature stable
- LTCC construction, and has good moisture resistance, corrosion resistance, high reliability.

Applications

- harmonic rejection
- VHF/UHF transmitters/receivers
- Base Station of Mobile Communication, lab use.

Electrical Specifications at 25°C

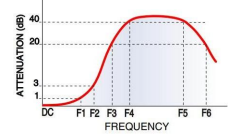
Parameter		F#	Frequency(MHz)	Min.	Typ.	Max.	Unit
Pass Band	Insertion Loss	DC-F1	DC-5000	-	1.3	2.0	dB
	Freq.Cut-Off	F2	5610	-	3.0	-	dB
	VSWR	DC-F1	DC-5000	-	1.6	-	:1
Stop Band	Rejection Loss	F3	6850	25	-	-	dB
		F4-F5	7050	-	30	-	dB
	VSWR	F6	18000	-	20	-	dB
		F3-F6	18000	-	20	-	:1

Maximum Ratings

Operating Temperature	-55°C to 100°C
Storage Temperature	-55°C to 100°C
RF Power Input*	9W max. at 25°C

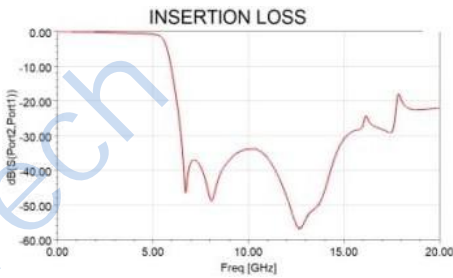
* Passband rating, derate linearly to 3W at 100°C ambient.
Permanent damage may occur if any of these limits are exceeded.

Typical Frequency Response

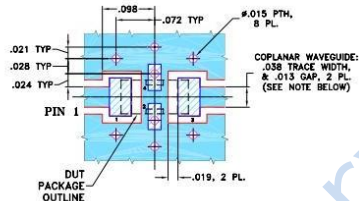


Pin Connections

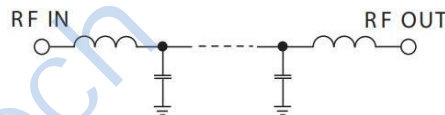
RF IN	1
RF OUT	3
GROUND	2,4



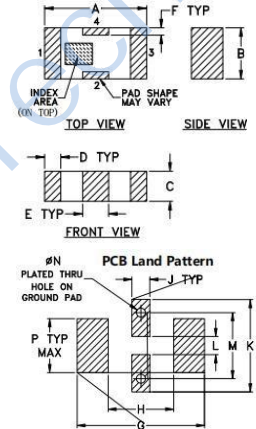
Suggested PCB Layout



Electrical Schematic



Outline Drawing



Outline Dimensions: Unit (mm)

A	3.20	B	1.60	C	0.95
D	0.51	E	0.81	F	0.23
G	4.29	H	2.21	J	0.61
K	3.10	L	0.61	M	2.21
N	0.30	P	1.80	wt	0.02g

单击下面可查看定价，库存，交付和生命周期等信息

[>>HenryTech\(恒利泰\)](#)