

H3-TCM2-63WX+

30-6000MHz 50Ω 1:2 Balun

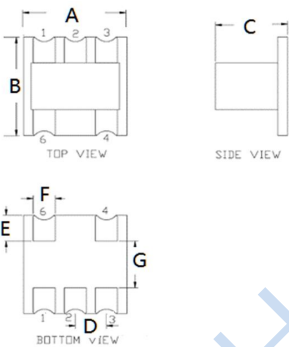
APPLICATIONS

- PCS
- Wideband push-pull amplifiers
- Cellular

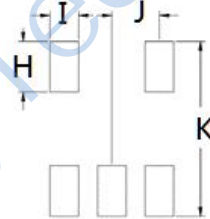
FEATURES

- Surface mount
- Impedance ratio: 1:2
- RoHS compliant and Pb free
- Available on tape and reel

DIMENSIONS



Land Pattern



| | | | | | | |
|------|------|------|------|------|------|------|
| A | B | C | D | H | I | J |
| 4.21 | 4.21 | 2.40 | 1.27 | 1.40 | 0.76 | 1.27 |
| E | F | G | | K | | |
| 1.11 | 0.90 | 2.00 | | 4.83 | | |

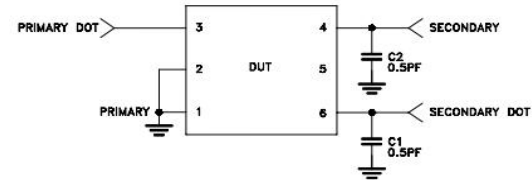
Unless otherwise stated dimensions are in mm

Tolerance: .xx ± 0.25, .xxx ± 0.05

ELECTRICAL SPECIFICATIONS@25°C:

| Parameters (P#: ENA PORT) | frequency band | Min. | Typ. | Max. | Unit |
|-------------------------------------|----------------|------|------|------|------|
| Impedance Ratio (secondary/primary) | | | 2 | | |
| Port Impedance, Z0 | | | 50 | | Ohm |
| Insertion Loss | 30-5000MHz | | 2.1 | 2.9 | dB |
| | 100-4000MHz | | 1.4 | 1.9 | dB |
| | 5000-6000MHz | | 3.2 | 3.9 | dB |
| Amplitude Balance | 30-6000MHz | | 0.6 | | dB |
| | 100-4500MHz | | 0.5 | | dB |
| Phase Balance | 10-6000MHz | | 6 | | Deg |
| | 100-4500MHz | | 5 | | Deg |
| Common Mode Rejection | 30-6000MHz | 15 | 22 | | dB |
| | 100-4500MHz | 18 | 28 | | dB |

FUNCTIONAL SCHEMATIC



PIN CONFIGURATION

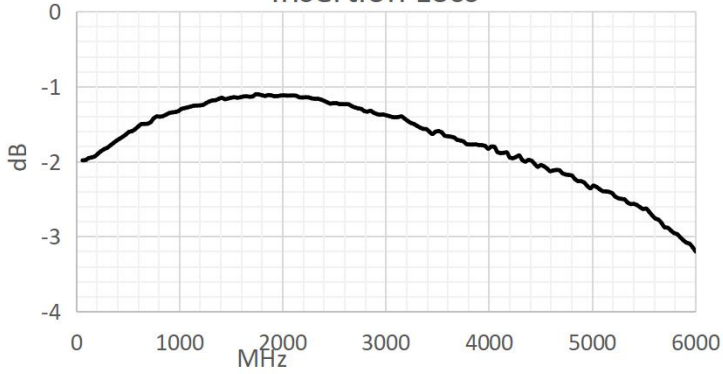
| Pin No. | Function |
|---------|---------------|
| 1 | Primary |
| 2 | Primary |
| 3 | Primary Dot |
| 4 | Secondary |
| 6 | Secondary Dot |

ABSOLUTE MAXIMUM RATINGS

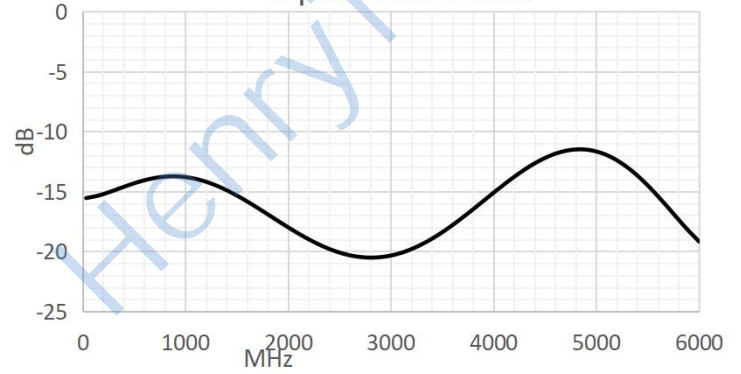
| Parameter | Value |
|-----------------------------|--------------|
| Input Power | 400mW Max |
| DC Current | 30mA Max |
| Operating Temperature Range | -40 to 85°C |
| Storage Temperature Range | -55 to 100°C |

TEST CURVE

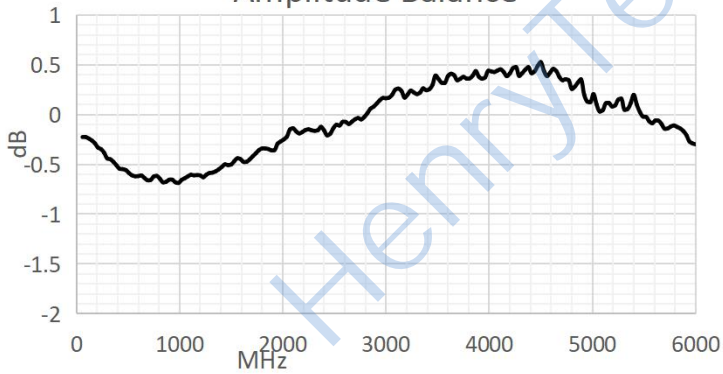
Insertion Loss



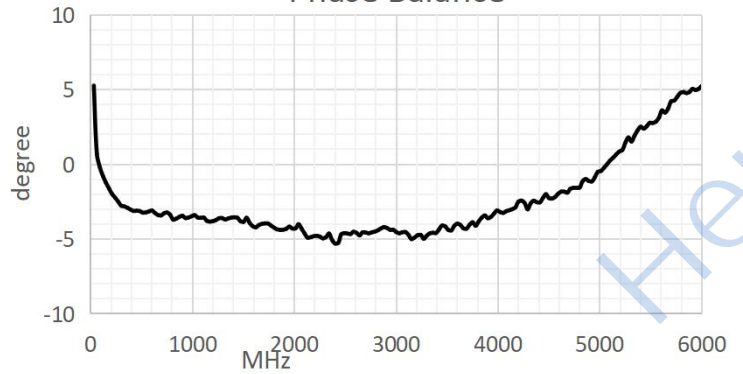
Input Return Loss



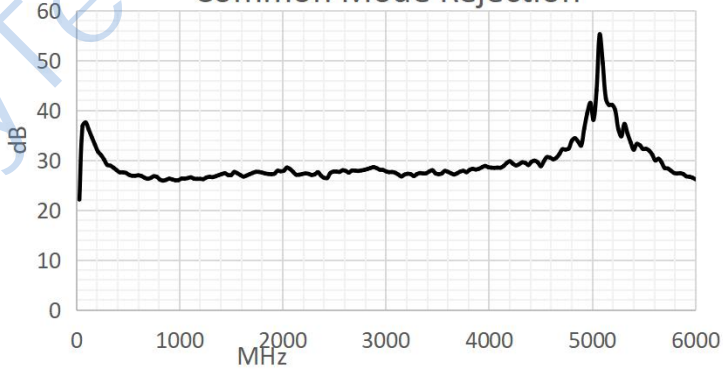
Amplitude Balance



Phase Balance



Common Mode Rejection



单击下面可查看定价，库存，交付和生命周期等信息

[>>HenryTech\(恒利泰\)](#)