

H3-TC2-1T+

3-300MHz 50Ω 1:2 Balun

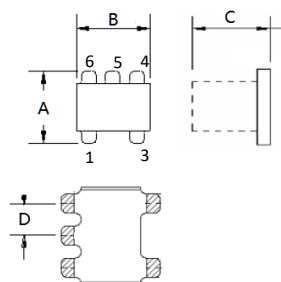
APPLICATIONS

• Ideally suitable for CATV broadband applications.

FEATURES

- Surface mount
- Impedance ratio: 1:2
- Centre tap on secondary
- RoHS compliant and Pb free
- Available on tape and reel

DIMENSIONS

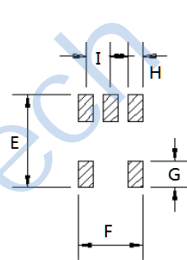


A	B	C
3.81	3.81	2.90
D		
1.27		

Unless otherwise stated dimensions are in mm

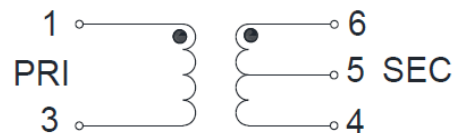
Tolerance: .xx ± 0.25, .xxx ± 0.05

Land Pattern



E	F	G
4.83	3.30	1.40
H	J	
0.76	1.27	

FUNCTIONAL SCHEMATIC



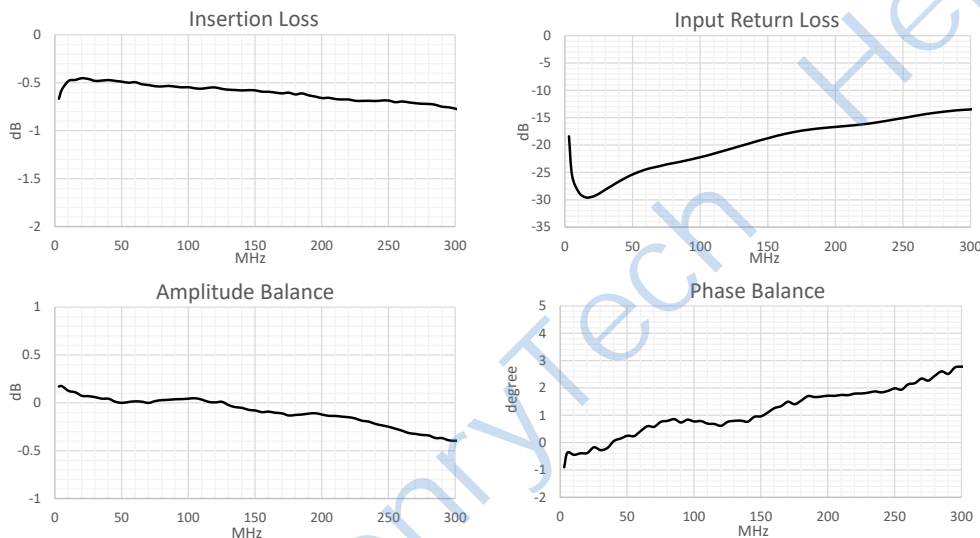
PIN CONFIGURATION

Pin No.	Function
1	Primary Dot
3	Primary
4	Secondary
5	Secondary Centre Tap
6	Secondary Dot

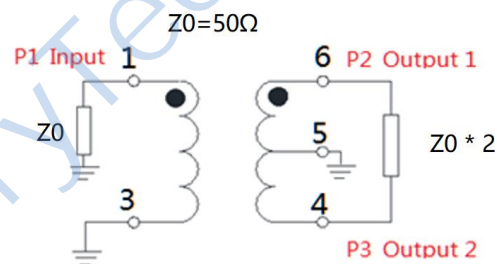
ELECTRICAL SPECIFICATIONS@25°C:

Parameters (P#: ENA PORT)	frequency band	Min.	Typ.	Max.	Unit
Port Impedance, Z0 (P1 / P2 / P3)			50/50/ 50		Ohm
Insertion Loss	3-300MHz		1.0	1.5	dB
Return Loss	3-300MHz	10.0	15.0		dB
Amplitude Balance	3-300MHz		0.4	±0.8	dB
Phase Unbalance	3-300MHz		3	±7	°

TEST CURVE



APPLICATION & TEST CIRCUIT



ABSOLUTE MAXIMUM RATINGS

Parameter	Value
RF Power	250mW
DC Current	240mA
Operating Temperature Range	-40 to 85°C

Tel: +86-28-85589664

E-mail: mr_li@henglitaitech.com

Web: www.hltchips.com

Adress: No.198 Tianqin East Street, Gaoxin W Downloaded From Oneyac.com

单击下面可查看定价，库存，交付和生命周期等信息

[>>HenryTech\(恒利泰\)](#)